

## Minutes of Graduate College Council Meeting

March 8, 2020

Unapproved as of April 7. To be presented for approval at April meeting.

In attendance (assessed from Zoom screens): Rossi, Parcels, Riordan, Martin, McAfee, Perry, Braun, Wang, Miller, Teplyakov, Griffin, Hutchison, Corbett, Irvine, Zurakowski, McConnell, Caplan, White, Racicot, Healey, Pic, Tepsuporn, Thomas, Botello, Okoye, Silbernagel, Bell, Bank, Safiya, Shatkay, Bais, Daniels, Rechsteiner, Chan, Purciello, Wei, Davis, Johnson, Buckley, Kane, Lenhoff, Heyn, Ford, Kwansa, Zide,

Call to order at 330

Minutes and agenda approved

Dean's report (Lou Rossi, see his slides. Q&A held until end)

- Ombudsperson update. Issue is now on president's desk. Confirms this was recommended by Faculty Senate 2 years ago.
- Work on strategic plan. Running behind calendar due to press of time for Dean. Hoping to complete for April.
- Graduate enrollment dashboard rolled out 2 weeks ago. Many chairs request access, Tableau licenses exhausted for now. Working on the access issue. This is a good problem. Feedback is coming in. Thanks to Bill Barnet for development work
- Application trends. Still running hot. 62% ahead of last year on acceptances based on about 10% more offers. Data being circulated to program directors week by week. Gains are across the board. Ahead across colleges and program levels, including international students. Details in slides.
- Graduate tuition rates: Grad college working to "consolidate" grad tuition rates. \$13.5 million tuition collected last year. Base rate is \$1898 per credit. Comparator schools are in \$800-1000 base rate range. We have then discounted aggressively, it is opaque, principles not clear, and we end up looking expensive. Re-work is underway. Conditions: Must be cost neutral, focus on paying students, simplify rates, and use detailed market studies or actual student demand as anchors for pricing structure. New proposal is single base rate \$950 per credit, with some exceptions as listed on slides. A few programs stay at \$1898, but most come down on base rates. Histogram of actual paid rates in slide, and rates with new base. Simpler and easy to explain on one sheet. Do programs have to act on this? Communication coming out. Many sites updates in grad college, and some changes needed on Departments' sites.
- Peer mentoring: Upcoming Friday directors meeting with discuss this issue. Mentor Collective: possible contract to be discussed.
- Appeal to participate in Awards Committee. Important opportunity for shared governance. Process has worked well this year, but more faculty governance desired. Please consider serving or nominating.

- Q&A: Hit rate on competitive counteroffer program? 5 offers made. 1 accepted so far. // Will Int'l students be allowed to enter US? Dean has no new info. May depend on local Consuls. // Why TESOL not considered education program for pricing? Done by program, not by student group. // Is new tuition structure approved by BoT? Yes // Are new rates int'l and domestic? Yes. In effect for fall? // Suggestion that grad school generate a letter for grad students to confirm employment status to help with vaccine eligibility.

#### Update on Committees & Proposals (Mark Parcels)

- Some appointments to DEI made, some still pending
- Other committees to be appointed by chair as ad hoc committees with a one-year kill-switch sunset based on results. Get support and participation from enthusiastic folks. See his slides for details of appointment setup

#### Graduate students

- No report
- Ombudsman topic was covered by Dean

#### Interdisciplinary Curriculum Committee report (see slides)

- Several programs have moved into Curriculog process
- Committee is still expecting info on Community Engagement and Sustainability programs
- Expect to propose Bylaws changes in May (to fill gaps and modify pathways). See slides for detail.

#### Graduate Student Life Committee

- Proposes time off policy. Has been distributed. Also parental leave policy. Approved unanimously by Committee. To be voted on in April, presented as resolution now to be discussed and added to April agenda. From Grad College Council would go into Senate committee process. Text shared with meeting on screen for discussion.
- Aimed at students with assistantships. Specifics of appointments that this applies to, in text. Process starts with notifying supervisor. Depending on appointments and status, the time off varies according to language in the policy. See policy for details.
- Discussion of policy re parental responsibilities. There is a provision for unpaid longer leave (6 weeks). Could it become a paid leave, even if shorter? Discussion. Committee may address the issue going forward.

#### Awards and Fellowships Committee

- Doctoral and dissertation fellowships have been offered. Acceptances are coming in until March 15.

- UNIDEL and Grad Scholar awards work with two deadlines. One set of offers out. Second round deadline March 19.
- Summary data presented on nominees, offers, for various awards in slides.
- Appeal for committee members. Some comments that new staggered timelines have helped. Idea that one-two week later on the early deadline would be better.

#### College Liaison reports

- None this month.
- EOE in April
- EHD in May
- Q: Should we continue report cycle? Or focus instead on only new programs, etc.? Discussion followed, leans toward continuing.

#### New Business

- Expect proposals from Interdisciplinary Curriculum Committee for next agenda.

#### Adjournment

# Graduate College Council

Dean's Remarks  
8 Mar 2021

# Reminder: Graduate College organization

Our new structure is reflected on our website.

**PRIMARY CONTACT INFORMATION**  
General Graduate College Inquiries/Student Support

**Hours:**

- 8 a.m.–5 p.m., Monday–Friday
- Closed: Saturday–Sunday

**Phone:** 302-831-6824  
**Fax:** 302-831-874

[EMAIL US >](#)

**Graduate College Admissions**

**Hours:**

- 8 a.m.–5 p.m., Monday–Friday
- Closed: Saturday–Sunday

**Phone:** 302-831-2129  
**Fax:** 302-831-8745

[EMAIL US >](#)

**DEPARTMENTAL CONTACT INFORMATION**

<b>Academics</b> Mary Martin <a href="mailto:marvm@udel.edu">marvm@udel.edu</a>	<b>Budget / Business Ops</b> Cindy Rechsteiner <a href="mailto:cindyrc@udel.edu">cindyrc@udel.edu</a>
<b>Data Analysis</b> Bill Barnett <a href="mailto:bbarnett@udel.edu">bbarnett@udel.edu</a>	<b>Graduate Student Life</b> Caitlin Hutchison <a href="mailto:cbutch@udel.edu">cbutch@udel.edu</a>
<b>Marketing/Communications</b> Steven Kendus <a href="mailto:skendus@udel.edu">skendus@udel.edu</a>	<b>Professional Development</b> Suprawee Tepsuporn <a href="mailto:surawee@udel.edu">surawee@udel.edu</a>
<b>Recruitment, Admissions, Retention</b> LaRuth McAfee <a href="mailto:mcafee@udel.edu">mcafee@udel.edu</a>	<b>UD Online and Professional &amp; Continuing Studies</b> George Irvine <a href="mailto:pcs@udel.edu">pcs@udel.edu</a>   <a href="mailto:girvine@udel.edu">girvine@udel.edu</a>

# Closing the loop: Ombudsman

Graduate Representative Jessica Thomas raised the issue of having an Ombudsman at our last GCC meeting.

The Faculty Senate passed a resolution strongly supporting the creation of an Ombudsman in 2018.

The issue was raised last week during the President's Remarks at the Faculty Senate by VP Amy Hagstrom.

President Assanis does not oppose the idea and will consider it.

# Update: Strategic planning



~~October 30~~ November 17: Working groups charged.

~~November 30~~ ~~December 15~~ **January 8**: Working groups deliver recommendations objectives, metrics, action items and reasoning.

~~December~~ January 8 through January 15 22: Graduate College coordinates working group recommendations.

January 15 through February 15 22: Draft of integrated strategic plan released to working groups for revision and polishing.

February 15 22-March 15 22: Draft strategic plan released to Graduate Council for comment.

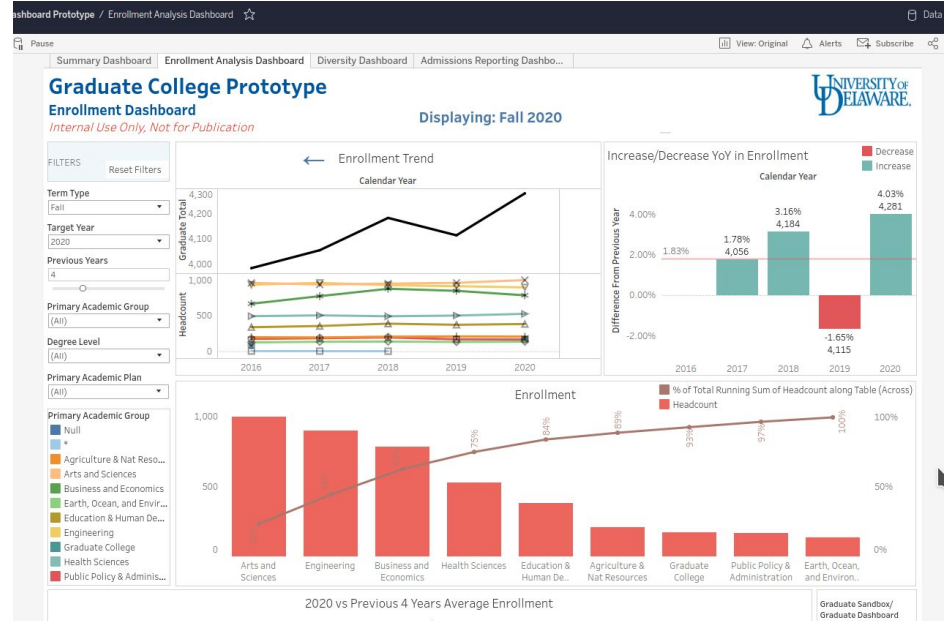
March 30: Release of Graduate College Strategic Plan.

# Update: Graduate Enrollment dashboard

All program directors have it.

The Chairs want it, but we are out of Tableau licenses.

We're collecting feedback on desirable features.





# Update: Application trends (Mar 2)

Applied Academic Group	Applied Academic ...	GRAD Status Group 1 / GRAD Status Group 2				
		Applied	Admitted			Awaiting Decision
			Total	Accepted	Awaiting Response	Total
<b>Grand Total</b>		<b>5,276</b>	<b>1,651</b>	<b>834</b>	<b>695</b>	<b>2,935</b>
		4,385	1,513	515	881	2,290
		+20%	+9%	+62%	-21%	+28%
Agriculture & Nat Resources	AG	<b>176</b>	<b>88</b>	<b>55</b>	<b>30</b>	<b>71</b>
		173	69	25	41	93
		+2%	+28%	+120%	-27%	-24%
Arts and Sciences	AS	<b>1,692</b>	<b>344</b>	<b>125</b>	<b>199</b>	<b>1,164</b>
		1,202	359	73	262	645
		+41%	-4%	+71%	-24%	+80%
Business and Economics	BE	<b>492</b>	<b>201</b>	<b>157</b>	<b>24</b>	<b>228</b>
		543	215	116	78	237
		-9%	-7%	+35%	-69%	-4%
Earth, Ocean, and Environment	MS	<b>186</b>	<b>43</b>	<b>22</b>	<b>18</b>	<b>111</b>
		149	40	12	28	104
		+25%	+8%	+83%	-36%	+7%
Education & Human Development	EH	<b>291</b>	<b>108</b>	<b>57</b>	<b>47</b>	<b>135</b>
		242	83	47	31	111
		+20%	+30%	+21%	+52%	+22%
Engineering	EG	<b>1,397</b>	<b>503</b>	<b>214</b>	<b>266</b>	<b>785</b>
		1,314	492	100	354	648
		+6%	+2%	+114%	-25%	+21%
Health Sciences	HN	<b>748</b>	<b>259</b>	<b>140</b>	<b>76</b>	<b>287</b>
		610	195	111	63	371
		+23%	+33%	+26%	+21%	-23%
Public Policy & Administration	PA	<b>294</b>	<b>105</b>	<b>64</b>	<b>35</b>	<b>154</b>
		152	60	31	24	81
		+93%	+75%	+106%	+46%	+90%

Detailed reports are being circulated to directors and chairs via email every week.

# Update: Application trends (Mar 2)

Applied Academic Plan Type Code	GRAD Status Group 1 / GRAD Status Group 2				
	Applied	Admitted			Awaiting Decision
		Total	Accepted	Awaiting Response	Total
<b>Grand Total</b>	<b>5,276</b> 4,385 +20%	<b>1,651</b> 1,513 +9%	<b>834</b> 515 +62%	<b>695</b> 881 -21%	<b>2,935</b> 2,290 +28%
Certificate	<b>63</b> 18 +250%	<b>57</b> 12 +375%	<b>46</b> 9 +411%	<b>8</b> 1 +700%	<b>5</b> 5 0%
Certificate - Online	<b>41</b> 61 -33%	<b>15</b> 14 +7%	<b>12</b> 11 +9%	<b>3</b> 3 0%	<b>26</b> 74 -41%
Doctoral Degree	<b>2,917</b> 2,314 +26%	<b>743</b> 733 +1%	<b>239</b> 155 +54%	<b>433</b> 538 -20%	<b>1,699</b> 1,278 +33%
Master's Degree	<b>1,968</b> 1,793 +10%	<b>645</b> 626 +3%	<b>382</b> 232 +65%	<b>235</b> 326 -28%	<b>1,139</b> 925 +23%
Master's Degree - Online	<b>285</b> 196 +45%	<b>189</b> 127 +49%	<b>154</b> 107 +44%	<b>15</b> 13 +15%	<b>66</b> 38 +74%

# Update: Application trends (Mar 2)

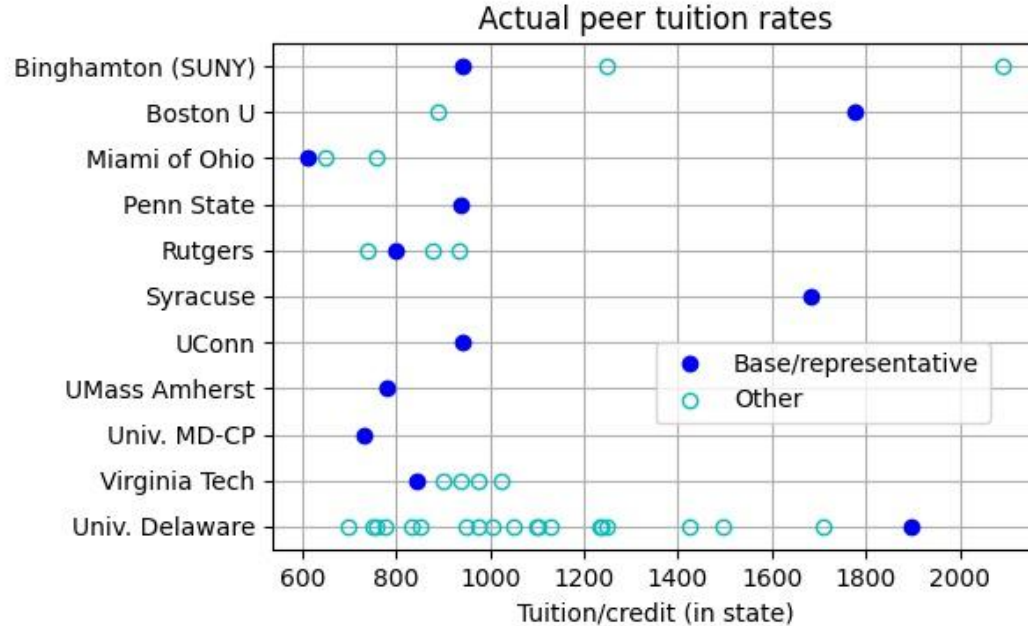
US or International / GRAD Status Group 1 / GRAD Status Group 2

Applied Academic Plan Type Code	US			International		
	Applied	Admitted		Applied	Admitted	
		Total	Accepted		Total	Accepted
Grand Total	3,191 2,365 +35%	1,122 919 +22%	523 372 +41%	2,085 2,020 +3%	529 594 -11%	311 143 +117%
Certificate	54 18 +200%	50 12 +317%	41 9 +356%	9 0 +900%	7 0 +700%	5 0 +500%
Certificate - Online	41 56 -27%	15 11 +36%	12 9 +33%	0 5 -100%	0 3 -100%	0 2 -100%
Doctoral Degree	1,641 1,228 +34%	484 489 -1%	116 104 +12%	1,276 1,086 +17%	259 244 +6%	123 51 +11%
Master's Degree	1,190 876 +36%	398 287 +39%	213 147 +45%	778 917 -15%	247 339 -27%	169 85 +99%
Master's Degree - Online	263 184 +43%	173 119 +45%	140 102 +37%	22 12 +83%	16 8 +100%	14 5 +180%

# Graduate tuition rates and why they matter

- Over half of our graduate students are paying for their own education.
- Last Fall, the revenue from these students at UD amounted to roughly \$13.5m.
- Most prospective graduate students who are applying to paying graduate programs will apply to just one graduate program.
- When we make an impression on new graduate students, the cost of attendance is a key factor.

# Our tuition base rate made us less competitive.



## Disadvantages:

- Complex.
- No pricing principles.
- Appears expensive.

# Revision principles and constraints

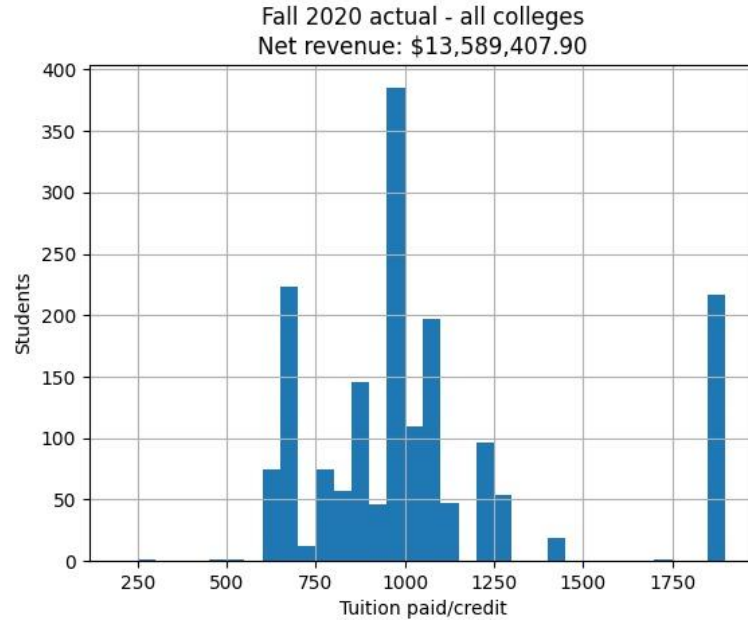
- Cost neutral.
- Focus on paying students and exclude students on contract.
- Simplify rates as much as possible.
- Use either detailed market studies or actual student demand as anchors to set prices.

# Proposed tuition rates

The base rate is \$950/credit. This will apply to over 90% of our graduate programs. The exceptions are few.

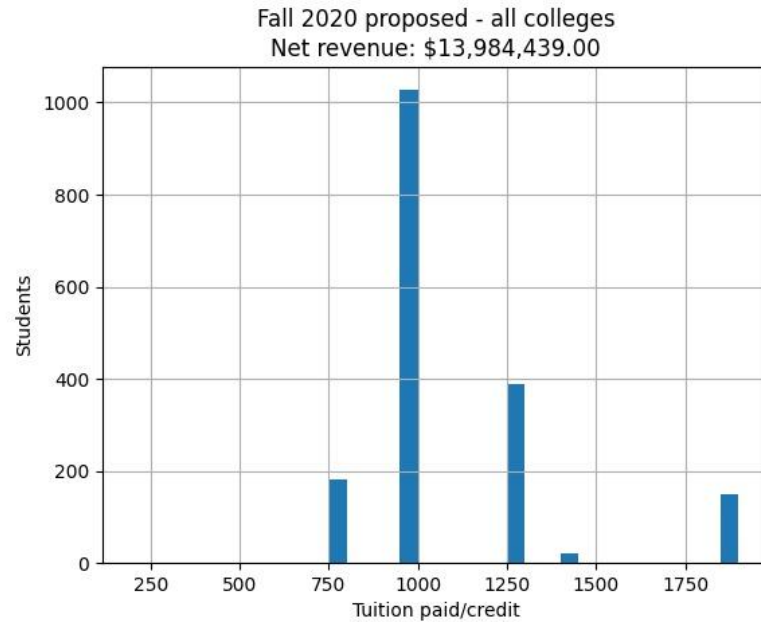
Education	\$750
Nursing, Physical Therapy, Computer Engg. masters, Cybersecurity and non-degree	\$1250
Epidemiology	\$1423
Computer science, Civil Engineering, Speech and Language Pathology, Electrical and Computer Engineering, Teaching English as a Second Language	\$1898

# Fall 2020: Existing rates

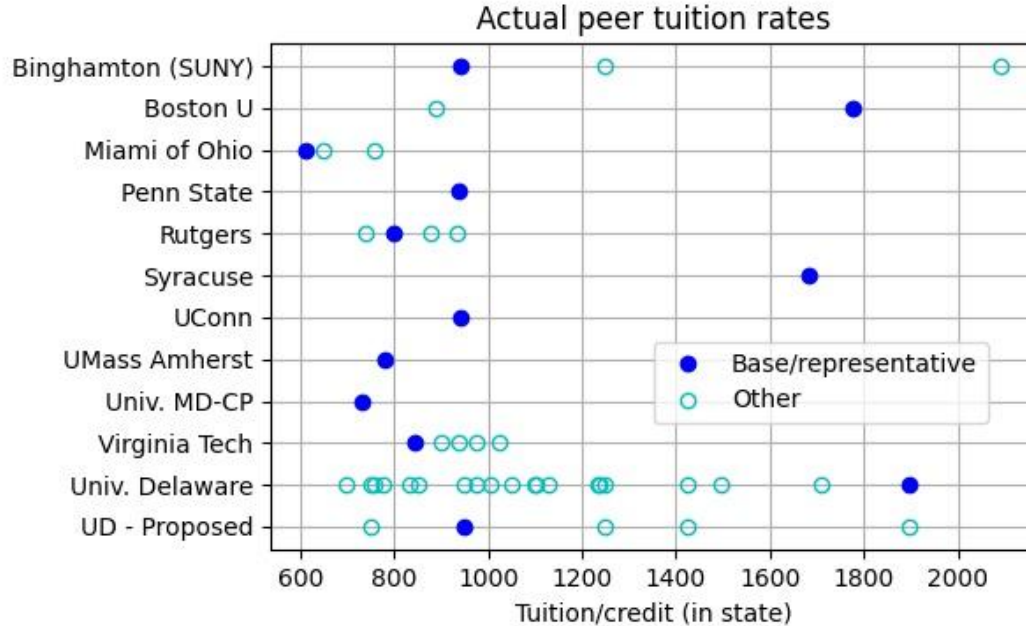




# Fall 2020: New rates



# Proposed rate structure



## Advantages:

- Simple.
- Exceptions easy to explain.
- Affordable.



### GRADUATE TUITION RATES

This graduate tuition plan establishes a base tuition rate of \$950 per credit but offers several rate exceptions as listed below. Base rate exceptions include tuitions that are higher or lower than the base due to various factors, including competitive market research, program focus and historical enrollment success, and program type (e.g., degree vs. non-degree). Over 90% of our programs fall under the base rate.

#### Rate Table

RATE CATEGORY/PROGRAM	RATE (per credit)
<b>Base</b>	\$950
<b>Exceptions</b>	
Civil Engineering – M.C.E, Ph.D.	\$1,898
Computer Science – M.S., Ph.D.	\$1,898
Electrical and Computer Engineering – Ph.D.	\$1,898
Speech-Language Pathology – M.A.	\$1,898
Teaching English as a Second Language – M.A.	\$1,898
Public Health (Epidemiology Concentration) – M.P.H.	\$1,423
Cybersecurity – M.S.	\$1,250
Doctor of Nursing Practice – D.N.P.	\$1,250
Electrical and Computer Engineering (in-person/online) – M.S.	\$1,250
Graduate College Non-Degree	\$1,250
Nursing Certificate – Post-Master's	\$1,250
Nursing Science – Ph.D. and M.S.N.	\$1,250
Physical Therapy	\$1,250
Childhood Foreign Language Education – M.A.	\$750
Early Childhood Development and Programming – M.A.	\$750
Educational Leadership – M.A., Ed.D.	\$750
Educational Technology (in-person/online) – M.Ed.	\$750
Exceptional Children and Youth (in-person/online) – M.Ed.	\$750
Human Development and Family Sciences – M.S., Ph.D.	\$750
Literacy (online) – M.Ed.	\$750
School Psychology – M.A., Ed.S.	\$750
Teacher Leadership (online) – M.Ed.	\$750

# Update: Peer mentoring

At our Friday Directors Meeting, we will have peer mentoring presentations and a panel discussion.

Mentor Collective is a company that provides peer and alumni matches and training. We will learn more about what they can provide to our graduate students.



# Appeal: Awards committee

We give out a substantial number of competitive fellowships every year (Doctoral, Dissertation, Graduate Scholars, Unidel Graduate Fellowships).

They support students.

They advance graduate education by incentivizing what we value (opportunity, quality, diversity, supportive units).

The Graduate College needs your help. Please consider serving or nominating a talented person to serve. Contact LaRuth ([mcafee@udel.edu](mailto:mcafee@udel.edu)).

# Update: COVID 19

- Vaccine is administered by the state. UD supports the effort. UD is not able to coordinate groups of faculty and staff to be vaccinated.
- More than a quarter of the state population (over 250,000) is in Phase 1a or 1b. Delaware received 50,000 doses last week, and we have received 8000 of the Johnson & Johnson single shot doses. As of last Wed, DE has administered 236,000 doses.
- Faculty, staff and graduate TA's and RA's are included in Phase 1b.
- UD is unable to coordinate vaccination for UD faculty, staff and graduate students on contract. We are trying.
- There are stages within Phase 1b. Please be patient.
- If you are offered the vaccination elsewhere, you are encouraged to take it.

Ground truth:

<https://coronavirus.delaware.gov/vaccine/>

<https://www.udel.edu/home/coronavirus/>

<https://www.udel.edu/home/coronavirus/return/faq/#vaccinations>

# Reporting to the Faculty Senate

Our By-laws require that "the Dean of the Graduate College shall provide an annual report to the Senate to be presented as an agenda item of the Faculty Senate during either the April or May Faculty Senate meeting."

It will be added to the May Faculty Senate agenda.

# Questions?







# Graduate College Council

2<sup>nd</sup> Meeting of Spring 2021

8 March 2021

# Agenda



1. Call to order
2. Secretary's Report – (1 min)
  - a. Approval of agenda
  - b. Approval of minutes (from February meeting)
3. Dean's report and questions (Rossi) – (20 min)
  - a. Strategic plan update
  - b. Graduate Admissions update
  - c. Peer Mentor training (Mentor Collective)
  - d. Re-staffing of the Awards Committee
  - e. Update on Graduate Tuition
  - f. Update on Ombudsman
  - g. Update on Covid-19 Issues and Policies, Q&A period
4. Update on Formation of New Standing Committee Proposals – (10 min)
  - a. Graduate Council Committee on DEI – Status of Committee Formation:
  - b. Establishment of *ad hoc* Committees
    - i. Committee on Data Management and Assessment (see attachment A)
    - ii. Advisory Committee on Online Education (see attachment B)
5. Standing reports – (5 min)
  - a. Graduate student report – Famatta Perry, GCG chair
6. Committee reports – (15 min)
  - a. Interdisciplinary Curriculum Committee (Richard Braun)
  - b. Graduate Student Life Committee (Amy Griffin)
    - i. proposal for vacation policy (see Attachment C).
  - c. Awards and Fellowships Committee (LaRuth McAfee)
7. College Liaison Reports – (15 min)
  - a. CEOE Program Report (James Corbett or CEOE representative) – *to be presented at the April meeting*
  - b. Discussion on Liaison Reports (5 min)
  - c. Activities across Colleges that relate to Grad College mission
8. New business
  - a. Any Graduate Council Members may bring an item before council for discussion
9. Adjourn

# Call to Order / Secretary's Report



## Agenda Items

1. Call to order
2. Secretary's Report
  - a. Approval of agenda
  - b. Approval of minutes (from February meeting)

# 3. Dean's Report and Questions

Dean Rossi – (~20 min)

- Strategic plan update
- Graduate Admissions update
- Peer Mentor training (Mentor Collective)
- Re-drafting of the Awards Committee
- Update on Graduate Tuition
- Update on Ombudsman
- Update on Covid-19 Issues and Policies, Q&A period

# 4. Update on Committee Proposals

## On the Formation of New Standing Committee Proposals –

Mark Parcels (10 min)

### A. Graduate Council Committee on DEI – Status of Committee Formation:

- CANR – Palaniappa Krishnan
- CAS – Alison Parker
- CEOE – Danielle Dixson
- CEHD – *pending (in touch with DEI program inventory)*
- CHS – Cole Galloway
- COE – *pending (Dean's office polling faculty)*
- LCBE – Kyle Emich
- Biden School – *pending (in touch with Biden DEI standing committee)*

Plan to have Committee Meeting with Charge of Committee by April Grad Council Meeting

## 4. Update on Committee Proposals

### On the Formation of New Standing Committee Proposals –

#### B. Establishment of *ad hoc* Committees

- Committee on Data Management and Assessment (see attachment A)
- Advisory Committee on Online Education (see attachment B)

Although both committees had majority support as standing committees, the margin of support was narrow. As a compromise, each committee will be established on an *ad hoc* basis with 1 trial year. At that time, each committee will make a report of activities to the graduate council and will be brought to a vote to:

- (1) be disbanded
- (2) remain an *ad hoc* committee for another year
- (3) become a standing committee

## **Graduate College Committee on Data Management and Assessment**

This committee shall be composed of (5) faculty members who shall serve renewable two-year terms, and two additional representatives chosen by the Dean of the Graduate College. This committee will be co-chaired by an elected faculty member and an appointed representative of the Dean. This committee shall:

- 1) Work with the Graduate College Administration to:
  - a) Optimize the recently rolled-out dashboard for Graduate Directors
  - b) Test and provide feedback on the interfacing of this or other tools with SLATE
  - c) Increase the capability of this system to provide degree tracking, student demographics, student progress and program success
  - d) Aid in the testing of tools for conducting uniform assessment of graduate programs, for internal optimization and APR reporting.
- 2) Seek feedback from Graduate Directors, faculty and the Graduate Council on the use of any new additional tools or platforms prior to large scale implementation.

This committee will work in close association with the CTAL, OCM and staff within the Dean's office to help in the development, testing and rollout of each new tool or platform.

This *ad hoc* committee will be established with a one academic year provisional term (April 2021-> April 2022) with a report of progress required at each Graduate Council meeting starting in the fall of 2021 and an overall report to the Graduate Council at the April 2022 meeting. At this time, the Council will vote to: (a) disband the committee, (b) continue with the committee on a renewable *ad hoc* basis or (c) vote to establish this as a Standing Committee.

## Advisory Committee on Online Graduate Education

This committee shall be composed of (5) faculty members who shall serve renewable two-year terms, and two additional representatives chosen by the Dean of the Graduate College. This committee will be co-chaired by an elected faculty member and an appointed representative of the Dean. This committee shall:

1. Promote the development, marketing, and evaluation of online graduate courses and programs to extend the reach and provide consistent quality of UDOonline.
2. Provide information to program directors, departments and faculty on:
  - a. Market analysis prior to program development
  - b. Information and access to tools and methods of program development, publicity, and delivery at course and program levels
  - c. Revenue distribution for revenue-generating online programs
3. Make recommendations to the Graduate College on opportunities for growth of our online presence.

This committee will work in close association with the PCS, OCM, graduate directors, and staff within the Graduate College Dean's office to accomplish these endeavors.

This *ad hoc* committee will be established with a one academic year provisional term (April 2021-> April 2022) with a report of progress required at each Graduate Council meeting starting in the fall of 2021, and an overall report to the Graduate Council at the April 2022 meeting. At this time, the Council will vote to: (a) disband the committee, (b) continue with the committee on a renewable *ad hoc* basis or (c) vote to establish this as a Standing Committee.



## 5. Standing Reports

a. Graduate student report: –Famatta Perry, Graduate Student, CANR



## 6. Committee Reports

- Interdisciplinary Curriculum Committee (Richard Braun, chair)
- Graduate Student Life Committee (Amy Griffin, chair)
- Awards and Fellowships Committee (LaRuth McAfee, chair)

# ICC Report (slide 1 of 1)

- ICC meeting most non-Grad Council Mondays in 21S (next: Mar 15)
- The following programs have been moved along in Curriculog:
  - PhD/MS in Neuroscience
  - PhD/MS in Microbiology
  - PhD/MS in Education and Social Policy
- Still to do
  - Graduate Certificate in Community Engagement (waiting to see in curriculog)
  - Graduate Certificate in Sustainability (changes recommended)
- Upcoming: Bylaws changes to
  - Fill in gaps in original version re starting interdisciplinary programs
  - Modify Pathways to reflect practice in approval process

# Graduate Student Life Committee



- Amy Griffin, Chair – will share screen

# *Update on Nominations Processes for Graduate College Fellowships/Awards*

**LaRuth C. McAfee, Ph.D.**

Senior Assistant Dean, Graduate College

[mcafee@udel.edu](mailto:mcafee@udel.edu)

**Graduate College Council Meeting**

**March 8, 2021**



# *Current Status of Graduate College Fellowships/Awards*

## **Review of Doctoral Fellowship, Dissertation Fellowship nominees completed**

- Doctoral Fellowship – 62 nominees, 25 offers, 7 students waitlisted
- Dissertation Fellowship – 59 nominees, 25 offers, 3 students waitlisted

## **Review of nominees submitted by the first deadline for Unidel Fellowship, new Graduate Scholar Award completed**

- Unidel Fellowship (goal of 12) – 34 nominees, 10 offers
- Graduate Scholar Award (goal of 30) – 40 nominees, 19 offers

## **Review of nominees submitted by second deadline for Unidel Fellowship, new Graduate Scholar Award underway, as well as Graduate Scholar Award renewals**

- New nominees – GSA (25 new nominees+2 updates from R1), Unidel (15 new nominees)
- Unidel Fellowship, new Graduate Scholar Award nominees not selected in first round will again be considered

# Overall Summary by Academic Program

(December, January Deadlines)

	Nominations	Offers
Applied Mathematics	2	1
Applied Physiology	3	2
Art History	8	6
Bioinformatics Data Science	4	2
Biological Sciences	7	2
Biomechanics & Movement Science	4	2
Biomedical Engineering	8	4
Chemical Engineering	9	2
Chemistry & Biochemistry	15	5
Civil Engineering	5	0
Climatology	3	1
Communication Sciences and Disorders	7	2
Computer Science	4	2
Criminology	2	1
Disaster Science & Management	5	3
Economic Education	2	1
Economics	1	0
Education	8	5
Educational Statistics and Research Methods	2	0
Electrical & Computer Engineering	10	4
English	4	2
Entomology & Wildlife Ecology	1	1
Financial Services Analytics	2	0
Geography	6	2

	Nominations	Offers
Geological Sciences	1	1
Health Behavior Science and Promotion	1	1
History	1	0
Human Development & Family Sciences	2	1
Linguistics	7	2
Marine Policy	1	1
Marine Studies, Water Science & Policy	3	1
Materials Science & Engineering	9	3
Mathematics	2	0
Mechanical Engineering	9	3
Medical Sciences	2	0
Microbiology	1	0
MPH Public Health	1	1
MPP Public Policy	1	0
Nursing Science	1	0
Oceanography	2	1
Physical Therapy	3	2
Plant & Soil Sciences	2	1
Political Science & International Relations	8	5
Preservation Studies	2	2
Psychological & Brain Sciences	9	3
School Psychology	1	0
Sociology	2	1
Urban Affairs & Public Policy	3	0

# Overall Summaries by Demographic Group

(December, January Deadlines)

## All Fellowships/Awards:

	Nominees	Offers	STEM Noms	STEM Offers
American Indian	1	1	1	1
Asian American	7	3	6	2
Black/African American	27	14	12	4
Hispanic/Latinx	13	7	8	4
Multiethnic	9	3	5	0
International	63	20	39	12
Unknown	4	2	2	1
White	71	29	46	18
URM	49	25	25	9
Female	114	53	63	26
Total	195	79	119	44

## New Graduate Scholar Awards:

	Nominees	Offers	STEM Noms	STEM Offers
First-generation college student	14	5	12	3
Member of racial or ethnic group historically underrepresented	33	16	16	5
Documented disability or chronic medical condition	3	2	1	0
Evidence of financial need	9	4	6	2
Unexpected extenuating personal circumstances	4	1	2	0
Other	3	0	3	0



# February Deadline Summary by Academic Program

## Unidel, New Graduate Scholar Awards:

	Nominations
Africana Studies	2
Athletic Training	1
Bioinformatics Data Science	1
Biomechanics & Movement Science	2
Communication Sciences and Disorders	2
Data Science	1
Disaster Science & Management	1
Educational Leadership	1
Energy & Environmental Policy	1
English	4
Fashion & Apparel Studies	1
Fine Arts	2
Geological Sciences	3
History	2
Linguistics	1
Marine Studies	3
MPP Public Policy	2
Music	2
Physics	2
Plant & Soil Sciences	2
Psychological & Brain Sciences	2
School Psychology	1
Sociology	1
Urban Affairs & Public Policy	1
Water Science & Policy	1

## Graduate Scholar Awards Renewals:

	Nominations
Animal & Food Science	1
Biological Sciences	5
Biomedical Engineering	3
Chemistry & Biochemistry	3
Civil Engineering	1
Disaster Science & Management	1
Education	2
Educational Statistics & Research Methods	2
English	2
Entomology & Wildlife Ecology	1
Geological Sciences	1
Human Development & Family Sciences	1
Marine Studies	1
Mechanical Engineering	1
Psychology	1
School Psychology	1
Sociology	1
Urban Affairs & Public Policy	1

# February Deadline Summaries by Demographic Group

## Unidel, Graduate Scholar Award Nominees and Renewals:

	Nominees	STEM Noms	Renewals	STEM Renewals
American Indian	1	0	0	0
Asian American	2	1	1	1
Black/African American	14	2	7	1
Hispanic/Latinx	4	4	6	2
Multiethnic	1	0	4	3
International	5	2	0	0
Unknown	2	0	0	0
White	13	6	11	10
URM	21	6	17	6
Female	26	9	24	13
Total	42	15	29	19

## Graduate Scholar Awards:

	New All	New STEM	Renewal All	Renewal STEM
First-generation college student	11	5	13	8
Member of racial or ethnic group historically underrepresented	22	5	18	7
Documented disability or chronic medical condition	4	0	1	1
Evidence of financial need	13	1	9	5
Unexpected extenuating personal circumstances	2	0	7	3
Other	3	1	2	1

# *Committee Members Needed!*

**Graduate College Council Awards & Fellowships Committee developed to make recommendations on Graduate College funding competitions/practices**

## **Potential topics for committee to discuss:**

- Timelines – did we take nominations too early this year?
- Requirements, importance of components (e.g., rubrics)
- Considerations of diversity – race/ethnicity, sex, disciplines, etc.
- Guidance/resources that would be helpful for programs

**Committee also provides support for identifying faculty reviewers**

# 7. College Liaison Reports

a. College Program Reports:

College of Earth, Ocean and the Environment (April)

College of Education and Human Development (May)

b. Activities across Colleges that relate to Grad College mission

# 8. Introduction of any Additional New Business

- All Councilors have the right to introduce New Business items





## 9. Closing Business

### Timing of next meeting

- Monday, April 12, 3:30 – 4:30 PM
  
- Adjournment