



## DECCCI Update October 2022

Jerri Husch, PhD  
DECCCI Coordinator

Welcome to the October **Delaware Climate Change Coordination Initiative (DECCCI)** update. This summary shares responses to the “4 Question Poll” and links to some interesting climate change materials that we’ve added to the DECCCI Repository. We are pleased that the research and repository are evolving nicely with more and more climate change materials being added. As we continue to collect materials from across a variety of sectors, once again we ask for your support and share with us, any---and all, climate change related information you may come across. We are in the “wide open” stage of information collection and are interested in all forms of materials, from reports, to blogs, to newsletters, videos, project documents and so on. In addition, we are collecting ideas about climate change related activities, including research, workshops and community events.

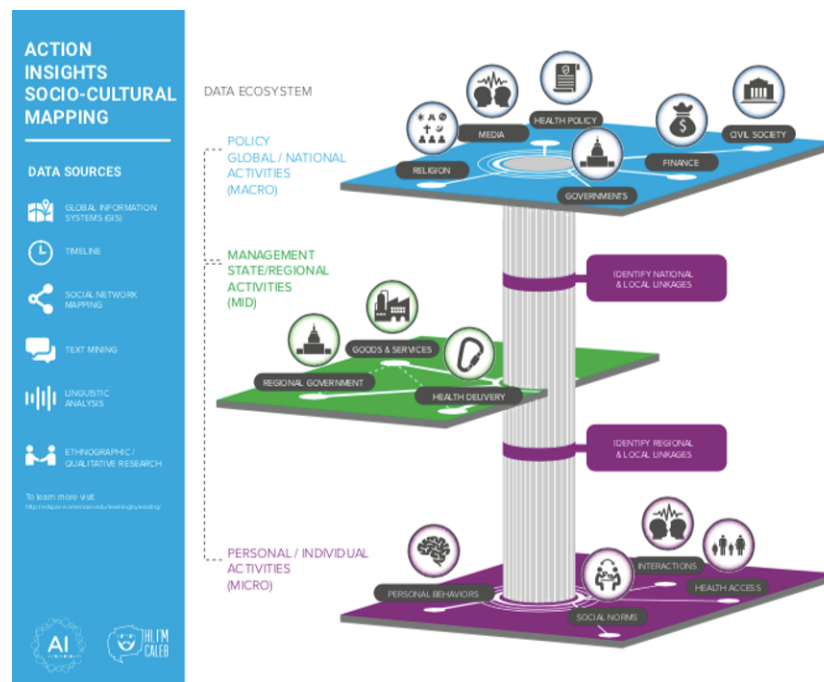
### The DECCCI Research Model

DECCCI research uses qualitative and “ethnographic” methods. Called, “Action Insights,” this method focusses on gathering information about the culture, activities and “meaning” of climate change to people. This model and Action Insights helps identify and analyze the specific socio-cultural, political and economic details that frame climate change adaptation activities in any given geographic location. DECCCI data collected will include information related to local, county and state activities, institutional mandates and organizational competencies as well as individual skills. As part of the DECCCI research process, in October we actively:

- Collected information about past and current Extension climate change research and activities
- Continued to identify Extension program leaders, project managers and other personnel interested in climate change issues
- Continued review of climate change materials with a focus on UD Extension, UD departments, DE non-profits, and state entities

- Reviewed strategic plans related to climate change across NE Extension programs, state programs and other institutions with climate change responsible offices, departments, divisions, etc
- Collected geo-spatial data about location and timing of activities.

Began interviews and “listening sessions” with Extension personnel. To better analyze and understand climate change related activities, all information is categorized according to its “level” in the climate change “system”. Thus, information related to Extension, University, State and local activities is first identified by its function and organization. Thus, “Macro” level information is related to international, national and state level actions, and actors, including actions and outputs of national and state government institutions/organizations. “Mid” level information is related to regional and county information and “Micro” level refers to municipal and community level data. When taken together and integrated, the data will allow the relationships, linkages and “embeddedness” of Delaware climate change related activities to be represented and visualized across multiple dimensions.



Example infographic showing integrated “levels” of climate change activities occurring simultaneously in any given location.

## Preliminary Research: The “4 Question Poll”

To begin to gain insights about the role of climate change for individuals, a short answer poll was developed. The goal of the poll was to see what terms and language choices were used by the respondents with respect to 4 basic questions about climate change.

Responses to the simple “learn, think, feel and do” questions offer insight into people’s understanding, views, feelings and actions related to climate change issues. First piloted at the

CANR Festival in September, then specifically disseminated in October via a Qualtrics poll,<sup>[1]</sup> to UD Extension target population, across all levels engagement, including volunteers, the visualizations below offer a quick way to see the patterns of terms people use to respond to these questions.

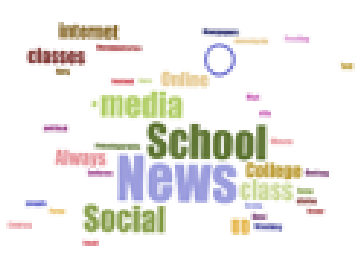
---

<sup>[1]</sup> The Qualtrics poll remains open for inputs. Please contribute your thoughts at:  
[https://delaware.ca1.qualtrics.com/jfe/form/SV\\_eyTxU0iPS6FH0ku](https://delaware.ca1.qualtrics.com/jfe/form/SV_eyTxU0iPS6FH0ku)

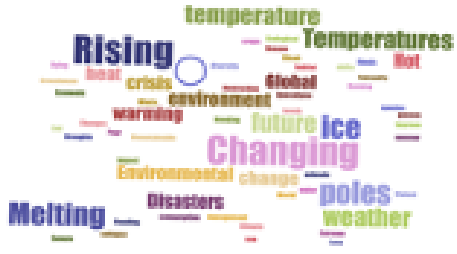


## UD Extension "4 Questions" Poll

CANR Responses, September 2022



Question 1---Learn about CC?



Question 2 ---Think About CC?

# 42 CANR RESPONSES



Question 3--- Feel About CC?



Question 4 ---- Do About CC?

88 UD Extension Responses  
October 2022



LEARN



THINK



FEEL



DO

## The Repository

A key focus of current DECCI activities is the continued growth of the data repository and the compilation and categorization of information sources. The repository has continued to expand as we collect, code and begin to analyse the content of materials.

# DECCCI DATA REPOSITORY



One category that we have compiled as a foundation are links to organizations and institutions that have provided a foundation for climate change work over the past decade. These sites contain links to general information about climate change and serve as an excellent starting point for background information. Sample institutional links are below.

## MACRO

### International Level

- Sustainable Development Solutions Network (SDSN):  
<https://www.unsdsn.org/climate-and-energy>
- World Economic Forum (WEF) : <https://www.weforum.org/topics/climate-change/>
- FAO:  
<https://www.fao.org/climate-change/en/#:~:text=Climate%20change%20threatens%20our%20ability,atmosphere%20and%20triggering%20global%20warming.>
- UNEP(United Nations Environmental Program) Regional North American Office
- <https://www.unep.org/regions/north-america>
- UN Habitat Climate Change <https://unhabitat.org/topic/climate-change>
- UNDP (United Nations Development Program) Climate Change Adaptation  
<https://www.adaptation-undp.org/about>
- WHO (World Health Organization Climate Change  
[https://www.who.int/health-topics/climate-change#tab=tab\\_1](https://www.who.int/health-topics/climate-change#tab=tab_1)

### US National Level

- National Extension National Extension Climate Initiative(NECI)  
<https://nationalextensionclimateinitiative.net>
- US Resilience Toolkit <https://toolkit.climate.gov/regions/northeast>
- USDA-NRCS: <https://www.usda.gov/oce/energy-and-environment/climate/adaptation>
- Climate Change Resources at the National Academies  
<https://www.nationalacademies.org/topics/climate>

## MID

### State Level

- **Delaware Department of Natural Resources and Environmental Control (DNREC):**  
<https://dnrec.alpha.delaware.gov/climate-coastal-energy/climate-change/#:~:text=Climate%20change%20is%20already%20affecting,that%20leads%20to%20significant%20flooding> (fact sheets)
- **Time Magazine, No Change in DE CC Policy**  
<https://time.com/6228840/midterms-2022-climate-change-future/>
- **Resilient MA**  
Massachusetts Climate Change Clearinghouse  
<https://resilientma.mass.gov/home.html>
- **Connecticut**  
UConn Extension  
News Climate Change  
<https://news.extension.uconn.edu/category/climate/>
- **Delaware**  
University of Delaware Extension  
Understanding Climate Change Information Sheets  
<https://www.udel.edu/academics/colleges/canr/cooperative-extension/fact-sheets/understanding-climate-change/>
- **Delaware State University Extension**  
USDA Climate Hub Demonstration Project  
<https://www.desu.edu/news/2020/04/usda-spotlights-dsus-climate-hub-demonstration-project>
- **Maine**  
University of Maine Extension  
Maine Climate Change Adaptation Providers Network  
<https://extension.umaine.edu/climatesolutions/>

- **Maryland**  
University of Maryland Extension  
The Effects of Climate Change in Maryland  
<https://extension.umd.edu/resource/effects-climate-change-maryland>
- **Massachusetts**  
University of Massachusetts Extension  
UMass Extension Climate Change Program  
<https://ag.umass.edu/climate-change>
- **New Hampshire**  
University of New Hampshire Extension  
Climate Change  
[https://extension.unh.edu/natural-resources/outdoor-recreation-stewardship/climate-ada-  
ptation](https://extension.unh.edu/natural-resources/outdoor-recreation-stewardship/climate-ada-<br/>ptation)
- **New Jersey**  
Rutgers University  
New Jersey Climate Change Resource Center  
<https://njclimateresourcecenter.rutgers.edu>
- **Pennsylvania**  
Penn State University  
Penn State Climate Consortium (In Development)  
<https://iee.psu.edu/programs/consortia/climate-consortium>
- **Vermont**  
University of Vermont Extension  
Farming and Climate Change Program  
<https://www.uvm.edu/extension/sustainableagriculture/farming-climate-change-program>
- **New York**  
Cornell Extension  
Cornell Climate Smart Farming Extension Team  
<http://climatesmartfarming.org/climate-smart-farming-extension-team>
- **Rhode Island**  
Rhode Island Climate Change  
<http://www.riclimatchange.org>

**MICRO**

- **Delaware Municipalities and Communities**
- **Counties Most Concerned About Climate Change in Delaware**  
[https://www.kilgorenewsherald.com/counties-most-concerned-about-climate-change-in-delaware/collection\\_8bb109d9-6198-5ad4-bede-3cf7b0a5bdaf.html#4](https://www.kilgorenewsherald.com/counties-most-concerned-about-climate-change-in-delaware/collection_8bb109d9-6198-5ad4-bede-3cf7b0a5bdaf.html#4)
- **Nature Conservancy—Leading Delaware Forward**  
<https://www.nature.org/en-us/about-us/where-we-work/united-states/delaware/stories-in-delaware/conservation-policy-advocacy>

For more information, questions and ideas about DECCCI, please contact,

Jerri Husch, PhD  
DECCCI Coordinator  
University of Delaware Cooperative Extension

Husch@udel.edu