

# GROW YOUR OWN LIMA BEANS

## General Information

- *Phaseolus lunatus*, Lima Bean
- Fabaceae family
- Sunlight: full sun.
- Soil conditions: loose, evenly moist, well drained soil.
- Bush and pole varieties.



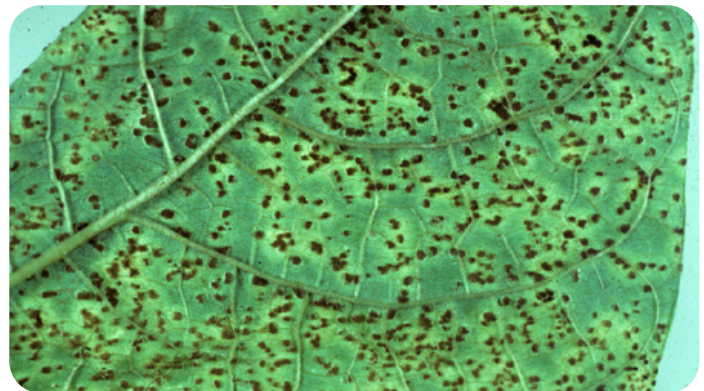
## Successful Cultivars

- Fordhook 242 (65 days) Bush type. Light green 4" pods, packed with 3-5 large beans.
- King of the Garden (105 days) Pole type. Can grow 12 ft., use sturdy support.
- Henderson bush (60-75 days) Bush type. Dwarf lima, very productive.



## Common Pests & Diseases

- Leaf Spot Disease
- Bean Anthracnose
- Bean Rust (pictured here)
- Bean Root Rot
- Bean Blight



UNIVERSITY OF DELAWARE  
COOPERATIVE  
EXTENSION

