

# GROW YOUR OWN BASIL

## General Information

- *Ocimum basilicum*, Basil
- Lamiaceae family
- Sunlight: Full sun.
- Soil conditions: well-drained soil, high in organic matter.
- Grows well in a container.
- Annual



## Successful Cultivars

- Genovese (68 days) Classic Italian variety. Large dark green leaves.
- Sweet Thai (64 days) Long green leaves, attractive purple stems and flowers. Spicy flavor.
- Amethyst (74 days) Large turned-down leaves, nearly black in color. Genovese type. (pictured here)



## Common Pests & Diseases

- Downy Mildew (pictured here)
- Grey Mold
- Basil Sunburn
- Thrips
- Fusarium wilt



UNIVERSITY OF DELAWARE  
**COOPERATIVE  
EXTENSION**



# GROW YOUR OWN PARSLEY

## General Information

- *Petroselinum crispum*, Parsley
- Apiaceae family
- Sunlight: Full sun.
- Soil conditions: well-drained soil, high in organic matter.
- Grows well in a container.
- Biennial



## Successful Cultivars

- Giant of Italy (75 days) Huge dark green leaves, great flavor.
- Wega (75 days) Dark green, deeply curled variety.
- Dark Green Italian Plain (80 days) Flat, deeply cut leaves.



## Common Pests & Diseases

- Septoria Leaf Spot (pictured here)
- Alternaria Leaf Blight
- Cercospora Leaf Blight
- Powdery Mildew
- Damping Off



UNIVERSITY OF DELAWARE  
**COOPERATIVE  
EXTENSION**





# GROW YOUR OWN DILL

## General Information

- *Anethum graveolens*, Dill
- Apiaceae family
- Sunlight: full sun.
- Soil conditions: grows best in loamy, well drained soil but can grow in poor soil.
- Grows well in a container.
- Annual



## Successful Cultivars

- Bouquet (45 days) Early flowering, large blooms, good for pickling.
- Fern Leaf (55-60 days) Productive, full dense leaves.
- Mammoth (70 days) Large vigorous plant, matures quickly. (pictured here)



## Common Pests & Diseases

- Downy Mildew
- Powdery Mildew (pictured here)
- Aphids
- Army worm
- Cut worm



UNIVERSITY OF DELAWARE  
**COOPERATIVE  
EXTENSION**



This program is brought to you in part by the University of Delaware Cooperative Extension, a service of the UD College of Agriculture and Natural Resources—a land-grant institution. This institution is an equal opportunity provider. This publication was created by Master Gardeners Rick Judd and Gail Hermenau. Photos courtesy of Gail Hermenau.

# GROW YOUR OWN THYME

## General Information

- *Thymus vulgaris*, Thyme
- Lamiaceae family
- Sunlight: full sun.
- Soil conditions: light, well-drained soil.
- Grows well in a container.
- Perennial



## Successful Cultivars

- English Thyme (90 days) Low growing perennial, gray-green leaves.
- Lemon Thyme (90-100 days) Golden variegated leaves, citrusy flavor. (pictured here)
- Common Thyme (180 days) Easy to grow, highly adaptable.



## Common Pests & Diseases

- Aphids
- Spider Mites (pictured here)
- Botrytis Rot
- Rhizoctonia Root Rot
- Alternaria Leaf Spot



UNIVERSITY OF DELAWARE  
**COOPERATIVE  
EXTENSION**





# GROW YOUR OWN ROSEMARY

## General Information

- *Salvia rosmarinus*, Rosemary
- Lamiaceae family
- Sunlight: full sun.
- Soil conditions: loose, well-drained soil.
- Grows well in a container.
- Perennial



## Successful Cultivars

- Common (80-100 days) Pungent, fragrant leaves.
- Arp (80-100 days) Beautiful, tall rosemary with intense fragrance. Cold tolerant, upright variety.
- Tuscan Blue (80-100 days) Tall, dark blue flowering variety. (pictured here)



## Common Pests & Diseases

- Powdery Mildew (pictured here)
- Downy Mildew
- Spittle Bugs
- Thrips
- Botrytis Rot



UNIVERSITY OF DELAWARE  
**COOPERATIVE  
EXTENSION**



This program is brought to you in part by the University of Delaware Cooperative Extension, a service of the UD College of Agriculture and Natural Resources—a land-grant institution. This institution is an equal opportunity provider. This publication was created by Master Gardeners Rick Judd and Gail Hermenau. Photos courtesy of Gail Hermenau.

# GROW YOUR OWN OREGANO

## General Information

- *Origanum vulgare*, Oregano
- Lamiaceae family
- Sunlight: full sun.
- Soil conditions: light, moderately fertile, well-drained soil. Can thrive in areas with tough growing conditions.
- Grows well in a container.
- Perennial



## Successful Cultivars

- Greek (80-90 days) Pungent, bold, earthy flavor.
- Italian (80-90 days) Large leaves, dries easily. (Pictured here)
- Golden Oregano (80-90 days) Golden colored foliage.



## Common Pests & Diseases

- Aphids
- Spider Mites (pictured here)
- Thrips
- Mint Rust
- Blight



UNIVERSITY OF DELAWARE  
**COOPERATIVE  
EXTENSION**





# GROW YOUR OWN SAGE

## General Information

- *Salvia officinalis*, Sage
- Lamiaceae family
- Sunlight: full sun.
- Soil conditions: sandy, loamy, well-drained soil.
- Grows well in a container.
- Perennial



## Successful Cultivars

- Common ( 80-90 days) Grey-green leaves, wide variety of culinary uses.
- Golden Sage (80-90 days) Golden-yellow and green variegated leaves. Bushy, compact habit. (pictured here)
- Pineapple Sage (80-90 days) Pineapple scented foliage.



## Common Pests & Diseases

- Spider Mites
- White Flies
- Downy Mildew (pictured here)
- Leaf Spot
- Mint Rust



UNIVERSITY OF DELAWARE  
**COOPERATIVE  
EXTENSION**



This program is brought to you in part by the University of Delaware Cooperative Extension, a service of the UD College of Agriculture and Natural Resources—a land-grant institution. This institution is an equal opportunity provider. This publication was created by Master Gardeners Rick Judd and Gail Hermenau. Photos courtesy of Gail Hermenau.

# GROW YOUR OWN CILANTRO

## General Information

- *Coriandrum sativum*, Cilantro
- Apiaceae family
- Sunlight: full to part sun.
- Soil conditions: loamy, well-drained soil.
- Cilantro (leaves) Coriander (seeds)
- Grows well in a container.
- Annual



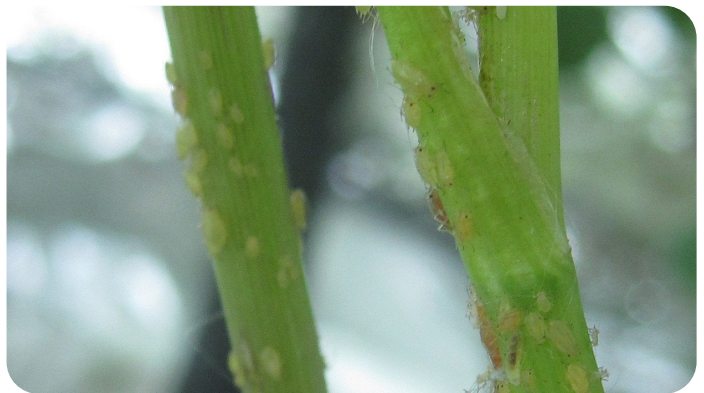
## Successful Cultivars

- Common (50-55 days) Earthy, bright flavor. (Pictured here)
- Calypso (50-55 days) Full, bulky plants, slow to bolt.
- Cruiser (50-55 days) Tidy, upright habit, slow to bolt.



## Common Pests & Diseases

- Powdery Mildew
- Bacterial Leaf Spot
- Aphids (pictured here)
- Cut Worm
- Army Worm



UNIVERSITY OF DELAWARE  
**COOPERATIVE  
EXTENSION**





# GROW YOUR OWN CHIVES

## General Information

- *Allium schoenoprasum*, Chives
- Amaryllidaceae family
- Sunlight: sun and part shade.
- Soil conditions: well-drained soil, rich in organic matter.
- Grows well in a container.
- Perennial



## Successful Cultivars

- Common (75-85 days) Bright green, slender leaves, mild onion flavor.
- Garlic (90 days) Thin, flat leaves, delicate garlic flavor, attractive white flowers. (pictured here)
- Dolores (75-85 days) Uniform slender leaves, upright habit.



## Common Pests & Diseases

- Damping Off
- Downy Mildew
- Onion Thrips (pictured here)
- Onion Maggot



UNIVERSITY OF DELAWARE  
**COOPERATIVE  
EXTENSION**



This program is brought to you in part by the University of Delaware Cooperative Extension, a service of the UD College of Agriculture and Natural Resources—a land-grant institution. This institution is an equal opportunity provider. This publication was created by Master Gardeners Rick Judd and Gail Hermenau. Photos courtesy of Gail Hermenau.

# GROW YOUR OWN MINT

## General Information

- *Mentha* sp., Mint
- Lamiaceae family
- Sunlight: full sun to part shade.
- Soil conditions: rich, moist, well-drained soil.
- Grows well in a container.
- Perennial, wide spreading, can become invasive.



## Successful Cultivars

- Spearmint (60-70 days)
- Peppermint (60-70 days) Strong mint flavored leaves. (Pictured here)
- Chocolate (60-70 days) Refreshingly pungent, chocolate flavored leaves.
- Orange (60-70 days) Similar to chocolate but with a touch of citrus orange flavored leaves.



## Common Pests & Diseases

- Spider Mites
- Mint Rust (pictured here)
- Flea Beetle
- Aphids
- Cut Worms



UNIVERSITY OF DELAWARE  
**COOPERATIVE  
EXTENSION**



This program is brought to you in part by the University of Delaware Cooperative Extension, a service of the UD College of Agriculture and Natural Resources—a land-grant institution. This institution is an equal opportunity provider. This publication was created by Master Gardeners Rick Judd and Gail Hermenau. Photos courtesy of Gail Hermenau.



# GROW YOUR OWN LAVENDER

## General Information

- *Lavandula angustifolia*, Lavender
- Lamiaceae family
- Sunlight: full sun.
- Soil conditions: low fertility, well-drained soil.
- Grows well in a container.
- Perennial



## Successful Cultivars

- Ellagance Purple (100-110 days) Bushy, uniform, with deep purple flowers. Winter hardy.
- Munstead (100-110 days) Compact, bushy habit. Bloom colors range from pale blue to dark violet.
- Hidcote Blue (100 days) Compact uniform habit, silvery foliage, deep violet-blue flowers.



## Common Pests & Diseases

- Spittle Bugs (pictured here)
- White Flies
- Aphids
- Root Rot



UNIVERSITY OF DELAWARE  
**COOPERATIVE  
EXTENSION**

