

GROW YOUR OWN CILANTRO

General Information

- *Coriandrum sativum*, Cilantro
- Apiaceae family
- Sunlight: full to part sun.
- Soil conditions: loamy, well-drained soil.
- Cilantro (leaves) Coriander (seeds)
- Grows well in a container.
- Annual



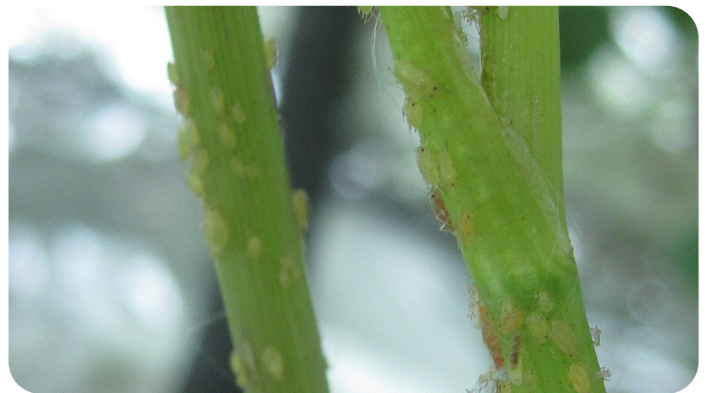
Successful Cultivars

- Common (50-55 days) Earthy, bright flavor. (Pictured here)
- Calypso (50-55 days) Full, bulky plants, slow to bolt.
- Cruiser (50-55 days) Tidy, upright habit, slow to bolt.



Common Pests & Diseases

- Powdery Mildew
- Bacterial Leaf Spot
- Aphids (pictured here)
- Cut Worm
- Army Worm



UNIVERSITY OF DELAWARE
COOPERATIVE
EXTENSION

