

Kent Clover December 2019

69 Transportation Circle, Dover, DE 19901

Phone: 302-730-4000

FAX : 302-735-8130

<http://extension.udel.edu/4h>



UNIVERSITY OF DELAWARE

COOPERATIVE
EXTENSION



December

- 2– Diamond Clover Intents Due
- 2– National Conference Applications Due
- 2– Trim-A-Tree Entries In Place
- 5– Kent County Livestock Advisory
- 6– Teddy Bear Donations Due
- 8– Holiday Fun Day
- 17– Junior Council Meeting
- 18– Club News Due
- 24-1– Kent County Extension Office closed
- 27– Statewide 4-H Holiday Ice Skating Party

January 2020

- 2– Level 6 Diamond Clover Committee Meeting
- 3-Public Speaking Entries Due
- 12– Public Speaking Contest
- 15– State Camp Scholarship Application Due
- 17-19– Junior Leader Retreat
- 20– MLK Day– Office Closed
- 21– Leaders Meeting
- 21-Junior Council Meeting
- 21-4-H Exchange Meeting

Dear 4-H'ers, Parents, and Leaders,

We have several county events coming up in the month of December. 4-H clubs will be busy decorating Christmas trees with handmade ornaments and placing them throughout the county at various locations for our annual County Trim-A-Tree event. This activity certainly allows the holiday spirit to be spread to so many individuals during this special time of the year as many beautiful decorated trees will be completed by Kent County 4-H clubs. In addition, 4-H members will also collect and donate Teddy Bears for our annual Teddy Bear drive. These bears will certainly help to make a difficult time being experienced by someone in the hospital during the holiday a little better. Clubs will also be very active with additional community service activities throughout this time of the year. We are very fortunate to have so many caring 4-H members and volunteers in our county that continually try to do many activities that help to make a difference in the lives of others.

Upcoming events in December include Holiday Fun Day and the annual 4-H Statewide Skating party. Information about each of these activities can be found in this newsletter and we encourage you to participate in one or all of these events.

As the holiday season fast approaches, we would like to take this time to wish everyone Happy Holidays and thank you for your many efforts and work on behalf of the Kent County 4-H Program. We look forward to seeing you at a future 4-H event!

Yours in 4-H,

Kristin Cook, Extension Educator, 4-H & Youth Development



Amazon Smile to Benefit Delaware 4-H Foundation

During this Holiday Season, please consider using Amazon Smile with **Delaware 4-H Foundation** as the beneficiary. Amazon will donate 1/2 to 1 % of all your purchases to the foundation.

Share this link: <http://smile.amazon.com/ch/51-0236118>





25th Annual

TEDDY BEAR DRIVE

***Our goal is to collect
one bear per patient—Please help
us reach 200 Bears***

Bears are due to the 4-H Office by
December 6th or can be brought to Holiday
Fun Day on Sunday, December 8th
Bears are donated to the Home for the
Chronically Ill in Smyrna, De

Favorite Foods Training

January 23, 2020

Location: Kent County Extension Office

Starting at : 6:30 PM

RSVP by January 21st to

cadv@udel.edu or [HERE](#)



Diamond Clover Intent Forms Due December 2, 2019



Delaware 4-H members are eligible to participate in the Diamond Clover Award program. The Diamond Clover Award consists of six levels, each steadily advancing in intensity and achievement over the last. It is intended to take a 4-H member at least six years to complete. The nice thing about this award is that many 4-H members are already doing the work all you need to do is complete the forms. Once you complete the final level, The Diamond Clover, you will have completed an amazing journey that will benefit you forever. The Diamond Clover Award will look pretty good on your college application too! To find out more, visit the Diamond Clover site on the State web-site: <https://www.udel.edu/academics/colleges/can/cooperative-extension/personal-economic-development/4H-youth-development/scholarships-awards/diamond-clover/>

Anyone working towards Level 6, Diamond Clover Award should email Ms. Cook at kristin@udel.edu to start the process.



Fifer Orchards Front Porch Demos

Thank You!
Pony Pals 4-H Club
Fifer's Holiday Open House



The University of Delaware does not discriminate against any person on the basis of race, color, national origin, sex, gender identity or expression, sexual orientation, genetic information, marital status, disability, religion, age, veteran status or any other characteristic protected by applicable law in its employment, educational programs and activities, admissions policies, and scholarship and loan programs as required by Title IX of the Educational Amendments of 1972, the Americans with Disabilities Act of 1990, Section 504 of the Rehabilitation Act of 1973, Title VII of the Civil Rights Act of 1964, and other applicable statutes and University policies. The University of Delaware also prohibits unlawful harassment including sexual harassment and sexual violence.

Holiday Fun Day – Sunday, December 8th

Time: 2:00 pm

Place: Kent County Extension Office

69 Transportation Circle

Dover, DE 19901



Entry set up begins at 1:30 pm to be finished by 2:00 pm

Judging begins at 2:15 pm

Admission: Please bring toiletries for the local homeless shelters

Categories: Individual and Group categories for Gingerbread House only. Individual entries are to be completed by one (1) member only. Group entries must be two (2) or more members in the same age division range. If mixed ages, the entry will be judged on the oldest member. **MEMBERS ARE LIMITED TO ONE ENTRY PER CATEGORY . Cookie entries should have 4 cookies per entry on a paper plate.**

Gingerbread House: 1. Decorated house with NO outside scene on exhibit

Any Embellishment that extends beyond the house (except icing, coconut, etc.) used for ground cover is considered an Outside Scene.

2. Decorated House with Outside scene

Base should be no larger than 12 inches X 12 inches for the Gingerbread Houses - NOTE: only edible decorations may be used in the display

Cookies:

1. (4) Drop Cookies – made by dropping spoonful's of dough onto the baking sheet - i.e., chocolate chip, oatmeal raisin, etc.

2. (4) Rolled Cookies – a rolling pin is used to roll out cookie dough typically decorated for example – gingerbread, sugar cookies

3. (4) Bar cookies – baked in a rectangular or square pan and then cut –usually into rectangular or square serving pieces – for example, blondies, lemon bars

Embellished Stocking: 1. Stockings will be judged on age category.

Please bring a decorated stocking to be donated to a local homeless center. These stockings will be filled with toiletries purchased by the Leader's Association. Please keep in mind when decorating that the stockings will be packed and transported to local shelters.

Wreath:

1. Decorated wreath with a Christmas Holiday Theme (any media permitted)

All Categories (4-H age as of January 1, 2020)

Cloverbuds 5-7

Beginners 8-10

Juniors 11-13

Seniors 14-19

Raffle Drawing

A raffle is held at every Leader's Meeting with those who attend. Must be present to win. Tickets remain in the drawing all year long. More you attend the more chances you have to win!

Kent County 4-H Leaders Meetings

Save the Dates

January 21st starting at 7:00 PM

February 18th starting at 7:00 PM

March 17th starting at 7:00 PM

All meetings are held at the Kent County Extension Office.

Hope to see all Leaders, Volunteers and interested parents.

Public Speaking Contest - Sunday, January 12th

The Kent County Public Speaking Contest will be held at the Kent County Levy Court Office, 555 Bay Rd., Dover. **Times of arrival are staggered: Juniors and Seniors will begin 1:00 pm; Beginner Categories and Cloverbuds will begin at 2:00 pm.** This is a great time to get started by choosing a topic you would like to talk about in this contest. Please keep these ideas in mind when writing your speech. Public Speaking participants should write speeches with topics that are special or interesting to them. Public Speaking is not a demonstration contest so posters and props should not be used. You have lots of time to write and practice your speech. When choosing a topic, consider your other 4-H projects, your pets, school activities, or just a special community issue that you would like to stress. Your speech can be serious, funny or sad. All speeches should be informational and they will be scored on the organization of the information, use of communication skills and contact with the audience. The participants should write his or her own speech. Check out the [State 4-H Events & Forms](#) website for resources to prepare for this contest.



Public Speaking Contest Registration Form DUE January 3rd

ENTRIES ACCEPTED AFTER THE DEADLINE MAY NOT BE INCLUDED IN THE PUBLISHED PROGRAM

Online registration available at the Kent County 4-H website under [Events & Forms](#)

State Camp Scholarship

Applications Due January 15, 2020

State Camp Scholarship applications

Can be found online under Events & Forms: <https://www.udel.edu/canr/cooperative-extension/personal-economic-development/4H-youth-development/by-county/kent-county/>

Or at the end of the newsletter

Late Applications may limit funds availability

Kent County 4-H Public Speaking Contest (January 12, 2020)

Registration Form Due January 3rd

IN ORDER TO BE LISTED IN THE PROGRAM, PARTICIPANT MUST BE ENTERED WITH SPEECH TITLE BY DEADLINE

The Kent County 4-H Public Speaking Contest is held at the Kent County Levy Court Building at 555 Bay Road, Dover. The start times are staggered: Juniors and Seniors will begin at 1:00 pm and Beginner Categories and Cloverbuds will begin at 2:00 pm.

<u>Division</u>	<u>Age</u>	<u>Minimum Speech Time</u>	<u>Maximum Speech Time</u>	<u>Arrival Time</u>
Beginners	8-9	1.5 minutes	3 minutes	2pm
Beginners	10-11	2 minutes	4 minutes	2pm
Juniors	12-13	4 minutes	6 minutes	1pm
Seniors	14-19	5 minutes	7 minutes	1pm

Rule: 1 point for every 15 seconds over or under the required length will be deducted from the final score.

Audience should not be asked if there are any questions at the conclusion of the speech.

Name: _____ Club: _____

Address: _____ City: _____ Zip: _____

Phone: _____ 4-H age as of January 1, 2020 _____

Email: _____

Category: Cloverbud (5-7) _____ Beginner (8-9) _____ Beginner (10-11) _____
(Based on 4-H age) *Cloverbuds see below* Junior (12-13) _____ Seniors (14-19) _____

Topic _____

Speech Title _____

FOR CLOVERBUDS ONLY

Cloverbuds should fill in the blanks with their own answers.

Please limit the responses by completing the sentences. Do not add additional sentences.

Use this form, copy, or hand write this on a note card. And bring it with you the day of the contest. Do not submit this with the above registration.

Please arrive at 2 pm on the day of the event!

Hello. My name is _____.

I am _____ years old.

I go to _____ school and am in _____ grade. I

am a member of the _____ 4-H club.

My favorite part about 4-H is _____.

One day I want to _____.

National 4-H Conference

Washington, DC

March 28– April 2, 2020

Application Due December 1st

National 4-H Conference is the annual premiere national civic engagement opportunity for 4-H members across the country. Conference is a hands-on, working conference in which delegates participate in a variety of programs and activities. Participants have the opportunity to practice and apply in a real world setting their newly developed and refined skills.

Who can apply? Delaware 4-H'ers in good standing, currently in their sophomore or junior year of high school are encouraged to apply. For more information see application at the end of the newsletter or visit the [State 4-H web-site](#).



National Youth Summit on

Healthy Living:

February 13-16, 2020

At the National Youth Summit on Healthy Living, high school students develop the knowledge and skills to address today's issues including nutrition education, physical fitness, wellness, and emotional well-being.

National 4-H Council and National 4-H Conference Center have partnered with professionals in family consumer science and healthy living to host the National Youth Summit on Healthy Living. Students are trained to create action plans to implement in their communities and teach other youth about what they have learned. The structure of the summits maximizes the amount of hands-on learning experiences and translates that learning to direct outcomes. This Summit is open to any high school student in grades 9-12 as of September 2019. Delaware 4-H members must complete an application to be considered to attend the conference.

This application is due to the State 4-H Office by December 15, 2019

Junior Leader Retreat

Open to all Kent County 4-H Teens (13-19)

January 17,18, and 19,2020

Cost: \$40

Cape Henlopen State Park

For more information contact

Jenny Trunfio at jtrunfio@udel.edu

Register Online [HERE](#)

The Delaware Pork Producers Association will be holding their annual dinner and banquet on **Saturday, February 8th** at the Felton Fire Hall. Dinner will be served family style beginning at 6:30pm. The menu will consist of Felton's famous fried oysters, pork roast, mashed potatoes and gravy, dumplings, green beans, dessert and beverages. Tickets are \$25 for adults, \$12.50 for children ages 6-12 and free for children 5 and under. Please call Karen Tigner at (302)632-4250 for more information or to purchase dinner tickets. The Delaware Pork Producers Association has graciously provided support to Delaware 4-H Livestock programs for many years.

National Youth Summit on

Photography:

February 26– March 1, 2020

The National Youth Photography Summit brings high school students together to engage in a timeless artform in a setting filled with historical architecture, beautiful landscapes, and more. The National Youth Photography Summit will take place February 26 – March 1, 2020. Summit fees include accommodations at the National 4-H Conference Center, meals, educational programming, and tours including a guided night time tour of the monuments and memorials in Washington, DC. Buffet style meals are served in the Clover Dining Room at National 4-H Conference Center. This Summit is open to any high school student in grades 9-12 as of September 2019. Delaware 4-H members must complete an application to be considered to attend this conference. **This application is due to Doug Crouse by December 15, 2019**

The University of Delaware does not discriminate against any person on the basis of race, color, national origin, sex, gender identity or expression, sexual orientation, genetic information, marital status, disability, religion, age, veteran status or any other characteristic protected by applicable law in its employment, educational programs and activities, admissions policies, and scholarship and loan programs as required by Title IX of the Educational Amendments of 1972, the Americans with Disabilities Act of 1990, Section 504 of the Rehabilitation Act of 1973, Title VII of the Civil Rights Act of 1964, and other applicable statutes and University policies. The University of Delaware also prohibits unlawful harassment including sexual harassment and sexual violence.



Kent and New Castle County

4-H Junior Leader Retreat

When: January 17-19

- ◇ Arrival: 6 to 6:30 p.m.
- ◇ Departure: 10:45 a.m.

Cost: \$40

Location: Cape Henlopen Officers'
Club Youth Camp

Register by: January 8, 2020

Kent: bit.ly/2020JrLeaderRetreat

NCC: bit.ly/2020JrLeaderWeekend



CLUB NEWS

EXTRA! EXTRA!

READ ALL ABOUT IT!

Westville

Reporter: Caroline Allen

This month our club has been kept very busy! From making ornaments and decorating our Trim-a-Tree to preparing our "Candyland-themed Christmas" float for the Harrington Christmas parade, our club has been meeting every weekend to work on our projects. We are looking forward to our approaching luau-themed club banquet and the holiday season!

Younger Member Camp-Out

Participants:

Be on the look out for our survey. Once completed, please return as soon as possible



Weston Williams of Felton took this photo on Sept. 30 in Downtown Dover. To contribute your scenic photos of our area, email newsroom@newszap.com. Photos must be at least 200 dpi and include your name, where and when your photo was taken, where you live and your phone number. To see more Scenic Delaware photos, visit the Scenic Delaware section at DelawareStateNews.net.

Congratulations !

Weston Williams of Harrington Sunshine 4-H Club for getting his photograph chosen by the Delaware State News to be published.



Lida Gannon's puppy, Poppy, noticed the sunset when they were out walking on Oct. 16 at their farm outside of Harrington. To contribute your scenic photos of our area, email newsroom@newszap.com. Photos must be at least 200 dpi and include your name, where and when your photo was taken, where you live and your phone number. To see more Scenic Delaware photos, visit the Scenic Delaware section at DelawareStateNews.net.

Congratulations !

Lida Gannon of Peach Blossom 4-H Club for getting her photograph chosen by the Delaware State News to be published.



MyPI

Preparedness Initiative

We are currently looking for volunteers to participate in a program to help educate teens about the importance of emergency preparedness. Please contact Kristin Cook at Kristin@udel.edu or 730-4000 for more information.

An informational/training session will be held mid-December.

Inclement Weather Cancellations

If events are cancelled due to bad weather, we will attempt to take the following steps:

- We will post the cancellation on our Delaware 4-H Facebook page.
- We will email all Organizational Leaders if the cancellation is decided during regular working hours.
- We will post our cancellation on WDOV and WBOC.
- We will phone people, if we know who is attending.
- We will place a sign on the outside doors.

Please also note if our building is delayed in opening or closing, we follow the Del Tech Terry Campus, Dover schedule.



Inclement Weather Policy

CLUB NEWS EXTRA! EXTRA! READ ALL ABOUT IT!



Club News due by December 18th
for the January Newsletter.

Please submit all news to
Caroline Del Vecchio at cadv@udel.edu.

Harrington Sunshine 4-H Club

Carmen Blanchette- Reporter

Our last meeting we had 39 members attend. We made Manna bags with socks, gloves, hand sanitizer, snacks, wipes, tooth brushes and more. Our member of the month was Jamie Rowland. We went to the Milford Place to play our monthly visit where we help make a craft and play picture bingo. Several members went to the Milford Food Bank on Veterans Day. We looked through our project books and checked a few things that we have done as club projects. The club is working on our float for the Harrington Christmas Parade. We would like to wish everyone a Merry Christmas and Happy New Year!

Manna Bags



CLUB NEWS

EXTRA! EXTRA!

READ ALL ABOUT IT!



Ponies and Pintails

Rylee Ridgely

At our last meeting we had over 3/4 of our membership present which was held on November 5th. All Reports were read. Our club is new which means we have a lot of new members, As officers we wanted to make all new members feel welcomed so after the start of the meeting we took time to go around the room and have everyone state their name, age, years in 4-H and something they enjoy doing. During the meeting we went over the agenda, discussed questions new members had and went over past and upcoming events. As part of our discussion we talked about how well our window display and litter barrel did and brainstormed ideas for our Christmas tree. Also, at this meeting the Ridgely family brought thanksgiving themed snacks. After the special treat we had Mr. Williams go over the dates for our 4-H basic rifle training. A lot of our members are interested in this, so we may have a 4-H shooting team in our future! To close our meeting, we moved the members down to the basement and played Ag charades to help our members become more then just members but friends.

Peach Blossom

Mason Hay

Peach Blossom has had a great month of November!! We had a great day of crafting with making ornaments for our trim-a-tree! We have had many more project meetings from archery, to photography, livestock and clothing! Our monthly meeting theme was Jersey and focus on stress awareness. We also welcomed a guest speaker from Sussex County Paramedics and previous 4-H Member Micaela Harvey, the kids loved interacting with her and then her cool paramedic truck! WE also collected items for our college students and National Guard care packages! This month we also had our Peach Blossom family night where we had a small live and silent auction and our members were recognized for their accomplishments throughout the year! We finished off the month with ring the bell at the Milford Redners for Salvation Army. We are looking forward to the holiday season and the many events coming up in December with our 4-H Friends and family.



Picture is all the members who came to our family night on November

Submitted by Reporter Mason Hay



Westville 4-H Club

Westville 4-H Club is a Traditional Club that has been around since 1929. We have cloverbuds that range in age from 5 years old to 7 years old and traditional members from 8 years old to 19 years old. Westville meets the first Monday of the month. We start at 6:00 pm with a craft then go into our club meeting at 6:30 pm. Westville members are involved in many project areas such

as Public Speaking, Favorite Foods, Woodworking, Livestock judging, Photography, Archery and the Market Animal projects. Through the year we participate in the Window Display, Litter Barrel, and the Trim-A-Tree contest. At Christmas time we enter a float in the Harrington Christmas parade and we also participate in the Salvation Army Bell Ringing. We also collect school supplies to donate to a school, pet food and supplies to donate to the SPCA and canned food for the food bank and the DART stuff the bus campaign. At Fair time you can find many members in the Delaware Farm Bureau Food Booth, the 4-H building, the animal barns taking care of project animals and riding the 4-H float



in the nightly parade. Our members very active not only in the club but also the community. The club also does a road clean-up once a year and also participates in the coastal clean-up to help clean Delaware beaches. For more information email leader Shana Galloway at sgallowayf@aol.com.



Kent County 4-H Sponsor Book



Sponsor Contact Name _____

Email Address _____ Phone Number _____

Name of Business (if applicable) _____

Sold By _____ Club _____

Sponsor Information: You may draw advertisement on the back of this paper.

Advertisement Image: ☐ Business will Email Company Logo (preferred)
☐ Use Previous Year Image/Message
☐ Other _____

Patron Name to be Listed (if applicable) _____

Text to Include (if any): _____

Ad Size: _____

Amount Paid: _____

Description	Ad Size	Ad Price B/W	Ad Price Color
Back Cover — SOLD	7 1/2" x 4 1/2"	\$200.00	\$250.00
Inside Front or Inside Back Cover	7 1/2" x 4 1/2"	\$150.00	\$200.00
Centerfold (2 pages) — SOLD	7 1/2" x 10"	\$250.00	\$300.00
Centerfold Left Full Page	7 1/2" x 4 1/2"	\$120.00	\$150.00
Centerfold Right Full Page	7 1/2" x 4 1/2"	\$120.00	\$150.00
Full Page Ad	7 1/2" x 4 1/2"	\$ 60.00	\$85.00
One Half (1/2) Page Ad	3 1/2" x 4 1/2"	\$ 30.00	\$50.00
One Third (1/3) Page Ad	2 1/2" x 4 1/2"	\$ 20.00	\$40.00
Listed as a Patron	No Ad	\$5.00-\$19.99	XXX

Sponsorship Deadline December 6, 2019

Tear Bottom Portion for Customer

January 2020 – December 2020 Kent County 4-H Sponsor

Name of Business or Person _____

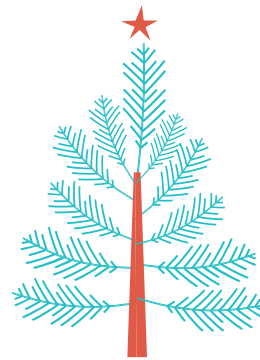
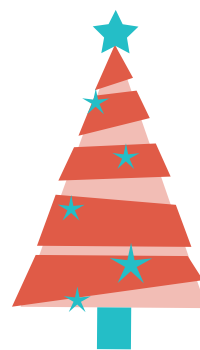
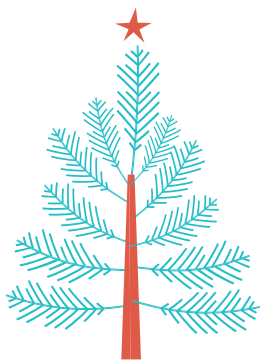
Size of Ad _____ Amount Donated _____

Sold by _____ Club _____

Please send advertisement logo via email to HeatherCrouse@comcast.net

No goods or services were exchanged for this donation.
Tax ID# 45-5577151

Thank You!



DELAWARE 4-H PRESENTS:

STATEWIDE 4-H SKATING PARTY

Join 4-H'ers from across Delaware at this annual event!

FRIDAY, DECEMBER 27, 2019

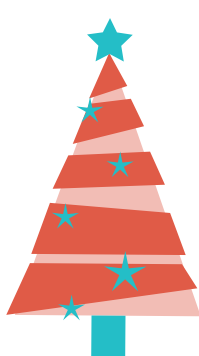
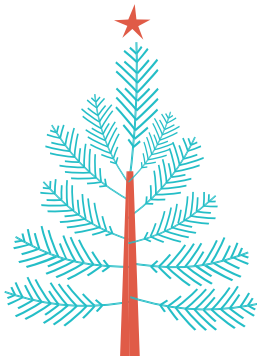
6:15 PM TO 7:45 PM

DELAWARE STATE FAIR - THE CENTRE ICE RINK

\$4.00 entry with a can/box food donation (includes skating and skate rental)

\$5.00 entry without donation

\$4.00 per Bumper Car Ride



December 2, 2019

Dear Delaware 4-H Teen:

Delaware 4-H
State Teen Council
2019-2020 Officers



Jenna Anger
President

Maci Carter
Vice President

Rachel Taylor
Secretary

Kyle Morris
Social Media Coordinator

County Representatives:

Riley Taylor
Kent

Cole Simpson
New Castle

Jacob Maske
Sussex

A committee made up of your Delaware 4-H State Teen Council officers has been busy diligently working on the upcoming State Teen Conference. The officer team has designed a fun-filled weekend, and you are invited. Join other 4-H members from throughout the state for a meaningful weekend at the 2020 Delaware 4-H State Teen Conference, **"Saddle up with 4-H!"**

The conference will be held Saturday, February 8, through Sunday, February 9, 2020. Accommodations are being provided by the UD Courtyard Marriott Hotel in Newark. The total cost to attend conference is \$100; however, many 4-H members will qualify for a 50 percent discount through your county Junior Council and Leaders Associations. These organizations have graciously agreed to offer these funds again this year to support this program, provided youth meet the minimum requirements of participation. Prior to registering, please contact your county office to confirm if you received the 50 percent discount. Included in the registration fee is lodging, three meals, a ticket to the UD ice hockey game, educational workshops, and a visit to the recreation center and pool at the Carpenter Sports Building. Participants are also invited to a western-themed dance and snack party on Saturday evening following the ice hockey game.

For weather and safety issues, all Sussex and Kent County attendees are required to ride the bus to the event. Pick up and drop off locations will be at the Kent and Sussex County Extension offices. Four members of the Delaware 4-H staff will chaperone this event.

Registration will only be accepted online beginning in mid-December. Credit card payments will be accepted online, or you may choose to send a check for the appropriate amount made payable to "University of Delaware". All attendees must be enrolled in 4-H Online for the 2019-2020 program year and have a valid health form on file. The final day to register for the conference is Friday, January 24, 2020.

Additional details, including the schedule and registration information, will be posted to the Delaware 4-H webpage. If you have any questions or concerns, please feel free to call me directly at (302) 831-2997. I hope that you are able to join us on February 8 and 9 for this wonderful opportunity to learn with your Delaware 4-H family.

Yours in 4-H,



C. Douglas Crouse
State 4-H Program Leader



2020 Delaware 4-H State Teen Conference

February 8 and 9, 2020

Courtyard Marriott Newark, DE

Join the Delaware 4-H State Teen Council and embark on a weekend-long, Wild West experience!



4-H members ages 13 and above are welcome to attend!

Activities include:

- ♦ Engaging team-building and leadership workshops
- ♦ UD Ice Hockey Game
- ♦ Catered Meals
- ♦ Overnight lodging at the Courtyard Marriott in Newark
- ♦ Dance and Snack Party—Feel free to wear comfortable clothes. Western-themed costumes are encouraged! (abide by 4-H dress code)

Online Registration will open in mid-December

Contact: Jill Jackson at 302-856-7303 or Kaleb Scott at 302-730-4000

Registration deadline: January 24, 2020

2020 Delaware 4-H State Teen Conference Schedule

Saturday, February 8

8:00 a.m.	Bus departs Carvel Research & Education Center, Georgetown
9:00 a.m.	Bus departs Kent County Extension Office, Dover
10:00 a.m.	Bus arrives at Townsend Hall, University of Delaware, Newark
10:15-10:45 a.m.	Welcome and icebreakers by State Teen Council Officers
10:45-11:00 a.m.	Break
11:00-11:45 p.m.	Session 1
11:45-12:45	Lunch
12:45-1:30 p.m.	Session 2
1:30-1:35 p.m.	Break
1:35-2:20 p.m.	Session 3
2:20-2:25 p.m.	Break
2:25-3:10 p.m.	Session 3
3:10-3:15 p.m.	Break
3:15-4:15 p.m.	Session 4
4:15 p.m.	Room key distribution, Townsend Hall Commons
4:30 p.m.	Depart for Marriott Hotel
4:45 p.m.	Room Check-in
5:45 p.m.	Meet in hotel lobby to depart for dinner
5:40-5:55 p.m.	Travel to Dinner Location
6:00-7:30 p.m.	Dinner
7:30-7:45 p.m.	Depart for Ice Rink
8:00 p.m.	UD vs. University of Maryland Ice Hockey Game
9:30 p.m.	Depart game for Townsend Hall Commons
9:45-11:15 p.m.	Western themed dance & snacks
11:15 p.m.	Depart for Marriott Hotel
12:00 a.m.	Lights Out!



Sunday, February 9

7:30 a.m.	Wake Up – Pack up and Check Out of rooms
8:15 a.m.	Depart for Townsend Hall
8:30 – 9:30 a.m.	Breakfast
9:45 a.m.	Depart for Little Bob Sports Center – Luggage on bus
10:00 a.m.-12:00 p.m.	Little Bob Sports Center
12:15 p.m.	Depart for Townsend Hall
12:30-1:00 p.m.	Lunch
1:00-1:45 p.m.	Self Defense Workshop
1:45-1:50 p.m.	Evaluation
2:00 p.m.	Bus departs from Townsend Hall
3:00 p.m.	Bus arrives at Kent County Extension Office, Dover
4:00 p.m.	Bus arrives at Carvel Research & Education Center, Georgetown



THIS YEAR,
JOIN CLUBS
AROUND THE
STATE
AND TAKE ON THE
4TH H FOR
HEALTH
CHALLENGE!



WOW!!!! Look at the thirty-five Delaware 4-H Clubs and Afterschool Groups that have registered for the 2019-2020 4th H for Health Challenge. They received fifty bonus points for pre-registering and have made the commitment to practice Healthy Habits!

Clover Knights
Cozy Critters Afterschool
Create2Learn&2Lead
Cypress Heart and Hands
Delaware Military
Dover Clovers
Dublin Hill
Eisenberg Cloverbuds
Harbor Lights
Harrington Sunshine
Heavenly Hooves
Hollymount
Houston Cardinals
Kirk Afterschool
Knollwood Afterschool
Lord Baltimore
Lower Delaware Archers
Lucky Leaf

Meado-Larks
Midstate
Milford
New Horizons
Peach Blossom
Ponies and Pintails
Pony Pals
Porter Gang
Rossakatum
Seaford Blue Jays
St. Ann's
Stump Corner
Summit Bridge
Sunset Branch
Tails n Trails
Westville
Woodside Emeralds

Contact Betsy Morris (Healthy Living Mission Mandate Coordinator) at betsym@udel.edu or 302-831-8965 to register your club or for more information.

January 2020

2– Level 6 Diamond Clover Committee Meeting		Kent County Office
3– Public Speaking Entries Due		
12–Public Speaking Contest (Snow date 1/26)	1:00PM/2:00 PM	Kent County Levy Court Building
15– State Camp Scholarship Applications Due		
20– Martin Luther King Day—Kent County Office Closed		
21– Leaders Meeting	7:00 PM	Kent County Office
21– Junior Council Meeting	7:00 PM	Kent County Office
21– 4-H Exchange Meeting	6:00 PM	Kent County Office
23– Favorite Foods Contest Training	6:30 PM	Kent County Office
24– Club News Due		
28– Shooting Sports Instructor Spring Meeting	7:00 PM	Kent County Office
TBD– State Teen Conference Registration Due		

February 2020

1– State Leader Forum	8:30 AM	TBD
3– Honey Bee Essay Due to the State 4-H Office		
3– Livestock Overnighter Registration DUE		
3– 2nd Payment Delaware Junior Dairy Futurity Due		Charmayne Busker
6– Favorite Foods Contest Entries Due by Close of Business 4:30 PM—No Late Entries will be accepted		
8-9– State Teen Conference		Newark DE
10– Kent County Photography Contest Entries Due		
13– Woodworking/Photography Judging Contest	4:00-7:00 PM	Kent County Office
14– State Horse Bowl Entries DUE to the State 4-H Office		Newark, DE
15-16– Livestock Overnighter	9:00 AM	Delaware State Fair
18– Leaders Meeting	7:00 PM	Kent County Office
18– Junior Council Meeting	7:00 PM	Kent County Office
18– 4-H Exchange Meeting	6:00 PM	Kent County Office
18– State 4-H Horse Advisory Meeting	7:00 PM	Kent County Office
21-23– Junior Council Retreat	6:00 PM	
21– Club News Due for the March Newsletter		
24– Day Camp Counselor Applications Due		



WE'VE GOT 10,000 REASONS WHY YOU SHOULD STUDY AGRICULTURE

As part of Farm Credit's centennial celebration, the Farm Credit Foundation for Agricultural Advancement is kicking off a new scholarship program. We'll be awarding 10 scholarships worth \$10,000 each to students planning to pursue a career in agriculture.

Yes, you read that correctly – a total of \$100,000 in scholarships will go directly to local students!

The Farm Credit Foundation for Agricultural Advancement is offering scholarships to high school seniors or those currently enrolled in a two or four year higher education program, with plans to pursue a career in agriculture. This doesn't have to mean you're planning to be a farmer – this also includes food scientists, veterinarians, ag teachers, or maybe even a Farm Credit loan officer!

Our 2020 scholarship application will be available online from September 27, 2019 - January 10, 2020.

***The application for this scholarship program will only be available online. [HERE](#)**



Scribbles from: Susan Garey, Extension Educator, Animal Science

Delaware 4-H Horse Bowl

The Delaware 4-H Horse Bowl will be held on March 14, 2020 at Lake Forest North Elementary. Divisions are available for Ages 8-10, 11-13, and 14-19 as of January 1 of the 2020 4-H year.

Questions may come from:

4-H Horse Manuals(blue cover 2015 version):

“Giddy Up and Go”, “Head, Heart and Hooves”, “Stable Relationships”, “Riding the Range,” “Jumping to New Heights,” “Horse Project Helper’s Guide.,” and 4-H Horse curriculum corrections found on-line at www.n4hccs.org.

In addition to the 4-H Horse Project manuals:

Age 8-10: Horse Care for Kids, by Cherry Hill

Age 11-13: Your Horse, a step-by-step guide to horse ownership, by Judy Chapple (and age 8-10 material).

Horses and Horsemanship – by Ray Antoniewicz, National 4-H Council-

Age 14 and older: Storey’s Horse-Lover’s Encyclopedia, edited by Deborah Burns (and age 8-10 and 11-13 material).

Horse Science- by Ray Antoniewicz, National 4-H Council

Complete contest rules and guidelines will be posted on the State 4-H Animal Science page. A copy of the entry form is included in this blog. The 2020 Horse Bowl entry deadline is February 14, 2020.





Scribbles from: Susan Garey, Extension Educator, Animal Science

Delaware 4-H Animal Science Calendar for 2019-2020

The calendar of statewide animal science related events and deadlines is available on the State 4-H Animal Science webpage. Tagging dates, camps, trainings, contests and more are listed. To download your copy please visit:

<https://www.udel.edu/content/dam/udelImages/canr/pdfs/extension/4H/animal-science/2019-2020-Delaware-4-H-ANSCO-calendar-Susan-Garey.pdf>

For a listing of equine events only:

<https://www.udel.edu/content/dam/udelImages/canr/pdfs/extension/4H/animal-science/2019-2020-Delaware-4-H-Equine-Events-Calendar-Susan-Garey.pdf>



Delaware Equine Council Scholarship- \$1500

Eligibility:

- Must be a U.S. citizen and a Delaware resident or Delaware Equine Council member. (\$10.00 to become an individual member)
- Must be enrolled and in good standing in an agriculture, equine, veterinary or vet tech program in the United States.
- Must submit a typewritten 400-word essay :

"How I plan to use this course of study to further the equine or agriculture industry."

- Must complete a typed application and include a transcript of a minimum of one full semester's grades from an accredited college or university.

All awards are given without discrimination as to race, sex, or creed.

Application postmark deadline is January 31, 2020. Winners will be notified in February and awarded at the scholarship dinner on the evening of March 14, 2020 at the Harrington Moose Lodge. To download the application or for more details please visit:

<https://delawareequinecouncil.org/scholarships.php>



Scribbles from: Susan Garey, Extension Educator, Animal Science

Delaware Ag Week

Delaware Ag Week programs, along with an agricultural trade show and exhibits by the First State Antique Tractor Club, are being held January 13-16, 2020 at the Delaware State Fairgrounds in Harrington, Delaware. Sessions focused on beef cattle production, small ruminants and hay and pasture are among the events being held. For the complete schedule of events and individual session schedules please visit <http://sites.udel.edu/delawareagweek/>

Delaware Ag Week Seminar for Beef Cattle Producers

January 13, 2020- 6:00-9:00 pm

Exhibit Hall Board Room

6:00 p.m.—6:30 p.m. *“The Basics of Beef Quality Assurance on Your Farm”* Courtney Gray, Pennsylvania Beef Council

6:30 p.m. *DINNER- Burger Bar- Sponsored by the Delaware Beef Advisory Board*

7:00 p.m.—8:15 p.m. *“Understanding the Importance of Beef Quality Assurance for Producers and Consumers”*

Chase DeCoite, NCBA, Director—Beef Quality Assurance

8:15 p.m.—8:45 p.m. *“Animal Disease Traceability”* Dr. Karen Lopez, Delaware Deputy State Veterinarian, Delaware Department of Agriculture

Please RSVP by January 4 to [Dan Severson](#) or call (302) 831-2506 if you plan on attending so we can make the necessary arrangements for food and materials.

Small Ruminant Program

January 14, 2020- 6:00-9:00 pm

Exhibit Hall Board Room

6:00 p.m.—6:30 p.m. *“Past and Future Plans of the Small Ruminant Program”* Delaware Small Ruminant Team (Dr. Kwame Matthews, Daniel Severson and Susan Garey)

6:30 p.m. *DINNER Sponsored by Steve Breeding, Shepherd’s Hope Farm*

7:00 p.m.—7:30 p.m. *“Animal Disease Traceability in Small Ruminants”* Dr. Karen Lopez, Delaware Deputy State Veterinarian, Delaware Department of Agriculture

7:30 p.m.—9:00 p.m. *“Animal Husbandry, Regulation and Marketing of Sheep Dairy and Cheese Production”* Michael and Colleen Histon, Shepherds Manor Creamery

9:00 p.m. QUESTIONS/ADJOURN

Please RSVP by January 3, 2020 to Dr. Kwame Matthews at kmatthews@desu.edu or 302-857-6540 if you plan to attend so we can plan accordingly for meals, materials and accommodating any special needs.

Session Summary: DE Pesticide Certification Credits: 0 MD Pesticide Certification Credits: 0

DE Nutrient Management Credits: 0 MD Nutrient Management Credits: 0

Certified Crop Advisor Credits: 0



Scribbles from: Susan Garey, Extension Educator, Animal Science

Delaware Ag Week cont.

**Delmarva Pasture and Hay Conference
MD/DE Forage Council
Commodities Building
January 14, 2020**

9:00 a.m. – 9:15 a.m.- Welcome and Housekeeping Details- Dan Severson, University of Delaware Extension Agriculture Agent

9:15 a.m.—10:00 a.m. “Weed Control and What Are We Missing?” Dr. Mark VanGessel, Extension Weed Science Specialist and Quintin Johnson, Extension Weed Science Associate, University of Delaware

10:00 a.m.—10:45 a.m. “Soil Health in Grazing Systems” Brian Campbell, Grazing Specialist, USDA Natural Resources Conservation Service

10:45 a.m. Break/visit with Exhibitors

11:00 a.m.—11:45 a.m. “Making the Most of Adaptive Grazing in Building a Productive Pasture-Based Livestock System” Matt Poore, Animal Science Department Extension Leader and Ruminant Nutrition Specialist, North Carolina State University

11:45 a.m.—12:00 p.m. “Words from the Maryland-Delaware Forage Council” Dr. Jarrod Miller, President, MD/DE Forage Council, and Extension Agronomy Specialist, University of Delaware

12:00 p.m. LUNCH IN DOVER BUILDING

Session Summary: DE Pesticide Certification Credits: 1.0 MD Pesticide Certification Credits: 2.0

DE Nutrient Management Credits: 1.5 MD Nutrient Management Credits: 2.0

Certified Crop Advisor Credits: PM: 0.5, SW: 0.5 CM: 0.5

1:00 p.m.—2:00 p.m. “Building a Balanced and Resilient Forage System Using Perennials and Annuals”

Matt Poore, Animal Science Department Extension Leader and Ruminant Nutrition Specialist, North Carolina State University

2:00 p.m.—3:00 p.m. “Putting the Punch Back in Your Pastures With Pasture Renovation”

Amanda Grev, Pasture Management Extension Specialist, University of Maryland

3:00 p.m. ADJOURN

Session Summary: DE Pesticide Certification Credits: 1.0 MD Pesticide Certification Credits: 0

DE Nutrient Management Credits: 2.0 MD Nutrient Management Credits: 2.0

Certified Crop Advisor Credits: CM:2.0

Delaware 4-H Camp Scholarship Application Form 2020

DUE to Kent County 4-H Office by Jan 15, 2020 *

Name: _____ Club: _____

Address: _____ Years in 4-H: _____

City: _____ Phone: _____ Age: _____ as of 1/01/2020

4-H Involvement

Number of years 4-H'er has attended State or Environmental Camp: _____

What roles have you played in your club? What project areas do you work in?

What are some 4-H activities you have attended or participated in? What community service have you recently completed?

Which Camp are you planning to attend? (Check one) _____ Environmental Camp _____ State Camp

If 4-H'er receives scholarship and does not use it, the 4-H Office must be notified by June 1st, otherwise future scholarship will not be offered.

Family Information

Number of members in household: _____

Parents' employment status:

Mother: _____ Father: _____

In what ways would scholarship/financial aid be helpful (explain need). _____

Leader's Comments

Please include specific comments about 4-H'er involvement in club.

(If you need more space, attach a separate sheet)

By signing this form, leader certifies that 4-H involvement is accurate.

Leader's Signature

4-H Member's Signature

***Late forms may decrease funding availability**



Delaware 4-H Horse Bowl Contest

Saturday, March 14, 2020

9:00 a.m.

**Lake Forest North Elementary School
Felton, Delaware**

If you have special needs that need to be accommodated, please contact the office two weeks prior to the event

General Rules, Regulations and Entry

1. Selection of Teams, Contestants, and Eligibility

- A. Any club or organization may enter a team, which may consist of two (2) to four (4) members each.
- B. All contestants must have passed their 8th birthday and must not have passed their 19th birthday as of January 1st of the current year.
- C. Contestants may not have participated in a previous National Horse Bowl Contest as an official member or alternate.
- D. The club and/or organizational leader must certify contestant and team entry and eligibility.
- E. Contestants must be entered in the appropriate age division (as of 1/1/20): **8-10, 11-13, 14-19**. Any team whose members come from two age groups must compete in the older group.
- F. At the discretion of the Delaware 4-H Horse Advisory Committee, teams may be combined if only a single member of a team shows up the day of the contest.
- G. Individual responses from Senior contestants (14-19) will be tracked by a 4-H Horse Advisory Committee member to identify top senior members to potentially participate in an out-of-state Horse Bowl type event.

2. Questions may be from:

- **4-H Horse Manuals (blue cover 2015 version):**

"Giddy Up and Go", "Head, Heart and Hooves", "Stable Relationships", "Riding the Range," "Jumping to New Heights," "Horse Project Helper's Guide.," and 4-H Horse curriculum corrections found on-line at www.n4hccs.org. 2015 version 4-H Horse Manuals

(References continued next page)

Cooperative Extension Education in Agriculture and Home Economics, University of Delaware, Delaware State University and the United States Department of Agriculture cooperating. Distributed in furtherance of Acts of Congress of May 8 and June 30, 1914. It is the policy of the Delaware Cooperative Extension System that no person shall be subjected to discrimination on the grounds of race, color, sex, disability, age, or national origin

- **In addition to the 4-H Horse Project manuals:**

Age 8-10: Horse Care for Kids, by Cherry Hill
Age 11-13: Your Horse, a step-by-step guide to horse ownership, by Judy Chapple (and age 8-10 material).
Horses and Horsemanship – by Ray Antoniewicz, National 4-H Council
Age 14 and older: Storey's Horse-Lover's Encyclopedia, edited by Deborah Burns (and age 8-10 and 11-13 material).
Horse Science- by Ray Antoniewicz, National 4-H Council

Questions will be comprised from the following three categories:

- **Regular** questions (worth 1 point each) to which any member of either team may respond.
- **Toss-up** questions (worth 1 point each) to which any member of either team may respond. [The only difference between a regular and a toss-up question would be that toss-up questions would have a bonus question attached to each and, in general, would be somewhat more difficult than the regular questions.]
- **Bonus** questions (worth a pre-determined 1-3 points); all parts of the bonus question must be answered before any points will be awarded. No part of the bonus question will be repeated, nor will any additional information be given to the contestants relative to the questions. Any member of the team winning the toss-up may provide answers to bonus questions.

This will be conducted as a double elimination event. Answers to any questions, which are shown to be in conflict between references, will be discarded. The decision of the judge as to the acceptability of any answer will be final.

3. Entries

Entries, including entry fee, must be postmarked by **February 14, 2020**.

An entry fee of \$15 for each team must accompany the entry form. Checks are to be made payable to "Delaware 4-H Horse Advisory Committee".

Teams will be registered on an "as received" basis. We reserve the right to limit the numbers of teams per division. Incomplete entries, or entries not accompanied by the registration fee, will not be registered.

Teams must be preregistered in order to compete in the 4-H Horse Bowl. Day of contest entries will not be accepted. If you have registered for the Horse Bowl you will receive written confirmation in return.

4. Awards to the top teams

In each age category: 1st Prize \$35 2nd Prize \$20 3rd Prize \$15

For additional information, contact the Susan Garey at (302)730-4000 or truehart@udel.edu

5. Rules

A. Cell Phone Use and Recording of Questions

1. Young people participating in the contest may not use a cell phone while they are in the competition. This includes the time spent in the holding area as well as in the hallway between the contest room and the holding area. Because we continue to have ongoing issues with cell phone use in the holding area and deliberate ignoring of this rule, we will now be collecting all cell phones to be held in a basket at the front of the holding area. If a child needs to contact a parent, they can do so in the presence of a room monitor. Once a participant has been eliminated from competition, they may use their cell phone. Violation of this cell phone policy will result in disqualification from the contest

2. Spectators may not use cell phones in contest rooms and must have them turned off.

3. No recording of questions by any means (audio, video, written etc.) is permitted. Violation of this policy by anyone in attendance may result in the individual being dismissed from the competition room for the remainder of the event and/or disqualification of the teams they are affiliated with, from the contest. This is in accordance with the spirit of the competition not to teach to the question or have youth simply memorizing answers.

B. Reading and Answering the Questions

1. The moderator will read all questions and identify the type of question. Ten seconds will be allowed for starting a response. If an answer is not given or wrong, the moderator will read the next question. If the answer given is the same as or means the same as the expected answer, it will be accepted. If the answer is different than the expected answer, it will be referred to the judge for a decision.

2. Once a contestant activates a buzzer, they must be acknowledged before they can answer the question. After they have been acknowledged, the contestant has ten seconds to start a valid answer. First answers will be considered valid answers.

3. An acknowledgement penalty of one point will be deducted from the contestant's and their team's score if they answer a question before being acknowledged.

4. If a question is interrupted during the reading of it, the moderator will stop reading as soon as a buzzer is activated. The contestant has ten seconds after being acknowledged, to begin their answer. If the answer given is correct for the way the question was written, it will be accepted. If the answer given is correct for only the portion of the question heard, but wrong for the way the question is written, the answer will not be accepted. If the question was interrupted, the judges will not be allowed to ask for any type of clarification of the answer given.

5. The judge will be allowed to verify an answer, or the validity of a question. If verification cannot be made, the question will be replaced. The judge has the final say. Disruptive and/or disrespectful behavior by parents or coaches will not be tolerated. If a coach or parent continues to argue after an official ruling has been given, the coach or parent will be dismissed from the competition room for the remainder of the event and/or the team may be disqualified.

6. The first answer given by a contestant will be the answer accepted by the judge.

C. Double Elimination

1. Teams - Each team will play in a pre-numbered position, according to the position number drawn by the team captain or event official.

2. A total of two losses will automatically eliminate a team from the competition.

D. Individual Scores - Scores will be kept for each senior individual contestant, with the high 5 individual contestants receiving special recognition.

E. Time Outs - The team captain, coach or any staff member may call for a "time out" for clarification of a rule, score, to seat an alternate, or to allow for any unexpected problem. "Time-outs" may be called only after a question has been answered and before the next question starts.

F. Holding Area - All teams, alternates, and coaches must remain in the designated holding area until it is their turn to play.

1. After their round match is played, they must go to an appropriate designated area, until the conclusion of the round in progress.

2. After the round is completed, all teams/alternates and coaches (not eliminated from the contest) must return to the designated holding area to await the next match.

3. All coaches in the holding area are responsible for supervision of the teams. These rules are a matter of ethics and require the cooperation of all team members and coaches.

G. Contest Procedures

1. Teams are assembled and seated at their respective panels, with the designated team captain seated in the #1 chair, nearest the middle. Each contestant will be given the opportunity to check the equipment.

2. The designated set of questions for each round will be opened by the moderator and verified with the judge/referee before starting the game. Prior to reading a question, the moderator will announce the number and type of question. Each succeeding question, will be read in this manner, until all the questions for that match are read. The correct answer will be given for all unanswered or wrong answers during the final use of that round of questions.

3. Contestants, who respond to a question, will receive the appropriate points applied to a particular question.

4. If the time (ten (10) seconds) in which to answer a question lapses without a contestant activating the buzzer, there shall be no loss or awarding of points to either team. In this case, after the response time has elapsed, the next question will be read.

5. If the buzzer is activated and an answer is not started within the 10 second allowable time, the question will be offered to the opposing team for a response. Should the second team not respond or respond incorrectly, the next question will be read.

H. Time Allowed for –

- | | |
|--|------------|
| • To start a response to a question | 10 seconds |
| • To start answer after acknowledgement | 10 seconds |
| • For team to confer on a bonus question | 60 seconds |

I. Information Sources - No source of information is infallible. At times there may be answers given that are in agreement with the recommended reference books, which in fact are erroneous or out of date. Every effort is made to eliminate such questions, however, in the event one slips in, the judges may agree to:

1. To accept the answer and give an explanation of the correct or up-dated information, for future use of the question.
2. To accept only the correct answer.
3. Replace the question to the appropriate contestants.
4. The judge's ruling is final.

(entry form follows this page)

Delaware 4-H Horse Bowl Entry Form

Postmarked by February 14, 2020 to:

Delaware 4-H Horse Bowl
State 4-H Office
113 Townsend Hall
531 S. College Avenue
Newark, DE 19716-2210

An entry fee of \$15 for each team must accompany the entry form.

Checks are to be made payable to **"Delaware 4-H Horse Advisory Committee"**.

Age Category (circle one):

8-10

11-13

14 and older

<i>Team Name</i>	<i>County</i>	<i>State</i>

<i>Team Members Names</i>	<i>Dates of Birth</i>

<i>Coach/Leader Name</i>	<i>Complete Address Including Email</i>	<i>Phone</i>

Please list each team on a separate sheet. Please designate one coach to remain with the team in the holding area during competitions. Coach passes will be distributed the morning of the contest and are non-transferrable.



YEAR-ROUND GIFT IDEAS

Savvy shoppers know that they can impact more children around the world for eternity by looking for shoebox items throughout the year. Check out our packing guide for the suggested item of the month. You can use this guide to help put together shoebox gifts that are sure to bless and delight boys and girls. #OCCitemofthemonth



Hats, Gloves & Scarves

January



Accessories

February



Quality Crafts

March



Stuffed Animals

April



Hygiene Items

May



Toys

June



Clothing Items

July



School Supplies

August



Games

September

Please send in any other donations from your club or group.



October

Statewide Boxing Party and Operation Christmas Child Field Trip

DATES TBA



November

Begin making plans for 2021!

December

Operation Christmas Child® is a project of Samaritan's Purse®, Franklin Graham, President.
1-800-353-5949 | [samaritanspurse.org/occ](https://www.samaritanspurse.org/occ)



View solicitation disclosure information for Samaritan's Purse online at [samaritanspurse.org/disclosure](https://www.samaritanspurse.org/disclosure)



UNIVERSITY OF DELAWARE
**COOPERATIVE
EXTENSION**



National 4-H Conference Application for Delaware Washington, DC – March 28-April 2, 2020

National 4-H Conference is the annual premiere national civic engagement opportunity for 4-H members across the country. Conference is a hands-on, working conference in which delegates participate in a variety of programs and activities. Participants have the opportunity to practice and apply in a real world setting their newly developed and refined skills.

Who can apply? Delaware 4-H'ers in good standing, currently in their sophomore or junior year of high school are encouraged to apply.

How do I apply? All 4-H'ers interested in applying must submit a completed application to the State 4-H Office by the deadline. A completed application includes the general information page with signatures from a 4-H leader and county 4-H agent, open-ended questions and a one-page essay. In addition to the application, applicants will be asked to come in for an in-person interview.

When is the deadline? All applications are due to the State 4-H Office no later than **Monday, December 2, 2019**. This is a firm deadline and applications must be at the office by 4:00 pm on the due date in order to be considered.

Can I apply more than one time? If you have applied previously and were not accepted, you may apply again provided you still meet the eligibility requirements.

For more information about National 4-H Conference, including a sample schedule, workshop topics, and more, please visit the website:

<http://www.4-h.org/4-h-conference/>

If you have any questions, please contact your local county office or the State 4-H Office at (302) 831-2509.

Thank you for your interest in attending the 2020 National 4-H Conference.

National 4-H Conference Application for Delaware Washington, DC – March 28-April 2, 2020

Type your answers in the shaded areas.			
First name		Last Name	
Street		City/State/Zip Code	
County		Date of Birth	
Gender		Years in 4-H	
Age January 1 this year		Age today	
Home phone		Parent's work phone	
Your cell phone		Your E-mail address	
Mother's name		Father's name	
Name of 4-H Club		T-shirt size	<input type="checkbox"/> S <input type="checkbox"/> M <input type="checkbox"/> L <input type="checkbox"/> XL <input type="checkbox"/> XXL
Name of school		Grade in school	
Do you have any food allergies?	<input type="checkbox"/> Yes <input type="checkbox"/> No	Do you have any special assistance needs?	<input type="checkbox"/> Yes <input type="checkbox"/> No
Food allergy explanation		Special assistance needs explanation	
What career path do you plan to pursue?			
<i>Ethnicity/race is requested for reporting purposes only to USDA.</i>			
Ethnicity	<input type="checkbox"/> Hispanic <input type="checkbox"/> Non-Hispanic	Race	<input type="checkbox"/> White <input type="checkbox"/> Black <input type="checkbox"/> Asian <input type="checkbox"/> Am. Indian/Alaskan Native

Statement by 4-H Member

I have personally prepared this report and certify that it accurately reflects my work and ideas. I agree to return to my club and county to implement a leadership project with the other National 4-H Conference delegates from Delaware.

Date: _____ Signature of 4-H Member: _____

Approval of this Report

Date: _____ Signature of Parent or Guardian: _____

Date: _____ Signature of Local 4-H Leader (not a parent): _____

Date: _____ Signature of County 4-H Agent: _____

Deadline: Monday, December 2, 2019

1. **4-H Project Summary** – List all major projects you have participated in as a 4-H member. Include all projects and years of participation.

2. **4-H Participation Summary** – List all major 4-H programs, activities and events you have participated in as a 4-H member. Include all programs, activities, events, contests, etc.

3. **Describe your leadership and citizenship experiences within 4-H.** – Include all projects, community service, activities, etc.

4. **List three skills you have developed through your 4-H projects. How have the experiences and skills you acquired through 4-H helped to influence your future goals and plans?**

5. **Explain why you should be selected as a delegate for National 4-H Conference?**

National 4-H Conference Essay

Instruction: Please select one essay topic from below and type your essay on the following page. It must not exceed one page in length, and the font must be 12-point.

Background for Essay topic 1: Throughout National 4-H Conference, delegates have the opportunity to explore issues that are currently affecting youth through Round Table discussions. Delegates are placed into various groups and assigned a specific topic area. Within these groups, delegates will research, discuss, collect data, and brainstorm solutions to their Round Table topic. The delegates then develop a presentation and deliver their findings to a federal agency. Round Table topics in the past have included issues on food security/hunger, alcohol and drug prevention, obesity, distracted driving, and adolescent mental health – just to name a few.

Essay topic 1: *Identify and describe an issue that is currently affecting our youth. Explain the issue and identify two key points that could contribute to the resolution of the issue.*

or

Essay topic 2: *How do you think 4-H changed your life up until this point? What might be different if you had not joined 4-H? How do you believe the skills you have learned thus far will impact you later in life? Please provide specific examples of 4-H moments that have helped shape you as a person.*

Please submit all materials by **Monday, December 2, 2019, to the State 4-H Office.**

**State 4-H Office
531 S. College Avenue
113 Townsend Hall
Newark, DE 19716**

"Cooperative Extension Education in Agriculture and Home Economics, University of Delaware, Delaware State University and the United States Department of Agriculture cooperating. Distributed in furtherance of Acts of Congress of May 8 and June 30, 1914. Delaware Cooperative Extension, University of Delaware. It is the policy of the Delaware Cooperative Extension System that no person shall be subjected to discrimination on the grounds of race, color, sex, disability, age or national origin."

Essay narrative:



2020 National 4-H Healthy Living Summit Application for Delaware Washington, D.C. - February 13-16, 2020

Type your answers in the shaded areas.			
First name		Last Name	
Street		City/State/Zip Code	
County		Date of Birth	
Gender		Years in 4-H	
Age January 1 this year		Age today	
Home phone		Parent's work phone	
Your cell phone		Your E-mail address	
Mother's name		Father's name	
Name of 4-H Club (if applicable)		T-shirt Size	
Name of school		Grade in school	
Do you have any food allergies?	<input type="checkbox"/> Yes <input type="checkbox"/> No	Do you have any special assistance needs?	<input type="checkbox"/> Yes <input type="checkbox"/> No
Food allergy explanation		Special assistance needs explanation	
What career path do you plan to pursue?			
<i>Ethnicity/race is requested for reporting purposes only to USDA.</i>			
Ethnicity	<input type="checkbox"/> Hispanic <input type="checkbox"/> Non-Hispanic	Race	<input type="checkbox"/> White <input type="checkbox"/> Black <input type="checkbox"/> Asian <input type="checkbox"/> Am. Indian/Alaskan Native

Statement by Teen Applicant

I have personally prepared this report and certify that it accurately reflects my work and ideas. I agree to return to my community to implement a healthy living project with the other National 4-H Healthy Living Summit participants from Delaware.

Date: _____ Signature of 4-H Member: _____

Approval of this Report

Date: _____ Signature of Parent or Guardian: _____

Date: _____ Signature of Local 4-H Leader (not a parent): _____

Date: _____ Signature of County 4-H Agent: _____

Deadline: December 15, 2019

Type (or cut and paste) your answers in the text box.

A. **4-H MEMBERS PROJECT SUMMARY** (Include all projects for all years)

B. **PARTICIPATION SUMMARY** (Include all school, community or 4-H programs, activities, events, contests, etc.)

C. How do you think Delaware 4-H rates on Healthy Living initiatives? What are we doing right? What could be improved?

D. Why does Healthy Living matter to you?

- E. If you were given a \$10,000 opportunity grant to do something related to Healthy Living in 4-H and/or your community, what would you do?

"Cooperative Extension Education in Agriculture and Home Economics, University of Delaware, Delaware State University and the United States Department of Agriculture cooperating. Distributed in furtherance of Acts of Congress of May 8 and June 30, 1914. Delaware Cooperative Extension, University of Delaware. It is the policy of the Delaware Cooperative Extension System that no person shall be subjected to discrimination on the grounds of race, color, sex, disability, age or national origin."



2020 National Youth Photography Summit Application for Delaware Washington, DC – February 26- March 1, 2020

Type your answers in the shaded areas.			
First name		Last Name	
Street		City/State/Zip Code	
County		Date of Birth	
Gender		Years in 4-H	
Age January 1 this year		Age today	
Home phone		Parent's work phone	
Your cell phone		Your E-mail address	
Mother's name		Father's name	
Name of 4-H Club (if applicable)		T-shirt Size	
Name of school		Grade in school	
Do you have any food allergies?	<input type="checkbox"/> Yes <input type="checkbox"/> No	Do you have any special assistance needs?	<input type="checkbox"/> Yes <input type="checkbox"/> No
Food allergy explanation		Special assistance needs explanation	
What career path do you plan to pursue?			
<i>Ethnicity/race is requested for reporting purposes only to USDA.</i>			
Ethnicity	<input type="checkbox"/> Hispanic <input type="checkbox"/> Non-Hispanic	Race	<input type="checkbox"/> White <input type="checkbox"/> Black <input type="checkbox"/> Asian <input type="checkbox"/> Am. Indian/Alaskan Native

Statement by Teen Applicant

I have personally prepared this report and certify that it accurately reflects my work and ideas. I agree to return to my community to implement a photography project with the other National Photography Summit participants from Delaware.

Date: _____ Signature of 4-H Member: _____

Approval of this Report

Date: _____ Signature of Parent or Guardian: _____

Date: _____ Signature of Local 4-H Leader (not a parent): _____

Date: _____ Signature of County 4-H Agent: _____

Deadline: December 15, 2019

Type (or cut and paste) your answers in the text box.

A. ***4-H MEMBERS PROJECT SUMMARY*** (Include all projects for all years)

B. ***PARTICIPATION SUMMARY*** (Include all school, community or 4-H programs, activities, events, contests, etc.)

C. Why would you be interested in attending the National Youth Photography Summit?

D. Please provide an explanation for the following:

- 1) how you feel you have been able to use your 4-H photography project work as a form of art,
- 2) what life skills you have gained and
- 3) how you have used these life skills to be able to express yourself in a creative way.

E. If you were given a \$10,000 opportunity grant to do something to share or expand Photography as an art form in 4-H, what would you do?

"Cooperative Extension Education in Agriculture and Home Economics, University of Delaware, Delaware State University and the United States Department of Agriculture cooperating. Distributed in furtherance of Acts of Congress of May 8 and June 30, 1914. Delaware Cooperative Extension, University of Delaware. It is the policy of the Delaware Cooperative Extension System that no person shall be subjected to discrimination on the grounds of race, color, sex, disability, age or national origin."

Westville
Reporter: Caroline Allen

This month our club has been kept very busy! From making ornaments and decorating our Trim-a-Tree to preparing our "Candyland-themed Christmas" float for the Harrington Christmas parade, our club has been meeting every weekend to work on our projects. We are looking forward to our approaching luau-themed club banquet and the holiday season!