



July 18-27, 2019



State Fair Newsletter

DELAWARE 4-H

The Delaware State Fair is just around the corner. It is not too soon for you to begin preparing and thinking about exhibits you will be entering this year, as well as the contests and events in which you will be participating. There are a few changes this year, so read the 4-H department premium catalog carefully.

ONLINE REGISTRATION

All youth enrolled in the Delaware 4-H program **as of March 1, 2019**, are eligible to exhibit articles made as a part of project or activity work, and participate in demonstration and judging programs outlined in this department of the Fair. Re-enrollment in 4H Online is mandatory in order to participate as a 4-H'er at the State Fair.

Registration Deadline: Entries will be accepted on the Delaware State Fair's website (www.delawarestatefair.com) beginning:

April 1 (9:00 AM) through June 1 (11:59 PM)

LATE ENTRIES WILL NOT BE ACCEPTED!!!

Attention Judging Contests Participants: The County Office Staff will provide names of participants for each judging contest directly to the fair. Members **DO NOT** have to enter online.

In order for the Delaware State Fair to better prepare for all exhibits, we ask that you only enter those classes which you will be able to complete and show at this year's Fair.

The fair pays an entry fee for each exhibit, event and/or contest you register for online. Entering **ONLY** those classes which you will actually show at the fair will maintain fees at the most minimal level.

If you are registering a team for an event, please register the team under your club name. **If you have two groups competing in the same event, just label them "Your Club Name" Team 1, "Your Club Name" Team 2, etc.** If you do not have an email address, you may use your County 4-H Office email address, and they will mail you your confirmation.

RULES FOR ALL EXHIBITS

- No item should be entered by a 4-H exhibitor that cannot be displayed "as is" out on the display floor.
- No premium will be awarded if exhibit is not displayed.
- No plastic covering is permitted on clothing exhibits.
- Any exhibit included in a frame should include wire or hooks for hanging.
- Participants must be present at the stated START time for all 4-H Animal Judging Contests or they will not be able to participate (always plan to arrive in advance of start time).



EXHIBIT CHECK-IN INSTRUCTION

1. Exhibit Check-In: *Entry tags will be distributed to you by your 4-H Leader. Please check them for accuracy. If you have errors, contact the fair immediately to correct them. Please tag your exhibits prior to bringing them to the fair.*

- ⇒ All exhibits (except Foods, Vegetables, Indoor/Outdoor Gardening and Cut flowers) are brought to the 4-H exhibit area between 3:00 PM and 6:00 PM on Monday, July 15.
- ⇒ Foods, Vegetables, Indoor/Outdoor Gardening, and Clover Bud (Class 2 if live plant or vegetable and Class 7) are brought to the fair between 8:30 and 11:00 AM on Thursday, July 18.
- ⇒ Cut flowers, Section T, will be accepted on Wednesday, July 24 between 10:00 AM and 12:00 Noon.

2. Tips on Preparing Your Exhibits for the Fair: Please read the rules at the beginning of the 4-H department premium list and each section carefully.

- 4-H youth age 5-7 may enter in the Cloverbud classes, Section A, ONLY. (Your 4-H age is determined on January 1 of the current year.)
- You may enter only one exhibit per class.



3. Review the class description carefully. Exhibits not meeting the class description can not receive a blue ribbon or premium and may be disqualified. Exhibits may be marked down or disqualified for the following reason:

- **Incorrect number of items for the class-** two like-jars of canning five carrots. Do you have the correct number?
- **Incorrect size of poster-** 14" x 22" is the most common size of poster. Is your poster the correct size? Individual photographs should not exceed 6" x 8".
- **No foam core** for posters or photos, please. It is too thick to use with our hangers at the fair.
- **Art and needlework** need to be **completed and appropriately finished and prepared to hang.** A hanger is not a piece of string taped on the back. There is less damage to exhibits if they are securely hung on the exhibit racks.

4. Label each exhibit with your name, 4-H County, age, years in project, club and class, in addition to the entry tag the fair provides you. In case your entry tag becomes lost or detached, we will know who the exhibit belongs to. Age is especially important so the judge knows how old you are. Print off a sheet of mailing labels for a great quick way to include this information on all your exhibits. It sure beats hand-writing the information.

5. Attach the entry tag securely. Use masking tape to attach tags to the backs of posters, photos, etc. Use a small safety pin to attach tags to any fabric article. Please do not use straight pins or scotch tape as they come loose too easily.

EXHIBIT CHECK-IN SCHEDULE

Monday, July 15

3:00 PM to 6:00 PM

- Arts, Crafts & Needlework
- Electric
- Photography
- Canning/Drying
- Entomology/Beekeeping
- Place Setting Contest
- Clover Bud
- Field Crops
- Science
- Computers
- Floriculture
- Textile & Clothing
- Conservation & Natural Resources
- Other Projects
- Woodworking

Thursday, July 18

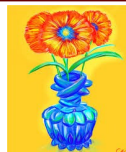
8:30 AM to 11:00 AM

- Clover Bud (Class 2 if live plant or vegetable and Class 7)
- Indoor and Outdoor Gardening
- Food
- Vegetables

Wednesday, July 24

10:00 AM to 12:00 Noon

- Cut Flowers



ALL ENTRIES ARE SUBJECT TO THE FOLLOWING RULES



Rule 1: Each 4-H'er must use the Delaware State Fair website to enter their exhibit on-line when entering Exhibits, Demonstration Events, Judging Contests, Consumer Bowl, Avian Bowl, Public Speaking, Tractor Driving, Lawn Tractor Driving and Archery. Entry deadline is June 1, 2019. Completed entry tags will be provided to the exhibitor to attach to exhibits. Please make sure your entry tag is ATTACHED TO YOUR EXHIBIT before entering the Fairground.

Rule 2: 4-H'ers—age 5 to 7, Cloverbuds, are eligible to enter Section A ONLY.

Rule 3: All articles exhibited **must be made or grown by 4-H member since last year's Fair.**

Rule 4: A youth pass will be given to 4-H Department exhibitors.

Rule 5: No awards will be made for exhibits which do not meet minimum standards.

Rule 6: Exhibitors may make only one entry in each class.

Rule 7: No item should be entered by a 4-H member that cannot be displayed "as is" out on the display floor.



Rule 8: No premium will be awarded if an exhibit is not displayed.

Rule 9: Every article exhibited **SHOULD** be labeled with name, 4-H county, age, year in project, club and class, in addition to the entry tag, to eliminate errors and lost articles. Please attach in such a way that it is not noticeable.

Rule 10: Any exhibit included in a frame should include wire or hooks for hanging. Hangers are not necessary for exhibits on poster board or mat board.

Rule 11: If an exhibit includes a poster, posters are evaluated based on the following guidelines:

- Should be simple, not wordy, and provide a quick message in a concise format.
- Should be easy to read and have a single message/fact/point of interest
- Letters and words should be clear, legible and straight
- Neatness
- Colorful
- Use of visual or graphic is important

Rule 12: **ALL EXHIBITS MUST BE REMOVED FROM THE BUILDING BETWEEN 8:00 AM AND 12:00 NOON ON SUNDAY, JULY 28.** Every member must make arrangements for someone to pick up their exhibits if they are not able to do so themselves. There should not be an expectation for your exhibits to automatically be taken back to your respective county 4-H office.

Rule 13: Care will be taken to protect the exhibits from injury, but the Delaware State Fair will not in any way hold themselves responsible for accidents, loss and damage by water, fire, theft or otherwise, whatever may be the cause or extent of the damage or loss sustained. All exhibits are entered at the owner's risk.

PREMIUM \$\$\$\$ QUESTIONS

Questions regarding placing and/or premiums for the 4-H Department must be made in writing to the State 4-H office prior to August 15, 2019. Every effort will be made to eliminate errors during the payment of premiums. However, if an exhibitor finds an error, proof of such error must be communicated to the Delaware State Fair office on or before November 1, 2019. After this date no corrections will be considered. Checks not cashed AFTER 90 days from issue, WILL NOT BE REISSUED.

4-H STATE FAIR FLOATS



Each county 4-H program is invited and encouraged to have a 4-H float in the nightly Delaware State Fair 4-H Parade. All 4-H members are encouraged to ride these floats in this parade in an effort to promote 4-H.





Tractor Driving & Lawn Tractor Driving Contests

The **Tractor Driving Contest** will be held on **Wednesday, July 24 at 11:00 AM, in the Quillen Arena.**

Participants should arrive at the Quillen Arena by 10:30 AM to SIGN IN. There will only be a senior category in this event. Age is determined as of January 1 of the current year.

The **Lawn Tractor Driving Contest** will be held on **Saturday, July 27, at 9:00 AM, in the Quillen Arena.**

Participants should arrive at the Quillen Arena beginning at 8:30 AM to SIGN IN (see times below). There will be three categories offered. Participants may only enter one age category. Experienced participants, younger than 14, may participate in the senior event, but are then ineligible to participate in the junior category.

- Beginner (ages 8-10)- Arrive 10:00 AM
- Junior (ages 11-13)- Arrive 9:15 AM
- Senior (ages 14-19)- Arrive 8:30 AM



Participants MUST have participated in a training at the State, county or club level in order to participate in both of these events.

ALL PARTICIPANTS MUST ENTER THIS EVENT BY JUNE 1 USING THE DELAWARE STATE FAIR ONLINE SYSTEM.

AGE IS DETERMINED AS OF JANUARY 1 OF THE CURRENT YEAR.

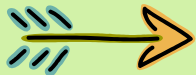
Class

- 357. Tractor Driving – Senior Division (ages 14-19)
- 358. Lawn Tractor Driving—Beginner Division (ages 8-10)
- 359. Lawn Tractor Driving—Junior Division (ages 11-13)
- 360. Lawn Tractor Driving—Senior Division (ages 14-19)

Participants are encouraged to visit the State 4-H website in order to obtain more information about these two events: <http://extension.udel.edu/4h/state-4-h-events/engineering-tractor-contests/>

Any questions related to these events should be directed to the State 4-H Office via email to de4h@udel.edu, or by calling 302-831-2509.

Participants MUST wear the proper attire to participate in the event (clothing and shoes).



Archery Contest

The State 4-H Archery Contest will be held on **Friday, July 26**. The event location AND registration will be the **Purple Parking Lot** outside of the main fairgrounds (same location as the 2018 event). Shuttle service from the 4-H building to the contest site will be available. **Shuttles will leave at 12:15 pm and 1:00 pm.** Participants can also decide to travel on their own directly to the event site. **All participants must enter this event by June 1 at the Delaware State Fair's website. If SPECIAL TIME ACCOMMODATIONS are needed for this event, you must contact the State 4-H Office at de4h@udel.edu by June 15.**

There will be three age groups. Age is determined as of January 1 of the current year. The following reporting times will be used:

Senior (ages 14-19) – report time is 12:30 PM	Intermediate (ages 11-13) – report time is 1:15 PM	Junior (ages 8-10) – report time is 2:00 PM
--	---	--

Competitions will be held in both Recurve and Compound categories. Participants may participate in both categories. Special Note: Participants must remain until ALL shooters have finished shooting within a respective category and age division.

Qualifications: Youth must be ages 8-19 years old, and be participating in a 4-H Archery Club or other 4-H Shooting Sports activities. Participants must have been through 4-H Shooting Sports Archery training camp, club or outreach activity.

Rules: Check online at <http://extension.udel.edu/4h/projects-activities-for-members> (scroll down to Shooting Sports) or check with your County Office.

Equipment: Recurve bows and arrows will be provided, but you may bring your own. Compound bows and arrows will NOT be provided. Safety equipment (arm guards and finger tabs) will be provided and required.

Class:

- 361. Recurve Bow – Junior (ages 8-10)
- 362. Recurve Bow – Intermediate (ages 11-13)
- 363. Recurve Bow – Senior (ages 14-19)
- 364. Compound Bow – Junior (ages 8-10)
- 365. Compound Bow – Intermediate (ages 11-13)
- 366. Compound Bow – Senior (ages 14-19)





State Avian Bowl

The State Avian Bowl Contest will be held on Saturday, July 27, at 1:00 PM in the Centre. The Delaware State Fair will award premiums to the top three teams in competition. A team may consist of 2-4 members ages 8 to 19. Clubs may enter multiple teams and can identify them as Team 1, Team 2, etc. Rules and study materials are available from your County 4-H Office. Please contact Susan Garey at 302-730-4000 if you have any questions about this event.

TEAMS MUST ENTER THIS EVENT BY JUNE 1 USING THE DELAWARE STATE FAIR ONLINE SYSTEM. ENTER TEAM UNDER YOUR 4-H CLUB NAME.

Class 351. Avian Bowl

Consumer Champions Bowl

The Consumer Champions Bowl will take place on Sunday, July 21, at 1:00 PM in the Centre. The Delaware State Fair will award premiums to the top three teams in competition. A team may consist of 2-4 members ages 8 to 19. There are no age categories for this event. Clubs may enter multiple teams and can identify them as Team 1, Team 2, etc. Rules and study materials are available from your County 4-H Office.

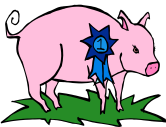
TEAMS MUST ENTER THIS EVENT BY JUNE 1 USING THE DELAWARE STATE FAIR ONLINE SYSTEM. ENTER TEAM UNDER YOUR 4-H CLUB NAME.



Class 352. Consumer Champions Bowl

Livestock and Poultry

4-H is not responsible for the management of the livestock and poultry departments at the fair. All shows are open shows with junior classes. Please read and follow their rules and instructions carefully. Livestock to be sold in the Jr. Livestock Auction must be tagged with official DE State Fair tags at the times and locations listed in the livestock section of the fair premium list.



Public Speaking

The 4-H Public Speaking contest will be held Friday, July 19, at 6:00 PM in the Centre. County winners in the Beginner I, Beginner II, Junior and Senior categories will speak.

Class

- 353. Beginner I (ages 8-9)
- 354. Beginner II (ages 10-11)
- 355. Junior (ages 12-13)
- 356. Senior (ages 14-19)



Talent Show

The State 4-H Talent Show will be held on Thursday, July 18, beginning at 6:00 PM on the stage in the Centre. There will be a limited number of talent acts that will participate. **Selection of acts will be made on a first-come, first-served basis based on when an entry is submitted.**

Presentations will be by both individuals and groups. **4-H members may ONLY PARTICIPATE IN ONE OF THESE CATEGORIES, NOT BOTH.** For group acts, enter under the 4-H Club name. Individual presentations will be divided into two age categories: Beginner (ages 8-12 yrs. old) and Senior (ages 13-19 yrs. old). Age is determined as of January 1 of the current year.

Cloverbud members are permitted to participate, but cannot compete. Green participation ribbons will be awarded to all Cloverbud members.

All talent show acts will be limited to a **2 minute maximum set up time. Talent acts must not exceed 5 minutes.**

ALL EQUIPMENT needed for the talent presentation is the responsibility of the performer.

Class

- 347. Cloverbud (ages 5-7)
- 348. Beginner Individual (ages 8-12)
- 349. Senior Individual (ages 13-19)
- 350. Group



Only so many acts can perform in the Talent Show. Your spot in the show is not confirmed until you receive a confirmation email. Once you are confirmed, you will receive a form that must be completed and returned to the State 4-H Office by July 1 or you will forfeit your spot in the Talent Show.

REGISTER BY JUNE 1 either using the [online](#) link or by submitting the paper entry form to the State 4-H Office. This form, as well as the online link, is available at the State 4-H website under the Fair Section. Space is limited so please register EARLY.

State 4-H Demonstrations/Illustrated Talks

Only winners of County Contests, ages 8 and older, are eligible to participate in the State Contest. Please refer to the guidelines for demonstrations and illustrated talks. **Participants will be given 5 minutes for set-up. Demonstrations must be 3 minutes in length and are not to exceed 15 minutes.** For each 15 seconds “under” or “over” the time allowed for set-up or for the demonstration, 1 point will be deducted. **Make sure you enter the appropriate demonstration class on your online entry form.**



4-H Demonstrations will take place at 10:00 AM on the following days:

- General Demonstrations: Monday, July 22
- Plant & Environmental Sciences: Wednesday, July 24
- Family and Consumer Sciences: Thursday, July 25
- Animal Science: Friday, July 26

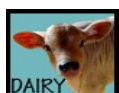
Please contact your County Office by **June 15** if you have any special needs due to work or livestock shows. Demonstration presentation times will be sent to participants under separate letter.

If you are using a PowerPoint presentation in your Demonstration, the deadline to submit it to the State 4-H Office via **UD Dropbox** is Friday, July 5. Go to <http://extension.udel.edu/4h/> and **click the Fair button.**

Judging Contests

Participants must be present at the stated START time for all Animal Judging Contests (classes 337, 344, 345 & 346) or they will not be able to participate in the contest. Attention Judging Contests Participants: The County Office Staff will provide names of participants for each judging contest directly to the fair. Members **DO NOT** need to enter online.

337. Poultry	Friday, July 19	9:00 AM	342. Horticulture	Saturday, July 20	1:00 PM
338. Photography	Saturday, July 20	1:00 PM	343. Wood Science	Saturday, July 20	1:00 PM
339. Wildlife Habitat	Saturday, July 20	1:00 PM	344. Livestock	Monday, July 22	9:00 AM
340. Food and Nutrition	Saturday, July 20	1:00 PM	345. Dairy	Tuesday, July 23	9:00 AM
341. Textiles and Clothing	Saturday, July 20	1:00 PM	346. Horse	Wednesday, July 24	9:00 AM



Horse and Pony Show

The **State 4-H Horse and Pony Show** will be held in the Quillen Arena on **Friday, July 26**, at 9:00 AM and is open to any currently enrolled Delaware 4-H member **as of March 1, 2019**. Horses and ponies may be shipped in the morning of the show or be stabled on the fairgrounds if they are participating in additional horse shows during fair week. Entries for the State 4-H Horse Show are made in the show office in the Quillen Arena the morning of the show. Proof of a negative coggins test and a certificate of vaccination for Equine Influenza and Rhinopneumonitis (EHV) within the past 180 days are required to show. Exhibitors are required to wear an ASTM/SEI approved helmet whenever mounted or driving. Show rules and class lists are available through county extension offices beginning May 1.



Reminders



Don't FORGET! All 4-H activities use January 1 in determining age. Young people must be age 8 and older for all competitive events.

Vegetable Exhibit PowerPoint - The County Offices have a PowerPoint available that can assist 4-H members in preparing their vegetable exhibits. Be sure to review this information before preparing your exhibits.

Section R – Food Exhibits – There is no icing allowed on any cupcake, cookie or brownie exhibit. **Put all food exhibits on disposable plates in a Ziploc bag with entry tag inside and name folded over and not shown.** Indicate type/flavor of food item on back of exhibit tag.

The **4-H Awards Celebration** will be held on Saturday, July 27, at 5:00 PM in the Centre. All Demonstration, Judging, Public Speaking, Archery, Avian Bowl, Consumer Bowl, Lawn Tractor, Tractor, State 4-H Horse Show and Conservation Display winners will be recognized.

New Classes /Class Revisions/Special Notes

Submission of Demonstration PowerPoint CD/DVDs to the State 4-H Office

- Friday, July 5 is the deadline
- Preferred submission method—UD Dropbox. Go to <http://extension.udel.edu/4h> and click Fair for easy instruction.
- Please contact your County Office by **June 15** if you have any special needs due to work or livestock shows. Demonstration presentation times will be sent to participants under separate letter.

Submission of Digital Photography Slideshows to the State 4-H Office

- Monday, July 15 is the deadline
- Entries should be submitted using the UD Dropbox.
Go to <http://extension.udel.edu/4h> and click Fair for easy instruction.



Conservation

- Conservation Boxes

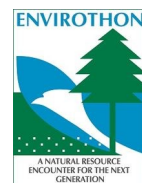
The following two special display classes will be offered in 2019, sponsored by the Delaware Association of Conservation Districts.

- 177. Display Class – Youth ages 8 to 13
- 178. Display Class – Youth ages 14 to 19

The topic of the display is based on the 5th subject area of the State Envirothon Competition. The topic for 2019 will be “Agriculture and the Environment: Knowledge and Technology to Feed the World.”

Additional information can be found at

<http://www.delawareenvirothon.org/> and
<http://www.envirothon.org/>.



State 4-H Archery Contest

If SPECIAL TIME ACCOMMODATIONS are needed for this event, you must contact the State 4-H Office at de4h@udel.edu by June 15.



Delaware State Grange and Farm Bureau



These two organizations are very supportive of the 4-H program. Both groups, especially the Grange, are in need of 4-H members and volunteers to help them in their food booths during the fair. The Grange needs help 8:00 AM to 11:00 AM shucking corn and preparing potatoes. The Grange and the Farm Bureau need help serving food from 11:00 AM to 2:00 PM, and 4:30 PM to 7:30 PM. We would like to see every teen donate one shift of time to this effort. The Grange has work opportunities for younger 4-H members. Please visit these booths on the Fairgrounds to sign up to volunteer.



Food Bank

We are supporting the Delaware Food Bank campaign to bring 1 million pounds of fresh food to Delaware family tables. If you are entering an exhibit on Thursday, July 18, you can help by bringing extra produce. All other exhibitors may bring canned or box foods when exhibits are brought to the Fair. Thank you in advance for helping those in need.



Host and Hostesses

Throughout the fair hosts and hostesses are needed to be available in the 4-H exhibit area to provide information about 4-H, projects on display, and prevent damage and theft of exhibits. This is a great opportunity for 4-H'ers age 8 and up. Get your best 4-H friend to join you and sign up to help!

Sign up.com



Help Us At The Fair

The fair is not possible without a cadre of talented 4-H'ers and adult volunteers that make it all happen. Consider volunteering to help set-up the building, check-in exhibits, and assist judges. Good help is always needed, especially adult volunteers.

Sign-up with your County 4-H Office by June 7. We ask that all helpers be age 8 or older.

Monday, July 1—9:00 AM to 4:00 PM

Clean-up and set-up building. Looking for older members who can set up exhibit booths and move them into place.
Decorate building. Cut corrugated paper and attach to exhibit booths. Desire older members who can cut paper and use a staple gun, as well as pay attention to detail.

Monday, July 15—2:30 PM to 6:30 PM

Exhibit check-in. Lunch is not provided, but snacks and drinks will be available at 4:30 PM. Sort exhibits by class and check tags for completeness.

Tuesday, July 16—8:45 AM to 4:00 PM

Judge's Clerks. Punch tags and attach ribbons. Record premiums. Must be at least 10 years old.
12:00 Noon to 3:00 PM Begin displaying photos and posters.

Wednesday, July 17—9:00 AM to 4:00 PM

Display Teams. Older 4-H members. Need to be able to work independently and in teams displaying.



Thursday, July 18 (Note: The second crew should be different from the 8:15 AM workers)

Check-in Foods—8:15 AM to 11:30 AM

Check tags for completeness and sort by class and assist with display.

Check-in Vegetables/Horticulture—8:15 AM to 11:30 AM

Check tags for completeness and sort by class and assist with display.

Foods Judge's Clerks and Display—11:00 AM to 4:00 PM

Must have had lunch prior to arriving at 11:00 AM. Punch tags, attach ribbons, record premiums, and assist judges. Assist with clean-up.

Vegetable/Horticulture Judge's Clerks and Display—11:00 AM to 4:00 PM

Must have had lunch prior to arriving at 11:00 AM. Punch tags, attach ribbons, record premiums, and assist judges. Assist with clean-up.

Wednesday, July 24—9:45 AM to 1:00 PM

Cut Flower check-in. Clerk and Display.

Sunday, July 28, Dismantle building. Two groups of volunteers.

7:30 AM to 10:30 AM Dismantle exhibit area but not move exhibits. Check-out clerks.

10:30 AM to 1:30 PM Big people needed to pull booths apart—muscle!

Dates to Remember

- June 1 DEADLINE! ALL online registrations with the Fair close at midnight.**
- June 7 Complete Host and Hostess Sign-Up Form online
- June 7 Helper Form due to County 4-H Office



Cooperative Extension programs and policies are consistent with federal and state laws and regulations on non-discrimination regarding race, sex, religion, age, color, creed, national or ethnic origin; physical, mental or sensory disability; marital status, sexual orientation, or status as a Vietnam-era or disabled veteran. Evidence of noncompliance may be reported through your local Cooperative Extension Office.

If you have special needs that need to be accommodated, please contact the State 4-H Office two weeks prior to the event (302-831-2509).



Delaware State Fair - 4-H Department Schedule

June

Mark your 4-H activities/commitments and post this on the family refrigerator.

1	Sat		Deadline for ALL ONLINE Fair entries!
7	Fri		Helper form deadline to your County 4-H Office. Host/Hostess Sign up online.
15	Sat		Entry deadline to the County 4-H Office for Judging Contests.

July

1	Mon	9 am - 4 pm	Clean-up and set-up 4-H Building. Decorate 4-H Building.
5	Fri		Deadline to submit Demonstration PowerPoint CD/DVDs to the State 4-H Office. Preferred submission method—UD Dropbox. Go to http://extension.udel.edu/4h and click Fair for easy instruction.
15	Mon	3 pm - 6 pm	Check-in exhibits: Non-perishables. Deadline to submit Digital Photography Slideshows to the State 4-H Office. Preferred submission method—UD Dropbox. Go to http://extension.udel.edu/4h and click Fair for easy instruction.
16	Tues	8:45 am - 4 pm 12 noon	Judge 4-H exhibits Begin displaying photos and posters
17	Wed	9 am - 4 pm	Display 4-H exhibits
18	Thurs	8:30 am-11 am 11 am - 4 pm 5 pm 6 pm	Check-in: foods, vegetables, indoor/outdoor gardening Judge and display Delaware State Fair officially opens. 4-H exhibits open to the public. 4-H Talent Show—Centre Stage
19	Fri	9 am 6 pm	Poultry Judging: 4-H Building Centre Conference Room State 4-H Public Speaking Contest – Centre Stage
20	Sat	1 pm	4-H Judging Contests: Food, Photography, Wildlife Habitat, Textiles & Clothing, Horticulture and Wood Science—Centre Conference Room
21	Sun	1 pm	4-H Consumer Bowl – Centre Stage
22	Mon	9 am 10 am	4-H Livestock Judging—Kent Building 4-H Demonstration Contest: General Category - Centre Stage
23	Tues	9 am	4-H Dairy Judging—Quillen Arena
24	Wed	9 am 10 am 10 am - 12 noon 11 am	4-H Horse Judging – Quillen Arena 4-H Demonstration Contest: Plant & Environmental Sciences Check-in: Cut flowers 4-H Tractor Driving – Quillen Arena (Participants arrive by 10:30 am)
25	Thurs	10 am	4-H Demonstration Contest: Family and Consumer Sciences – Centre Stage
26	Fri	9 am 10 am Varies	State 4-H Horse Show – Quillen Arena (Class list available May 1) 4-H Demonstration Contest: Animal Science – Centre Stage 4-H Archery Competition (Participants should report at designated reporting times)
27	Sat	9 am 1 pm 5 pm	4-H Lawn Tractor Driving – Quillen Arena (Participants arrive by 8:30 am) 4-H Avian Bowl – Centre Stage 4-H Awards Celebration – Centre Stage
28	Sun	8 am - 12 noon	4-H Department – Exhibit removal

**Fair Helper Form
for Youth and Adult Volunteers**

COUNTY FORM—Mail by June 7 to Your County Office

I want to help in the 4-H Department at the Fair:

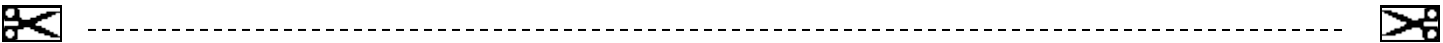
Name _____ Club _____ County _____ Phone _____
 Address _____ Email _____

- | | |
|--|--|
| <input type="checkbox"/> Monday, July 1, 9:00 am—4:00 pm
Clean-up, Set-up and Decorate Building | <input type="checkbox"/> Thursday, July 18, 8:15 am—11:30 am
Check-in Foods, Vegetables, and Indoor/Outdoor Gardening |
| <input type="checkbox"/> Monday, July 15, 2:30 pm—6:30 pm
Check-in Exhibits | <input type="checkbox"/> Thursday, July 18, 11:00 am—4:00 pm
Judge’s Clerks and Display |
| <input type="checkbox"/> Tuesday, July 16, 8:45 am—4:00 pm
Judge’s Clerk | <input type="checkbox"/> Wednesday, July 24, 9:45 am—1:00 pm
Check-in, Judge’s Clerks and Display Cut Flowers |
| <input type="checkbox"/> Tuesday, July 16, 12 noon—3 pm
Begin displaying photos and posters | <input type="checkbox"/> Sunday, July 28, 7:30 am —10:30 am
Dismantle Exhibit Area |
| <input type="checkbox"/> Wednesday, July 17, 9:00 am—4:00 pm
Display Exhibits | <input type="checkbox"/> Sunday, July 28, 10:30 am—1:30 pm
Dismantle Display Booths and Store |

New Castle County Ext. Office
 461 Wyoming Road
 Newark, DE 19716
 TEL: 302-831-8965
 FAX: 302-831-8934

Kent County Extension Office
 69 Transportation Circle
 Dover, DE 19901
 TEL: 302-730-4000
 FAX: 302-735-8130

Sussex County Extension Office
 Carvel Research & Educ. Center
 16483 County Seat Highway
 Georgetown, DE 19947
 TEL: 302-856-7303/FAX: 302-856-1845



Host and Hostess Sign-Up Form is now ONLINE !!!

Beginning April 1, the online form will be activated to sign up to be a Host-Hostess during the Fair. Two people will be allowed per time slot. Each time slot will be for 2 hours.



2019 State Fair 4-H Host/Hostess Sign Up
 Thu Jul 18, 2019 – Sat Jul 27, 2019

Thank you for signing up to be a Host/Hostess for the 2019 Delaware State Fair!

[Share this Invite](#)

Find Spots By Date
 Jul 18, 2019 Hide Full Spots Show My Spots

Thu Jul 18, 2019 0 of 4 Filled

SPOT	TIME	FILLED	PARTICIPANTS
> Host/Hostess Spot Thank you for volunteering to...	5:00pm – 7:00pm	0 of 2	🗨️ (0)
> Host/Hostess Spot Thank you for volunteering to...	7:00pm – 9:00pm	0 of 2	🗨️ (0)

Fri Jul 19, 2019 0 of 12 Filled

SPOT	TIME	FILLED	PARTICIPANTS
> Host/Hostess Spot Thank you for volunteering to...	9:00am – 11:00am	0 of 2	🗨️ (0)
> Host/Hostess Spot Thank you for volunteering to...	11:00am – 1:00pm	0 of 2	🗨️ (0)