



**July 22-31, 2021**



# State Fair Newsletter

DELAWARE 4-H

The Delaware State Fair is just around the corner and we are hopeful that we will receive all necessary approvals to have our 4-H Department and state competitions available to our members. It is not too soon for you to begin preparing and thinking about exhibits you will be entering this year, as well as the contests and events in which you will be participating. There are a few changes this year, so read the 4-H department premium catalog carefully. Please be aware that all rules and guidelines are subject to change based on current State of Delaware and University of Delaware COVID-19 restrictions.

## ONLINE REGISTRATION

All youth enrolled in the Delaware 4-H program **as of March 1, 2021** are eligible to exhibit articles made as a part of project or activity work, and participate in demonstrations, judging contests, and other contests outlined in this department of the Fair. Re-enrollment in 4H Online is mandatory in order to participate as a 4-H'er at the State Fair.

**Registration Deadline:** Entries will be accepted on the Delaware State Fair's website ([www.delawarestatefair.com](http://www.delawarestatefair.com)) beginning:

**April 1 (9:00 AM) through June 1 (11:59 PM)**

**LATE ENTRIES WILL NOT BE ACCEPTED!!!**

Attention Judging Contests Participants: The County Office Staff will provide names of participants for each judging contest directly to the fair. Members **DO NOT** have to enter online.

**In order for the Delaware State Fair to better prepare for all exhibits, we ask that you only enter those classes which you will be able to complete and show at this year's Fair.**

The fair pays an entry fee for each exhibit, event and/or contest you register for online. Entering **ONLY** those classes which you will actually show at the fair will maintain fees at the most minimal level.

If you are registering a team for an event, please register the team under your club name. **If you have two groups competing in the same event, just label them "Your Club Name" Team 1, "Your Club Name" Team 2, etc.** If you do not have an email address, you may use your County 4-H Office email address, and they will mail your confirmation. **NOTE:** Each individual team member does not have to enter.

## RULES FOR ALL EXHIBITS

- No item should be entered by a 4-H exhibitor that cannot be displayed "as is" out on the display floor.
- No premium will be awarded if exhibit is not displayed.
- No plastic covering is permitted on clothing exhibits.
- Any exhibit included in a frame should include wire or hooks for hanging.
- Participants must be present at the stated START time for all 4-H Animal Judging Contests or they will not be able to participate (always plan to arrive in advance of start time).



## EXHIBIT CHECK-IN INSTRUCTION

**1. Exhibit Check-In:** *Entry tags will be distributed to you by your 4-H Leader. Please check them for accuracy. If you have errors, contact the fair immediately to correct them. Please tag your exhibits prior to bringing them to the fair.*

- ⇒ All exhibits (except Foods, Vegetables, Indoor/Outdoor Gardening and Cut flowers) are brought to the 4-H exhibit area between 3:00 PM and 6:00 PM on Monday, July 19.
- ⇒ Foods, Vegetables, Indoor/Outdoor Gardening, and Clover Bud (Class 2 if live plant or vegetable and Class 7) are brought to the fair between 8:30 and 11:00 AM on Thursday, July 22.
- ⇒ Cut flowers, Section T, will be accepted on Wednesday, July 28 between 10:00 AM and 12:00 Noon.

**2. Tips on Preparing Your Exhibits for the Fair:** Please read the rules at the beginning of the 4-H department premium list and each section carefully.

- 4-H youth age 5-7 may enter in the Cloverbud classes, Section A, ONLY. (Your 4-H age is determined on January 1 of the current year.)
- You may enter only one exhibit per class.



**3. Review the class description carefully.** Exhibits not meeting the class description can not receive a blue ribbon or premium and may be disqualified. Exhibits may be marked down or disqualified for the following reason:

- **Incorrect number of items for the class-** two like-jars of canning five carrots. Do you have the correct number?
- **Incorrect size of poster-** 14" x 22" is the most common size of poster. Is your poster the correct size? Individual photographs should not exceed 6" x 8".
- **No foam core** for posters or photos, please. It is too thick to use with our hangers at the fair.
- **Art and needlework** need to be **completed and appropriately finished and prepared to hang.** A hanger is not a piece of string taped on the back. There is less damage to exhibits if they are securely hung on the exhibit racks.

**4. Label each exhibit** with your name, 4-H County, age, years in project, club and class, in addition to the entry tag the fair provides you. In case your entry tag becomes lost or detached, we will know who the exhibit belongs to. Age is especially important so the judge knows how old you are. Print off a sheet of mailing labels for a great quick way to include this information on all your exhibits. It sure beats hand-writing the information.

**5. Attach the entry tag securely.** Use masking tape to attach tags to the backs of posters, photos, etc. Use a small safety pin to attach tags to any fabric article. Please do not use straight pins or scotch tape as they come loose too easily.

## EXHIBIT CHECK-IN SCHEDULE

### Monday, July 19

**3:00 PM to 6:00 PM**

- Arts, Crafts & Needlework
- Electric
- Photography
- Canning/Drying
- Entomology/Beekeeping
- Place Setting Contest
- Clover Bud
- Field Crops
- Science
- Computers
- Floriculture
- Textile & Clothing
- Conservation & Natural Resources
- Other Projects
- Woodworking

### Thursday, July 22

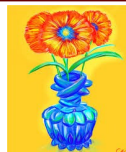
**8:30 AM to 11:00 AM**

- Clover Bud (Class 2 if live plant or vegetable and Class 7)
- Indoor and Outdoor Gardening
- Food
- Vegetables

### Wednesday, July 28

**10:00 AM to 12:00 Noon**

- Cut Flowers



## ALL ENTRIES ARE SUBJECT TO THE FOLLOWING RULES



**Rule 1:** Each 4-H'er must use the Delaware State Fair website to enter their exhibit on-line when entering Exhibits, Demonstration Events, Judging Contests, Consumer Bowl, Avian Bowl, Public Speaking, Tractor Driving, Lawn Tractor Driving and Archery. Entry deadline is June 1, 2021. Completed entry tags will be provided to the exhibitor to attach to exhibits. Please make sure your entry tag is ATTACHED TO YOUR EXHIBIT before entering the Fairground.

**Rule 2:** 4-H'ers—age 5 to 7, Cloverbuds, are eligible to enter Section A ONLY.

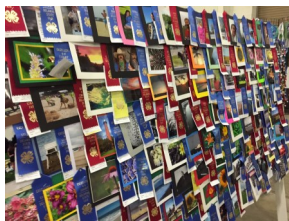
**Rule 3:** All articles exhibited **must be made or grown by 4-H member since last year's Fair.**

**Rule 4:** A youth pass will be given to 4-H Department exhibitors.

**Rule 5:** No awards will be made for exhibits which do not meet minimum standards.

**Rule 6:** Exhibitors may make only one entry in each class.

**Rule 7:** No item should be entered by a 4-H member that cannot be displayed "as is" out on the display floor.



**Rule 8:** No premium will be awarded if an exhibit is not displayed.

**Rule 9:** Every article exhibited **SHOULD** be labeled with name, 4-H county, age, year in project, club and class, in addition to the entry tag, to eliminate errors and lost articles. Please attach in such a way that it is not noticeable.

**Rule 10:** Any exhibit included in a frame or on art canvas should include a hanger, wire or hooks for hanging. Hangers are not necessary for exhibits on poster board or mat board.

**Rule 11:** If an exhibit includes a poster, posters are evaluated based on the following guidelines:

- Should be simple, not wordy, and provide a quick message in a concise format.
- Should be easy to read and have a single message/fact/point of interest
- Letters and words should be clear, legible and straight
- Neatness
- Colorful
- Use of visual or graphic is important

**Rule 12:** **ALL EXHIBITS MUST BE REMOVED FROM THE BUILDING BETWEEN 8:00 AM AND 12:00 NOON ON SUNDAY, AUGUST 1.** Every member must make arrangements for someone to pick up their exhibits if they are not able to do so themselves. There should not be an expectation for your exhibits to automatically be taken back to your respective county 4-H office.

**Rule 13:** Care will be taken to protect the exhibits from injury, but the Delaware State Fair will not in any way hold themselves responsible for accidents, loss and damage by water, fire, theft or otherwise, whatever may be the cause or extent of the damage or loss sustained. All exhibits are entered at the owner's risk.

## PREMIUM \$\$\$\$ QUESTIONS

Questions regarding placing and/or premiums for the 4-H Department must be made in writing to the State 4-H office prior to September 15, 2021. Every effort will be made to eliminate errors during the payment of premiums. However, if an exhibitor finds an error, proof of such error must be communicated to the Delaware State Fair office on or before November 1, 2021. After this date no corrections will be considered. Checks not cashed AFTER 90 days from issue, WILL NOT BE REISSUED.

## 4-H STATE FAIR FLOATS



In 2021, the Delaware State Fair will not be conducting the daily state fair parade. We will look forward to seeing our 4-H County floats in 2022





# Tractor Driving & Lawn Tractor Driving Contests

**The Tractor Driving Contest will be held on Wednesday, July 28 at 11:00 AM, in the Quillen Arena.**

Participants should arrive at the Quillen Arena by 10:30 AM to SIGN IN. There will only be a senior category in this event. Age is determined as of January 1 of the current year.

**The Lawn Tractor Driving Contest will be held on Saturday, July 31, at 9:00 AM, in the Quillen Arena.**

Participants should arrive at the Quillen Arena beginning at 8:30 AM to SIGN IN. There will be three categories offered. Participants may only enter one age category. Experienced participants, younger than 14, may participate in the senior event, but are then ineligible to participate in the junior category.

- Beginner (ages 8-10)
- Junior (ages 11-13)
- Senior (ages 14-19)



**Participants MUST have previously participated in a state event or participate in a training at the State, county or club level in order to participate in both of these events.**

**ALL PARTICIPANTS MUST ENTER THIS EVENT BY JUNE 1 USING THE DELAWARE STATE FAIR ONLINE SYSTEM. AGE IS DETERMINED AS OF JANUARY 1 OF THE CURRENT YEAR.**

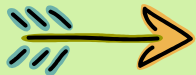
### Class

- 362. Tractor Driving – Senior Division (ages 14-19)
- 363. Lawn Tractor Driving—Beginner Division (ages 8-10)
- 364. Lawn Tractor Driving—Junior Division (ages 11-13)
- 365. Lawn Tractor Driving—Senior Division (ages 14-19)

Participants are encouraged to visit the State 4-H website in order to obtain more information about these two events: <https://www.udel.edu/academics/colleges/canr/cooperative-extension/personal-economic-development/4H-youth-development/events/>

Any questions related to these events should be directed to the State 4-H Office via email to [de4h@udel.edu](mailto:de4h@udel.edu), or by calling 302-831-2509.

**Participants MUST wear the proper attire to participate in the event (clothing and shoes).**



# Archery Contest

The State 4-H Archery Contest will be held on **Friday, July 30**. The event location AND registration will be the **Purple Parking Lot** outside of the main fairgrounds (same location as the 2019 event). Shuttle service from the 4-H building to the contest site will be available. **Shuttles will leave at 12:15 pm and 1:00 pm.** Participants can also decide to travel on their own directly to the event site. **All participants must enter this event by June 1 at the Delaware State Fair’s website. If SPECIAL TIME ACCOMMODATIONS are needed for this event, you must contact the State 4-H Office at [de4h@udel.edu](mailto:de4h@udel.edu) by June 15.**

There will be three age groups. Age is determined as of January 1 of the current year. The following reporting times will be used:

Senior (ages 14-19) – report time is 12:30 PM	Intermediate (ages 11-13) – report time is 1:15 PM	Junior (ages 8-10) – report time is 2:00 PM
--	---	--

Competitions will be held in both Recurve and Compound categories. Participants may participate in both categories. Special Note: Participants must remain until ALL shooters have finished shooting within a respective category and age division.

**Qualifications:** Youth must be ages 8-19 years old, and be participating in a 4-H Archery Club or other 4-H Shooting Sports activities. Participants must have been through 4-H Shooting Sports Archery training camp, club or outreach activity.

**Rules:** Check online at <https://www.udel.edu/academics/colleges/canr/cooperative-extension/personal-economic-development/4H-youth-development/events/> (scroll down to Archery) or check with your County Office.

**Equipment:** We strongly encourage all participants to bring their own equipment to the event. If you are unable to do this, recurve bows and arrows will be provided, but you may bring your own. Compound bows and arrows will NOT be provided. Safety equipment (arm guards and finger tabs) will be provided and required.

- 366. Recurve Bow – Junior (ages 8-10)
- 367. Recurve Bow – Intermediate (ages 11-13)
- 368. Recurve Bow – Senior (ages 14-19)
- 369. Compound Bow – Junior (ages 8-10)
- 370. Compound Bow – Intermediate (ages 11-13)
- 371. Compound Bow – Senior (ages 14-19)





## State Avian Bowl

The State Avian Bowl Contest will be held on Saturday, July 31, at 1:00 PM in the Centre. The Delaware State Fair will award premiums to the top three teams in competition. A team may consist of 2-4 members ages 8 to 19. Clubs may enter multiple teams and can identify them as Team 1, Team 2, etc. Individual team members DO NOT need to register. Rules and study materials are available from your County 4-H Office. Please contact Susan Garey at 302-730-4000 if you have any questions about this event.

**TEAMS MUST ENTER THIS EVENT BY JUNE 1 USING THE DELAWARE STATE FAIR ONLINE SYSTEM. ENTER TEAM UNDER YOUR 4-H CLUB NAME.**

**Class 356.** Avian Bowl Team

## Consumer Champions Bowl

The Consumer Champions Bowl will take place on Sunday, July 25, at 1:00 PM in the Centre. The Delaware State Fair will award premiums to the top three teams in competition. A team may consist of 2-4 members ages 8 to 19. There are no age categories for this event. Clubs may enter multiple teams and can identify them as Team 1, Team 2, etc. Individual team members DO NOT need to register. Rules and study materials are available from your County 4-H Office.

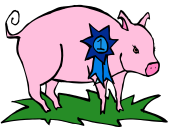
**TEAMS MUST ENTER THIS EVENT BY JUNE 1 USING THE DELAWARE STATE FAIR ONLINE SYSTEM. ENTER TEAM UNDER YOUR 4-H CLUB NAME.**



**Class 357.** Consumer Champions Bowl Team

## Livestock and Poultry

4-H is not responsible for the management of the livestock and poultry departments at the fair. All shows are open shows with junior classes. Please read and follow their rules and instructions carefully. Livestock to be sold in the Jr. Livestock Auction must be tagged with official DE State Fair tags at the times and locations listed in the livestock section of the fair premium list.



## Public Speaking

The 4-H Public Speaking contest will be held Friday, July 23, at 6:00 PM in the Centre. County winners in the Beginner I, Beginner II, Junior and Senior categories will speak.

- Class**
- 358. Beginner I (ages 8-9)
  - 359. Beginner II (ages 10-11)
  - 360. Junior (ages 12-13)
  - 361. Senior (ages 14-19)



## Talent Show

The State 4-H Talent Show will be held on Thursday, July 22, beginning at 6:30 PM on the stage in the Centre. There will be a limited number of talent acts that will participate. **Selection of acts will be made on a first-come, first-served basis based on when an entry is submitted.**

Presentations will be by both individuals and groups. **4-H members may ONLY PARTICIPATE IN ONE OF THESE CATEGORIES, NOT BOTH.** For group acts, enter under the 4-H Club name. Individual presentations will be divided into two age categories: Beginner (ages 8-12 yrs. old) and Senior (ages 13-19 yrs. old). Age is determined as of January 1 of the current year.

Cloverbud members are permitted to participate, but cannot compete. Green participation ribbons will be awarded to all Cloverbud members.

All talent show acts will be limited to a **2 minute maximum set up time. Talent acts must not exceed 5 minutes.**

**ALL EQUIPMENT needed for the talent presentation is the responsibility of the performer.**

**Class**

- 352. Cloverbud (ages 5-7)
- 353. Beginner Individual (ages 8-12)
- 354. Senior Individual (ages 13-19)
- 355. Group



Only so many acts can perform in the Talent Show. Your spot in the show is not confirmed until you receive a confirmation email. Once you are confirmed, you will receive a form that must be completed and returned to the State 4-H Office by July 1 or you will forfeit your spot in the Talent Show.

**REGISTER BY JUNE 1** either using the [online](#) link or by submitting the paper entry form to the State 4-H Office. This form, as well as the online link, is available at the State 4-H website under the Fair Section. Space is limited so please register EARLY.

## State 4-H Demonstrations/Illustrated Talks

Only winners of County Contests, ages 8 and older, are eligible to participate in the State Contest. Please refer to the guidelines for demonstrations and illustrated talks. **Participants will be given 5 minutes for set-up. Demonstrations must be 3 minutes in length and are not to exceed 15 minutes.** For each 15 seconds “under” or “over” the time allowed for set-up or for the demonstration, 1 point will be deducted. **Make sure you enter the appropriate demonstration class on your online entry form.**



**4-H Demonstrations will take place at 10:00 AM on the following days:**

- General Demonstrations: Monday, July 26
- Plant & Environmental Sciences: Wednesday, July 28
- Family and Consumer Sciences: Thursday, July 29
- Animal Science: Friday, July 30

Please contact your County Office by **June 15** if you have any special needs due to work or livestock shows. Demonstration presentation times will be sent to participants under separate letter.

If you are using a PowerPoint presentation in your Demonstration, the deadline to submit it to the State 4-H Office via **UD Dropbox** is Thursday, July 15. Link found on website here: <https://www.udel.edu/academics/colleges/canr/cooperative-extension/personal-economic-development/4H-youth-development/events/delaware-state-fair/>

## Judging Contests

**Participants must be present at the stated START time for all Animal Judging Contests (classes 342, 349, 350 & 351) or they will not be able to participate in the contest.** Attention Judging Contests Participants: The County Office Staff will provide names of participants for each judging contest directly to the fair. Members **DO NOT** need to enter online.

351. Horse	Sunday, June 27	TBD	345. Food and Nutrition	Saturday, July 24	1:00 PM
342. Poultry	Thursday, July 22	10:00 AM	346. Textiles and Clothing	Saturday, July 24	1:00 PM
350. Dairy	Thursday, July 22	10:00 AM	347. Horticulture	Saturday, July 24	1:00 PM
343. Photography	Saturday, July 24	1:00 PM	348. Wood Science	Saturday, July 24	1:00 PM
344. Wildlife Habitat	Saturday, July 24	1:00 PM	349. Livestock	Friday, July 30	8:30 AM



## Horse and Pony Show

The State 4-H Horse Show will not be held during the State Fair this year due to COVID fair livestock and animal show scheduling conflicts. We are looking for the opportunity to hold this event in August. More details will be provided once event approval and scheduling are in place.



## Reminders

All 4-H activities use January 1 in determining age. Young people must be age 8 and older for all competitive events.



**Vegetable Exhibit PowerPoint** - The County Offices have a PowerPoint available that can assist 4-H members in preparing their vegetable exhibits. Be sure to review this information before preparing your exhibits.

**Section R – Food Exhibits** – There is no icing allowed on any cupcake, cookie or brownie exhibit (except for class of 4 Decorated Cupcakes that resembles an animal). **Put all food exhibits on disposable plates in a Ziploc bag with entry tag inside and name folded over and not shown.** Indicate type/flavor of food item on back of exhibit tag.

The **4-H Awards Celebration** will be held on Saturday, July 31, at 5:00 PM in the Centre. All Demonstration, Judging, Public Speaking, Archery, Avian Bowl, Consumer Bowl, Lawn Tractor, Tractor, and Conservation Display winners will be recognized. 4-H members and parents are encouraged to attend!

## New Classes /Class Revisions/Special Notes

### New/Revised Classes

- Class 85– Prevention Video
- Class 86– Health Promotion Video
- Class 233 Revised– Prevention Exhibit
- Class 234– Health Promotion Exhibit
- Class 240- Poster Promoting Teens to seek Emotional and Mental Health Treatment (when needed)
- Class 244- 4-H Promotional Yard Sign– Individual
- Class 245– 4-H Promotional Yard Sign– Group

### Arts and Crafts

Class Moved:

- 4 Cupcakes Decorated to resemble an animal; only decorating ability is evaluated (Note: This exhibit will be **due on Thursday** along with other Food exhibits (and not brought in on Monday)

### Computer Exhibits

Items required to be submitted by Dropbox will be **due by July 15th**

### Conservation

- Conservation Boxes  
The following two special display classes will be offered in 2021, sponsored by the Delaware Association of Conservation Districts.
- 177. Display Class – Youth ages 8 to 13 years old
- 178. Display Class – Youth ages 14 to 19 years old

The topic of the display is based on the 5<sup>th</sup> subject area of the State Envirothon Competition. The topic for 2021 is “Water Resource Management: Local Control and Local Solutions”.

Additional information can be found at

<http://www.delawareenvirothon.org/> and

<http://www.envirothon.org/>.



## 4-H Clothing Showcase

The State 4-H Clothing Showcase Contest will be held on Thursday, July 22, at 6:00 PM on the Centre Stage. All participants will model and present their constructed garments on stage with awards announced at the conclusion.

Participants will be required to bring their Clothing Showcase constructed garments to their respective County 4-H Office by **Monday, July 6** along with their completed Clothing Showcase Application. Participants will then be required to come to the State Fair 4-H building on **Monday, July 19** based on a scheduled time that will be provided to them in order to meet and be interviewed by a judge(s) in your garment (your garment will already be at the fair building for you to change into).

**SEE CONTEST GUIDELINES TO DETERMINE APPROPRIATE CATEGORY BASED ON SEWING EXPERIENCE**

**ALL PARTICIPANTS MUST ENTER THIS EVENT BY JUNE 1 USING THE DELAWARE STATE FAIR ONLINE SYSTEM**

Class 372- Beginner

Class 373- Intermediate

Class 374- Advanced Intermediate

Class 375- Advanced



## Help Us At The Fair

The fair is not possible without a cadre of talented 4-H'ers and adult volunteers that make it all happen. Consider volunteering to help set-up the building, check-in exhibits, and assist judges. Good help is always needed, especially adult volunteers.

**Sign-up with your County 4-H Office by June 4.** We ask that all helpers be age 8 or older.

### Wednesday, June 30—9:00 AM to 4:00 PM

**Clean-up and set-up building.** Looking for older members who can set up exhibit booths and move them into place.  
**Decorate building.** Cut corrugated paper and attach to exhibit booths. Desire older members who can cut paper and use a staple gun, as well as pay attention to detail.

### Monday, July 19—2:30 PM to 6:30 PM

**Exhibit check-in.** Lunch is not provided, but snacks and drinks will be available at 4:30 PM. Sort exhibits by class and check tags for completeness.

### Tuesday, July 20—8:45 AM to 4:00 PM

**Judge's Clerks.** Punch tags and attach ribbons. Record premiums. Must be at least 10 years old.  
**12:00 Noon to 3:00 PM** Begin displaying photos and posters.

### Wednesday, July 21—9:00 AM to 4:00 PM

**Display Teams.** Older 4-H members. Need to be able to work independently and in teams displaying.

### Thursday, July 22 (Note: The second crew should be different from the 8:15 AM workers)

#### **Check-in Foods—8:15 AM to 11:30 AM**

Check tags for completeness and sort by class and assist with display.

#### **Check-in Vegetables/Horticulture—8:15 AM to 11:30 AM**

Check tags for completeness and sort by class and assist with display.

#### **Foods Judge's Clerks and Display—11:00 AM to 4:00 PM**

Must have had lunch prior to arriving at 11:00 AM. Punch tags, attach ribbons, record premiums, and assist judges. Assist with clean-up.

#### **Vegetable/Horticulture Judge's Clerks and Display—11:00 AM to 4:00 PM**

Must have had lunch prior to arriving at 11:00 AM. Punch tags, attach ribbons, record premiums, and assist judges. Assist with clean-up.

### Wednesday, July 28—9:45 AM to 1:00 PM

**Cut Flower check-in.** Clerk and Display.

### Sunday, August 1, Dismantle building. Two groups of volunteers.

7:30 AM to 10:30 AM Dismantle exhibit area but not move exhibits. Check-out clerks.

10:30 AM to 1:30 PM Big people needed to pull booths apart—muscle!



## Delaware State Grange and Farm Bureau



These two organizations are very supportive of the 4-H program. Both groups, especially the Grange, are in need of 4-H members and volunteers to help them in their food booths during the fair. The Grange needs help 8:00 AM to 11:00 AM shucking corn and preparing potatoes. The Grange and the Farm Bureau need help serving food from 11:00 AM to 2:00 PM, and 4:30 PM to 7:30 PM. We would like to see every teen donate one shift of time to this effort. The Grange has work opportunities for younger 4-H members. Please visit these booths on the Fairgrounds to sign up to volunteer.



## Food Bank Campaign

Delaware 4-H will continue to support the Delaware Food Bank by donating extra vegetables from our vegetable exhibits. AFTER judging, only 1 item will be displayed and all remaining items will be donated to the local Food Bank. 4-H members are also welcome to bring extra produce in to donate when they bring their exhibits to the fair. Other members may also assist in supporting this initiative by bringing in canned or boxed food items to donate.



## Host and Hostesses

Throughout the fair hosts and hostesses are needed to be available in the 4-H exhibit area to provide information about 4-H, projects on display, and prevent damage and theft of exhibits. This is a great opportunity for 4-H'ers age 8 and up. Get your best 4-H friend to join you and sign up to help!

[Sign up.com](http://Sign up.com)





## Delaware State Fair - 4-H Department Schedule

### June

**Mark your 4-H activities/commitments and post this on the family refrigerator.**

1	Tues		<b>Deadline for ALL ONLINE Fair entries!</b>
4	Fri		Helper form deadline to your County 4-H Office. Host/Hostess Sign up online.
15	Tues		<b>Entry deadline to the County 4-H Office for Judging Contests.</b>
27	Sun	TBD	4-H Horse Judging– Quillen Arena
30	Wed	9 am - 4 pm	Clean– up and set– up 4-H Building. Decorate 4-H Building.

### July

15	Thurs		Deadline to submit Demonstration PowerPoint CD/DVDs and Digital Photography Slideshows to the State 4-H Office. Preferred submission method—UD Dropbox. Go to <a href="https://www.udel.edu/academics/colleges/canr/cooperative-extension/personal-economic-development/4H-youth-development/events/delaware-state-fair/">https://www.udel.edu/academics/colleges/canr/cooperative-extension/personal-economic-development/4H-youth-development/events/delaware-state-fair/</a> for the link.
19	Mon	3 pm - 6 pm TBD	Check-in exhibits: Non-perishables. Clothing Showcase Participants to Be Judged in person at DSF
20	Tues	8:45 am - 4 pm 12 noon	Judge 4-H exhibits Begin displaying photos and posters
21	Wed	9 am - 4 pm	Display 4-H exhibits
22	Thurs	8:30 am-11 am 10 am 10 am 11 am - 4 pm 5 pm 6 pm 6:30 pm	Check-in: foods, vegetables, indoor/outdoor gardening Poultry Judging: 4-H Building Centre Conference Room 4-H Dairy Judging—Quillen Arena Judge and display Delaware State Fair officially opens. 4-H exhibits open to the public. Clothing Showcase— Centre 4-H Talent Show—Centre Stage
23	Fri	6 pm	State 4-H Public Speaking Contest – Centre Stage
24	Sat	1 pm	4-H Judging Contests: Food & Nutrition, Photography, Wildlife Habitat, Textiles & Clothing, Horticulture and Wood Science—Centre Conference Room
25	Sun	1 pm	4-H Consumer Bowl – Centre Stage
26	Mon	10 am	4-H Demonstration Contest: General Category - Centre Stage
28	Wed	10 am 10 am - 12 noon 11 am	4-H Demonstration Contest: Plant & Environmental Sciences– Centre Stage Check-in: Cut flowers 4-H Tractor Driving – Quillen Arena (Participants arrive by 10:30 am)
29	Thurs	10 am	4-H Demonstration Contest: Family and Consumer Sciences – Centre Stage
30	Fri	8:30 am 10 am Varies	4-H Livestock Judging—Kent Building 4-H Demonstration Contest: Animal Science – Centre Stage 4-H Archery Competition (Participants should report at designated reporting times)
31	Sat	9 am 1 pm 5 pm	4-H Lawn Tractor Driving– Quillen Arena (Participants should arrive by 8:30 am) 4-H Avian Bowl– Centre Stage 4-H Awards Celebration– Centre Stage

### August

1	Sun	8 am– 12 noon	4-H Department– Exhibit removal
---	-----	---------------	---------------------------------

## Fair Helper Form

**COUNTY FORM—Mail by June 4 to your County Office**

### for Youth and Adult Volunteers

I want to help in the 4-H Department at the Fair:

Name \_\_\_\_\_ Club \_\_\_\_\_ County \_\_\_\_\_ Phone \_\_\_\_\_

Address \_\_\_\_\_ Email \_\_\_\_\_

\_\_\_ Wednesday, June 30, 9:00 am—4:00 pm  
Clean-up, Set-up and Decorate Building

\_\_\_ Thursday, July 22, 8:15 am—11:30 am  
Check-in Foods, Vegetables, and Indoor/Outdoor Gardening

\_\_\_ Monday, July 19, 2:30 pm—6:30 pm  
Check-in Exhibits

\_\_\_ Thursday, July 22, 11:00 am—4:00 pm  
Judge's Clerks and Display

\_\_\_ Tuesday, July 20, 8:45 am—4:00 pm  
Judge's Clerk

\_\_\_ Wednesday, July 28, 9:45 am—1:00 pm  
Check-in, Judge's Clerks and Display Cut Flowers

\_\_\_ Tuesday, July 20, 12 noon—3 pm  
Begin displaying photos and posters

\_\_\_ Sunday, August 1, 7:30 am —10:30 am  
Dismantle Exhibit Area

\_\_\_ Wednesday, July 21, 9:00 am—4:00 pm  
Display Exhibits

\_\_\_ Sunday, August 1, 10:30 am—1:30 pm  
Dismantle Display Booths and Store

New Castle County Ext. Office  
461 Wyoming Road  
Newark, DE 19716  
TEL: 302-831-8965  
FAX: 302-831-8934

Kent County Extension Office  
69 Transportation Circle  
Dover, DE 19901  
TEL: 302-730-4000  
FAX: 302-735-8130

Sussex County Extension Office  
Carvel Research & Educ. Center  
16483 County Seat Highway  
Georgetown, DE 19947  
TEL: 302-856-7303/FAX: 302-856-1845



### Host and Hostess Sign-Up Form is now ONLINE !!!

Beginning April 1, the online form will be activated to sign up to be a Host-Hostess during the Fair. Two people will be allowed per time slot. Each time slot will be for 2 hours.



## Dates to Remember

**June 1 . . . . . DEADLINE! ALL online registrations with the Fair close at midnight.**

June 4 . . . . . Complete Host and Hostess Sign-Up Form online

June 4 . . . . . Helper Form due to County 4-H Office



Cooperative Extension programs and policies are consistent with federal and state laws and regulations on non-discrimination regarding race, sex, religion, age, color, creed, national or ethnic origin; physical, mental or sensory disability; marital status, sexual orientation, or status as a Vietnam-era or disabled veteran. Evidence of noncompliance may be reported through your local Cooperative Extension Office.

**If you have special needs that need to be accommodated, please contact the State 4-H Office two weeks prior to the event (302-831-2509).**