

Recent Developments in Delaware's Inland Bays Shellfish Aquaculture Program



*We Bring You Delaware's Great Outdoors through Science
and Service*

Statewide Activity Approval (SAA)

- December, 2016 Secretary Small signed Order approving SAA
 - Expedited permitting through the Wetlands & Subaqueous Lands Section for those acres.
 - There will be a form for Wetlands included with the application. DFW will send info to Wetlands.

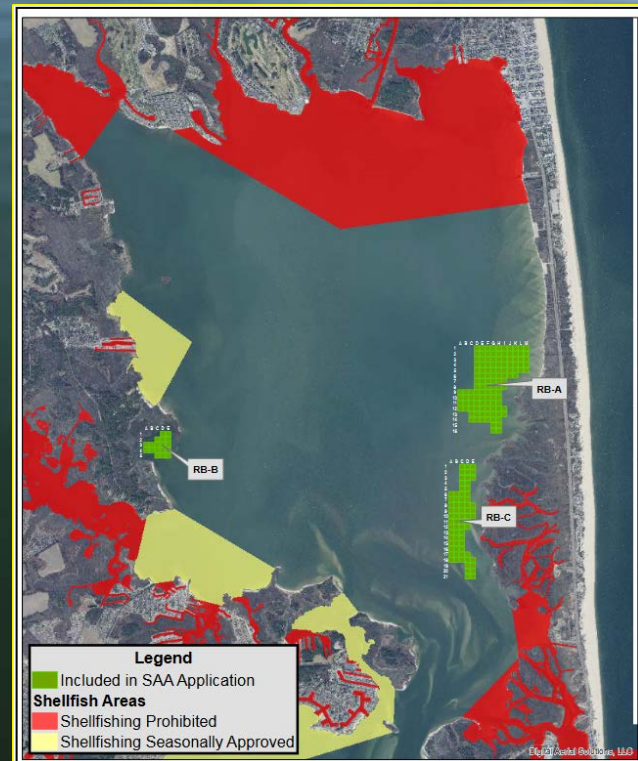


Changes in SAA

SADA pre-SAA Rehoboth



SADA included in SAA Rehoboth

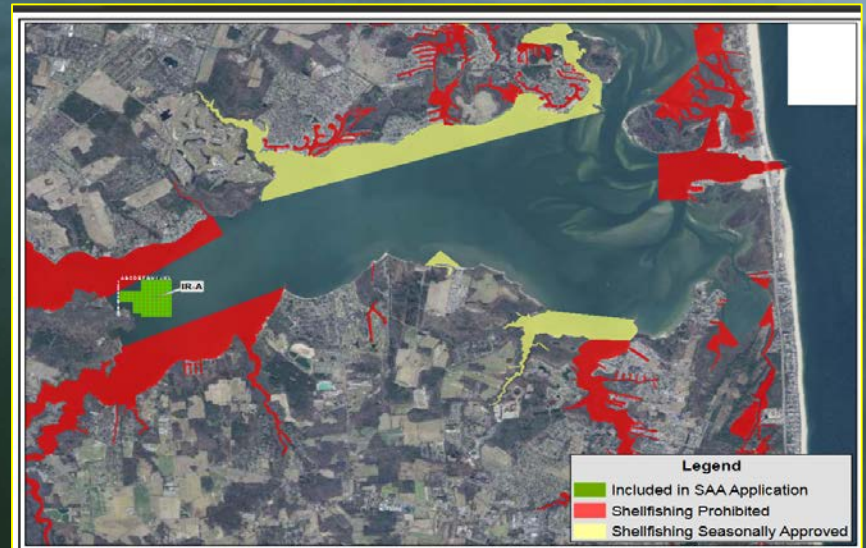


No change in Rehoboth Bay

Changes in SAA

SADA pre-SAA Indian River

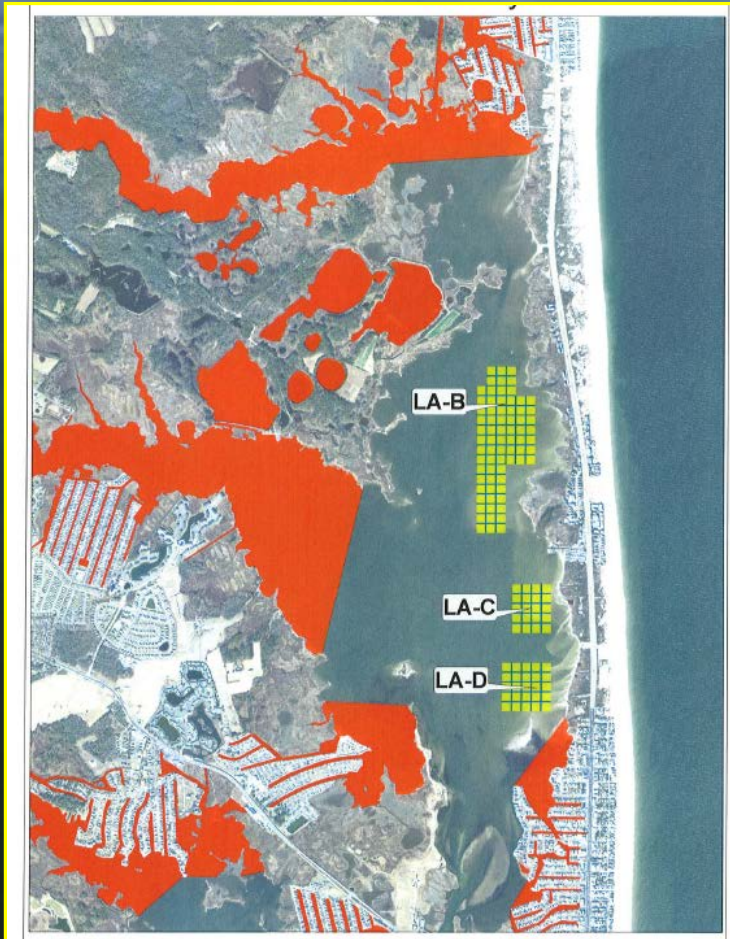
SADA included in Indian River SAA



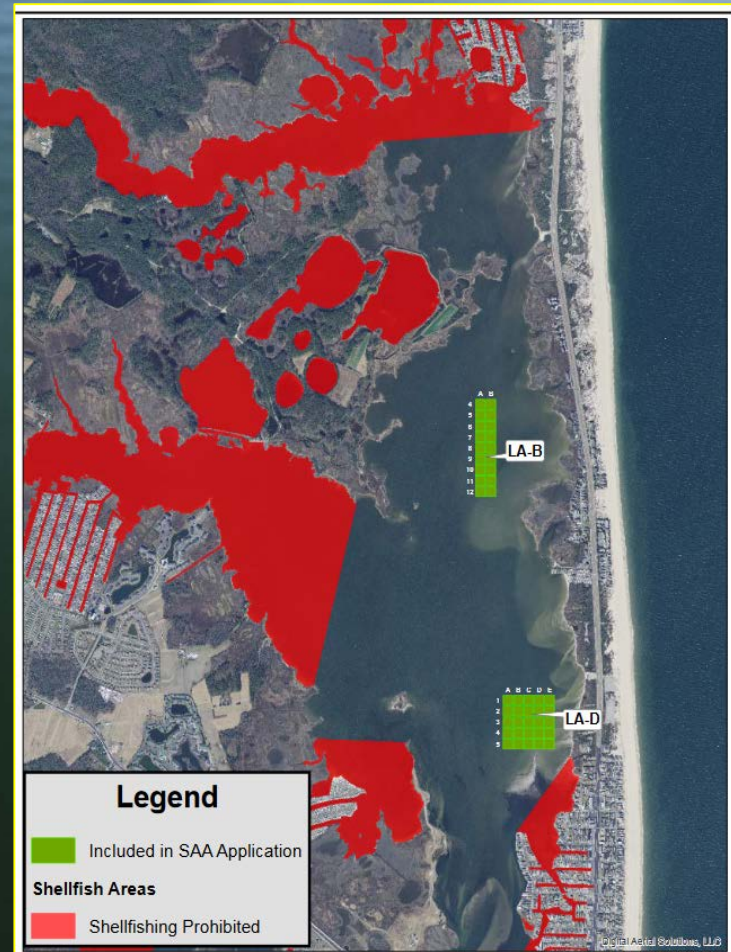
SAA does not include IR-B

Changes in SAA

SADA pre-SAA Little Assawoman



SADA included in Little Assawoman SAA



SAA includes changes to LA-B and removal of LA-C

Changes in SAA

- SAA-approved acres in Little Assawoman are restricted to clam culture only.
- Applications for areas outside of the SAA may be for clam or oyster culture.



USACE Status



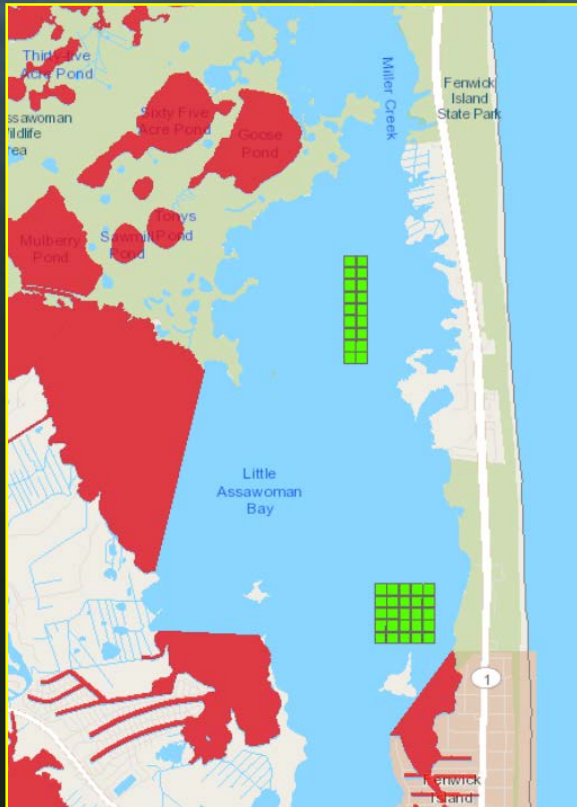
- Shellfish aquaculture requires USACE permitting.
- USACE Philadelphia has published their public notice of regional conditions for Delaware for NWP 48 (shellfish aquaculture)
- When these are in effect, they will allow for expedited permitting for SADA areas through USACE

New Tool For Delaware Shellfish Growers

- Launch of Inland Bays aquaculture siting map
- Map will show location of each acre (with coordinates)
 - Will be updated periodically to show which acres sampled for clam density
 - Which acres have too high clam density
 - When acres are pending (application in/lottery) or leased

Map Features

- [Link to Map](#)
- Switch between basemap backgrounds



Map Features

- Updates on clam density sampling, leasing, shellfish advisories

Legend

Shellfish Aquaculture Acres

Shellfish Aquaculture Acres

Available

Pending

Leased

High Clam Density

Not Sampled

Other

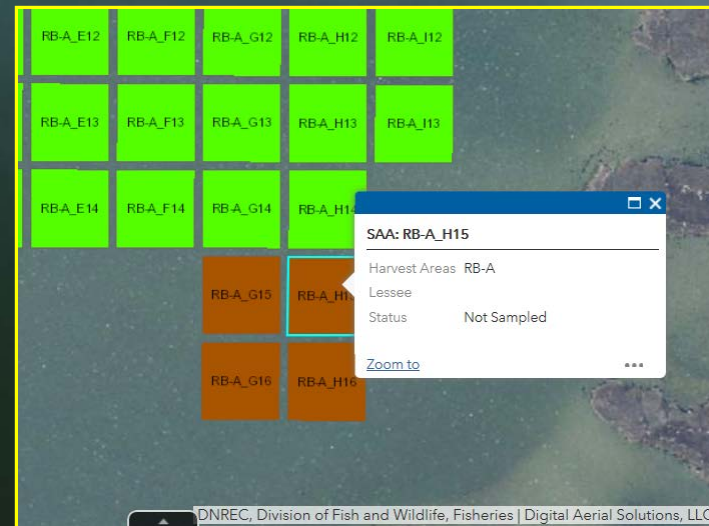
Shellfish Advisory

Shellfish Advisory

Prohibited

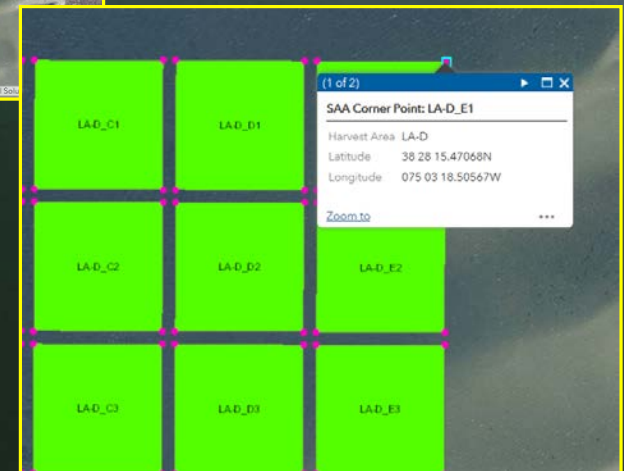
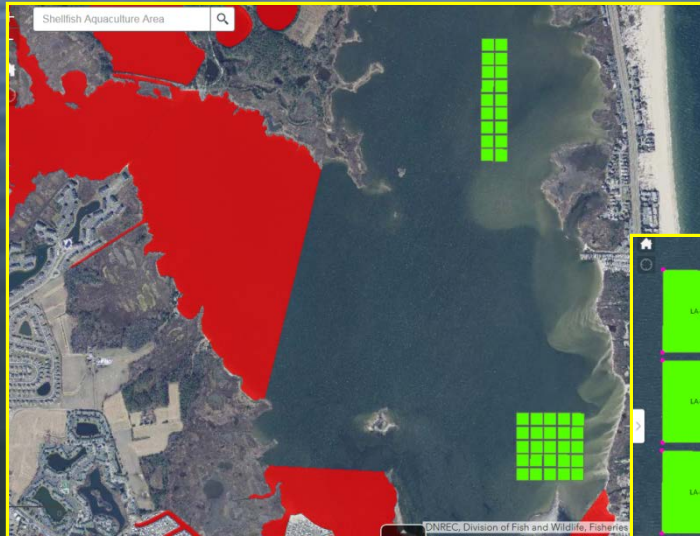
Seasonally Approved

Water



Map Features

- Explore specific acres in greater detail



In Conclusion

- SAA currently approved and in place
- NWP 48 regional conditions in process
- DNREC developing tools and forms that will be accessible on DNREC Shellfish Aquaculture site