

Web Publishing with Mozilla Composer

This course explains how to use Mozilla Composer to quickly produce and publish a basic Web page. Mozilla Composer provides a point and click way to create Web pages: it works like word-processing software and allows you to add links and images as well as text. With Composer, you can revise an existing web page to suit your needs or start from a blank page to create your own. Since Composer creates a HyperText Markup Language (HTML) file that you publish on the World Wide Web, it is not necessary to know HTML codes to publish to the Web. This method is only one way to create a Web page.

Class objectives

By the end of this class, you will be able to do the following:

- Identify the basic steps required to publish a Web document.
- Prepare your Copland directory to receive Web files (you only do this once).
- Create a basic Web page using Composer and preview it in Navigator.
- Transfer files to your Copland directory.
- Identify the basic elements of a Web page and their associated codes.

Note: This class is designed to be used at the Pearson Hall Training Center (Room 116) on PCs running Windows XP. The exercises may not work identically elsewhere.

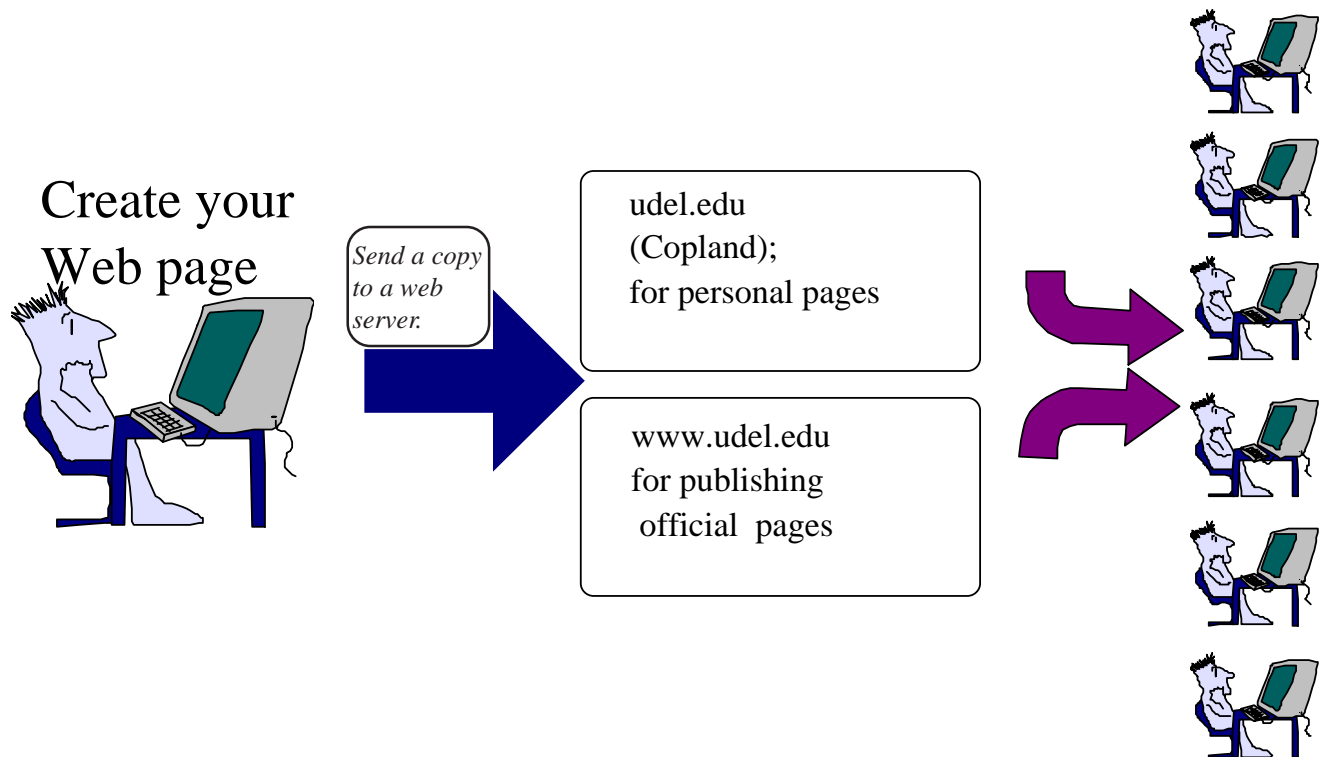
UNIX computer account

To transfer files to a Web directory, you must have an account on a Web server. At the University of Delaware, the Web server is on the central UNIX server. All University of Delaware faculty, staff and students can obtain an account on the central UNIX server. This account is a privilege granted to you by the University. You must act responsibly when you use it, or you can lose this privilege. If you are uncertain about the proper use of computing resources, read a copy of the *Policy for Responsible Computing* on the University's web site <www.udel.edu/ecce/policy.approved.html>.

Resources for learning more about WWW and HTML

There are many good online resources with information about preparing documents for the Web, including tutorials, style guides, editors, and other tools. You can find many of them listed at <<http://www.udel.edu/ideacenter/>>.

Publishing Web Pages on the World Wide Web



To publish a Web page, first create the page on your computer using a Web page editor or HTML code. Send a copy of the completed file to the Web server (Copland for personal pages, www for official University documents). Be sure that your files are protected so that others can view them. The documents are then ready for viewing.

Introduction

The World Wide Web (WWW) is a system that enables you to make information easily available to anyone anywhere who has a WWW browser (e.g., Mozilla, Netscape, Internet Explorer, Safari, Lynx). You make your information available by placing it in a file that is called a “page” or a “document” and is specially formatted using HTML. This language consists of an easy-to-learn set of codes that you include with the information you wish to publish. You then make the HTML file available to a WWW server.

In this course, you will publish a Web page using Mozilla Composer—a Web page editor that lets you design a document in a word-processing environment and creates the HTML file for you. Composer has a menu bar with pull-down options and Composition and Formatting toolbars with buttons for creating your document.

Publishing files on the World Wide Web

When you publish Web pages, be sure you have an understanding of the overall process. For each new page you publish, you will perform the following steps:

1. Create the page on your computer using a Web page editor or using HTML codes. The file you create remains on your computer’s hard drive.
2. Copy the file to the Web server (Copland) using the SSH File Transfer Program so that others can view it.
3. Once the file is uploaded to the Web server, you must set *protection codes* to allow others to view your Web page.

Note: If you set up your `public_html` directory for this class (see instructions on the following page), the protection codes will not need to be changed after you transfer your files. When you publish in official University directories, you will need to learn more about setting protection codes. Information is available on the web at <http://www.udel.edu/webstart/protections.html>.

4. Once your page is in place and available, you must either give others its address or have the page linked to from another page.

UNIX file structure

The UNIX file system is a hierarchy of directories and sub-directories starting from a single directory called root which is represented by a / (slash). Imagine this as similar to the root system of a plant or as an inverted tree structure. In turn, the directories and sub-directories point to files—the information in your document. Your **public_html** directory is a sub-directory of your home directory. This is where you will publish the Web page files that you create in this class.

In the following exercise, you will create a sub-directory of your UNIX home directory named **public_html**.

Exercise 1: Preparing your directory

1. In the Applications folder, double-click the **SSH Secure Shell Client** icon. In the dialog box that appears, type your UDeI Net ID and click **Connect**. If you see a question about saving your “host key” to the local database, answer **No**. In the next dialog box, type your password and click **OK**.
2. Create your **public_html** directory and make it executable and readable by others: At the UNIX % prompt, type

```
source /www/htdocs/learn/usered/html-setup
```

Note: there is a space after the word “source.”

3. Type

```
exit
```

at the UNIX (%) prompt.

4. From the **File** menu, select

```
Exit
```

to quit the SSH Secure Shell Client.

Using Composer to create a Web page

In the following exercises, you will create a Web page using the buttons and menu options available in Composer.

Exercise 2: Beginning your Web page


Note: When you create your Web page, you add or change text in the file using the mouse and keyboard. When you start typing, that text becomes part of your Web page. If you want to delete text, highlight the text and press the DELETE or BACK-SPACE keys. If you want to replace text, highlight it and type the new text. You can also copy text from other applications and paste the text into Composer.

1. Open Mozilla Composer.

From the **Start** menu, select **All Programs** and then the **Mozilla 1.7** folder. Click **Mozilla 1.7 Navigator**. When the Navigator window appears, select the **Window** menu, then choose **Composer**.

continued on next page

continued from previous page

2. From the Composer **View** menu, select **Show/Hide** and make sure the following toolbars are checked: **Composition, Format, Edit Mode** and **Status Bar**.
3. From the Composer **Edit** menu, select **Preferences**. Click the plus sign next to **Composer** and select **Toolbars**. Make sure every box in the window is checked and then click **OK**.
4. To begin your page, from the drop-down list  on the **Format** toolbar, choose **Heading 1**. Type


Publishing Web Pages

then press the ENTER key. Notice that the drop-down list returns to **Body Text**.

5. From the drop-down list on the **Format** toolbar, choose **Paragraph**. Type the following paragraph. Do not indent or press the ENTER key at the end of each line.


To publish a Web page, first create an HTML file on your computer. Then, send a copy of the file to the Web server (Copland or www). Be sure to keep the information on your Web page current and keep your audience in mind when designing your page.

Press the ENTER key.

6. Highlight the words **your audience** then click the **Italics** button  on the **Format** toolbar.
7. Click below paragraph you just added and from the drop-down list on the **Format** toolbar, choose **Paragraph**. Type the following line:

The ideal Web document:

then press the ENTER key.

8. Click the **Bulleted List** button  and type the following items (press the ENTER key at the end of each line). Note that each time you press the ENTER key, Composer inserts a bullet.

Is attractively designed.
Communicates effectively.
Leads easily to related information.

Be sure to press the ENTER key at the end of the third line.

9. Click the **Bulleted List** button to turn off the option.

continued on next page

continued from previous page

10. Press the ENTER key, then choose **Heading 2** from the drop-down list on the **Format** toolbar. Type


`Where do I publish my Web page?`

and press the ENTER key.

11. From the drop-down list on the **Format** toolbar, choose **Paragraph**. Type the following paragraph (do not press the ENTER key at the end of each line):

`When you publish a Web page on a UD server,
its location depends on the type of document it is.
Personal pages are published in your public_html
directory on Copland; official University
documents are published on www.`

Press the ENTER key.

12. Click the **Insert Table** button , then complete the **Insert Table** Properties box by including the following information:

- Enter **2** for the number of rows and columns.
- Change the **Width** to **50** percent of the window.
- Leave the **Border** set at **1pixel**.

Click **OK**.

13. When the table has been inserted on your page, click the **Table** button again and from the **Caption** drop-down box, select **Above Table**.
14. Click **OK**. Notice that the top selection handle is now well above the table. The area between the top of the table and the handle is where you will type the caption.
15. Type the following information in the table. Type the caption first. Then click in the upper-left table cell and type the text. Use the Tab key to move among table cells. As you type, the cell size adjusts automatically to accommodate text.

What is the URL of My Web Page?

Copland	http://udel.edu/~your_username/filename.html
www	http://www.udel.edu/directory_path/filename.html

You can modify the appearance of a table in the **Table Properties** box. Click in any cell in the table, choose the **Format** menu, then select **Table Cell Properties**. Click a tab—**Table** or **Cell**—to reformat all or part of the table.

continued on next page

continued from previous page



16. Click the **Spell** button on the **Composition** toolbar. Correct any spelling errors, if necessary. Click the **Close** button when you finish.



17. Click the **Save** button. When the **Page Title** box appears, type a descriptive title, such as *Publishing Documents on the World Wide Web*. You will then see the **Save As** dialog box. Click the down-arrow next to the **Save In:** box. Click **(C:)**, then double-click **Scratch**. Name the file **webpage.html** and click **Save**.

18. Click **OK**.

Previewing your Web page

Before you transfer your document to the Web server, you can preview (browse) it in Navigator. This is especially useful for checking special formatting, links and images you have included.

Exercise 3: Previewing your file



1. Click the **Browse** button on the **Composition** toolbar. If you have not saved the file recently, Composer will prompt you to do so.
 2. When you finish previewing your Web page, click the **X** in the upper-right corner of the Navigator window. Remember, you cannot edit your document in the browser window.
-

Naming your home page

Most Web sites contain multiple files that are linked to a “home page” (your main or introductory page). The most efficient way to handle a home page is to give it the name

index.html

The advantage to naming your home page **index.html** is that most browsers will display the **index.html** file if no specific HTML filename is given. Thus, people searching for your personal Web page on the “udel.edu” Web server only have to know your UDeI Net ID to be able to find your files, and people on the University’s central Web server would only have to know the name of the directory in which your files reside. They do not have to remember an HTML filename to get to your information.

Creating links

The process for creating links is the same whether you are linking to a UD Web page or to Web pages around the world. First you must know the URL (Uniform Resource Locator) or address for the page you wish to link to. In the next exercise, you will create two links: one to the UD Home Page and one that will generate a mail window addressed to your e-mail account.

Exercise 4: Creating links

1. Position the cursor below the table. If **Paragraph** is not showing in the drop-down list on the **Format** toolbar, click to select it.

2. Click the Link button  on the **Composition** toolbar.

3. In the **Enter text to display for the link** box, type

`UD Home Page`

4. In the **Link Location** box, type

`http://www.udel.edu/`

Click **OK**.

5. Position the cursor below the **UD Home Page** link and from the drop-down list on the **Format** toolbar, choose **Paragraph**.

6. Click the Link button  on the **Composition** toolbar.

7. In the **Enter text to display for the link** box, type

`Questions?`

In the **Link Location** box, type

`mailto:your_UDelNet_ID@udel.edu`

This link provides anyone viewing your page with a way to send you an e-mail message. **Note:** Because of security issues, mailto links will not work in UD computing sites.


8. Click **OK**.
9. Browse your page and check that your link works correctly.

Including graphics

Before you include a graphic, make sure that you are not violating any copyright laws. You may use the graphics available from the UD IdeaCenter <www.udel.edu/ideacenter/>, although there are some restrictions for student Web pages. Guidelines for students can be found in the “Policy for Student Use of Computer Resources for Home Pages” <www.udel.edu/webstart/stuorg/student.resource.html>. Information on fair use guidelines for educational multimedia can be found at <www.udel.edu/present/instructions/copyright/>.

In the next exercise, you will add an image found at <www.udel.edu/learn/cool.gif>. Then you will create a button and link it to return to the UD Home page.

Exercise 5: Adding graphics

1. To insert a graphic, first click the mouse where you want the image to appear. Then, click the **Image** icon .

2. In the **Image Location** box, type the URL of the image:

`http://www.udel.edu/learn/cool.gif`

Note: If you are adding an image from your hard disk to your Web page, be sure to save your Web page before adding the image. Then in the **Image Properties box**, check the box beside **URL is relative to page location**. This is necessary to make the references to the images correct once you copy your Web page and its images to the Web server.

3. Provide alternative text for those using non-graphical browsers. Click the radio button next to **Alternate Text** and type the following in the box:

`cool character`

Click **OK**.

4. You can also create linked images and buttons to enhance your page. Move your cursor in front of the UD Home Page link. Click the **Image** icon then type the following URL in the **Image Location** box:

`http://www.udel.edu/images/Logos/hm.gif`

5. Click the radio button next to **Alternate Text** and type the following in the box:

`University of Delaware logo`

6. Click the **Link** tab. Type the URL for the UD home page: (<http://www.udel.edu>).

continued on next page

continued from previous page

7. Click the **Appearance** tab. Set (or reset) the solid border to **0** pixels. Click **OK**.
 8. Browse your page. (You will be asked to save the page first.)
-

Adding features to your page

Composer provides buttons and menu options for adding features to your Web page. For instance, you can select a background color from the **Page Colors and Background** window. It is important to think of the impact of the color or feature on the audience and to remember that not all browsers display colors in exactly the same way.

You should include the month and date you last updated your file at the bottom of your page and be sure to keep the information in your document current.

Exercise 6: Using the features available in Composer

1. Experiment with adding a background color to your page and changing the text color. To alter the color scheme of your page, from the **Format** menu, choose **Page Colors and Background**.
2. In the **Page Colors and Background** window, click the radio button next to **Use Custom Colors**. Click one of the color buttons (Normal text, Link text, Active link text, Visited link text or Background), then select a color. Click **OK**.
3. Type the following URL in the **Background Image** box:

`http://www.udel.edu/learn/background.jpg`

4. Click **OK**.

When you use an image for your background, the image overrides any background color you have set. If for some reason the background image can not be displayed, the background color will appear. **Note:** Color preferences (and other elements) can be set by the user to override those set in a Web page.

5. Position the cursor on the line below the “Cool” image. Click the **H. Line** button on the **Composition** toolbar to add a horizontal rule.
6. Press the ENTER key.
7. Position the cursor on the line below the horizontal line. Add the phrase

`Last updated September 2004`

at the bottom of your page.

continued on next page

continued from previous page

8. Click the **Save** button.
 9. Browse your page.
-

Viewing the HTML source

All Web pages are constructed with HTML codes. When you create a Web page using Mozilla Composer, you don't normally see these codes. Composer creates them for you. Sometimes, it is useful to view the HTML codes. Since HTML codes are the "source" of the web page that you see, this is often referred to as "viewing the source." In the next exercise, you will view the source of your Web page in Composer.

Exercise 7: Viewing your HTML source

1. From the tabs at the bottom of the Composer page, choose **<HTML> Source**.
 2. The **<HTML> Source** (HTML file) appears in the window. Notice the information in the brackets (<>). These are HTML tags. Appendix B describes the most common HTML tags and their uses.
 3. Click the **Normal** tab at the bottom of the page to return to the Composer editing window.
-

Validating your page's HTML

An important step before you transfer any pages to the Web server is to make sure the HTML for your page contains no errors. This will be especially important when you are transferring multiple-page Web sites with links among the pages. In the next exercise, you will use the Composer Validation tool to make sure your HTML is valid.

Exercise 8: Validating HTML

1. From the Composer **Tools** menu, select **Validate HTML**. This brings up a new Navigator page for the World Wide Web Consortium's (W3C) Markup Validation Service.
2. Click the **Browse** button and locate your **webpage.html** file. Click **Open**.
3. When the pathname for the file appears in the **Validate** page's **File** box, click the **Validate this file** button. If the HTML is valid, you will receive a message saying that the file was checked and is valid. If not, you will receive a list of errors with explanations of what the error means.

Publishing your page

When you save your Web page in Composer, it writes the HTML source code to a file with the extension *.html*. When you are satisfied with the appearance of your page, you are ready to publish it. You now have to transfer a copy of the new files to your `public_html` directory on Copland. When you save your file, Composer also saves the graphics (*.gif* or *.jpg* file) in the same location. When you transfer your page, you also need to transfer any graphics files you have added to your page. Remember that millions of people can view the page once it is on the Web.

Using the Secure Shell File Transfer Program

The Secure Shell File Transfer window allows you to manage files on your computer and in your UD server directory, including Web pages, graphics, documents, and more. With the file transfer program you will be able to:

- * View any directory or file on your computer and on the server.
- * Create, rename, move, and delete folders and files on your computer or within your server directory.
- * Transfer any file or folder between your computer and your directory on the server.
- * Change the permissions of files in your server directory.

How to open the SSH File Transfer window

Exercise 9: Opening the SSH File Transfer window

The SSH File Transfer window allows you to transfer files from your desktop computer to a remote computer and from a remote computer to your desktop computer. You can transfer text files, graphics files, and files created by applications such as Microsoft Word.

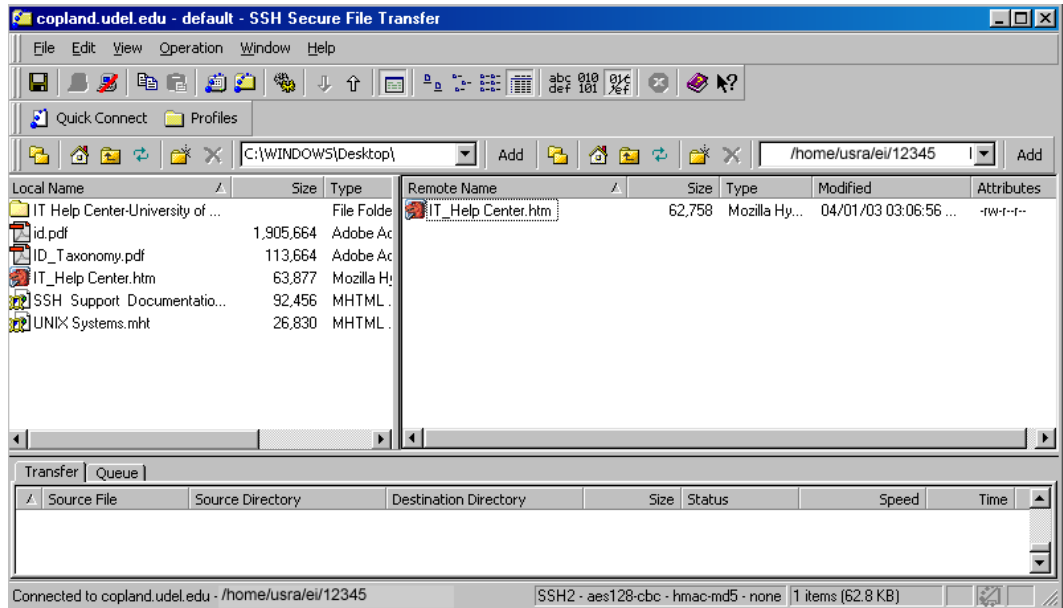
1. In the Applications folder, double-click the **SSH Secure Shell Client** icon. In the dialog box that appears, type your UDeI Net ID and click **Connect**. If you see a question about saving your “host key” to the local database, answer **No**. In the next dialog box, type your password and click **OK**.
2. On the SSH toolbar, click the **File Transfer Window** button:



You will see a window like the one on the next page:

continued on next page

continued from previous page



Local Name

The Local Name pane on the left side of the window lists the files and folders on your computer and enables navigation very similar to that in Windows Explorer. Files can be dragged from your computer (Local Name) to the server (Remote Name) or from the server to your computer.

Remote Name

This area displays directories and files in your home directory on the UNIX server. You may also view other server directories and files as needed.

File Transfer Status and History

The status of each uploaded or downloaded file will appear on the Transfer tab at the bottom of the window. All actions are displayed in an exportable history list. The Queue tab displays files ready for upload or download.

How to transfer files using the SSH File Transfer program

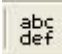


Exercise 10: Transferring files to your Web directory

1. In the **Remote Name** window pane, change to the **public_html** directory by double-clicking the directory name (folder).
2. Select the format of the file you want to transfer:



continued on next page

continued from previous page

- Click  (ASCII) for files that contain only text or program source code. Examples are files that end with .html, .htm, and .txt.
 - Click  (Binary) for files that contain formatting codes such as files produced by word processing, spreadsheet, or graphics programs. Examples are Microsoft Word, Microsoft Excel, .gif, and .jpg files.
 - Click  (Auto) if you are unsure of the format of the files.
3. From the **Scratch** folder in the **Local Name** window pane, select the **webpage.html** file by clicking the file name.
 4. Drag the highlighted file to the **public_html** directory in the right window pane.

Note: To transfer files from the server directory to your local computer, follow the directions above, dragging the selected files to the left window pane.

How to delete files or folders using the SSH File Transfer program

- Select a file or folder you wish to delete from either the **Local Name** or **Remote Name** window pane.
- From the **Operation** menu, select **Delete** to delete the file or folder. Alternatively, you can click the red **X** on the File bar.
- A **Confirm Delete** dialog box appears, allowing you to confirm if you really want to delete the selected files or folders. Click **Yes** to delete the selected items or **Cancel** to keep them.

Once you have transferred your Composer page to the Copland Web server, you will want to browse it in Mozilla Navigator to see how it will look to the world.

Exercise 11: Browsing your published home page

1. Open Navigator by selecting it from the **Window** menu in the Composer window.
2. In the **Location** box, type the URL of your new home page. **Note:** Do not include **www** or **public_html** as part of the address.

`http://udel.edu/~UDelNet_ID/filename`

To change your Web page, you can edit the copy on your local computer and then repeat the publishing steps using SSH File Transfer. If you change personal computers, you can open the file in Mozilla and choose **Edit Page** from the Mozilla Navigator **File** menu to edit the page in Composer.

Starting with another page as a template

It is easy to use Mozilla Composer to copy a Web page you like and then use the HTML as a basis for developing your own page. You can use University of Delaware template files (found at <http://www.udel.edu/ideacenter/>) or a page that already exists on the Web. Follow these steps to use another page as the model for your own page.

1. While viewing the page you want to use as a template, from the Navigator **File** menu, select **Edit Page**.
2. Modify the content of the page using word processing techniques or the menu options and format buttons. For example, if you want to delete text, highlight the text and press the DELETE or BACKSPACE key. If you want to replace text, highlight the text and type the new text. Or add a table using the **Table** button.
3. To insert a graphic, first click the mouse at the location where you want the image to appear. Then either choose **Image** from the **Insert** pull-down menu or click the **Image** button. Supply the name of the graphic file and provide alternative text for those using nongraphical browsers.
4. To preview your page, click the **Browse** button on the Composition toolbar. Before you can preview the document, you must save a copy on your local system. Composer will prompt you to save the document.
5. Follow the directions in this document to transfer the page to your public_html directory.

You can find some templates to help you begin Web design at

<http://www.udel.edu/ideacenter/>

Appendix A—Converting a Microsoft Word document to HTML

You can use Microsoft Word to convert existing documents to HTML format. Use **Save as Web Page** from the Microsoft Word **File** menu; then use Secure Shell File Transfer to move your documents to the Web. Remember, layout differences may exist after you convert a document.

1. Open Word.
2. When the application opens, from the **File** menu, choose **Open**. Then, from the list of available documents, double-click the document you wish to convert.

Note: When the document opens, familiarize yourself with the layout. The converted document will not look exactly like the original.

3. From the **File** menu, choose **Save as Web Page**.

When you save your file in Word 2003, be sure to complete the following steps before uploading the files.

- a. In the **Save As** dialog box, click the **Tools** icon and choose **Web Options...**
- b. On the **Browsers** tab, select **Microsoft Internet Explorer 4.0, Netscape Navigator 4.0, or later** from the Target Browsers pull-down list. Then select **Disable features not supported by these browsers**.

(**Note:** If the box is checked that says “Save new Web Pages as Single File Web Pages,” uncheck it.)

- c. Click **OK**.

The file name should appear in the **File Name** box. If the **Save As Type** box does not say **Web Page (*.htm, *.html)**, use the pull-down arrow to select it.

4. Click **Save**.

Note: When you convert a document to HTML format, you retain the original document as a separate file. The new HTML file has the same file name but a different file extension (.htm).

5. When the conversion is complete, the converted file (*filename.htm*) appears in the window. View the HTML source code file by clicking the **View** menu and selecting **HTML Source**.
6. If you have graphics in your document, scroll through the HTML source code to find the reference to the image. Word names images consecutively (Image1.gif, Image2.gif, etc.). When you upload your page, be sure to include these image files.
7. Return to your file by clicking the **X** in the HTML Source window.

8. You can modify the HTML file using the Microsoft Word formatting buttons and menu options and the Web toolbar options (insert hyperlink, insert image). When you are satisfied with the appearance of your page, be sure to save it.
9. Close your document by selecting the **File** menu then choosing **Close**. Click the **Close** button (the **X** in the upper-right corner) to close Word.
10. Open your HTML file in a WWW browser to see how it will appear.
11. Next, you must transfer your files to your Web directory using the SSH File Transfer program.
12. Once you have uploaded your page, view it in Mozilla to see how it will appear to the world.
13. Open Mozilla Navigator. In the **Location** box, type the address (URL) of your page. If you published in your **public_html** directory, the URL will be **http://udel.edu/~your_UDelNet_ID/filename.htm**. If you published in an official University directory, the URL will be **http://www.udel.edu/directory_path/ filename.htm**.

Appendix B—Viewing the elements of your Web page

Hypertext markup language (HTML) is the language used to create documents for the World Wide Web. To view the source of a Composer document, choose the HTML Source menu item from the View menu. **Tags** are used to label the elements of a Web page. Tags come in pairs, one before and one after the text you want to act on.

`<tag name>text</tag name>`

Each web page must have certain elements; some of them are listed below. For example, the code for creating boldface text is ``; so, to make a word boldface, the code would be `word`. The following list describes some commonly used html tags.

<code><html> </html></code>	Placed at the very beginning and end of a document.
<code><head> </head></code>	Placed after the <code><html></code> tag; The “head” contains general information about the document. Use <code></head></code> tag at the close of the “head” section.
<code><title> </title></code>	The title for your entire Web page. It appears in the blue area at the top of the browser and the code is placed between the head tags.
<code><body> </body></code>	Placed after the <code></head></code> tag and before the final <code></html></code> tag. Contains the information that appears on your web page in a browser window.
<code><h#> </h#></code>	There are 6 levels of headings, <code><h1></code> to <code><h6></code> . <code><h1></code> often uses the same text as the title. Headings are placed around text for organizational purposes:
<code><h1>heading level 1</h1></code>	most important level
<code><h2>heading level 2</h2></code>	
<code><h3>heading level 3</h3></code>	
<code><h4>heading level 4</h4></code>	
<code><h5>heading level 5</h5></code>	
<code><h6>heading level 6</h6></code>	least important level
<code><pre> </pre></code>	Indicates that you want the text between these tags to display as preformatted text—exactly as you designed it.
<code> </code>	Bold
<code><i> </i></code>	Italic
<code><tt> </tt></code>	Typewriter spacing (monospaced)
<code><blockquote> </blockquote></code>	Sets off a long quotation

<pre> </pre>	<p>Unordered, bulleted list (without numbers) List item</p>
<pre><ul type=x> </pre>	<p><i>x</i> can be “disc” (round solid bullet), “circle” (round hollow bullet) or “square” (square hollow bullet).</p>
<pre> </pre>	<p>Ordered list (with numbers) List item</p>
<pre><dl> <dt></dt> <dd></dd> <dt></dt> <dd></dd> </dl></pre>	<p>Definition list (a term followed by a definition) Definition term Definition</p>
<pre><table></table> <tr></tr> <th></th> <td></td> <caption></caption></pre>	<p>Begin and end a table. You must add a “border” attribute to have a border displayed (table border=1). Define a table row. Label the rows or columns or both. Include data in the table. Give the table a caption.</p>
<pre><p></p></pre>	<p>Insert a paragraph break.</p>
<pre><hr /></pre>	<p>Insert a horizontal rule.</p>
<pre>
</pre>	<p>Insert a line break.</p>
<pre>text</pre>	<p>A hypertext reference for creating a link.</p>
<pre></pre>	<p>The code for including graphics in a Web page.</p>