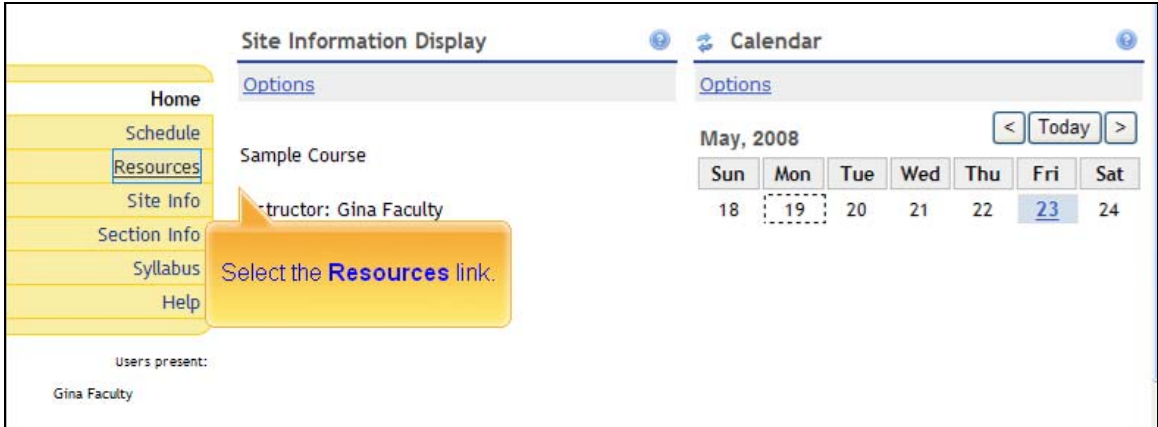


Creating a Resources Link to an Existing Web Page

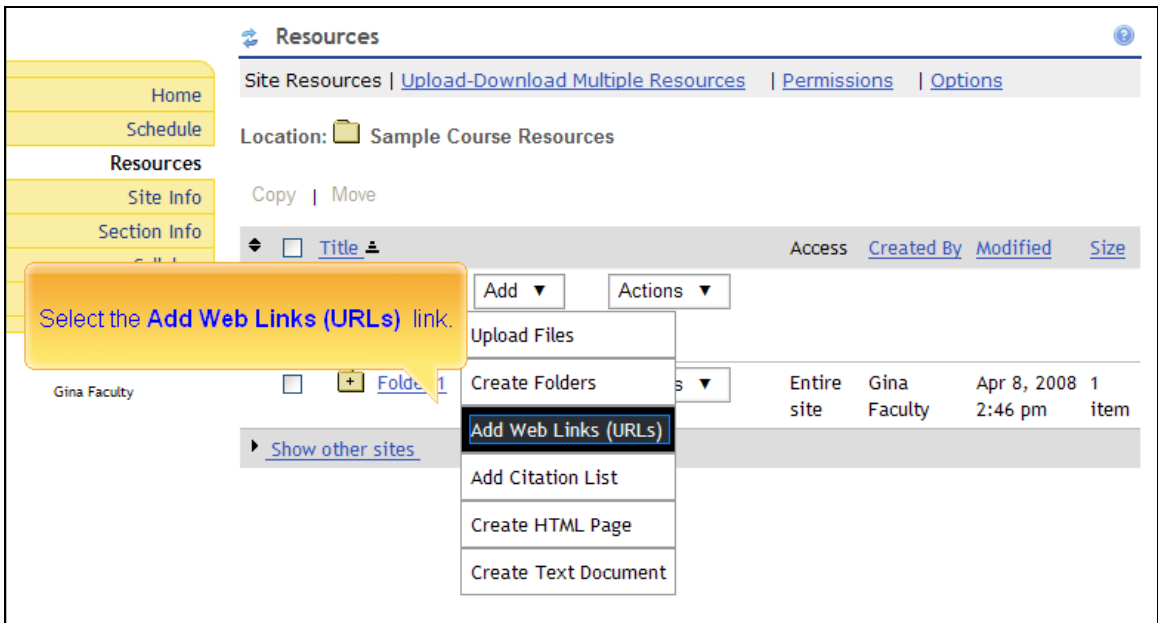
1. Click the Resources tool in the menubar.



2. Click the Add ▼ button on the Resources page.

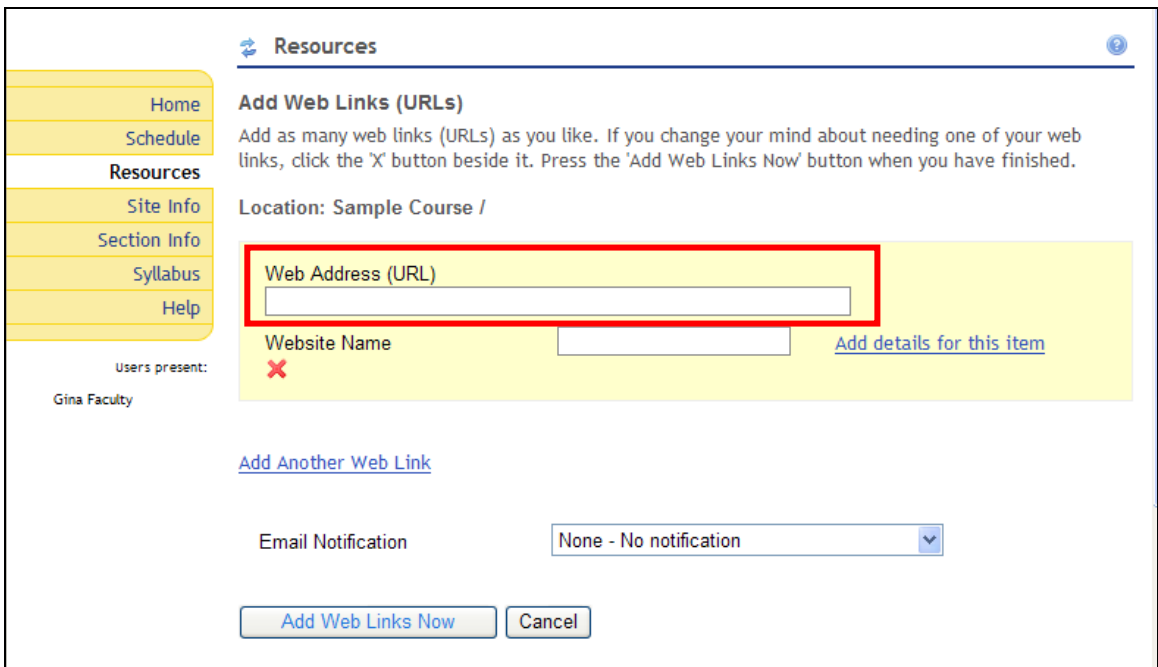


3. Select Add Web Links (URLs).



4. Type the Web Address (URL) of the page you want your students to visit online.

Note: It is not a good idea to enter the URL of a course Resources page into this field. If you do choose to link to a Resources page in this way, you will need to recreate the link each time you transfer content to a new Sakai site..



5. Type a descriptive Website Name. Click Add Web Links Now.

Resources

Add Web Links (URLs)
Add as many web links (URLs) as you like. If you change your mind about needing one of your web links, click the 'X' button beside it. Press the 'Add Web Links Now' button when you have finished.

Location: Sample Course /

Web Address (URL)

Website Name [Add details for this item](#)

6. The new link will appear in Resources. Click the icon or title to test it.

Resources

Site Resources | [Upload-Download Multiple Resources](#) | [Permissions](#) | [Options](#)

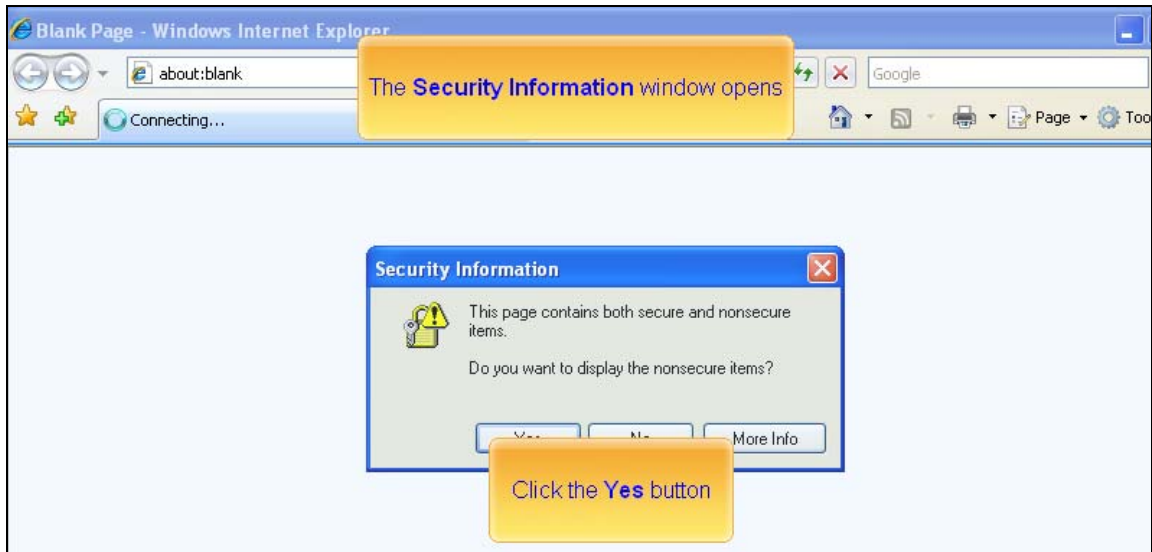
Location: Sample Course Resources

Copy | Remove | Move

<input type="checkbox"/>	Title	Access	Created By	Modified	Size
<input type="checkbox"/>	Sample Course Resources <input type="button" value="Add"/> <input type="button" value="Actions"/>				
<input type="checkbox"/>	Folder 1 <input type="button" value="Add"/> <input type="button" value="Actions"/>	Entire site	Gina Faculty	Apr 8, 2008 2:46 pm	1 item
<input type="checkbox"/>	UD@Sakai Training <input type="button" value="Actions"/>	Entire site	Gina Faculty	May 19, 2008 3:19 pm	25 bytes

[Show other sites](#)

7. If you are using Internet Explorer a Security Information window may open. Click Yes to view the web page.



8. The web page will open in a new browser window or tab depending on your browser's settings.