

# Career Paths of Our Alumni, 2003 - 2012

*University of Delaware, Department of Medical Laboratory Sciences*

---

(all information is based on self-reported data of graduates)

## **Employers:**

**Alfred I. duPont Hospital for Children**, Wilmington, DE  
**American Red Cross**, Philadelphia, PA  
**AtlantiCare Regional Medical Center**, Atlantic City, NJ  
**Bayhealth Medical Center**, Dover, DE  
**Beebe Medical Center**, Lewes, DE  
**BioReference Laboratories**, Elmwood Park, NJ  
**Blood Bank of Delmarva**, Newark, DE  
**Brookhaven Memorial Hospital**, Patchogue, NY  
**Cape Regional Medical Center**, Cape May Court House, NJ  
**Central Pennsylvania Alliance Laboratory**, York, PA  
**Children's Hospital of Philadelphia**, Philadelphia, PA  
**Christiana Care Health Services**, Newark, DE  
**Crozer-Keystone Health System**, Upland, PA  
**Department of Veterans Affairs, Wilmington VA Medical Center**, Wilmington, DE  
**Duke University Hospital**, Durham, NC  
**Franklin Hospital – LIJ**, Valley Stream, NY  
**Genzyme Corporation**, Exton, PA  
**Halifax Medical Center**, Daytona Beach, FL  
**Hawaii Medical Center West**, Ewa Beach, HI  
**International Technidyne Corporation**, Edison, NJ  
**Intervet/Schering-Plough Animal Health**, Millsboro, DE  
**Jennersville Regional Hospital**, West Grove, PA  
**Johns Hopkins Hospital**, Baltimore, MD  
**Lancaster General Hospital**, Lancaster, PA  
**Magee Women's Hospital of UPMC**, Pittsburgh, PA  
**Main Line Health Laboratories, Lankenau Hospital**, Wynnewood, PA  
**Memorial Hospital of Salem County**, Salem, NJ  
**Memorial Sloan-Kettering Cancer Center**, New York, NY  
**Merck & Co., Inc.**, West Point, PA  
**New York Presbyterian Hospital/Columbia University Medical Center**, New York, NY  
**Newton Wellesley Hospital**, Newton, MA  
**QS Pharma**, Boothwyn, PA  
**Raritan Bay Medical Center**, Old Bridge, NJ  
**Reading Hospital and Medical Center**, Reading, PA  
**Reproductive Associates of Delaware**, Newark, DE  
**Saint Francis Hospital, Inc.**, Wilmington, DE  
**Shore Medical Center**, Somers Point, NJ  
**Siemens Medical Diagnostics**, Newark, DE  
**South Jersey Healthcare**, Vineland, NJ  
**St. Lukes Hospital & Health Network**, Bethlehem, PA  
**St. Peters University Hospital**, New Brunswick, NJ  
**Stony Brook University Hospital**, Stony Brook, NY  
**Summit Medical Group**, Berkeley Heights, NJ  
**Temple University Hospital**, Philadelphia, PA  
**Thomas Jefferson University Hospital**, Philadelphia, PA  
**University of Maryland Medical Center**, Baltimore, MD  
**University of Pennsylvania Health System**, Philadelphia, PA  
**Upper Chesapeake Health System**, Havre de Grace & Bel Air, MD  
**Virginia Commonwealth University Health System**, Richmond, VA  
**Washington Hospital Center**, Washington, DC

## **Areas of Employment**

**Andrology/Embryology**  
**Biosafety**  
**Bone Marrow Transplantation**  
**Cancer Research**  
**Cellular Immunology**  
**Clinical Chemistry**  
**Customer Support**  
**Fertility Clinic**  
**Flow Cytometry**  
**Forensic Science**  
**General Clinical Laboratory**  
**Hematology**  
**HLA Tissue Typing**  
**Human Genetics**  
**Immunochemistry**  
**Immunology**  
**Infectious Disease**  
**Microbiology**  
**Molecular Diagnostics**  
**Point of Care**  
**Quality Assurance**  
**Research & Development**  
**Sales**  
**Technical Consulting**  
**Technical Training**  
**Virology**

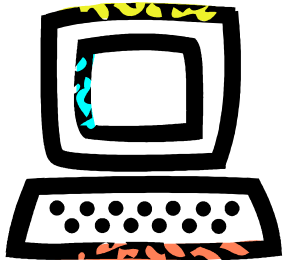
## **Other Professional Careers**

**Anesthesiologist**  
**Attorney**  
**Business Analyst**  
**Chief Financial Officer**  
**Clinical Information Analyst**  
**Dentist**  
**Director of Manufacturing**  
**Education**  
**Embryologist**  
**Law Enforcement**  
**Marketing Manager**  
**Nurse**  
**Optometrist**  
**Orthopedic Surgeon**  
**Pharmacist**  
**Physician**  
**Physician Assistant**  
**Senior Sales Representative**  
**Systems Analyst**

## **Graduate Schools Attended**

**American University of the Caribbean**, St. Maarten, N.A.  
**Arcadia University**, Newark, DE  
**George Washington University**, Washington, DC  
**Johns Hopkins University**, Baltimore, MD  
**Lake Erie College of Osteopathic Medicine**, Erie, PA  
**Medical College of Wisconsin**, Milwaukee, WI  
**NY College of Osteopathic Medicine**, Long Island, NY  
**Philadelphia Coll. of Osteopathic Medicine**, Phila., PA  
**Rensselaer Polytechnic Institute**, Troy, NY  
**Touro College of Osteopathic Medicine**, NY, NY  
**Univ. of Medicine and Dentistry of NJ**, Newark, NJ

The Bureau of Labor Statistics of the U.S. Department of Labor projects that the employment of clinical laboratory technicians and scientists will increase by 13% through the year 2020. In May 2010, the median salary was \$56,130 annually for clinical/medical laboratory scientists, based on geographic location.<sup>1</sup> Currently, there is a shortage in many parts of the country guaranteeing employment and higher salaries for graduates.



Check our web site (<http://www.udel.edu/mls/>) or give us a call (302-831-2849) to find out how you can begin your career as a medical laboratory scientist.

<sup>1</sup> <http://www.bls.gov/ooh/healthcare/medical-and-clinical-laboratory-technologists-and-technicians.htm>