

**I. HEALTH ASSESSMENT**  
**C. HEALTH STATUS**  
**5. COMMUNICABLE DISEASE**

**WHAT IS THE HEALTH STATUS OF DELAWARE RESIDENTS WITH RESPECT TO COMMUNICABLE (INFECTIOUS) DISEASE?**

**Communicable disease incidence rates in Delaware are comparable to national rates and rates in benchmark communities. However, most sexually transmitted disease rates in Delaware tend to be higher than benchmarks.**

- **New case rates of sexually transmitted disease (e.g., gonorrhea, and chlamydia) in Delaware are generally higher than national and most comparison community rates.**
  - Delaware's incidence of new cases of **gonorrhea** in 1997 (167.1 new cases per 100,000 persons) was 57 percent higher than the national rate (106.2 new cases per 100,000 persons) and most benchmark communities, despite declining rates of the disease in Delaware since 1995.
    - The incidence of new cases of gonorrhea in Delaware was 88 percent to 389 percent higher than most benchmarks.
    - Delaware's incidence of new gonorrhea cases was also 67 percent higher than the Healthy People 2000 objective of 100 cases per 100,000 persons.
    - Between 1993 and 1995, gonorrhea cases in Delaware increased to a high of 306.9 cases per 100,000 persons.
    - From 1995 to 1997, the number of gonorrhea cases across the U.S. declined, but Delaware's remained substantially higher than that of the nation.
  - Delaware's **chlamydia** rate is comparable to the national rate and higher than rates in comparison communities. Similar to the national trend, Delaware's rate has risen considerably since 1993.
    - In 1997, the incidence of chlamydia in Delaware (173.6 cases per 100,000 persons) was comparable to that of nation (171.2 cases per 100,000 persons) and between 11 percent and 47 percent higher than rates in neighboring states.
    - The incidence of chlamydia in Delaware rose considerably between 1993 and 1997, reaching a peak of 376.6 cases per 100,000 persons in 1995. Although nationally,

chlamydia rates also rose, the relative increase in incidence rates in Delaware was far greater than nationally.

- Delaware’s **syphilis rate** in 1997 (2.7 cases per 100,000 persons) was slightly lower than the national rate (2.9 cases per 100,000 persons) the Healthy People 2000 objective and Maryland, but significantly higher than the majority of benchmark communities.
  - The incidence of syphilis in Delaware was seven percent lower than the national rate and 85 percent lower than Maryland’s rate (17.5 cases per 100,000 persons). However, Delaware’s rate was significantly higher than other benchmark communities.
  - In 1997, Delaware’s syphilis rate was 33 percent below the Healthy People 2000 objective of 4.0 cases per 100,000 persons.
  - Except for 1996, the annual incidence of syphilis declined in Delaware between 1993 and 1997.
- **Despite a decline in newly diagnosed cases of AIDS in Delaware between 1993 and 1997, Delaware experiences a high prevalence rate of persons living with AIDS relative to the nation and several comparison communities.**
  - In 1997, the prevalence of **AIDS** in Delaware was 133.6 cases per 100,000 persons, a rate 36 percent above the U.S. (98.4 cases per 100,000 persons), 81 percent above Pennsylvania’s rate (73.8 cases per 100,000 persons), and 115 percent above the rate in Washington State (62.0 cases per 100,000 persons). However, fewer Delaware residents were living with AIDS than residents of Maryland (159.9 cases per 100,000 persons) and New Jersey (163.2 cases per 100,000 persons).

**TECHNICAL NOTE**

*When possible, we examine both incidence and prevalence of a disease in order to understand its full impact upon the community. Both prevalence and incidence are particularly important with reference to AIDS because of the high costs, monetary and otherwise, associated with AIDS.*
  - Data from 1993 to 1997 indicate that the annual number of **new AIDS cases** declined, from 374 new cases in 1993 to 231 new cases in 1997.
  - The percentage of individuals less than 13 years of age living with AIDS (0.7 percent) is slightly lower than the national rate and rates in Maryland and Pennsylvania.
- **Delaware residents die from pneumonia and influenza at a rate comparable to the nation and benchmark communities.**
  - In 1997, Delaware experienced a **pneumonia and influenza** mortality rate (31.0 deaths per 100,000 persons) four percent lower than the U.S. (32.3 deaths per 100,000 persons) and 15 percent lower than Pennsylvania (36.4 deaths per 100,000 persons), but between five percent and nine percent higher than other benchmark communities.

- **Delaware's tuberculosis case rate is lower than the national rate and most benchmark communities, but significantly above consensus-based standards.**
  - Delaware experienced a **tuberculosis** case rate (5.3 cases per 100,000 persons) 28 percent lower than the national rate (7.4 cases per 100,000 persons), between two percent and 40 percent lower than all benchmarks except Pennsylvania.
    - The **tuberculosis** rate in Delaware was 51 percent higher than the Healthy People 2000 objective of 3.5 new cases per 100,000 persons.
  - Similar to the U.S., **tuberculosis** cases in Delaware declined between 1995 and 1997 from 8.7 cases per 100,000 persons in 1995 to 7.4 cases per 100,000 persons in 1997.
- **Delaware's new mumps case rate is lower than the national rate and rates in comparison communities.**
  - Delaware had no new cases of mumps in 1997, placing it below the national rate (0.2 new cases per 100,000 persons) and rates in comparison communities.
- **Immunization rates for Delaware residents aged 19 to 35 months are comparable to state and national benchmarks but fall short of the Healthy People 2000 objective.**
  - The percentage of children in Delaware between 19 to 35 months old who were estimated to be vaccinated in 1997 (81 percent) was slightly higher than the U.S. rate (78 percent) and comparable to rates in other benchmark communities.
    - Delaware fell short of the Healthy People 2000 objective of immunizing 90 percent of children.

**Exhibit I-C-53:**

In general, Delaware performed comparably to benchmarks in the area of communicable disease. However, most sexually transmitted disease rates in Delaware were above the benchmark rates.

### Health Status Indicators

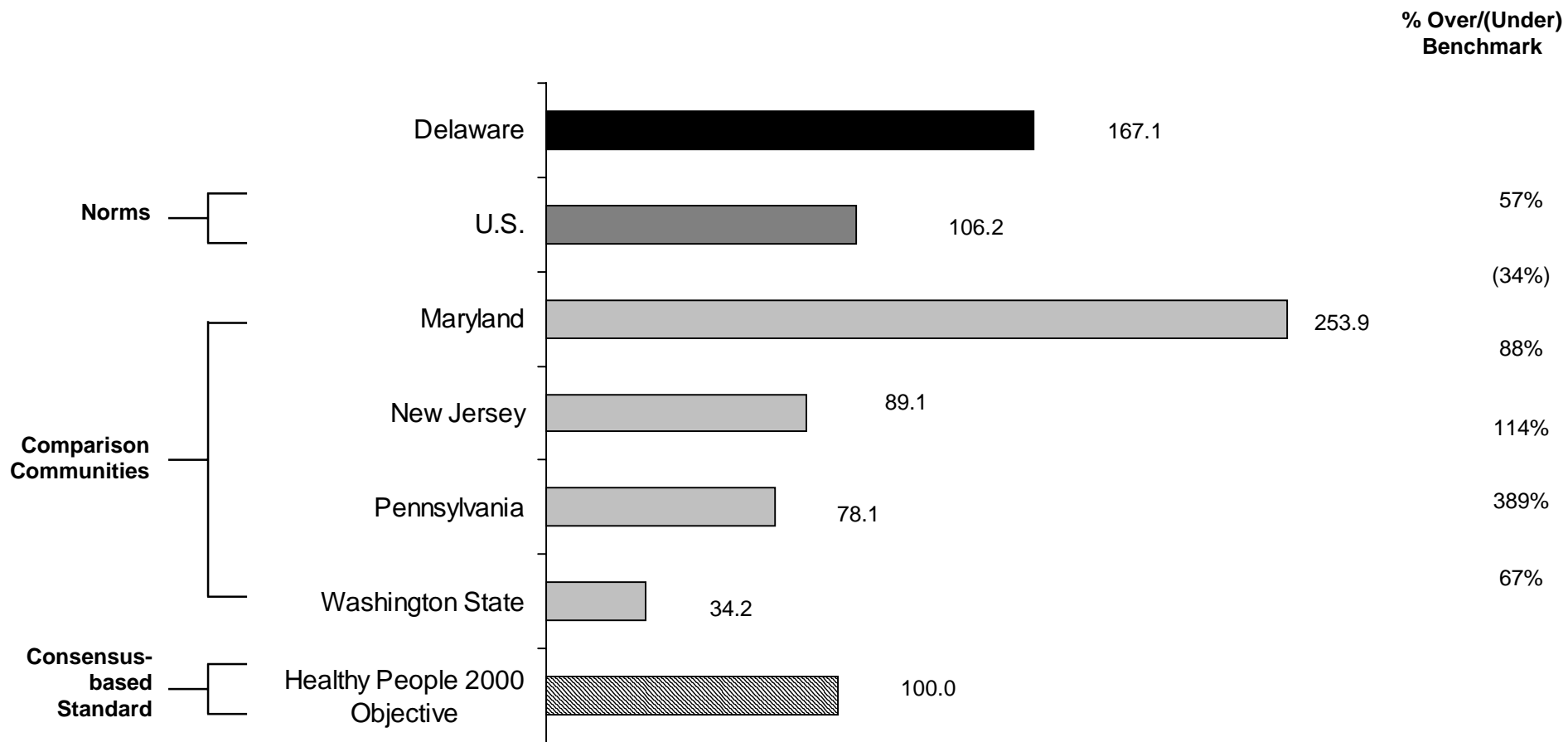
Communicable Disease	
Gonorrhea Incidence	—
Chlamydia Incidence	—
Syphilis Incidence	↔
AIDS Prevalence	—
Pneumonia and Influenza Mortality	↔
Tuberculosis Incidence	+
Mumps Incidence	+
Childhood Immunization Rate	↔

Performance Relative to Benchmarks:    + More Favorable    ↔ Comparable    — Less Favorable

HEALTH	RESOURCE	VALUE
Demographic	Socioeconomic	Health Status

**Exhibit I-C-54:** Delaware experienced more new cases of gonorrhea than most states, and the incidence rate was above the national norm and the Healthy People 2000 Objective.

**Gonorrhea Incidence Rates per 100,000 Persons  
1997**



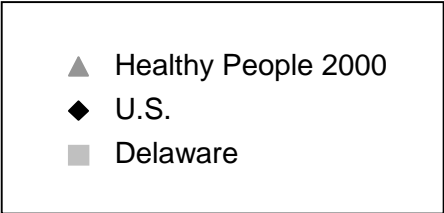
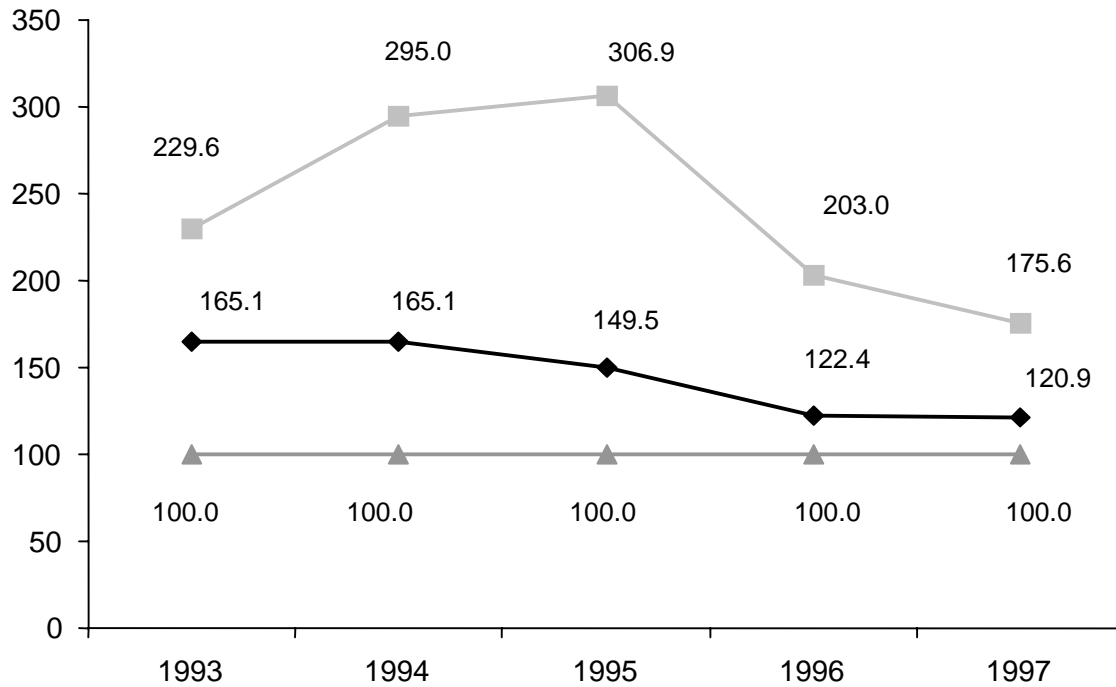
Sources: 1997 data, Centers for Disease Control and Prevention. Interactive MMWR Morbidity Tables. Table II Part I.

HEALTH	RESOURCE	VALUE
Demographic	Socioeconomic	Health Status

**Exhibit I-C-55:**

Gonorrhea incidence in Delaware peaked in 1995 and has decreased since then. However, Delaware's incidence remained higher than both the national experience and the Healthy People 2000 Objective.

**Gonorrhea Incidence Rates per 100,000 Persons  
1993 to 1997**



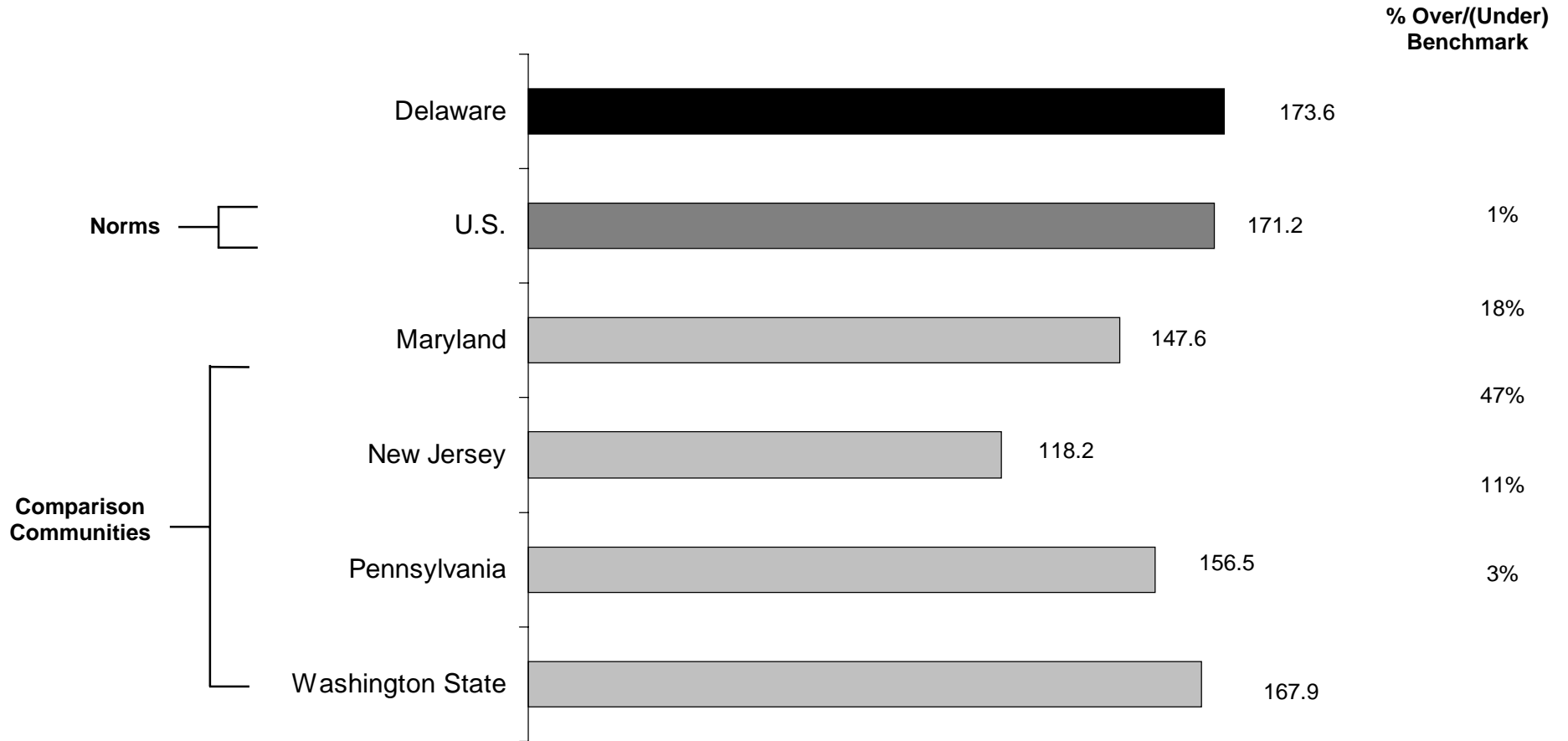
Sources: 1993 - 1997 data, Centers for Disease Control and Prevention. 1997 Sexually Transmitted Disease Surveillance Report.

HEALTH	RESOURCE	VALUE
Demographic	Socioeconomic	Health Status

**Exhibit I-C-56:**

The chlamydia incidence rate in Delaware was higher than the majority of benchmarks.

**Chlamydia Incidence Rates per 100,000 Persons  
1997**



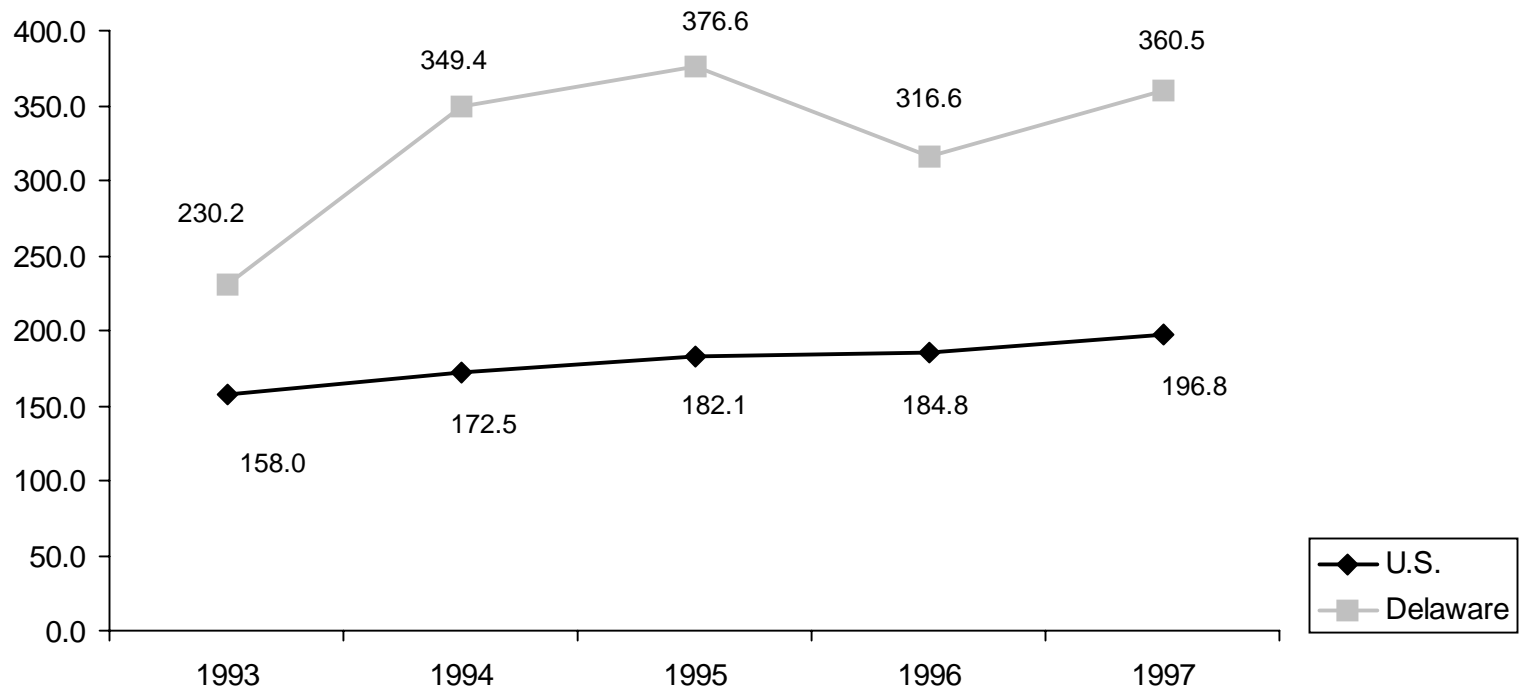
Sources: 1997 data, Centers for Disease Control and Prevention. Interactive MMWR Morbidity Tables. Table II Part I.

HEALTH	RESOURCE	VALUE
Demographic	Socioeconomic	Health Status

**Exhibit I-C-57:**

Similar to the national trend, the chlamydia rate in Delaware has risen since 1993.

**Chlamydia Incidence Rates per 100,000 Persons<sup>(a)</sup>  
1993 to 1997**



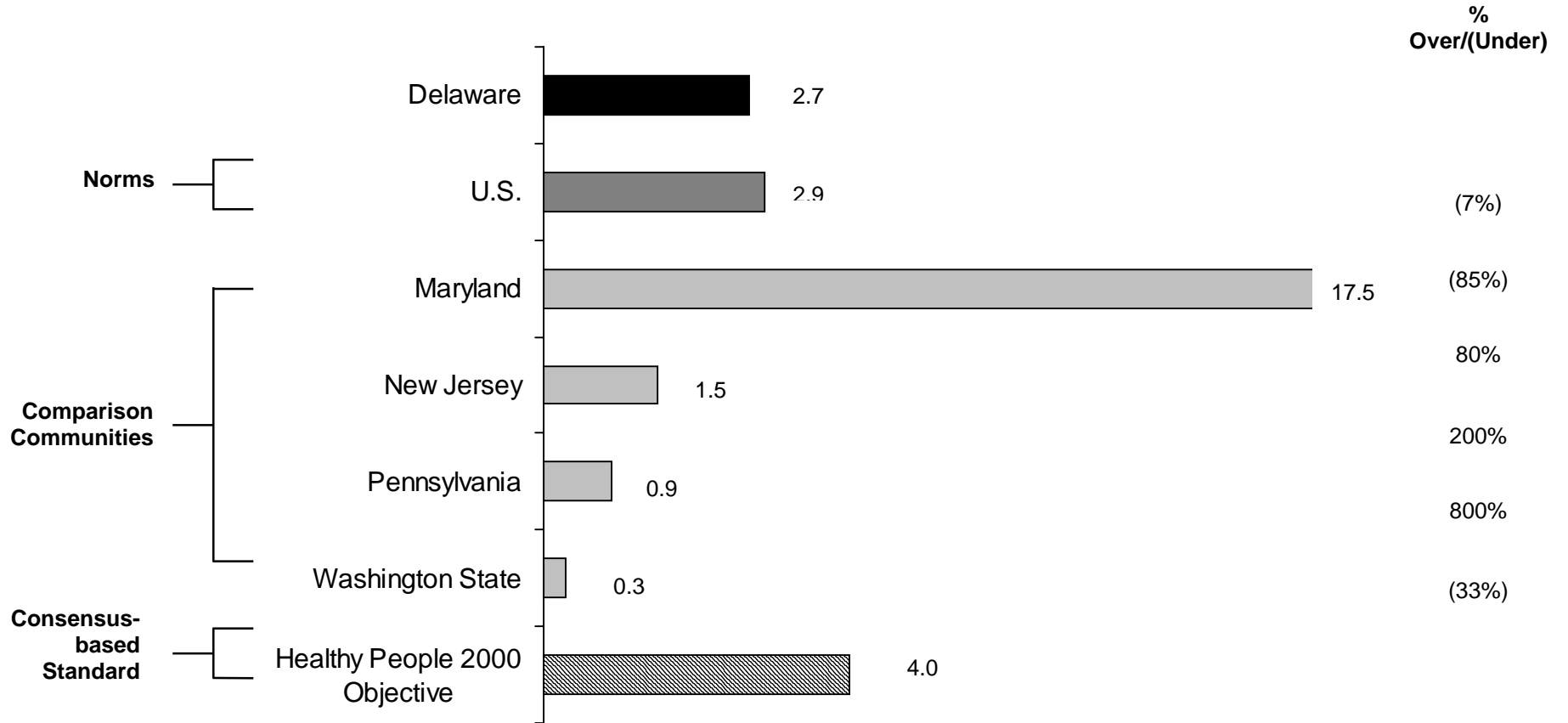
Sources: 1993 - 1997 data, Centers for Disease Control and Prevention. 1997 Sexually Transmitted Disease Surveillance Report.

HEALTH	RESOURCE	VALUE
Demographic	Socioeconomic	Health Status

**Exhibit I-C-58:**

Delaware experienced a syphilis case rate that fell within the range of benchmarks and is lower than the Healthy People 2000 Objective.

**Syphilis Incidence Rates per 100,000 Persons<sup>(a)</sup>  
1997**



Sources: 1997 data, Centers for Disease Control and Prevention. Interactive MMWR Morbidity Tables. Table II Part 2. 1997.

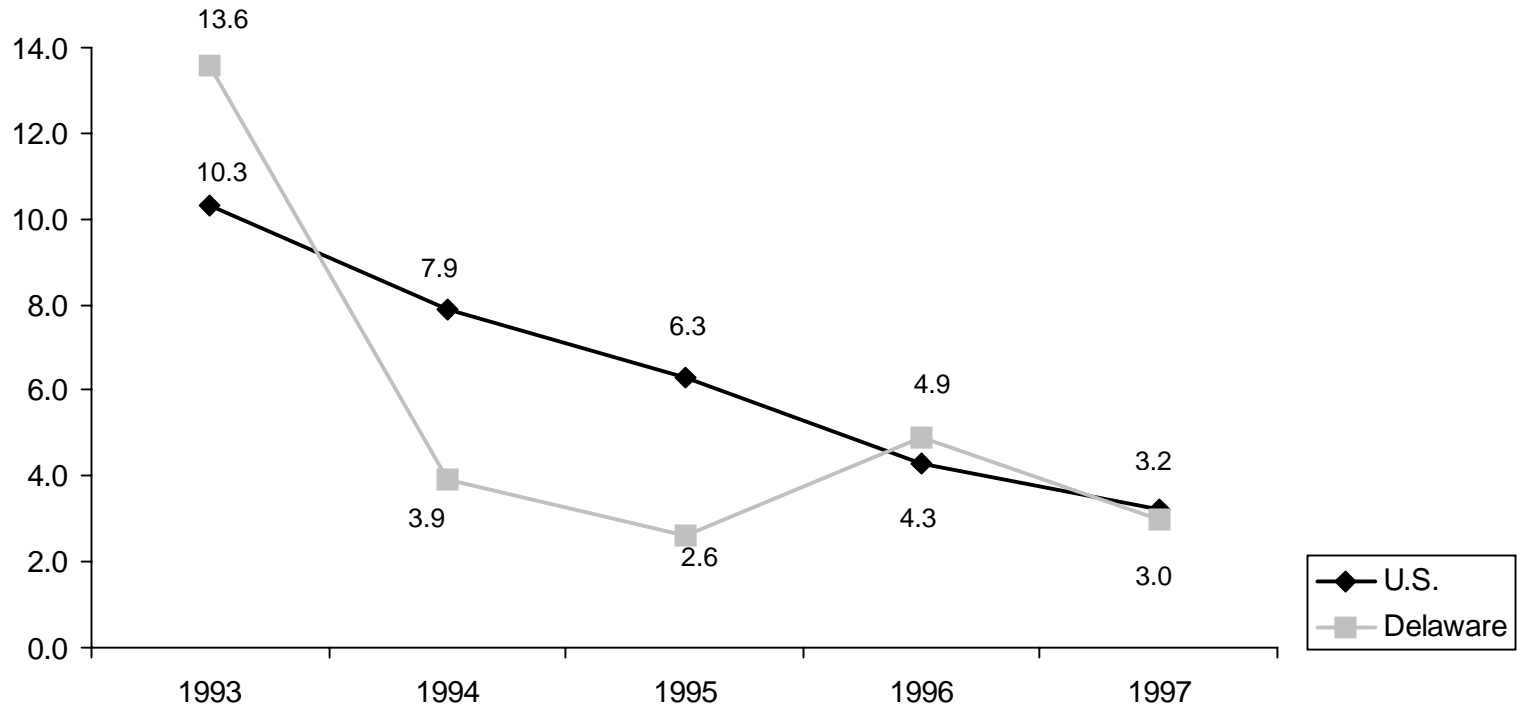
Notes: (a) Includes primary and secondary syphilis.

HEALTH	RESOURCE	VALUE
Demographic	Socioeconomic	Health Status

**Exhibit I-C-59:**

Except for 1996, the syphilis incidence rate in Delaware decreased, similar to the national trend.

**Syphilis Incidence Rates per 100,000 Persons<sup>(a)</sup>  
1993 to 1997**



Sources: 1997 data Centers for Disease Control and Prevention, Primary and Secondary Syphilis. United States 1997, MMWR; 47(24) 1998.

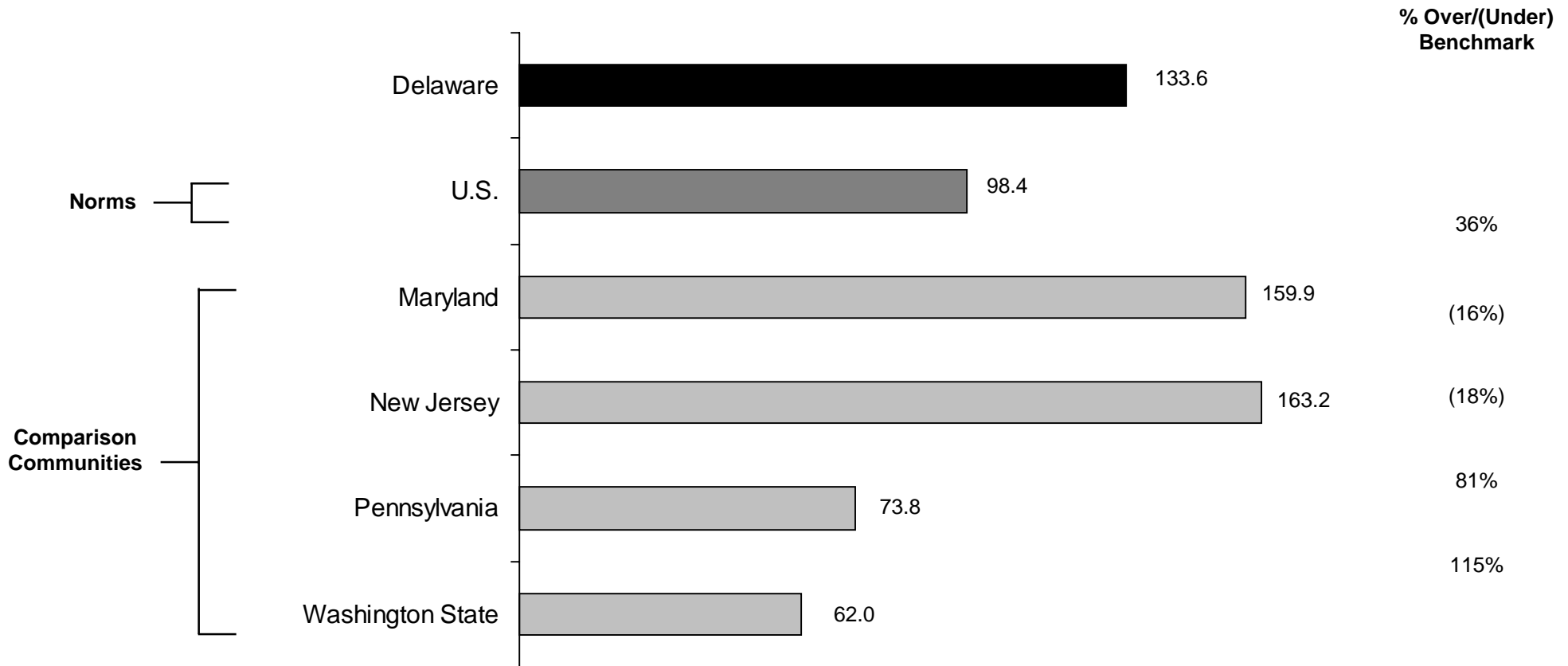
Notes: (a) Includes primary and secondary syphilis.

HEALTH	RESOURCE	VALUE
Demographic	Socioeconomic	Health Status

**Exhibit I-C-60:**

Delaware experienced a higher prevalence of AIDS cases compared to most benchmarks, but the rate was lower than two neighboring states.

**Prevalence of AIDS Cases per 100,000 Persons<sup>(a)</sup>  
1998**



Sources: 1998 data, Centers for Disease Control and Prevention. HIV/AIDS Surveillance Report, 1998.

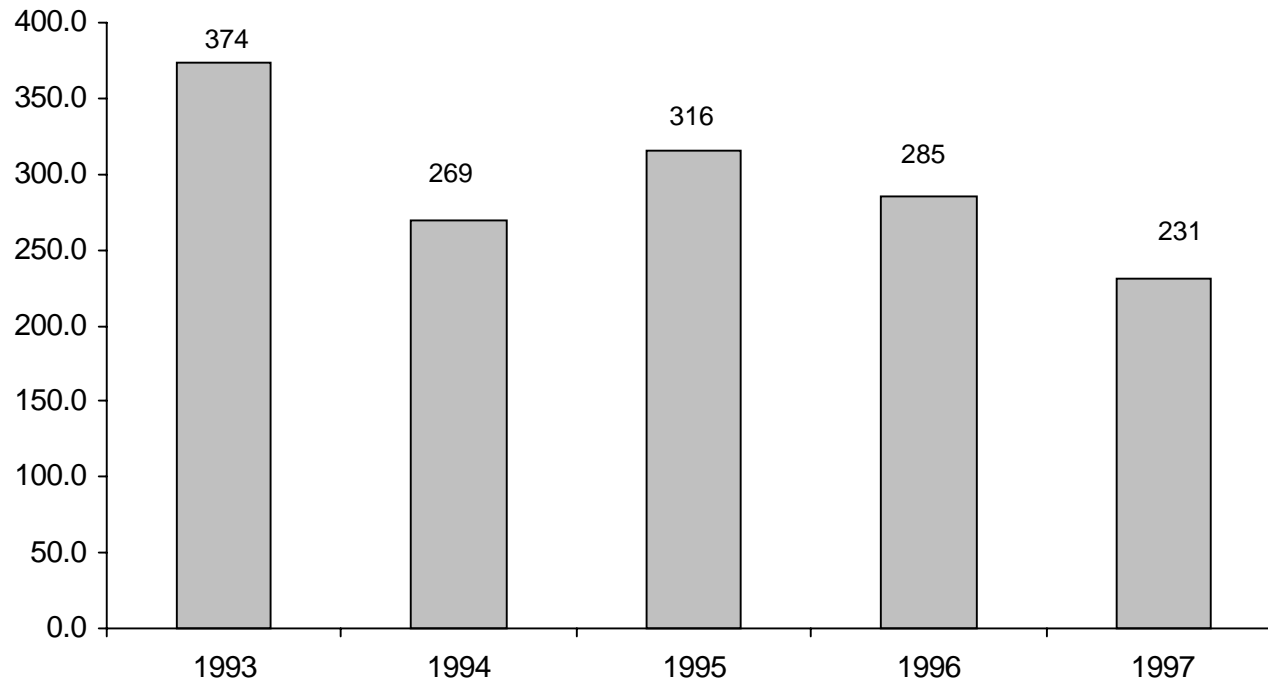
Notes: (a) Persons reported to be living with AIDS, through December 1998.

HEALTH	RESOURCE	VALUE
Demographic	Socioeconomic	Health Status

**Exhibit I-C-61:**

The number of newly diagnosed AIDS cases in Delaware decreased from 1993 to 1997.

**AIDS Incidence (number of cases by first year of AIDS diagnosis)  
1993 to 1997**



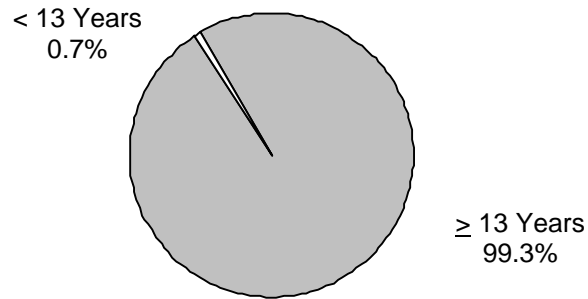
Sources: 1993 - 1997 data, Centers for Disease Control and Prevention. HIV/AIDS Surveillance Report, 1997.

HEALTH	RESOURCE	VALUE
Demographic	Socioeconomic	Health Status

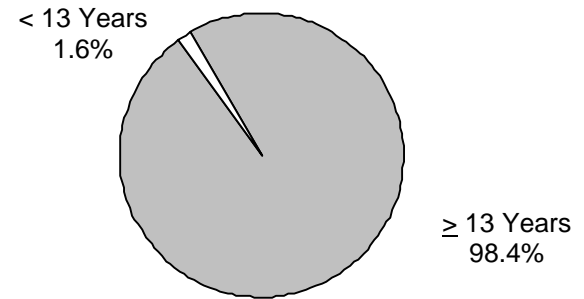
**Exhibit I-C-62:**

People with AIDS in Delaware were impacted at similar rates across age groups to those in benchmarks. As of 1997, Delaware accumulated a slightly smaller proportion of pediatrics AIDS cases relative to benchmarks.

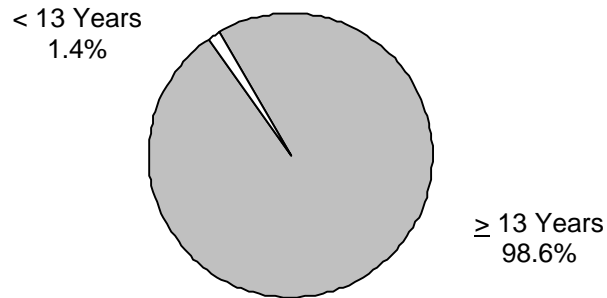
**Proportion of Cumulative AIDS Cases by Age Cases through 1997**



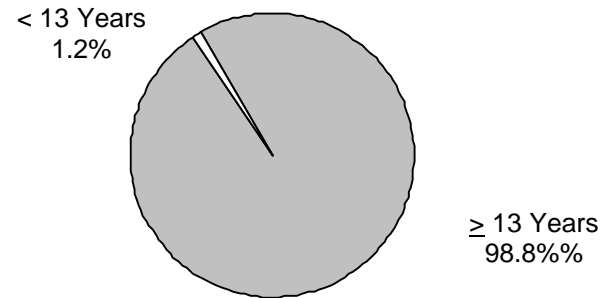
**Delaware**  
Total = 2,010



**Maryland**  
Total = 17,138



**Pennsylvania**  
Total = 19,323



**U.S.**  
Total = 619,690

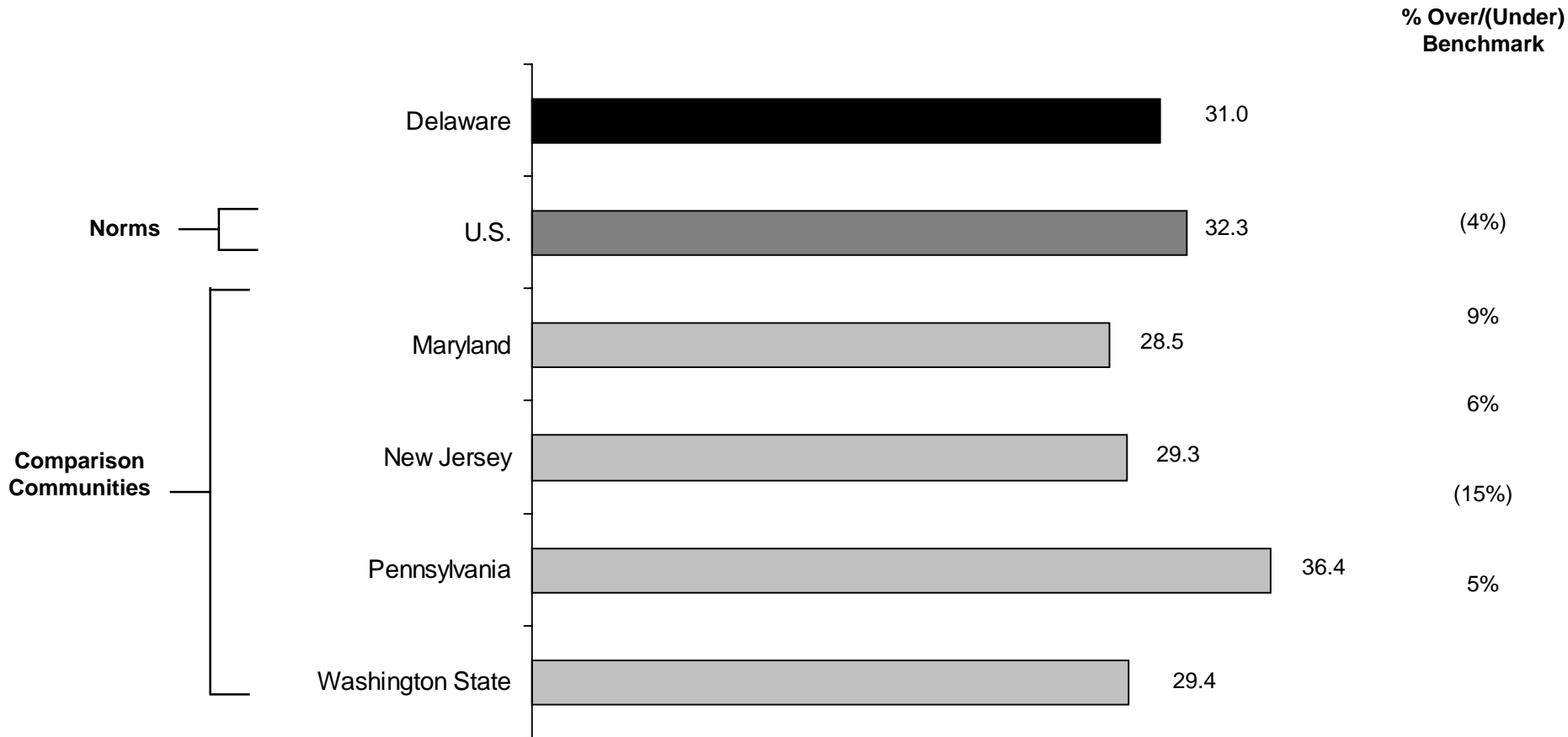
Sources: 1997 data, Centers for Disease Control and Prevention. HIV/AIDS Surveillance Report, 1997.

Notes: Data for the United States includes U.S. territories, dependencies and all 50 states.

HEALTH	RESOURCE	VALUE
Demographic	Socioeconomic	Health Status

**Exhibit I-C-63:** Delaware’s pneumonia and influenza death rate was within the range of state and national benchmarks.

**Pneumonia and Influenza Deaths per 100,000 Persons<sup>(a)</sup>  
1997**



Sources: 1997 data, U.S. National Center for Health Statistics, CDC Wonder Data Extraction Software.

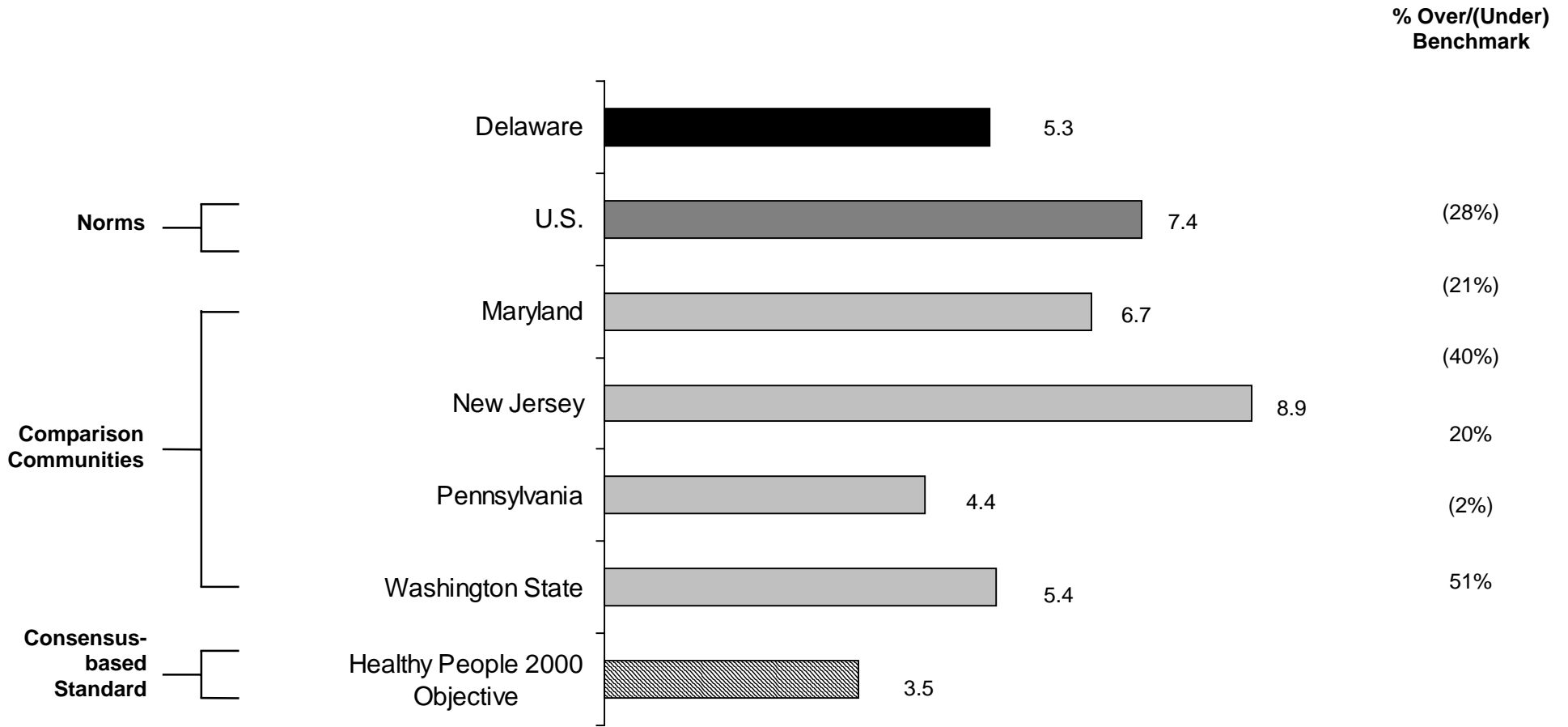
Notes: (a) Death rates are age-adjusted (except for U.S. rates which are age-sex adjusted) to the 1940 U.S. national population.<sup>6</sup>

HEALTH	RESOURCE	VALUE
Demographic	Socioeconomic	Health Status

**Exhibit I-C-64:**

The incidence of tuberculosis in Delaware was lower than most benchmarks but above the Healthy People 2000 objective.

**New Tuberculosis Cases per 100,000 Persons  
1997**



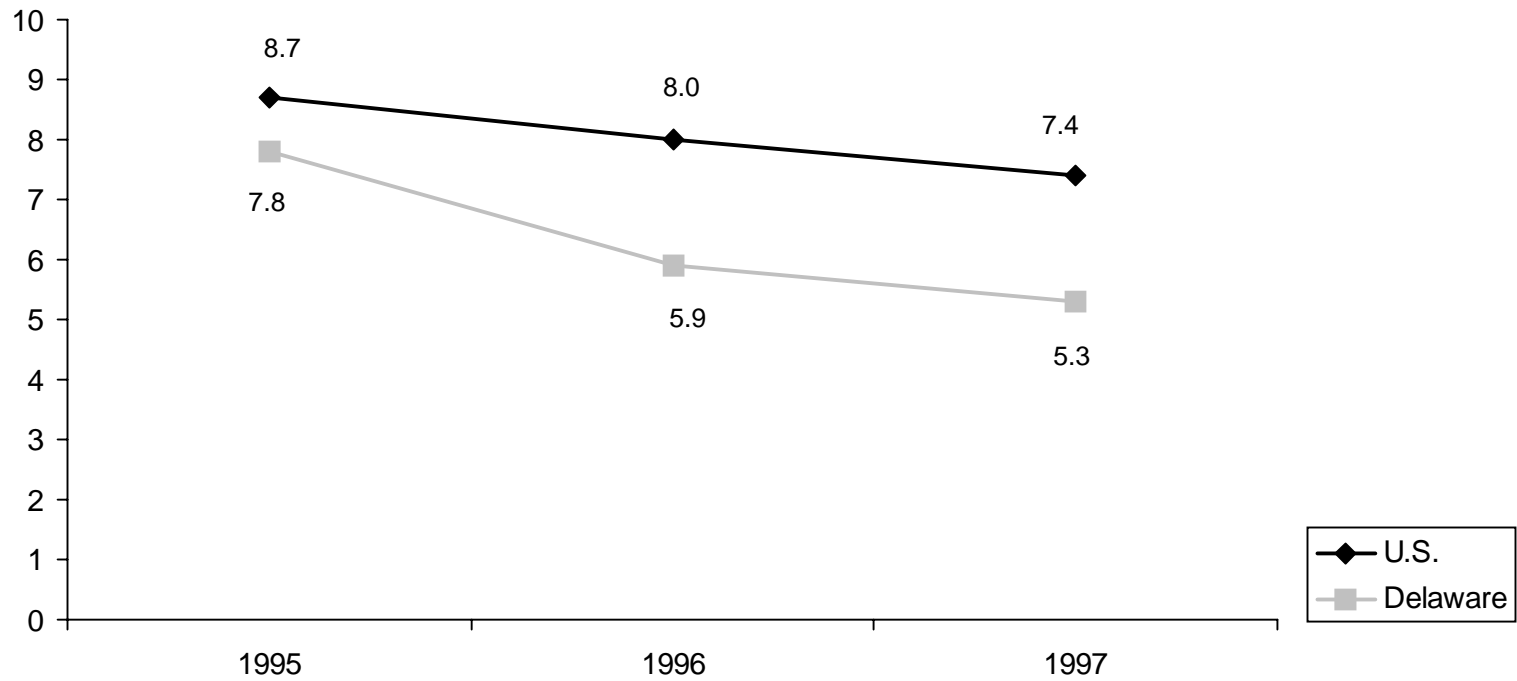
Sources: 1-6) 1997 data, U.S. National Centers for Disease Control and Prevention. Tuberculosis Morbidity - United States, 1997, MMWR; 47(13) 1998; 7) Healthy People 2000 Objective.

HEALTH	RESOURCE	VALUE
Demographic	Socioeconomic	Health Status

**Exhibit I-C-65:**

From 1995 to 1997, Delaware experienced a decrease in tuberculosis cases that paralleled the decrease in the U.S. tuberculosis case rate.

**Tuberculosis Cases per 100,000 Persons  
1995 to 1997**

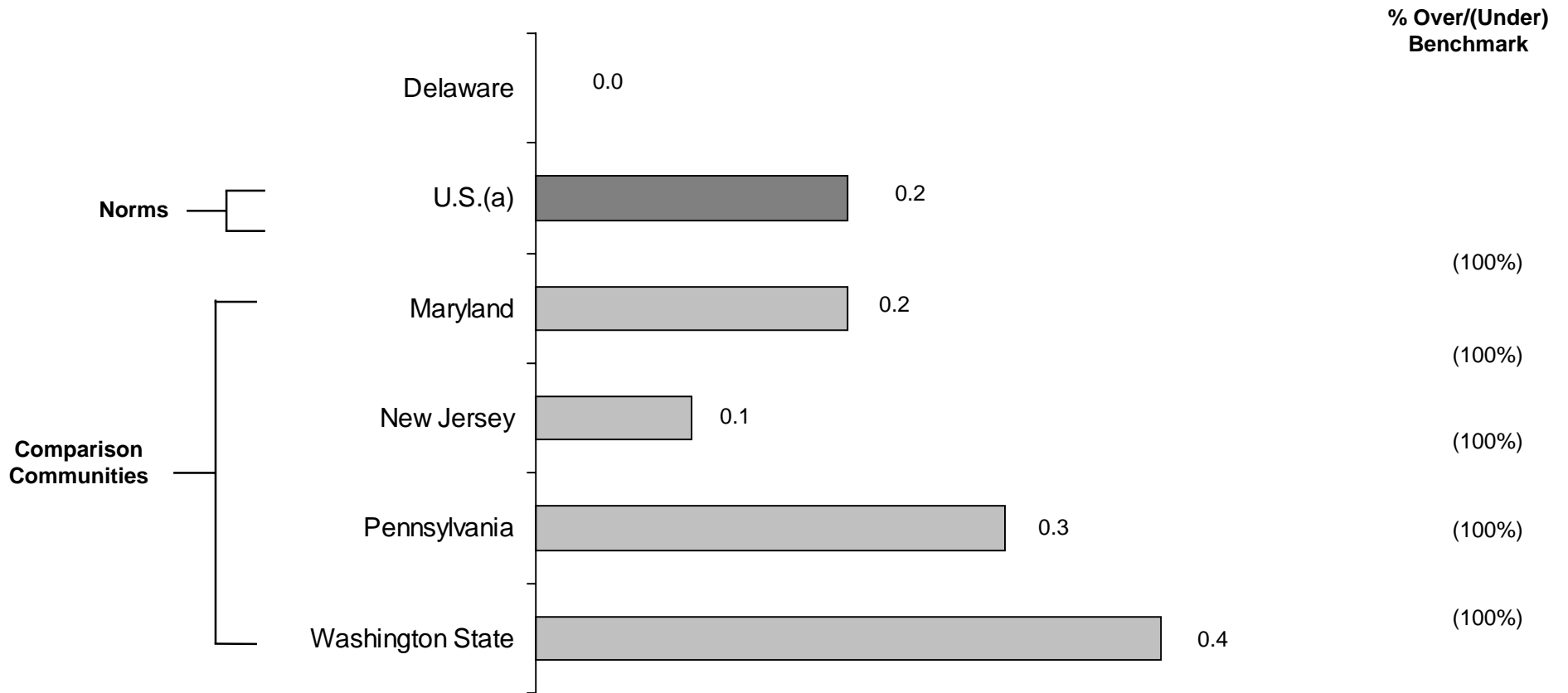


Sources: 1995 - 1996 data, Centers for Disease Control and Prevention. Reported Tuberculosis in the United States, 1996; 1997 data Centers for Disease Control and Prevention, Tuberculosis Morbidity 1997, MMWR; 47(13) 1998.

HEALTH	RESOURCE	VALUE
Demographic	Socioeconomic	Health Status

**Exhibit I-C-66:** Delaware had no new cases of mumps in 1997.

**New Mumps Cases per 100,000 Persons  
1997**



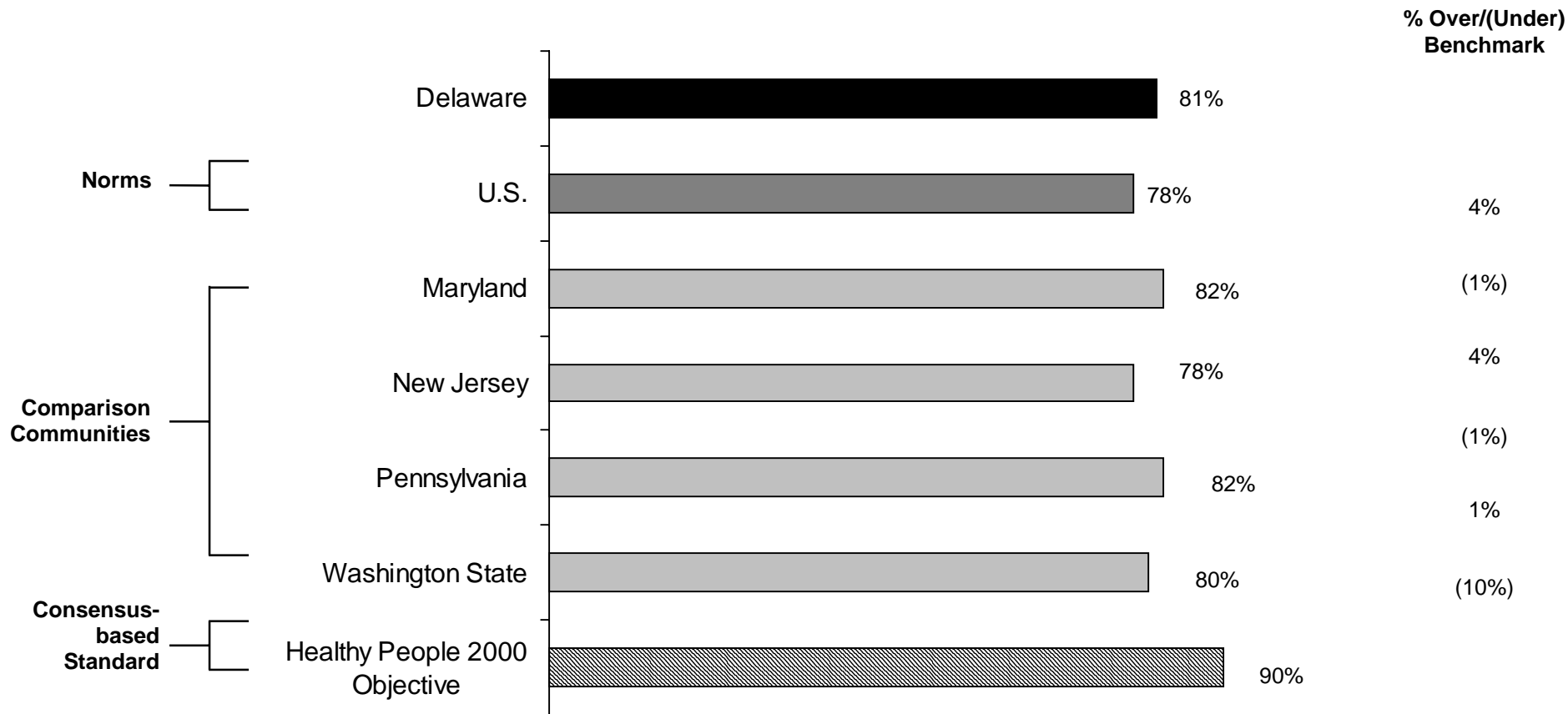
Sources: 1997 data, Centers for Disease Control and Prevention. Interactive MMWR Morbidity Tables. Table III Part 2. 1997.

Notes: (a) Mumps statistics for the United States include data from U.S. territories and dependencies, as well as the 50 states.

HEALTH	RESOURCE	VALUE
Demographic	Socioeconomic	Health Status

**Exhibit I-C-67:** Immunization rates for children aged 19 to 35 months in Delaware were comparable to most benchmarks but lower than the Healthy People 2000 Objective.

**Estimated Vaccination Coverage among Children Aged 19 to 35 Months<sup>(a)</sup>**



Sources: 1-6) 1997 data, Centers for Disease Control and Prevention. National Immunization Survey, Childhood Immunization Initiative; 7) Healthy People 2000 Objective.

Notes: (a) Vaccination is defined as having four DPT shots, three OPV shots and one MMR shot for children that were born during February 1994 through May 1996.

HEALTH	RESOURCE	VALUE
Demographic	Socioeconomic	Health Status