

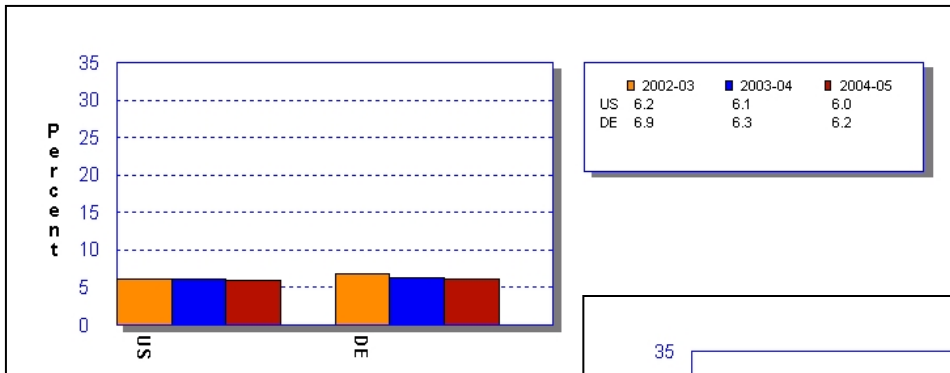
# Delaware DATA

## Delaware Drug and Alcohol Tracking Alliance

July 2007

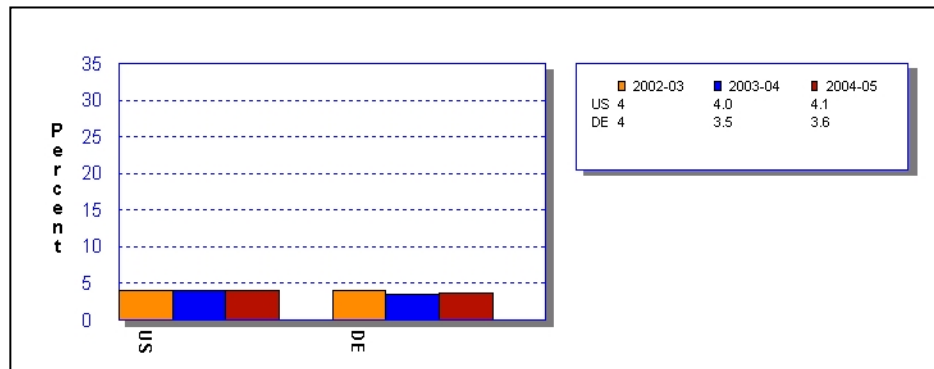
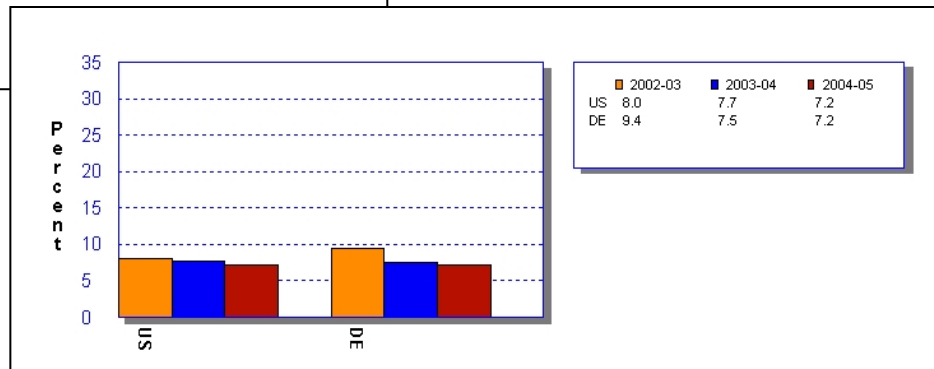
Volume 2, Issue 05

### Marijuana Use across Age Categories

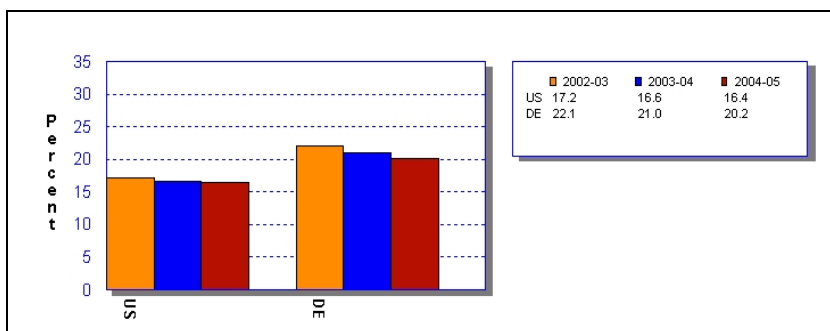


Despite a slight non-significant downward trend in Delaware, marijuana use is above the national average.

The top table on the right shows marijuana use among teenaged youth in Delaware, as well as the national trend. Though teenage use was once above the national average, the recent downward trend has brought it down to meet the average. The bottom table on the right illustrates marijuana use by adults (those aged 26 or older) in Delaware. The rate for this part of the population has remained steady and below the national average.



College aged individuals in Delaware, on the other hand, have consistently contributed to the state's higher than average rate of marijuana use. Though a downward trend is visible, the change from year to year has not been statistically significant.



**Source: Office of Applied Studies, Substance Abuse and Mental Health Services Admin, NSDUH, 2002-2005**

Delaware Datagrams may be copied without permission. Please cite D-DATA as source. \*\*\*302-831-3204\*\*\* basha@udel.edu  
Additional Datagrams are available at: [www.udel.edu/delawaredata](http://www.udel.edu/delawaredata)