

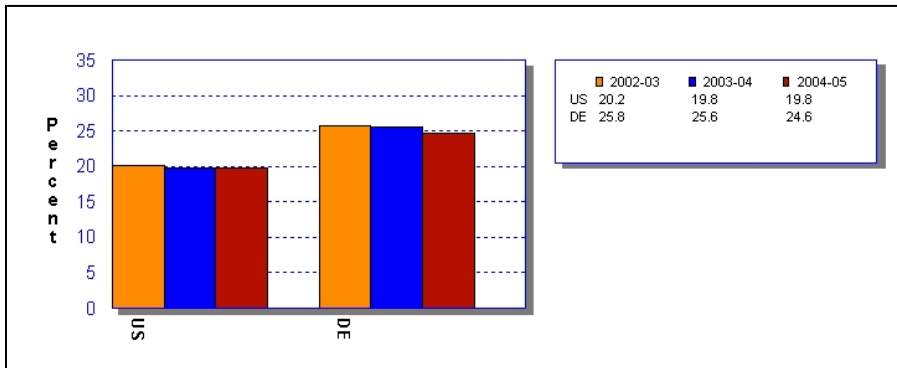
Delaware D-A-T-A

Delaware Drug and Alcohol Tracking Alliance

June 2007

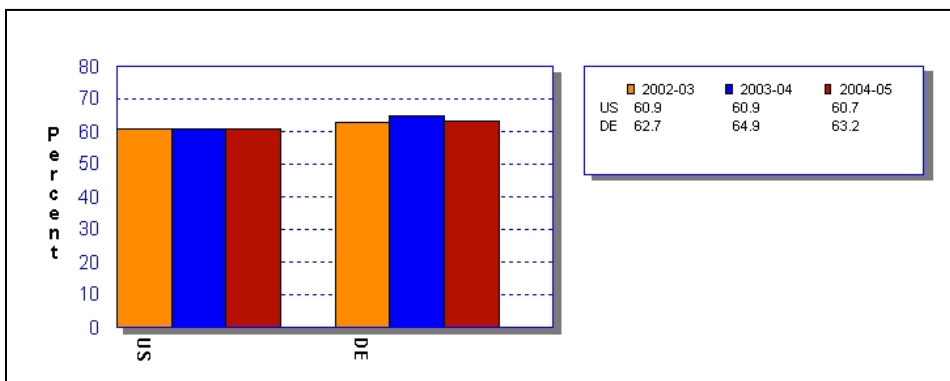
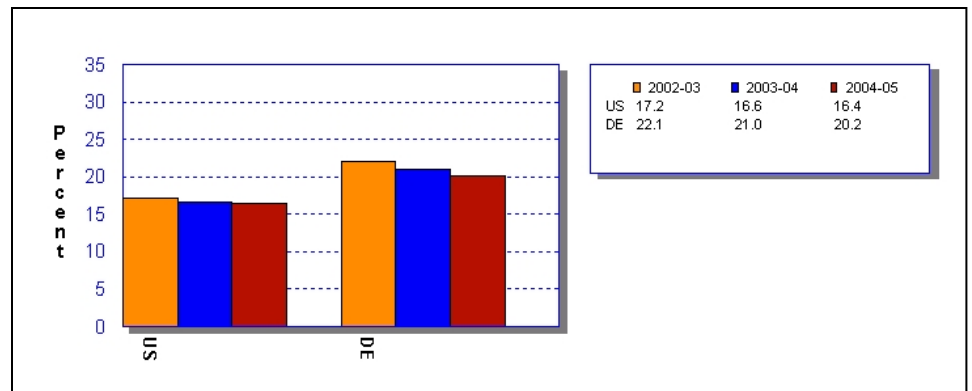
Volume 2, Issue 04

Drug and Alcohol Use by Delaware College-Aged Individuals



Despite a downward trend within the state of Delaware, illicit drug use (other than marijuana) remains high among college-aged individuals. This is uncommon for the region, with other states in the area near or below the national average.

As with other illicit drug use, marijuana use by college-aged individuals in Delaware is above the national average. The same downward trend can be found in other states. Other than Pennsylvania, nearby states are near or below the national average. However, even Pennsylvania is below Delaware's rate.



In contrast to illicit drugs, alcohol use among college-aged individuals has experienced a slight increase in Delaware over recent years despite a stable national trend. Other states in the region are also above the national average, but only Delaware has experienced an increase.

Not all the data are bleak, however. Cigarette use among college-aged individuals (not shown) has dropped sharply in Delaware and is now below the national average.