

Delaware DATA

Delaware Drug and Alcohol Tracking Alliance

April 2007

Volume 2, Issue 02

Eleventh Grade Alcohol Use and Consequences

On the 2006 Delaware School Survey, two out of three 11th grade students report drinking in the past year, and one in four reports binge drinking in the past two weeks. While few students report heavy regular use of alcohol (weekly or more), they are most likely to also report consequences or associated risk behaviors.

1 = no drink in past year (34% of kids)

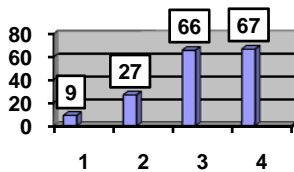
2 = occasional drinker (doesn't binge, * 39% of kids)

3 = binge* drinker (24% of kids)

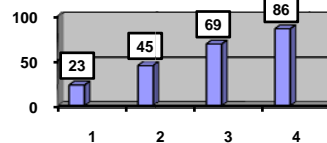
4 = heavy drinker (weekly+binge*, 3% of kids)

All charts in percentages.

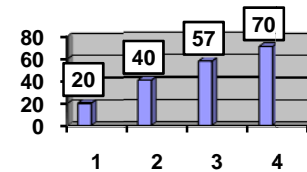
More Likely to Have Driven Drunk



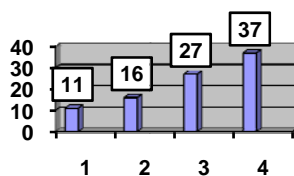
More Likely to have Ridden with a Drunk Driver



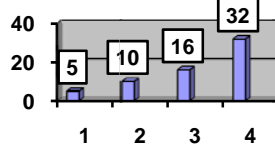
More Likely to Have Skipped School



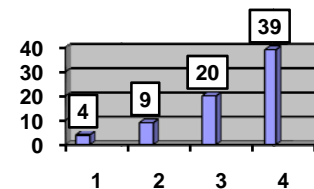
More Likely to Have Hit Someone in the Past 30 Days



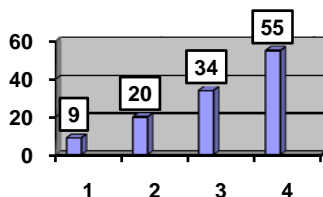
More Likely to Have Been Suspended from School



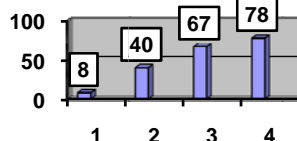
More Likely to Have Been in Trouble with Police



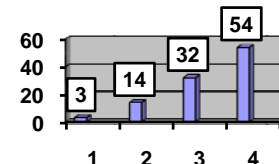
More Vandalism



More Likely to Have used Marijuana in Past Year



More Likely to Have Used Other Illegal Drugs



Source: 2006 Delaware School Survey, University of Delaware Center for Drug and Alcohol Studies

Delaware Datagrams may be copied without permission. Please cite D-DATA as source. ***302-831-3204*** basha@udel.edu
Additional Datagrams are available at: www.udel.edu/delawaredata