

Photoshop 5.5 Tips & Tricks

About This Exercise

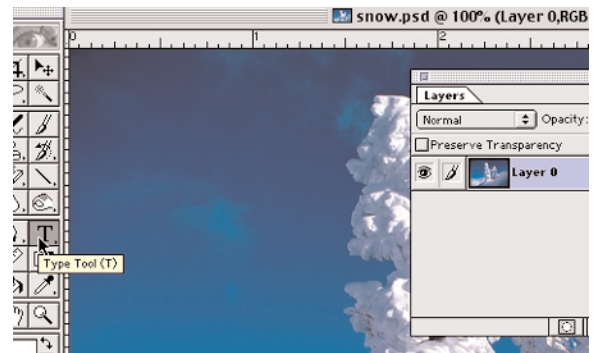
In this example, we will create a vanishing type effect. You will be applying a Layer Mask to a text layer and filling a section with a Gradient fill. This creates a smooth transition from the back to the image to the text.



1. Open File

1. Open an image file.
2. **Select the Type Tool**

DO NOT click down on the Canvas yet. First we will sample a blue color from the sky to fill the text. We will invoke the Eyedropper Tool using a keyboard modifier.

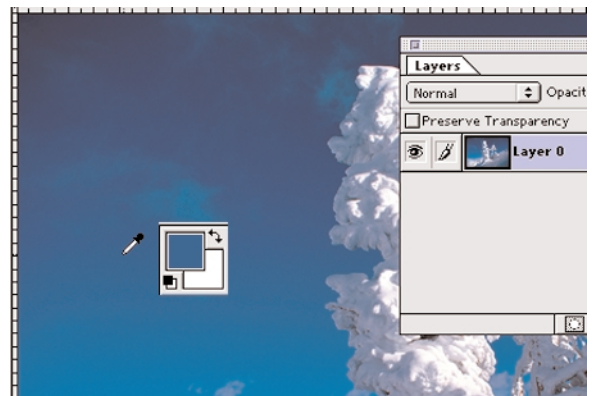


2. Select A Color

1. With the **Text Tool** still active hold down the **Command key**. The cursor turns into the **Eyedropper Tool**.

2. While holding down the **Command Key**, move your cursor over the canvas. Notice how the color you are moving over appears in the **Foreground Color swatch** in the **Tool Bar**.

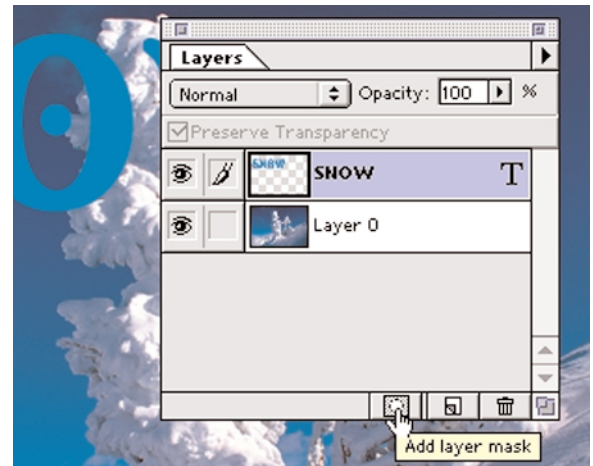
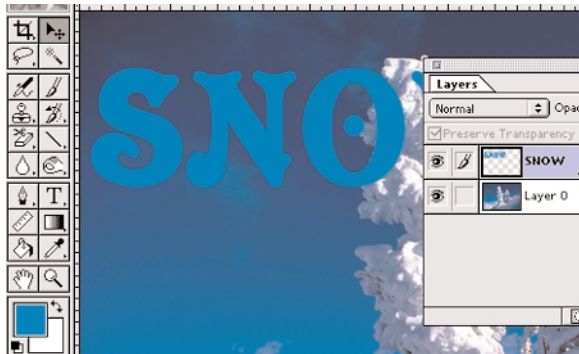
3. Pick a shade of light blue.



Photoshop 5.5 Tips & Tricks

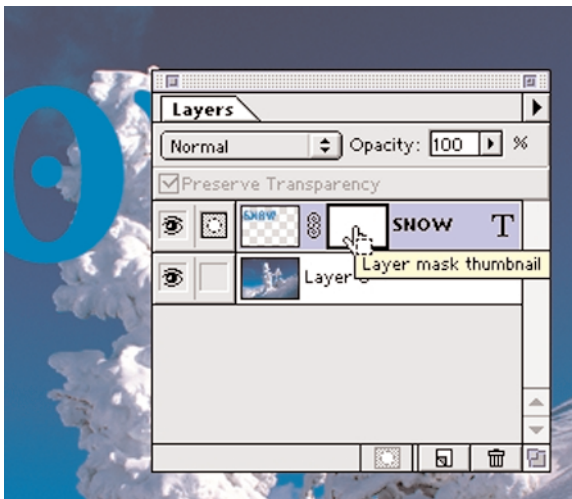
3. Add Text And Layer Mask

1. When the **Text Control window** appears, **Select** a font face and **Choose a Large Font Size**.
2. **Reposition Text** on the canvas
The text appears on it's own layer in the Layers Window.
3. **Click on the Add Layer Mask Icon** at the bottom of the **Layers Window** to add a Layer Mask to the Text layer.



4. Select The Text

1. **Select the Text in the Text Layer** by;
Holding down the Command Key and **Click on the Text Icon** in the **Layer's Window**.
Marching ants should appear around the text to indicate it is an active selection.



Photoshop 5.5 Tips & Tricks

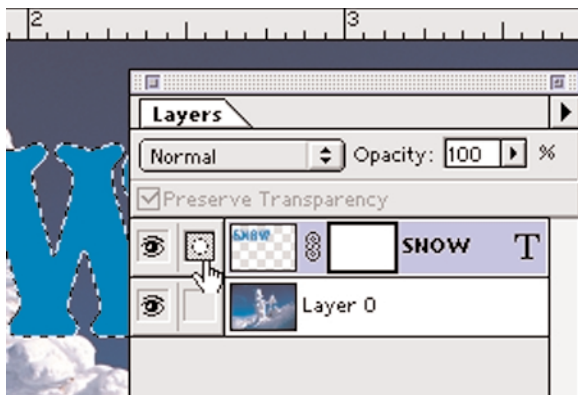
5. Modify The Selection

1. Before you modify the selection be sure you are working on the **Layer Mask** and **Not the Text Layer** its self.

The **Layer mask icon** should be visible in next to the **Eye icon** in the **layers Window**.

If the **Paint brush icon** is visible this indicates that the **Text Layer** is selected **NOT the Mask**.

Note: If you need to reactivate the layer mask, simply **Click** on the **Layer Mask** in the **Text Layer**. The Layer Mask Icon will appear next to the Eye Icon when it is active again

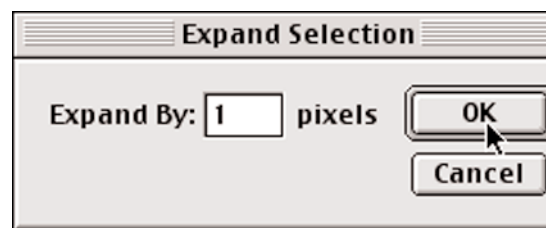
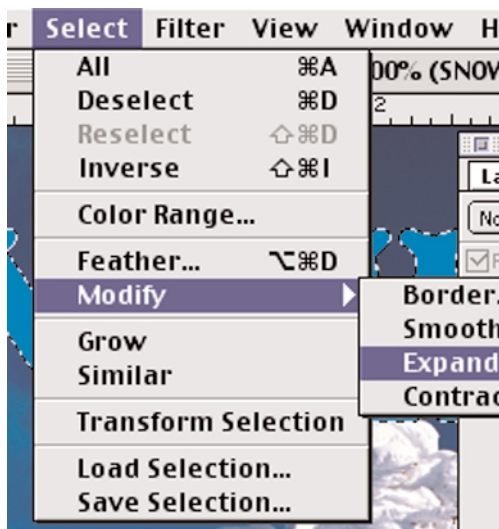


You need to expand the select so all the anti-alias text is included in the selection when you fill the mask. This will create a smooth fill and leave no hard edges along the text.

1. With the selection still active, go to the **Select Menu**, **Drag** down to **Modify** and over to **Choose Expand**.

The Expand Selection dialog box appears.

2. **Type** in **1**, for the number of Pixels to expand and **Click, OK**.



Photoshop 5.5 Tips & Tricks

6. Filling Mask With A Gradation.

With the selection still active, you will now fill the layer mask with a gradation fill. This will fill the active text selection with a Black to White fill. Anything on the Mask that is Filled with Black will be transparent. Anything on the Mask fill with white will be blue. Using a Gradient will allow for a smooth transition between the background and the text. This is what creates the vanishing effect.

Where you Start and End your gradation will determine how the selection is filled.

1. **Select** the **Gradation Tool** in the **Tool Bar**.
2. Click the Cursor down at the bottom of the selected text.
3. Drag the Cursor Up to where you want the gradation to stop.

Note: you should experiment to see what gives the best results. Use the Command and Z Keys to undo each unsuccessful fill.

Examples below will give you some idea of how this tool behaves.

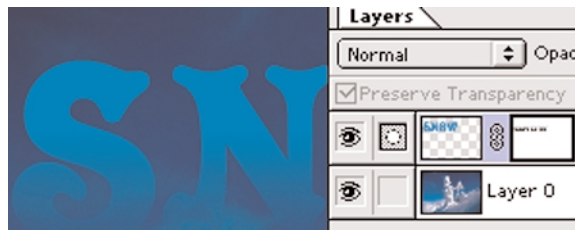


Photoshop 5.5 Tips & Tricks

8. Mask Is Filled.

My final selection looked like the example below.
Notice how the Layer Mask is Filled with the Gradient.

All that's left to do is save the file in the format you need.



End
Vanishing
Text