

Photoshop 4.0 Tips & Tricks

Some familiarity with the Macintosh and Photoshop 4.0 is very helpful. We also assume, you have a previously created or scanned image to open.

By following these instructions you will create an image with a faded edge. You will also be learning a little about Layers and Layer Masks as well as a few Powerful time saving tricks for less mousing around.

Preview this process in a [QuickTime .MOV file format](#). It's a 9.5 MB file and you will need MoviePlayer to play back the file.

Image With Faded Edges



Photoshop 4.0 Tips & Tricks

1. Open Your Image

Locate and open your image.

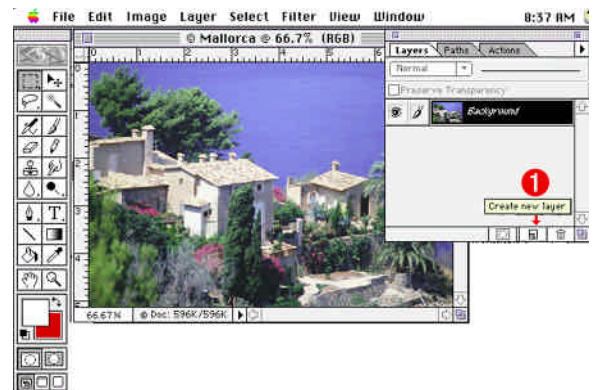
If your **Layers Window** is not open, look for it under the **Window Menu** and **Select Show Layers**.

Your image is in the background layer.

2. Add New Layer

Click your mouse on the **New Layers Icon** ① at the bottom of the **Layers Window**.

A **New Layer** is added to the **Layers Window List**.



3. Select and Fill New layer

a) Click on and **Select the New Layer** ①.
(It's title will be blackened)

b) Press **Command ⌘** and **A** keys to select the whole layer.

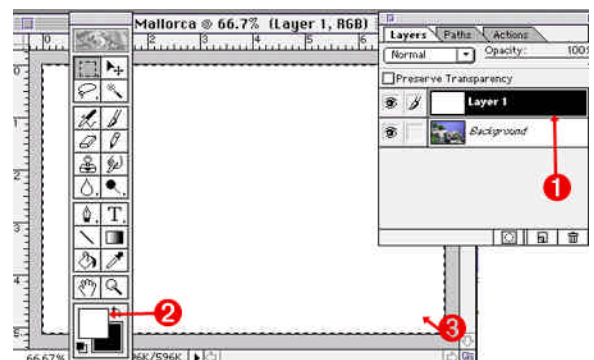
(Or, **Select All** in the **Edit Menu** or hold down the option key and click on the layer's icon in the **Layers Window**.)

c) **Fill with White** or your desired color (be sure the foreground color is set to your desired color.) ②

d) Press the **Option** and **Delete** keys at the same time to fill the selected layer with your selected color. ③

Your **Image Layer** will disappear.

Your **new layer** is above it in the **Layers Window**.



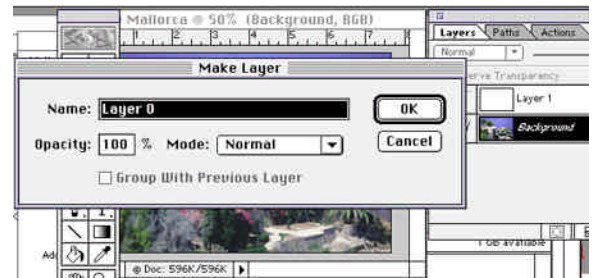
Photoshop 4.0 Tips & Tricks

4. Change Layer Name

Change your image layer name (now called Background) by **Double Clicking** on its **Layer**.

A dialog box will appear. Layer 0 is the default name, but you can name it what ever you like.

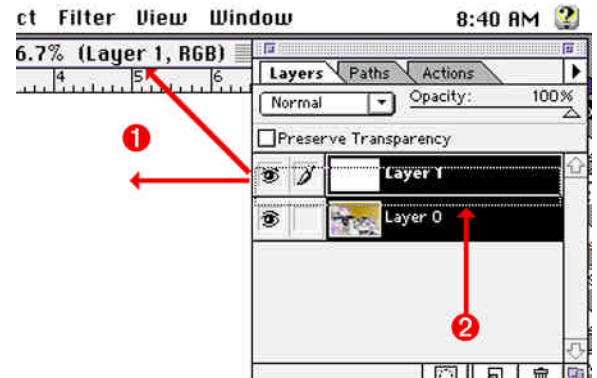
Remember your **Image Layer** is not visible because your **Colored Layer** is above it in the **Layer Window**. Now that the Image Layer's name has been rename, we can now move the layer above the new layer.



5. Move Image Layer

To make your **Image Layer** visible again, move your **Image Layer** **2** above the solid color layer.

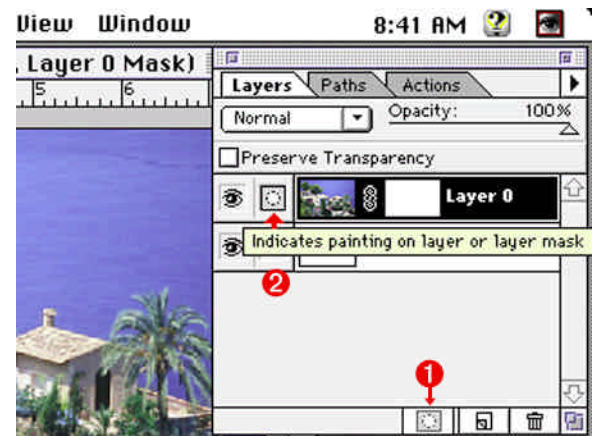
Click On and **Drag** the **Image Layer** **1** above the color layer (a dotted line appears around the layer). Let go of the mouse and the image layer should become visible again. If it didn't move, or appear, try the dragging process again.



6. Add A Layer Mask

Add a Layer Mask to your image layer By **Clicking the Layer Mask icon** **1** at the bottom of the layer window. Be sure the layer mask is active! **2** If it's not, you could destroy your image.

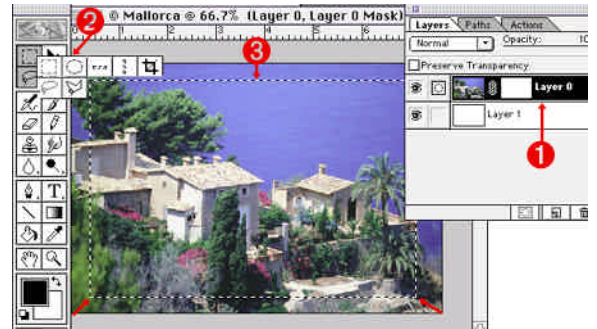
Note: PS 3 users, use the **Layer** pull down menu to add a **LayerMask**.



Photoshop 4.0 Tips & Tricks

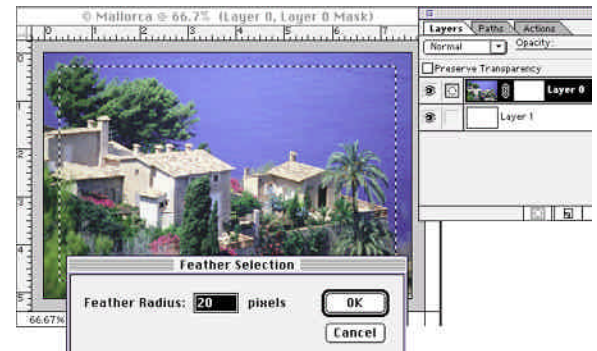
7. Select Section of image

- a) Click on your **Image Layer** to insure your **Image Layer** is the active layer (it will be highlighted) ❶.
- b) Click and Drag with one of the various **Selection Tools** ❷. Select the portion of the image you want to remain sharp ❸.



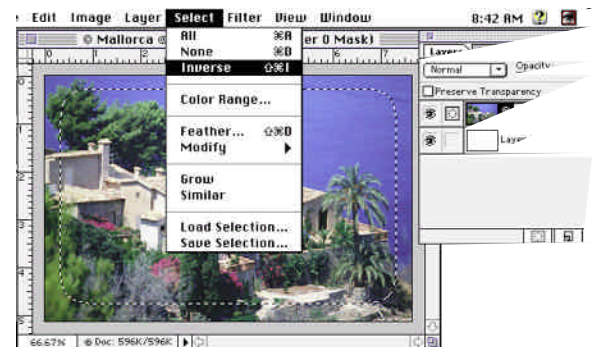
8. Feather Selection

- In the **Select Menu** choose **Feather**.
I used a feather of 20 pixels for this image.



9. Inverse Selection

- In the **Select Menu** choose **Inverse**.



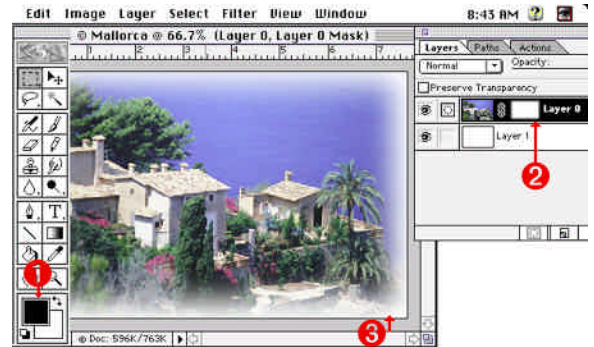
Photoshop 4.0 Tips & Tricks

10. Fill Image Layer Mask With Black

Choose Black as the Foreground Color ①.

Press the Option and Delete keys together.

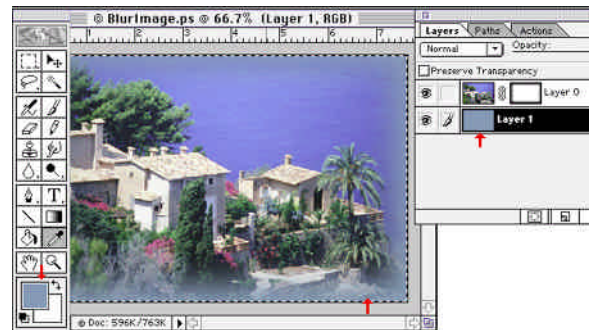
This will fill the layer mask feathered selection with black (②), making the image become transparent in the selected area (③).



Some Experiments To Try

Changing the color fill in the color layer can create an interesting variations in an image.

Experiment to see what works best for your image. I used the eyedropper tool to get the blue from some flowers in the garden for this background.



Vignettes

Try changing your Selection Tool to create different effects. Old time vignettes are easy to create by using the oval/circular selection tool.

Try using a Texture for a background instead of a color fill.

**Experiment, Experiment,
Experiment,
and Have Fun!**



**End
Faded
Edges**