

Photoshop 5.0 Tips & Tricks

Some familiarity with the Macintosh and Photoshop 5.0 is very helpful.

In this exercise, you will be making a beveled button with text that appears to be recessed.

In addition to working with multiple image layers, you will be changing colors, selecting and kerning type, and apply a few of Photoshop 5.0's new effect options.

Other Related Instructions.
Web Safe Color Chart in Hex & RGB

Creating A Simple Beveled Button For the Web or PowerPoint



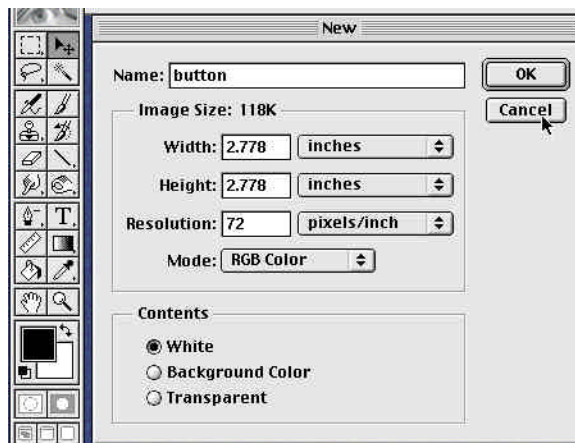
Photoshop 5.0 Tips & Tricks

About Beveled Buttons

In this example, we used the rectangle tool to make the button shape. But, any type of selection will work just as well.

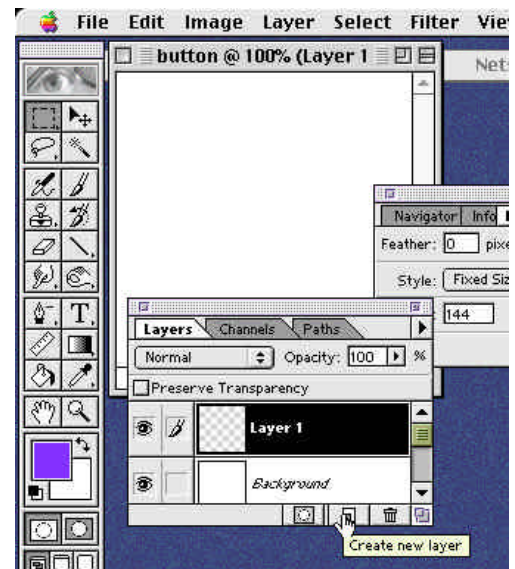
1. Make a New Page

- File Menu – New** – the **New File Window** appears.
- Name your file “button”.
- Set **Canvas Size** width & height settings
(This example is 2.778 inches x 2.778 inches.)
- Click **OK**.



2. Make a New Layer

- In the **Layers Window** - Click on the **New Layer Icon**.
A new layer appears in the Layer Window.

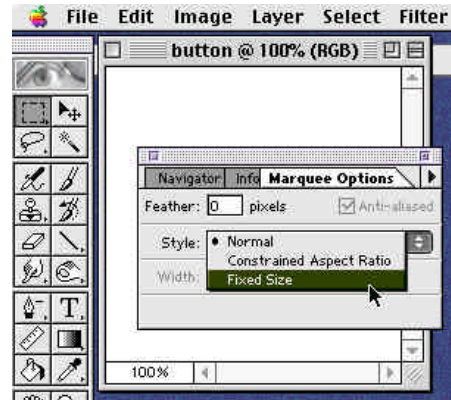


Photoshop 5.0 Tips & Tricks

3. Create a Shape

Working in the New Layer

- Select the **Marquee Tool** in the toolbox pallet.
- Double click** on the **Rectangle Icon** to bring up the **Rectangle Selection Options** – the selection options box appears.

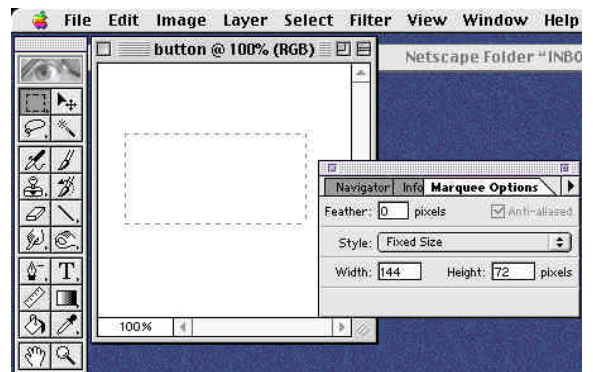


4. In the Styles Drop Down Options

a. Select - Fixed Size

Key in width 144, height 72.

Clicking the mouse in the canvas window will automatically create a rectangle selection the size you keyed in the selection options.



5. Select and Fill with Web Safe Color

- In the **Tool Box** – **Double Click** on the **Foreground color** box. The Color Picker appears.

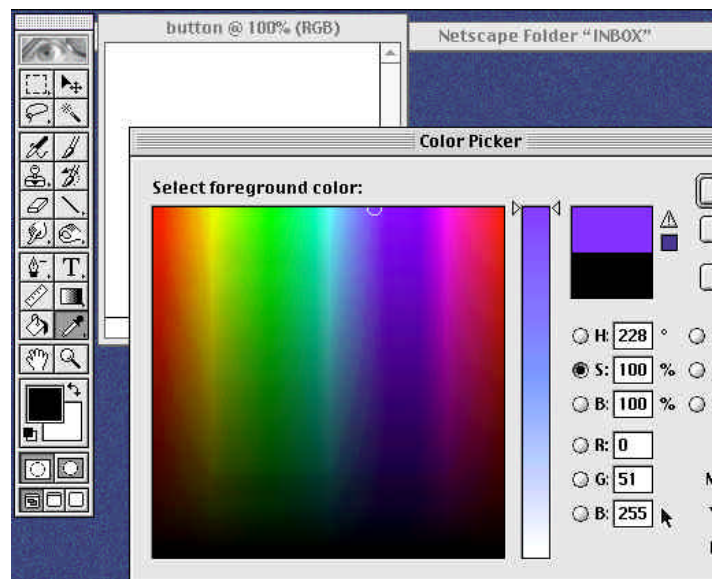
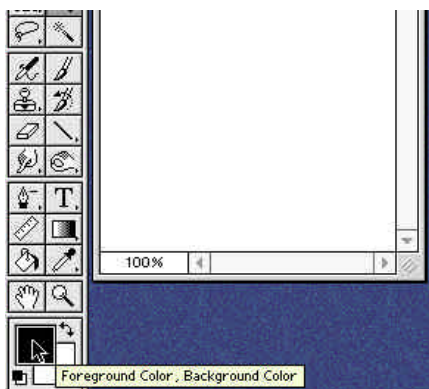
b. Choose a Web Safe Color

In this example, we chose R=0, G=51, B=255.

- Click OK** to close.

- Use the **Option and Delete Keys** together to **Fill** the selection with the selected color.

- Use the **Command and D keys** to **Deselect** the filled rectangle.



Photoshop 5.0 Tips & Tricks

6. Adding The Bevel

Working in the rectangle layer

a. In the Layer Menu – drag down to Effects – over to Bevel and Emboss.

The effects control window appears.

The Highlight Option controls how much highlighting is applied to the effect. The higher the percentage, the brighter the highlights.

The Shadow Option controls how dark the Shadows appear.

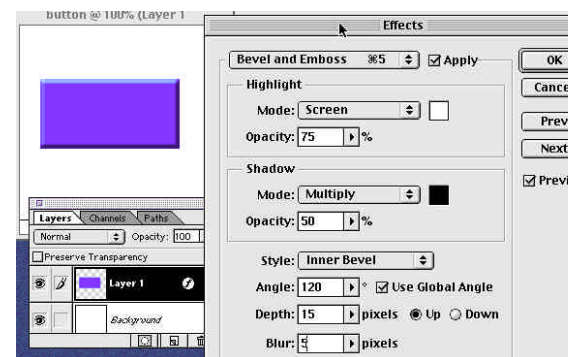
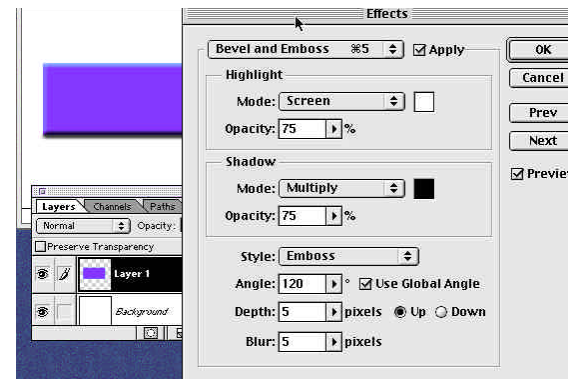
The higher the percentage, the darker the shadow.

The Style Option lets you select the button style.

Note: Choosing the **Style Option** first will give you a better idea of how the other options will effect your button.

b. In this example, the settings chosen were: Highlight 75%, Shadow 50%, Inner Bevel 100, 15, 5.

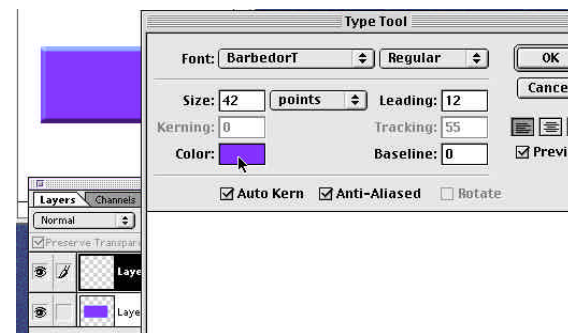
The button is finished!



7. Let's Add Some Text to the Button

Select the Text tool - click the mouse on the button canvas.

The Text Option window appears.

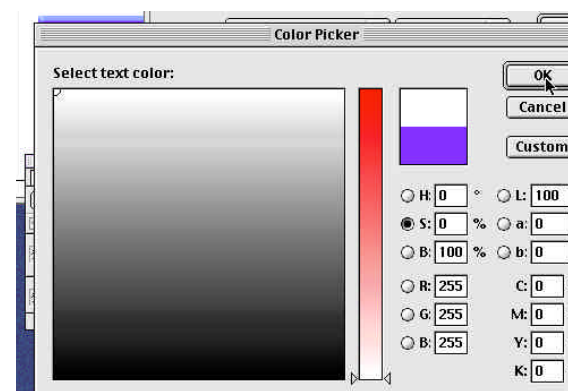


8. Change Text Color in the Text Options Window

The blue color from the rectangle fill is still selected.

a. Click on the Color Box – the Color Picker appears.

White was selected for this example: R=255, G=255, B=255.



Photoshop 5.0 Tips & Tricks

9. Change Font, Size, and Kern Text

a. In the **Font Drop Down Selection Box** choose a font. Arial Rounded – 42pt. was chosen for this example.

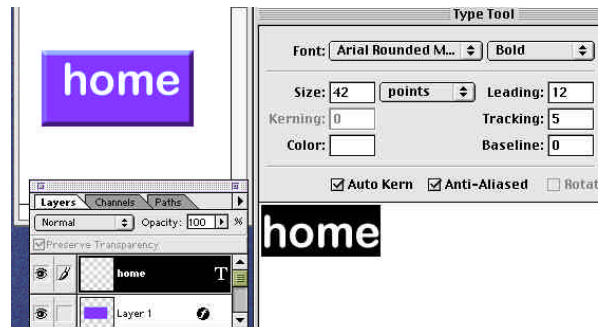
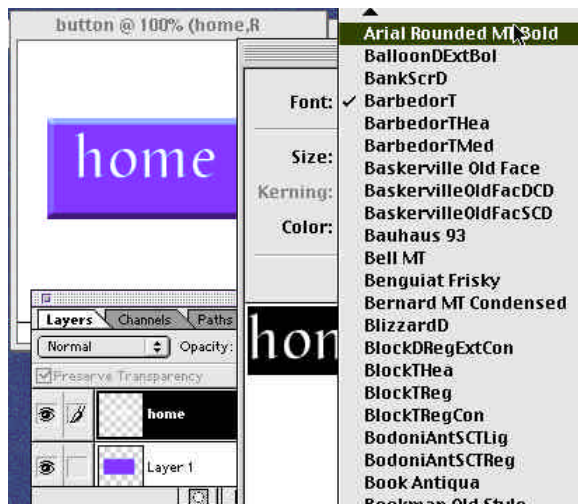
Note: that changes to the text appear in the canvas dynamically (as you type or make changes)

Another note: Kerning is used to move text characters closer together or further apart to give text a more pleasing appearance or to create interesting effects.

b. **Type in your text – Select Text – Tracking becomes an active option.**

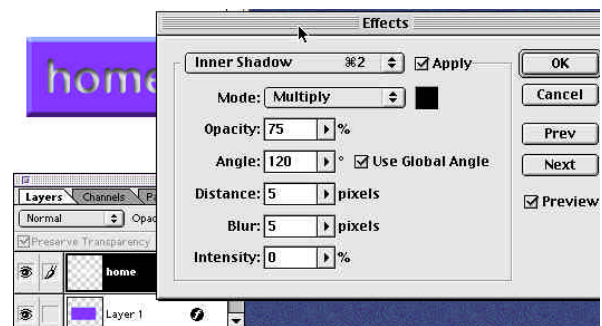
c. Key in a + number to spread out the characters or – number to contract them.

d. **Click OK** when all is to your liking.



10. Giving the Text a Recessed Appearance

a. **Layer Menu – drag down to Effects – over to Inner Shadow.** Opacity=50, Angle =120, Distance=3, Blur=3, Intensity=0.



Be sure to experiment with other options to see what types of buttons you can create. Also be sure to check in the "Goodies folder" on your Photosho 5.0 CD. Adobe has made a number of buttons for you to use and edit.

