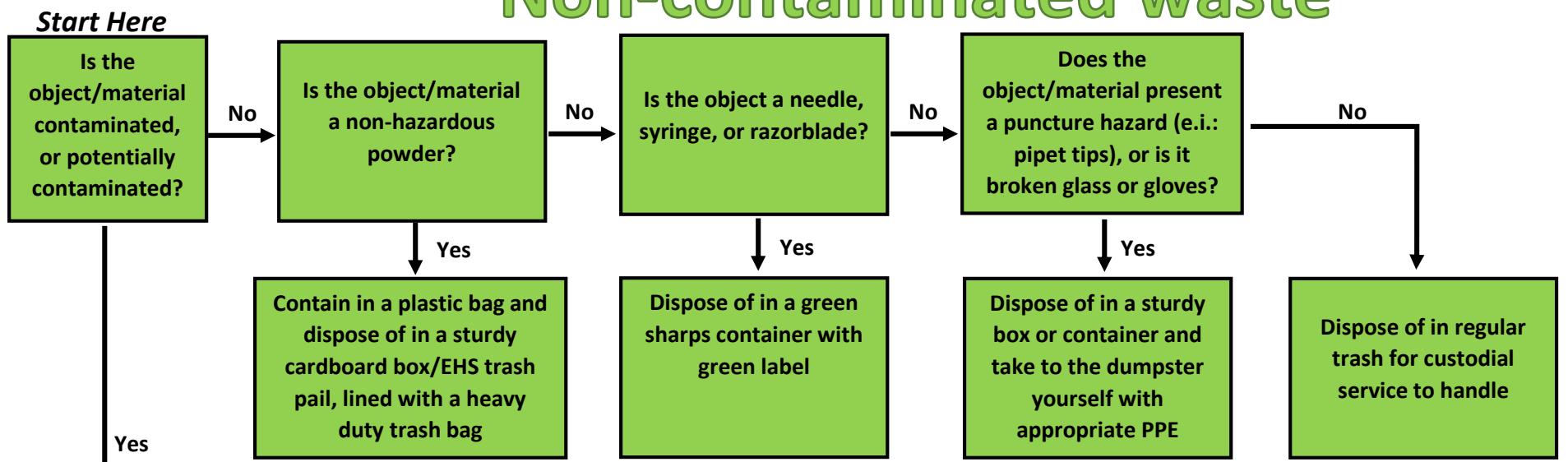
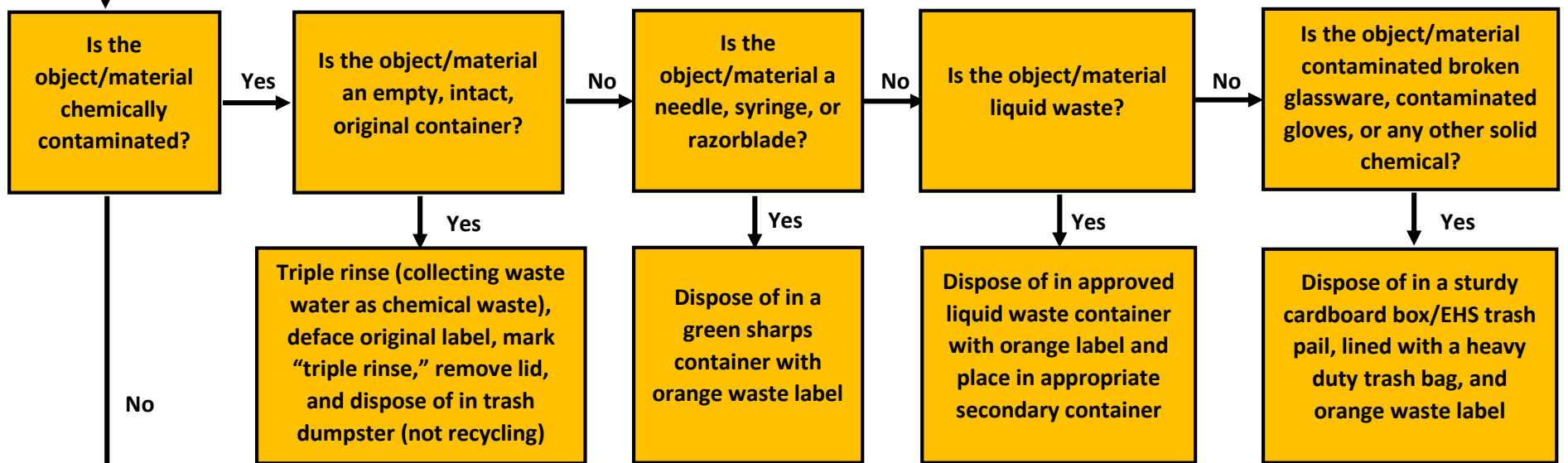


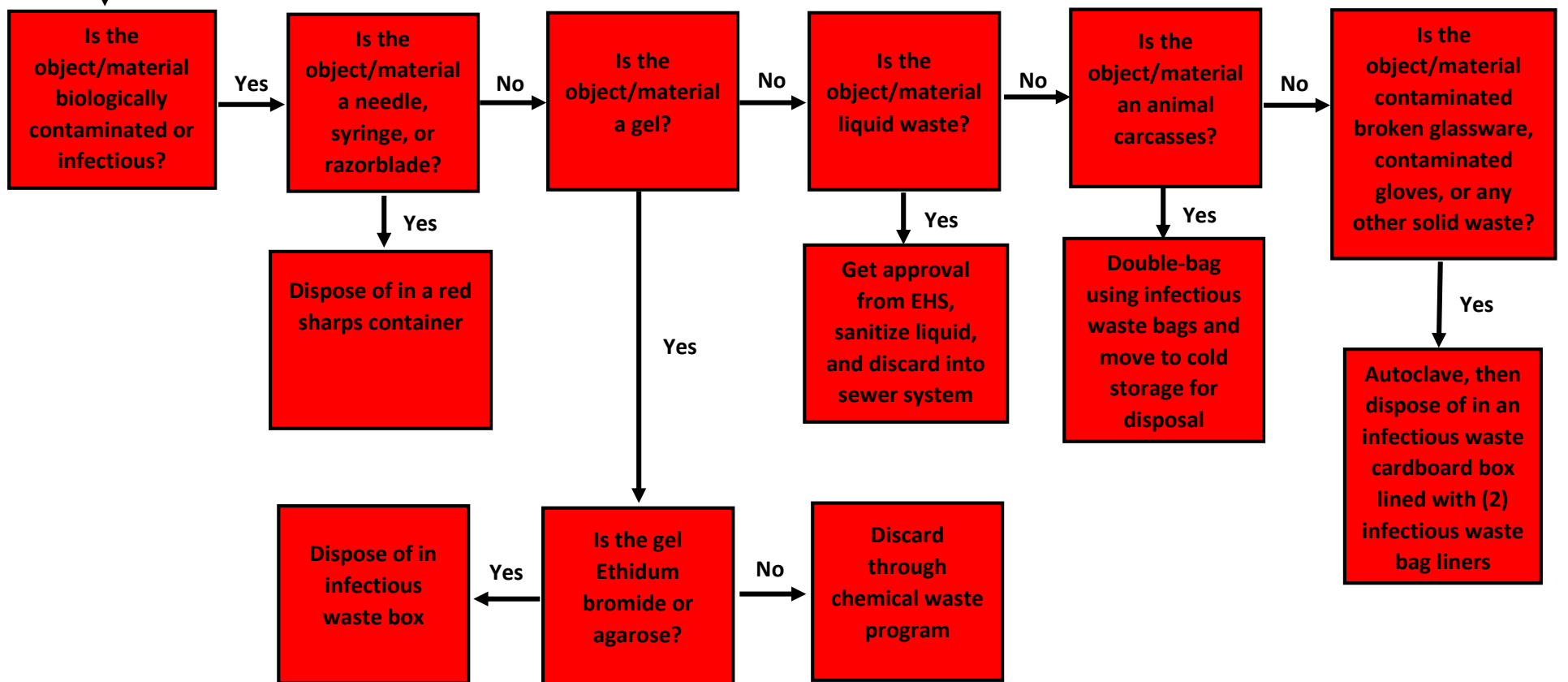
Non-contaminated waste



Chemically contaminated waste



Biological / infectious waste



Infectious waste box

Biologically contaminated or infectious solids



Biohazard sharps containers

Biologically contaminated needles, syringes, and razorblades



Chemical sharps containers

Chemically contaminated sharps or non-contaminated sharps



Lab solid waste box
(Brown, white, or glass specific)

Chemically contaminated or clean broken glass, or lab solid waste



Liquid chemical waste containers

Solvents, organic acids, inorganic acids, bases, or aqueous solutions