

Holistic Approach Needed for Disaster Resiliency, Sustainability & Public Safety



RECOMMENDED ACTIONS

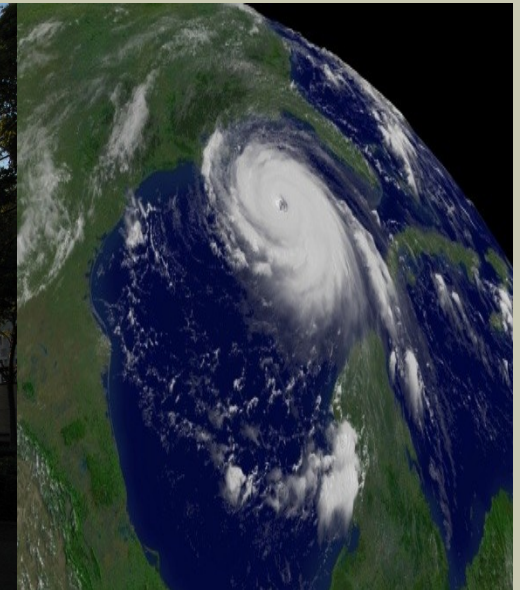
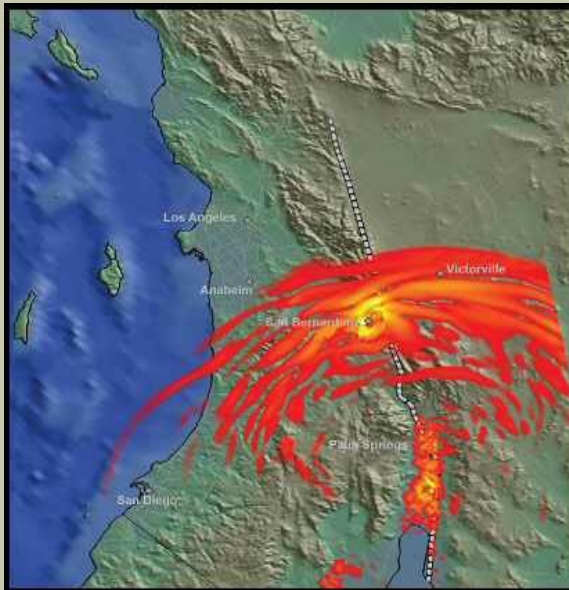
ROBERT WIBLE, PRINCIPAL, ROBERT WIBLE
& ASSOCIATES AND
FIATECH STREAMLINING PROJECT
MANAGER

SEPTEMBER 28, 2011

HOLISTIC APPROACH NEEDED



- ROBERT WIBLE & ASSOCIATES & ALLIANCE
- FIATECH – Consortium at UT Improve Efficiency
- ENR MARCH 2-3 CONFERENCE ON RESILIENCY



Holistic Approach Needed – Presentation



- When do we have enough wakeup calls ? Problems We Face
- Disaster Resiliency = Sustainability
& Sustainability = Disaster Resiliency - Examples of Projects that Benefit Both That Should Be Replicated
- Recommendations from March 2-3, 2011 Mitigating Disaster Through Design & Construction Conference – Washington, DC – McGraw – Hill
- Actions we must take together- public & private sectors – EM, Development, Sustainability, Safety Communities
- Q & A and Discussion

Holistic Approach Needed - How Many More Wake-up Calls Do We Need? 2011 Alone



- Christchurch, NZ & Japan's Triple Disaster – Quake, Tsunami, Nuclear resulting in thousands of dead /10 years to recover while jobs move to other nation
- In U.S. # of Man-made & Natural Disasters Increasing:
 - Record Tornadoes in South & Midwest
 - Record floods in Mid-Atlantic / New England
- All placing incredible demands on our people, our economy, & aging infrastructure
- Are we ready for The Black Swan event?

Holistic Approach Needed To Address On-Going Problem



Yet We Continue At National & Local Levels To:

- treat sustainability & resiliency as separate unrelated issues forcing these areas to compete for scarcer resources & public attention.
- prepare for, respond to & recover from future catastrophic events in piecemeal fashion, with most of public still believing “it can’t happen here.” (Less than 50% of nation covered by codes that address hazards!)
- Despite Administration declaring “resilience” a national priority, Federal Agencies continue siloed approach ignoring links with Sustainability, Economic Recovery & Public Safety and a concerted, well coordinated effort with private sector & state & local governments
- Congress attention focused on budget fights & 2012

THE NEED FOR A HOLISTIC APPROACH



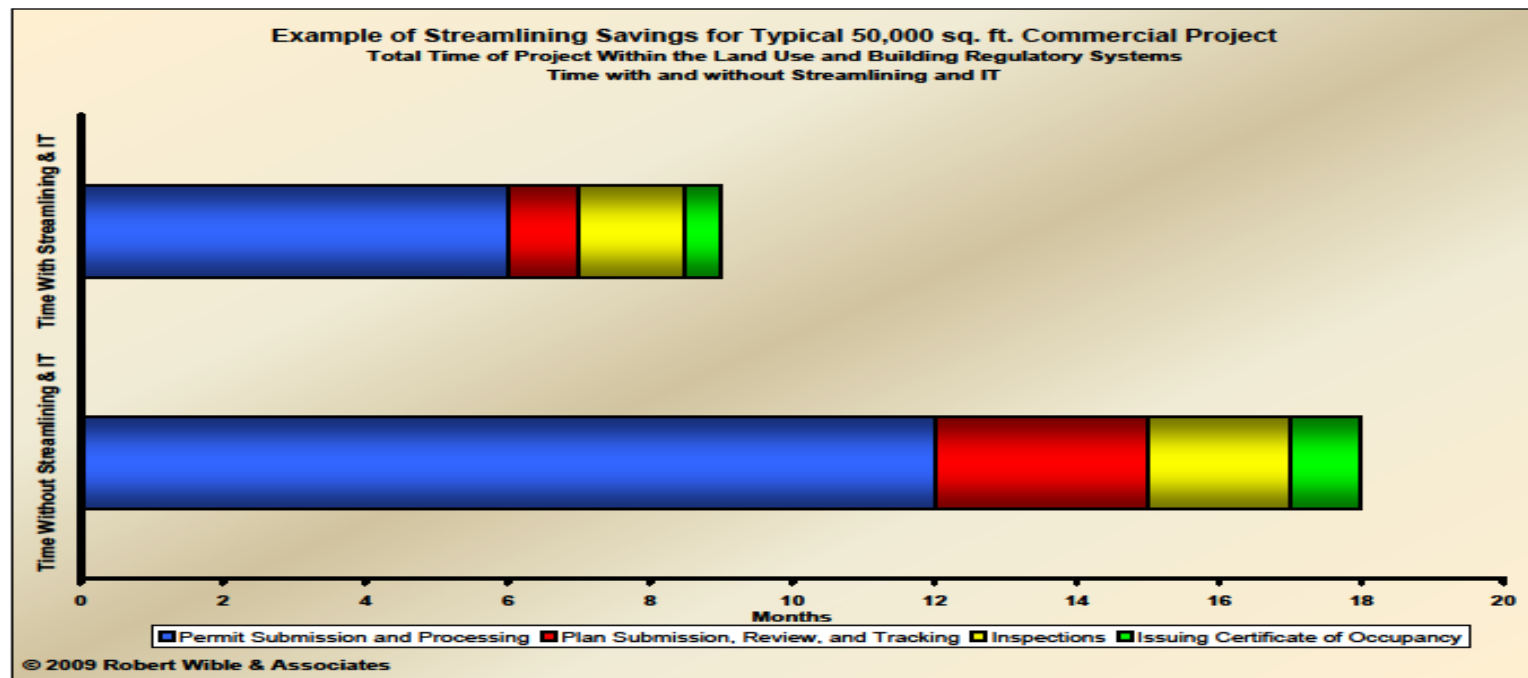
- Sustainability = Disaster Resiliency
- Resiliency = Sustainability



Examples of Holistic Approaches: Regulatory Streamlining



- Effective & Efficient Building Codes Administration & Enforcement - Time Savings from use of IT



Regulatory Streamlining – Benefits

Sustainability, Economic Development, Safety



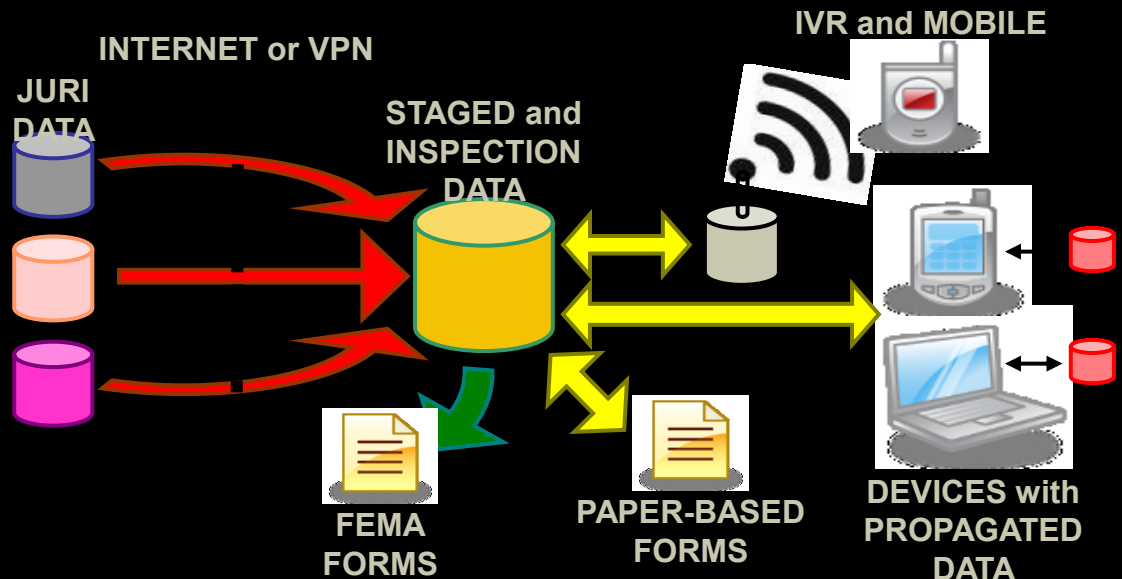
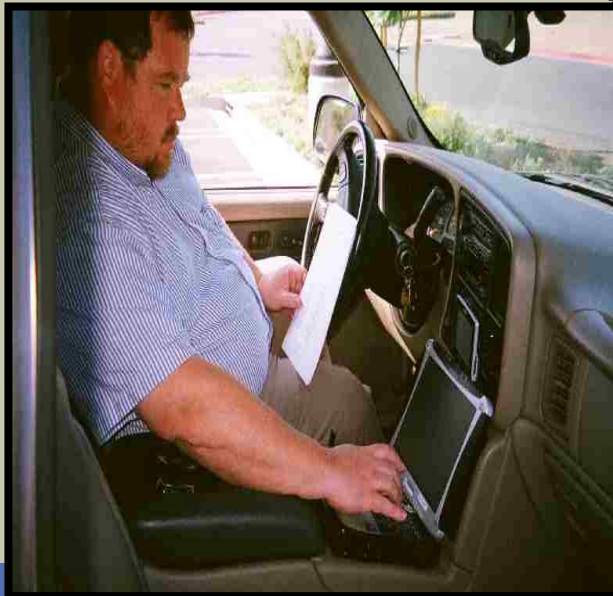
- ICC Guideline for Replicable Buildings - single plan review for residential & commercial structures - reducing time spent in plan review in California from 24 to 8 1/2 weeks in California (FIATECH & ICC)
- Same level of safety! Buildings on tax rolls & hiring 2 months sooner ! Buildings up after a Disaster 2-3 months sooner!



Examples Resiliency & Sustainability



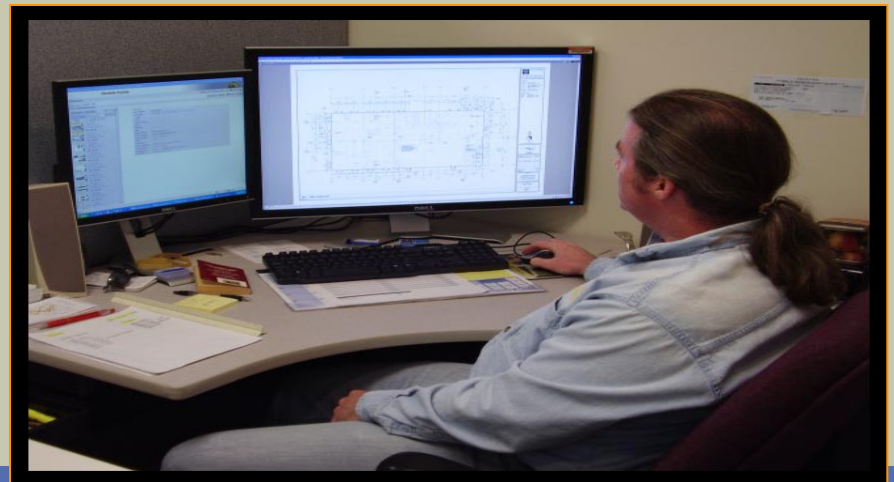
- State of California – 2008 project showed ability to make mobile field inspection devices interoperable to immediately share damage assessment data with State EOC & Build Statewide/Regional networks
- Use of mobile inspection tech saves 30% time!



Examples Resiliency & Sustainability



- Aiding Louisiana in adopting a uniform statewide building code with disaster mitigation provisions & developing Roadmap for Application of IT to strengthen / streamline codes enforcement & speed construction
- Electronic Plan Review & Automated Code Checking Tools – Reduce costs & time by 80% - Green Benefits & enable cities to build secure databases of electronic as-builts to provide to first responders – Portland, ME



RECOMMENDATIONS FROM THESE EFFORTS



- Bring together public & private sector leaders from EM, Economic Development & Sustainability Community to research & establish list of policy actions & best practices that promote sustainability & disaster resiliency - Share across nation & use financial, insurance & tax incentives & legislation to put in place!
- Expand # of jurisdictions streamlined processes & using IT – updated codes, ePlan Review, interoperable mobile inspections & regional damage assessment networks

RECOMMENDATIONS FROM NATIONAL CONFERENCE



- Recommendations from March 2-3 ENR Conference
- 4 of 33

McGraw Hill
CONSTRUCTION ENR

**Recommendations to
Congress, the Administration
and the Private Sector to
Mitigate Impacts of Disasters by
Planning and Building for Resiliency**

Insights Drawn from the ENR
Mitigating Disaster through
Design and Construction Conference

March 2-3, 2011
Washington, DC



RECOMMENDATIONS – Private Sector



- Banking, accounting & insurance – provide financial incentives for retrofitting homes & businesses for both sustainability & disaster resiliency
- Establish a venue for national coordination of changes in codes to better coordinate them to reduce adverse impact on sustainability and disaster resiliency – Lack of predictability keeping owners & developers from putting needed improvements in place.

FORCES DRIVING OWNERS & DEVELOPERS – IMPACTING COSTS, ECONOMIC RECOVERY & DISASTER RESILIENCY



*Things that can be changed through better coordination/holistic approach to regulations, codes & standards

RECOMMENDATIONS TO CONGRESS & ADMINISTRATION



- Congress fund a national Infrastructure Renewal Readiness effort to ensure our codes/standards /permitting systems are able to guide Nation in most consistent & efficient way possible over lifetime of these national assets.



RECOMMENDATIONS TO CONGRESS & ADMINISTRATION



- Study possibility of funding mitigation thru savings incurred from reduced cost of disaster relief
- Review, identify and reduce regulatory barriers to rapid disaster response and recovery -
What will be identified also will aid in more efficient system during non-disaster times!



ACTIONS WE CAN TAKE



Work Together To:

1. Gain Congressional hearings on the Report & its Recommendations to Public & Private Sector
2. Establish national venue for identifying & recommending actions that link sustainability & resiliency
3. Work together to better inform elected officials, public & business community about effectiveness & cost efficiency of investments in mitigation & sustainability
4. End piecemeal & patchwork approaches to resiliency

QUESTIONS & DISCUSSION



- Comments on linking Sustainability & Resiliency
- Comments on recommendations & proposed actions
- What other actions should be taken?
- Timeframes & Stakeholders – who all must be involved? How do we get involved?

“It will be the companies, communities, & countries that are most resilient who will have the competitive advantage over those that are not!” Stephen Flynn -
President Center for National Policy 3/3/11

THANK YOU - CONTACT



- Robert Wible & Associates rcwible@comast.net & www.natlpartnerstreamline.org
- FIATECH at www.FIATECH.org