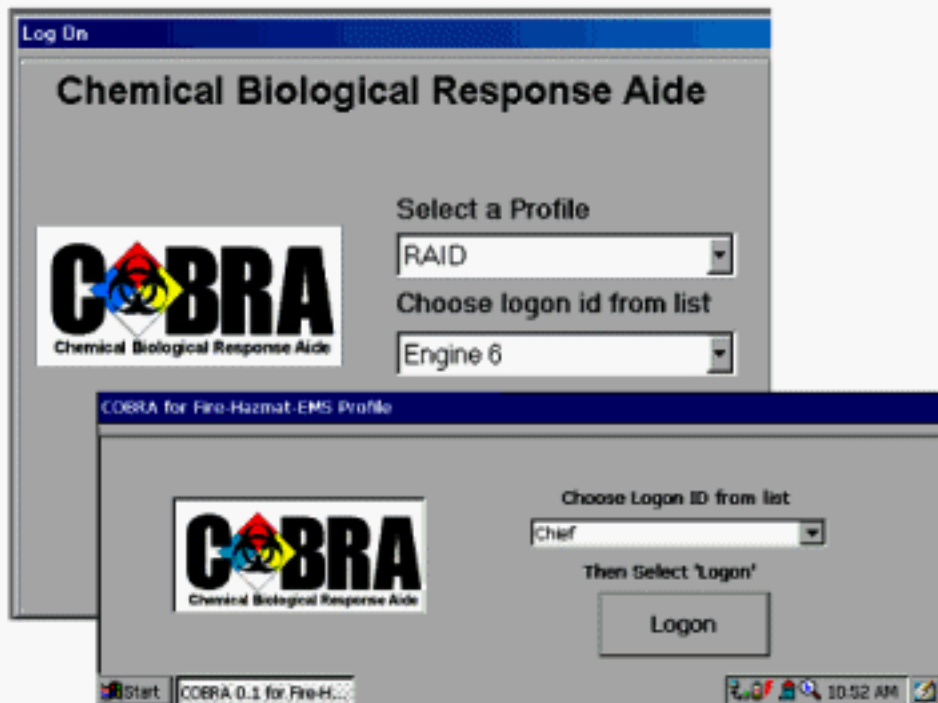




- **COBRA** assists in the response to
  - CB Terrorist Incidents
  - Toxic Industrial Materials (TIM) releases
  - HAZMAT Emergencies
  - Improvised Explosive Devices (IED)
- DGI developed **COBRA** under contract to the DoD Technical Support Working Group (TSWG)
- Initial version became available commercially on 7 December 2000
- Runs on low-end Windows 95, 98, 2000, or NT platforms
  - Pocket PC version (Windows CE) with limited functionality

# Log on and Start-up



- The Profile chosen determines the data, tools, and resources made available to the user inside CoBRA.
- Each Profile can be customized
- Department data, SOPs, checklists, and more can be added to any profile.
- New Profiles can be made, default profiles can be destroyed.
- Different users can use the same set of hardware

# CoBRA Main Screen

The screenshot shows the CoBRA main screen with a menu bar (File, Tools, Help, Start New Incident) and a file tree on the left. The central area displays the CoBRA logo and the text "Chemical Biological Response Aide". A status bar at the bottom shows login information and a timer.

**File Tree:**

- Fire-HAZMAT
  - Guides
  - SOPs
  - Checklists
  - Agent ID
  - Glossary of Terms
  - Incident Rep
  - Explosives
  - Maps
  - User's Guide

**Status Bar:**

Current Login:	Truck 1, Fire-HAZMAT
Incident ID:	Demo
You are browsing:	
This incident is:	00 HH 00 MM 02 SS old.

**CoBRA Logo:** Chemical Biological Response Aide

**TreeView**  
organizes and  
navigates all data,  
tools and  
resources

Data window  
displays selected  
data, tool, or  
resource.

Emergency Response Guidebook - 2000

**Choose ID Method**

- Name
- UNID #
- Guide #

**Choose Search Method**

- IS
- STAR
- CONT

---

Emergency Response Guidebook - 2000

**INITIAL ISOLATION AND PROTECTIVE ACTION DISTANCES**

ID No.	NAME OF MATERIAL	TIH	INITIAL ISOLATION AND PROTECTIVE ACTION DISTANCES					
			SMALL SPILLS (From a small package or small leak from a large package)			LARGE SPILLS (From a large package or from many small packages)		
			Feet ISOLATE in all Directions	Then PROTECT persons Downwind during		Feet ISOLATE in all Directions	Then PROTECT persons Downwind during	
	DAY (Mins)	NIGHT (Mins)	DAY (Mins)	NIGHT (Mins)	DAY (Mins)	NIGHT (Mins)		
1117	Oxone		100	0.2	0.7	900	1.7	4.2
1523	Coal gas		100	0.1	0.1	200	0.2	0.3
1523	Coal gas, compressed		100	0.1	0.1	200	0.2	0.3
1526	Cyanogen		100	0.2	0.7	1000	1.9	4.0

- Full text of DOT 2000 Emergency Response Guidebook
- Fully searchable by name, Guide number, or UNID number
- Ready access to corresponding pages in all the colored sections
- Both PDF and interactive versions are included
- Interactive version available as a standalone software product called

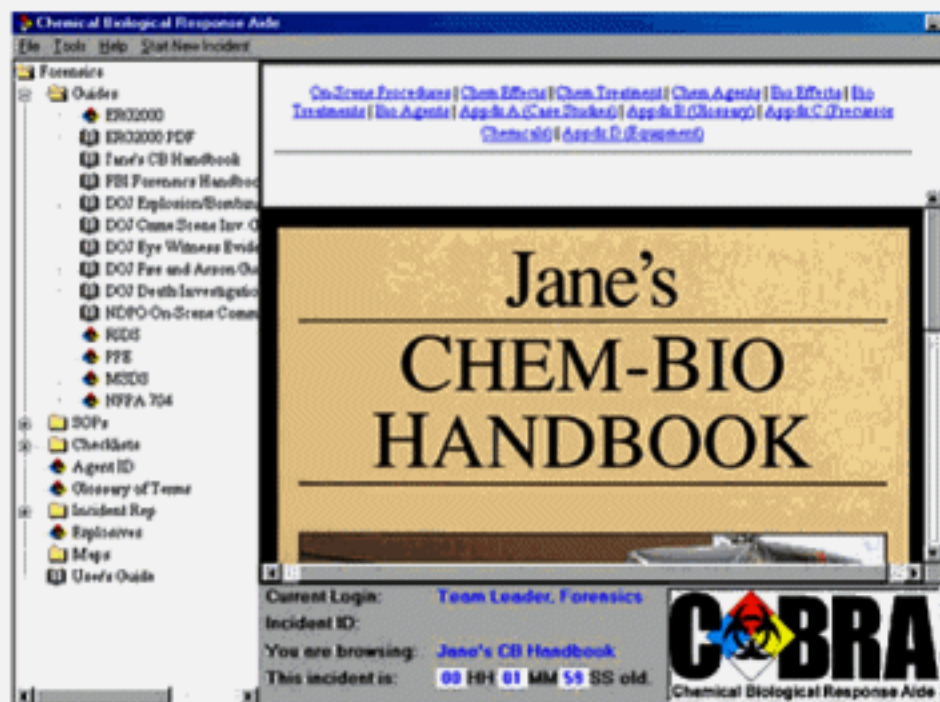
**CABRA** *GUIDE 2000*™





# Jane's Chem-Bio Handbook

- Complete text included in browsable electronic format
- Under special licensing agreement with Jane's
- Provides general response guidelines and data
- One of MANY guides included with CoBRA
- Add your own guides or SOPS to CoBRA





# Response Information Data Sheets (RIDS)

**RIDS**

## Response Information Data Sheets

**Choose Identification Method :**

- NAME
- UN ID#
- NOAA #
- CAS #
- STCC #

**Choose Search Method :**

- IS
- START
- CONT.

**RIDS**

You are browsing : SARIN

Note: Sarin is an EXTREMELY ACTIVE cholinesterase inhibitor.

Warning: Death may occur within 1 to 10 minutes of inhalation exposure to a minute amount of sarin. Immediate decontamination of the smallest drop is essential. Effects may be delayed with dermal exposure. Extreme caution is advised.

Signs and Symptoms of Sarin Exposure: The first indication of exposure to sarin may be a reaction at the point of contact: localized sweating, muscular twitching, and pinpoint eye pupils. Rhinorrhea (running nose), tightness of the chest with shortness of breath, and dimness of vision may be noted. In

**General Descrip.**

**Fire Hazard**

**Fire Fighting**

**Prot. Clothing**

**Non-Fire Resp.**

**Health Hazard**

**Properties**

**First Aid**

**Reactivity**

**Search RIDS Again**

- Powerful data resource for agent characteristics, response actions, and protective gear for over 80,000 chemicals
- Fully searchable
- Reads from the standard CAMEO database, available for free from the EPA website

# Agent ID Tool

Agent ID

Eyes | Nose | Mouth | Gastrointestinal | Lungs | Body | Mental | Color | Odor

Miosis  
 Dim Vision  
 Light Sensitivity  
 Tearing  
 Itchy  
 Burning  
 Eye Pain  
 Conjunctivitis  
 Gritty Feeling  
 Reddening  
 Swelling of Lids  
 Involuntary Closing of Eyes

Done

- Identify chemical agent class from observed signs and symptoms
- Print report showing why the Agent was chosen
- Update the report as further data is obtained
- Begin antidote treatment faster
- Faster treatment results in better patient outcome

Agent ID

Agent -->	Nerve	Tear	Vomiting	Blister
# Matches -->	4	3	3	2
# Non-Matches -->	0	1	1	2
Eyes - Miosis	✓	✗	✗	✗
Nose - Runny Nose	✓	✓	✓	✗
Mouth - Salivation	✓	✓	✓	✗
Lungs - Breathing Difficulty	✓	✓	✓	✓

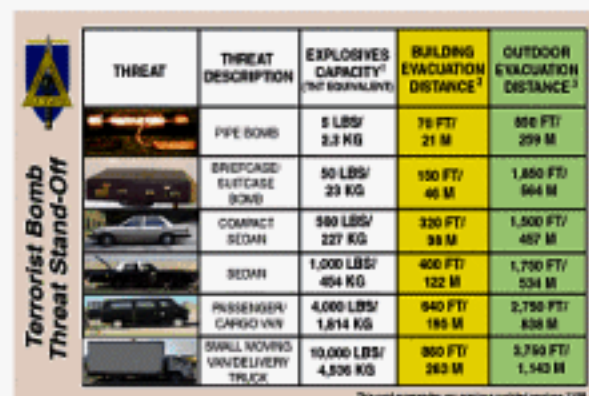
Enter New Signs / Symptoms    Enter Additional Signs / Symptoms








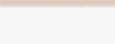


# Improvised Explosive Devices

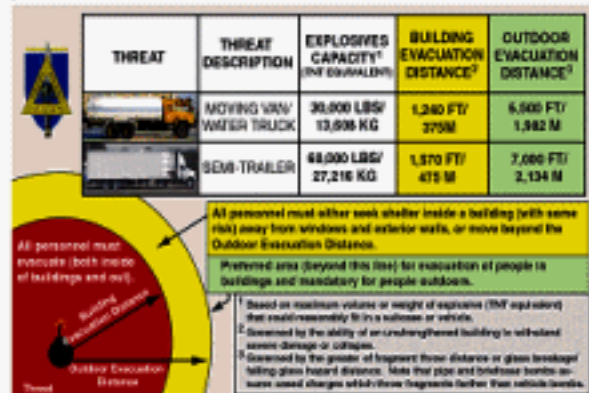
- Reference card gives real world data for various sizes of bombs
- Provides rules-of-thumb for safe stand-off distances
- Data is based on observed open air detonations by the DoD and BATF





**Terrorist Bomb Threat Stand-Off**

THREAT	THREAT DESCRIPTION	EXPLOSIVES CAPACITY <sup>1</sup> (NF EQUIVALENT)	BUILDING EVACUATION DISTANCE <sup>2</sup>	OUTDOOR EVACUATION DISTANCE <sup>3</sup>
	PIPE BOMB	5 LBS/ 2.3 KG	76 FT/ 21 M	300 FT/ 91 M
	BRIEFCASE BOMB	50 LBS/ 23 KG	100 FT/ 30 M	1,800 FT/ 544 M
	COMPACT SEDAN	500 LBS/ 227 KG	320 FT/ 98 M	1,500 FT/ 457 M
	SEDAN	1,000 LBS/ 454 KG	400 FT/ 122 M	1,700 FT/ 514 M
	PASSENGER/ CARGO VAN	4,000 LBS/ 1,814 KG	640 FT/ 195 M	2,750 FT/ 838 M
	SMALL MOVING VAN/ DELIVERY TRUCK	10,000 LBS/ 4,536 KG	800 FT/ 243 M	3,750 FT/ 1,143 M

This card supersedes any previous published versions. 1/08



THREAT	THREAT DESCRIPTION	EXPLOSIVES CAPACITY <sup>1</sup> (NF EQUIVALENT)	BUILDING EVACUATION DISTANCE <sup>2</sup>	OUTDOOR EVACUATION DISTANCE <sup>3</sup>
	MOVING VAN/ WATER TRUCK	30,000 LBS/ 13,608 KG	1,280 FT/ 375 M	5,500 FT/ 1,682 M
	SEMI-TRAILER	48,000 LBS/ 21,716 KG	1,570 FT/ 475 M	7,000 FT/ 2,134 M

**All personnel must evacuate (both inside of buildings and out).**

**Building Evacuation Distance:**

**Outdoor Evacuation Distance:**

**All personnel must either seek shelter inside a building (with some risk) away from windows and exterior walls, or move beyond the Outdoor Evacuation Distance.**

**Preferred area (beyond this line) for evacuation of people is buildings and mandatory for people outdoors.**

<sup>1</sup> Based on maximum volume or weight of explosives (NF equivalent) that could reasonably fit in a suitcase or vehicle.  
<sup>2</sup> Governed by the ability of an un-reinforced building to withstand some damage or collapse.  
<sup>3</sup> Governed by the greater of fragment throw distance or glass breakage/falling glass hazard distance. Note that pipe and brick/mortar bombs or more novel charges will throw fragments farther than vehicle loads.



# Comprehensive Checklists

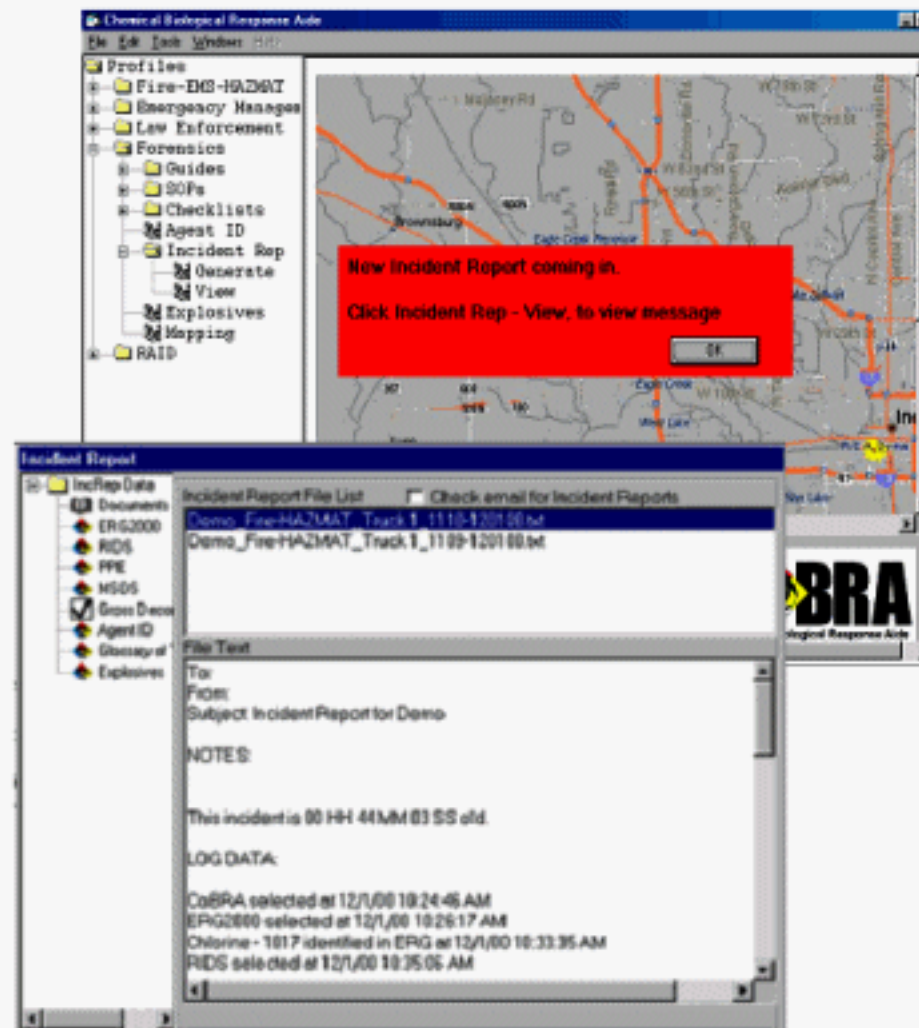
- Distilled from variety of definitive sources
- Fully interactive via point and click or touchscreen
- Can be modified by the user
- Automatically tracked by the Incident Report generator, allowing up to date status reports to chain of command

Checklist Viewer - Gross Decon Checklist

Checklist Item
Gross Decontamination Procedures
Since the exact procedures for decontamination vary by locality, the following procedures are provided only as a general guide. First responders should be knowledgeable about the exact procedures in their area.
Responders in PPE
<input type="checkbox"/> Approach victims only if in appropriate level of PPE
<input type="checkbox"/> Keep victims warm
<input type="checkbox"/> Contain runoff
<input type="checkbox"/> Set up separate decontamination corridors for first responders and victims
<input type="checkbox"/> Divide these corridors into sections for men and women (Do not delay decontamination procedures)
<input type="checkbox"/> If vapor contamination has been determined, victims should be placed outside, in a breeze if possible

# Incident Reporting

- Program automatically logs your actions and compiles a report
- Add comments to the report
- When ready, send the report with a single click via wireless e-mail, LAN, or diskette
- Program alerts you to incoming reports
- Critiques and after action reports are made easier when there is a complete record of events





# Administrator Tools

- **FREE with CoBRA**
- **Modify, add, or remove Profiles and Logons**
- **Modify, add, or remove Checklists**
- **Modify, add, or remove SOPs, tools, folders.**
- **Import your own documents**
  - PPT
  - JPG
  - DOC
  - RTF
  - TXT
  - PDF
  - HTM, HTML
  - GIF
  - More
- **Deploy updates to all CoBRA installations through wireless, automatic update feature**

- The **C<sup>3</sup>BRA** family of products provide a workable resource for First Responders
- **C<sup>3</sup>BRA** is designed to be used in support of routine HAZMAT incidents, but with additional tools for more serious terrorist attacks with chemical or biological agents
- Fully customizable and easy enough to use on scene during response





## How to Contact Us

**BRA** information is available directly from DGI  
(including DEMO Multimedia CDs):

- Phone (toll free): 877-233-5789
- Fax: 703-535-8723
- E-mail: [cobra@cobraguides.com](mailto:cobra@cobraguides.com)
- Website: [www.cobraguides.com](http://www.cobraguides.com)  
-or-  
[www.defensegroupinc.com](http://www.defensegroupinc.com)
- Mailing address: Defense Group Inc.  
2034 Eisenhower Ave., Suite 115  
Alexandria, VA 22314