

CIS105 - Fall 2003

Class 1: Some Basic Unix Commands

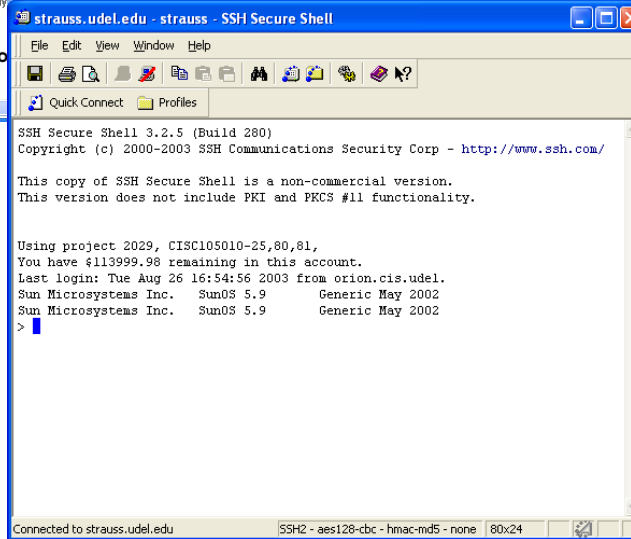
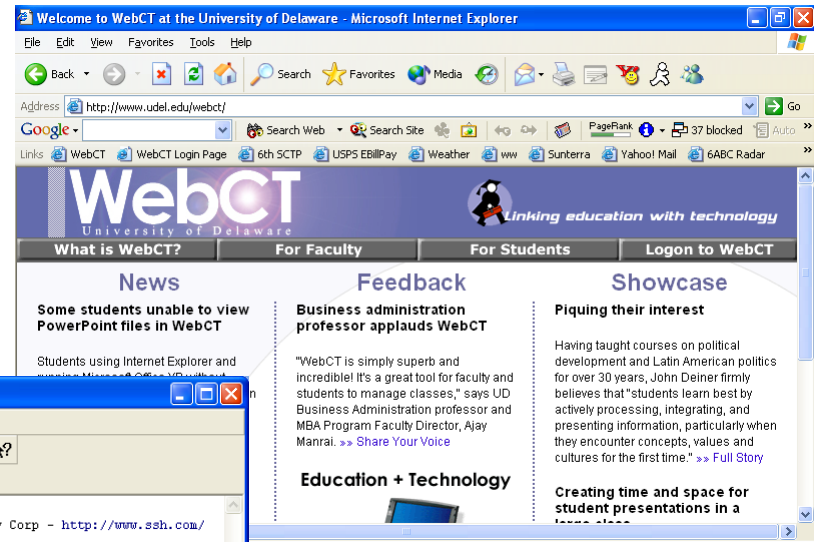
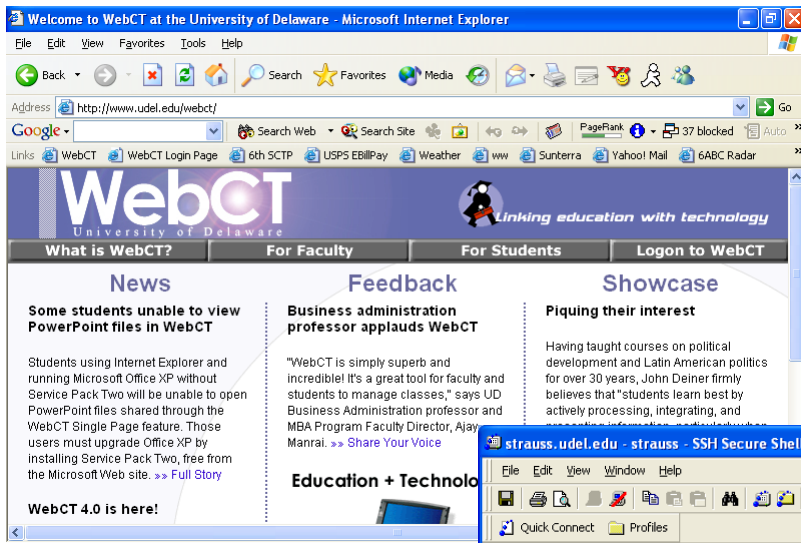
Some really basic Unix commands

If feasible, your instructor will demonstrate these features live in a terminal session; otherwise, you'll see them on the chalkboard.

- logging on
- directory listing: `ls`
- creating a file `cat > filename`
- viewing file contents `cat filename`
- another way to view file contents `more filename`
- deleting a file `rm filename`
- renaming a file `mv file1 file2`
- logging off

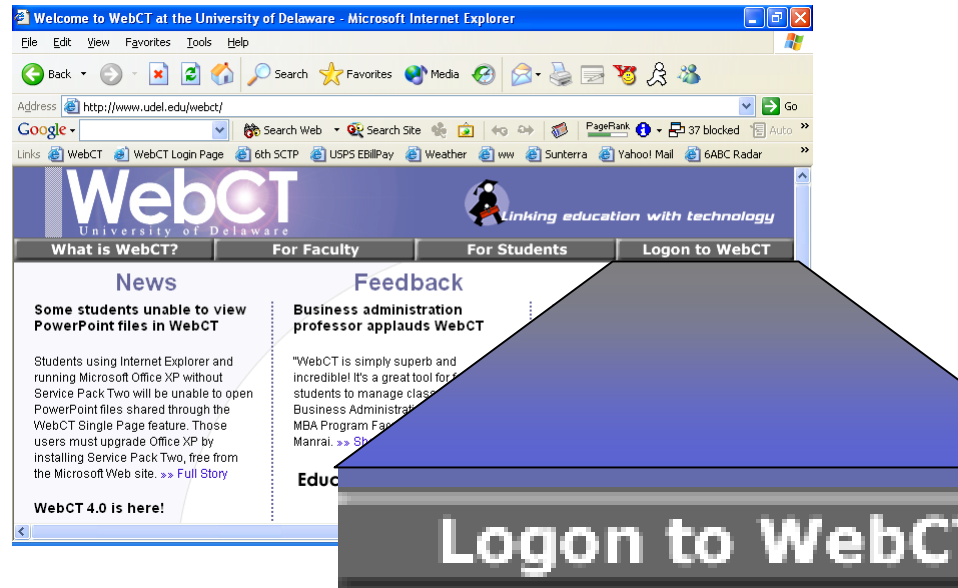
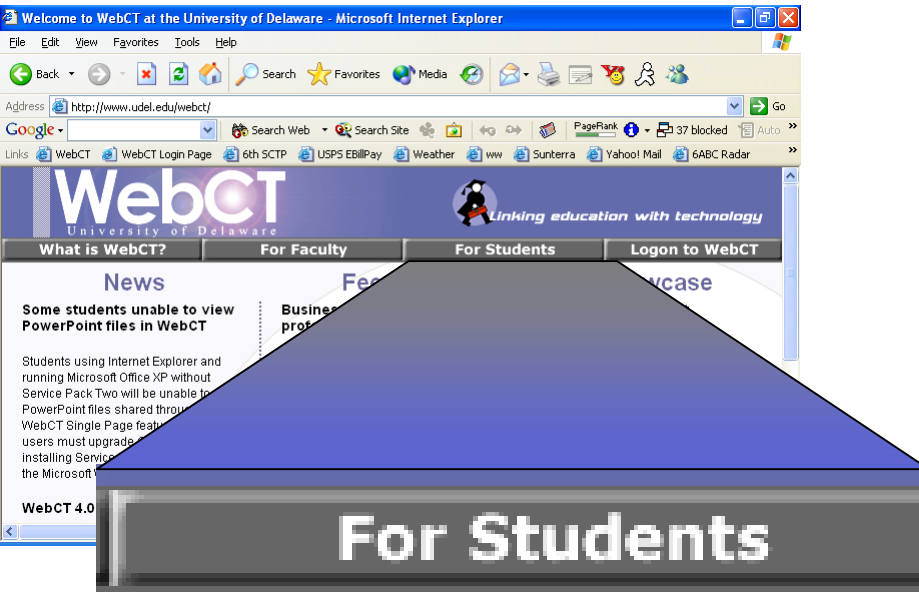
Homework 01

- Submitting a file via WebCT
 - two web browser windows (e.g. netscape, internet explorer)
 - one terminal session to strauss (e.g. xterm, shell, ssh)



Homework 01 - the web browsers

- First web browser: click the “for students” link
- Second web browser: click the “Logon to WebCT” link



The WebCT student help page

FAQs for WebCT Students - Microsoft Internet Explorer

File Edit View Favorites Tools Help

Back Forward Stop Refresh Home Search Favorites Media Print Mail News RSS Yahoo! Messenger People

Address <http://www.udel.edu/webct/student/index.html> Go

Google Search Web Search Site PageRank 37 blocked Auto

Links WebCT WebCT Login Page 6th SCTP USPS EBillPay Weather ww Sunterra Yahoo! Mail 6ABC Radar

WebCT
University of Delaware

Linking education with technology

What is WebCT? For Faculty For Students Login to WebCT

WebCT For Students Help Pages

- Student Help Home
- Setting Your Browser
- Logging on to WebCT
- WebCT Features
- Review All Questions
- Request Assistance

Need help using WebCT at UD?
Please choose a starting point below.

- [I am getting an ACCESS DENIED error](#)
Use this option if clicking on a course link in your MyWebCT page causes an "Access Denied" error message to appear on your screen.

University of Delaware

scroll down

after you scroll down...

FAQs for WebCT Students - Microsoft Internet Explorer

File Edit View Favorites Tools Help

Back Search Favorites Media

 I need help logging on to WebCT.

Use this option to get help with accessing your WebCT courses.

 I need help after I logon to WebCT.

Use this option to get help with specific features within WebCT.

 I am unable to see PowerPoint files in WebCT.

Use this option to upgrade Office XP with a free service pack to see PowerPoint files.

help with submitting an assignment...

 I need help after I logon to WebCT.

click

Use this option to get help with specific features within WebCT.

I would like help with specific WebCT features.

click

Yes

Help me setup plug-ins and other features to access specific types of web content.

Yes

Help me submit an assignment.

then you'll find the helpful instructions

Using WebCT features...

Q2.

Help me submit an assignment.

A2.

1. Once in the Assignments tool, click the appropriate assignment title.



ED Reform Paper

Availability: Immediately - December 9, 2003 11:00am

Things to remember about submitting assignments in WebCT

- First *upload*, then *submit*.
If you upload, but don't then submit, your TA or instructor won't see your files.
 - To turn in your stuff, you must submit.
- Where is your web browser running?
 - on the Unix system?
 - lucky you: you can move files directly from your Unix account to WebCT via your browser.
 - locally (e.g. on your PC or workstation?)
 - I'm afraid it's not that simple.
 - **First** you need to transfer the file from strauss to your local machine, **then** upload using WebCT.

