

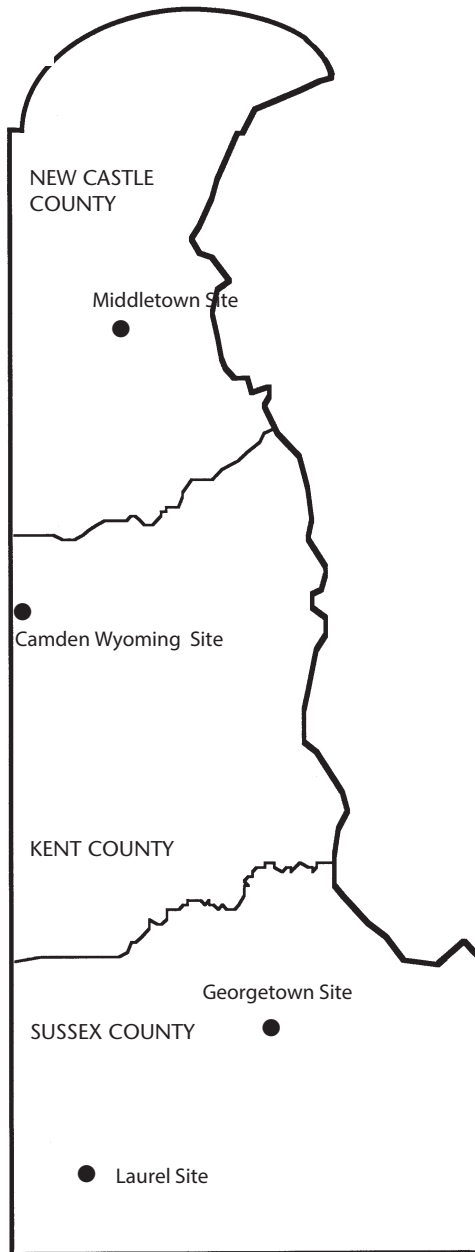
DELAWARE HYBRID FIELD CORN PERFORMANCE TRIALS

2021



University of Delaware
College of Agriculture and Natural Resources
Agricultural Experiment Station
Cooperative Extension
Newark, DE 19716-2170

Test plot locations



October 2021

Commercial companies or products are mentioned in this publication solely for the purpose of providing specific information. Mention of a company or product does not constitute a guarantee or warranty of products by the Agricultural Experiment Station or Delaware Cooperative Extension or an endorsement over products of other companies not mentioned.

Cooperative Extension Education in Agriculture and Home Economics, University of Delaware, Delaware State University and the United States Department of Agriculture cooperating. Calvin Keeler, Dean and Director. Distributed in furtherance of Acts of Congress of May 8 and June 30, 1914. It is the policy of the Delaware Cooperative Extension System that no person shall be subjected to discrimination on the grounds of race, color, sex, disability, age, or national origin.

DELAWARE HYBRID FIELD CORN PERFORMANCE TRIALS

Teclemariam Weldekidan

Scientist

Department of Plant and Soil Sciences

Dr. Erin Sparks

Assistant Professor

Department of Plant and Soil Sciences

Acknowledgments: Appreciation is extended to Brian Hearn and Gunnar Isaacs, Crops Research Coordinators, Buddy Willey and Kyle Mitchell, for their assistance in planting, harvesting and managing the trials. The authors are indebted to Emerson Farms, Thomas Family Farms and Plum Creek Farms, LLC for providing land for these trials. We also thank Gail Ferry for her assistance in preparing this report.

DELAWARE HYBRID FIELD CORN PERFORMANCE TRIALS – 2021

The 2021 Delaware hybrid field corn trials were conducted jointly by the University of Delaware's Agricultural Experiment Station and the Delaware Cooperative Extension Service, College of Agriculture and Natural Resources. Forty-seven hybrids were evaluated at four locations: Emerson Farms at **Middletown**, DE (dryland), Thomas Family Farms at **Camden Wyoming**, DE (center pivot irrigation), Plum Creek Farms, LLC at **Laurel**, DE (center pivot irrigation) and Carvel Research & Education Center at **Georgetown**, DE (lateral move irrigation). Hybrids were divided into three relative maturity groups; early 101-110 (16 entries), early-medium 111-114 (19 entries) and medium 115-120 days (12 entries). The hybrids tested are being sold for commercial planting or are on a clear track for commercial planting (e.g. within one or two years of access to farmers). Plans and rules for entering these trials are available upon request.

Methodology

A randomized, complete block design with four replications was used in all tests. Four-row plots (experimental units) were planted with a Monosem Step 4 controls air planter. The center two rows of each plot were harvested with a small plot combine. Tillage and cultural practices are noted in Table 1. Temperature and rainfall information is taken at or nearest test locations from DEOS (<http://www.deos.udel.edu>). The raw data used to plot the Growing Degree Day (GDD) and rainfall graphs is presented in Table 2. The GDD was calculated by subtracting 50 from the average daily temperature ($(\text{Max. Temp} + \text{Min. Temp})/2 - 50$). If the daily high temperature was greater than 86 degrees Fahrenheit, then 86 degrees is used and if the daily low was less than 50 degrees then 50 degrees Fahrenheit was used to calculate the average. The weather data for Emerson Farms, Middletown was taken from Townsend, DE-REC, for Thomas Family Farms, Camden Wyoming from Dover, DE-SFS, for Plum Creek Farms, LLC, Laurel from Laurel, DE Airport and for the Carvel Research & Education Center, Georgetown was taken from DE-REC stations. Data were analyzed by analysis of variance and hybrids were ranked by yield in each test.

Traits Measured

- Yield was recorded in bushels per acre on the basis of 56 lb/bu and adjusted to 15.5% moisture.
- Percent moisture is the actual percentage of grain moisture at harvest determined by a grain analysis computer (HarvestMaster Classic GrainGage from Juniper Systems).
- Yield/Moisture (Y/M) is the yield in bu/A (adjusted to 15.5% moisture) divided by the grain harvest moisture.
- Test weight is measured in pounds per bushel determined by a grain analysis computer (HarvestMaster Classic GrainGage from Juniper Systems).
- Final population is the plant population extrapolated from plot data for each hybrid to an acre scale taken at flowering time.

- Percent stalk lodging is the percentage of plants that were broken below the ear.
- Percent root lodging is the percentage of plants that had lodged more than 30°.

C.V. and L.S.D.

The coefficient of variation (C.V.) is a measurement of the amount of uncontrollable variability due to differences in the soil, weather, fertility, etc. A C.V. below 15% is considered good. Please note that the C.V. is expected to be higher at dryland locations.

The least significant difference (L.S.D.; computed at a 5% level of probability) is a tool to determine if two average values are significantly different. The difference between two hybrids must exceed the L.S.D. value to be considered significantly different from one another. Example for yield: L.S.D. = 25 bu/A, hybrid X = 120 bu/A, hybrid Y = 150 bu/A. The difference between X and Y (30 bu/A) exceeds the L.S.D. (25 bu/A). Therefore, hybrid X has a significantly lower yield performance than hybrid Y.

Note

When reviewing the enclosed data, it is important to note moisture percentages when comparing hybrids within the same maturity group. Comparisons should not be made between hybrids of different maturity groups since these are separate tests. These results are based on one year's data only and should be considered as preliminary results. Hybrid performance may vary from location to location and from year to year because of differences in rainfall, temperature, soil type, soil fertility, diseases, insects, and a variety of other factors. Growers will obtain the best estimate of individual hybrid performance by looking at performance data over several years and across locations. We have provided a column for each maturity group with the average performance of hybrids over all locations.

HOW TO BEST USE CORN HYBRID PERFORMANCE TRIAL INFORMATION

Information presented in this summary may be useful in selecting corn hybrids for production in Delaware. To maximize the usefulness of this information, follow these suggestions:

1. Select the test location that best represents your production location. Generally, corn hybrids are widely adapted across Delaware but certain soil or climatic conditions, cultural practices, or insect/disease problems may limit the choice of an entry.
2. Multiple-year average (means) across the greatest number of years are the best predictors of performance. Refer to previous test reports for information to evaluate corn hybrids which are of interest to you. Comparison between your selected hybrid and the grand mean for that maturity group will be helpful in identifying superior hybrids. When evaluating test results

across years or locations, we recommend that you give preference to trials with a C.V. less than 15%. Growers should also consider the cultural practices used for each trial.

3. Check the grand mean for the long-term averages and compare with your own production experience. If your yields have been consistently below these grand mean levels, you should evaluate each part of your management system for potential areas of improvement.
4. Using long-term averages, select the hybrid or hybrids with which you are best acquainted or are currently using on your farm. Use these hybrids as “bench marks” when comparing new hybrids. Identify those hybrids which have over years produced yields higher than your selected bench mark hybrid. Consider hybrids with high yields and lower grain moisture (high Y/M numbers). Hybrids with high stalk and root lodging percentages should be avoided.
5. We are including one or more corn hybrids to act as ‘**Check**’ hybrids for producers. We have tried to select check hybrids which will represent the newest and best genetics coming out of commercial programs.

Summary of Results

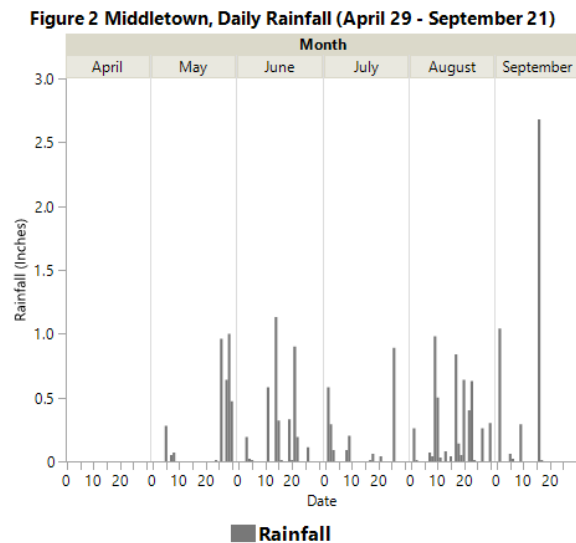
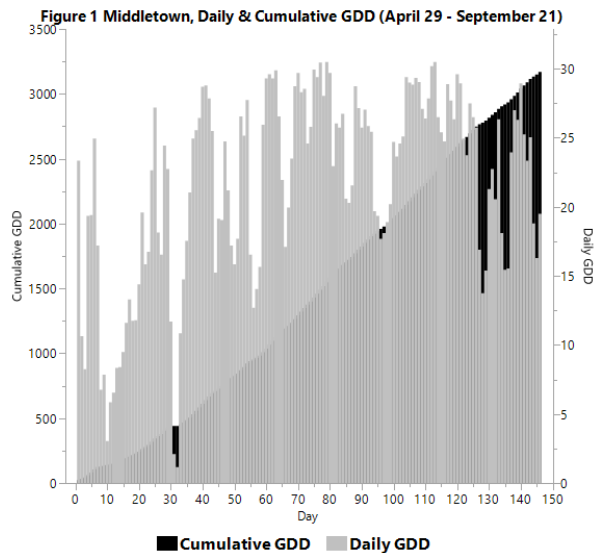
The 2021 growing season was characterized by warm weather and adequate moisture conditions during planting. We had an extended drought period in July during the flowering period and this had severely impacted the yield performance for the Middletown dryland location. The Middletown dryland location received a total of 0.4 inches of rain from July 4-25, which is at the time of flowering period. The wind and rain from the storm of hurricane Ida did not produce any stalk or root damage. There was minor stalk lodging and not any root lodging.

In 2021, the Delaware corn hybrid performance yield tests averaged 260, 269 and 266 bu/A compared to the 2020 yield which averaged 198, 200 and 215 bu/A across the three irrigated locations for the early, early-medium and medium maturity groups, respectively. In the dryland location, average yields in 2021 were, 116, 117 and 121 bu/A for the early, early-medium and medium maturity groups, respectively. The corresponding average yields in 2020 was 182, 192 and 198 bu/A for the early, early-medium and medium maturity groups, respectively. The results of our yield test shows that the grain yield averaged across the irrigated locations and maturity groups in 2021 was 29.9% higher than in 2020, whereas in the dryland locations it was 38% less than in 2020. The grain yield averaged across all locations and maturity groups was 15% higher than in 2020.

Middletown: The average soil temperature at Townsend, DE-REC the nearest station to Emerson Farms, New Castle County; dryland, in April was 53.9 °F. A 50 °F soil temperature is considered the minimum temperature for corn germination. A Growing Degree Days

(GDD) of 90 to 120 is required for corn germination. A 140.8 GDD was accumulated in the ten days after planting (April 29) at this station and was enough for the germination and growth. The cumulative GDD for the hybrids with the relative maturity of 101-110, 111-114 and 115-120 was 2065-2314, 2342-2429 and 2454-2591, respectively (Figure 1).

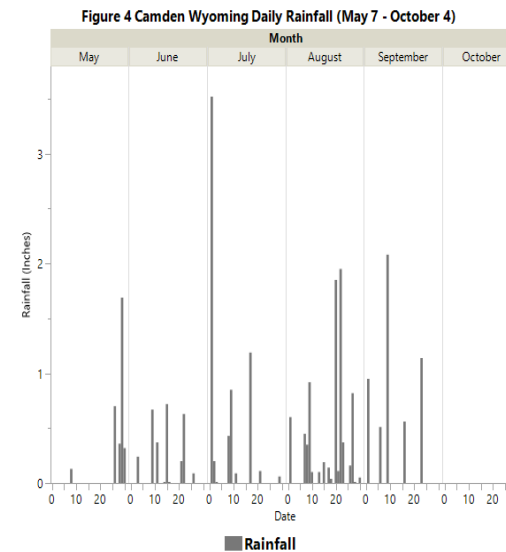
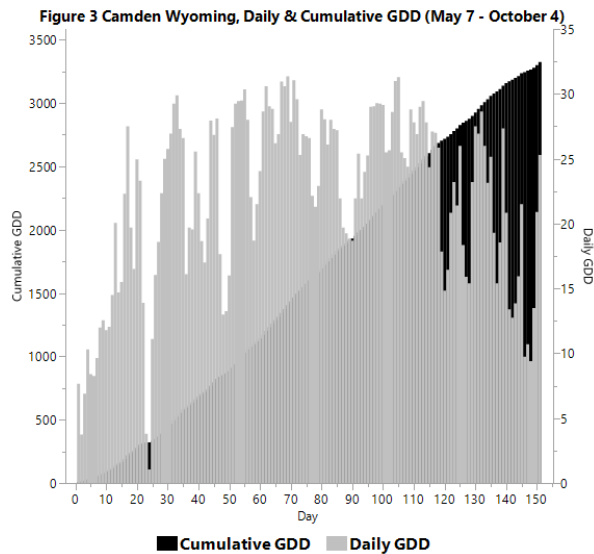
Middletown, the dryland location received a total of 3.48, 3.8, 2.25 and 5.28 inches of rainfall in May, June, July and August, respectively. It received 0.4, 0 and 0.11 inches of rainfall from July 4-25, July 10-16 and July 10-25, respectively. This dry period without rainfall coincided with flowering time and has affected the pollination. A total of 0.04 inches of rainfall was received between July 19-25 and 0.89 inches of rainfall was received on July 26 and this rainfall might have helped the late maturity group. This location have received 1.86 inches of rainfall from August 1-10 and this amount of rainfall might have helped for the ear development of the late maturity group. The daily rainfall received from planting to harvest period shows days without or with some amount of rain (Figure 2). This dryland location received very low rainfall during the flowering period and ear development. The yields were highly impacted by the drought.



Yields at the Middletown dryland location averaged 116, 117 and 121 bu/A for the early, early-medium and medium maturity groups, respectively, compared to the check means of 114, 127 and 137 bu/A, respectively (Tables 3, 4 and 5). There were significant differences among hybrids for yield, grain moisture, yield/moisture and test weight for the early, early-medium and medium

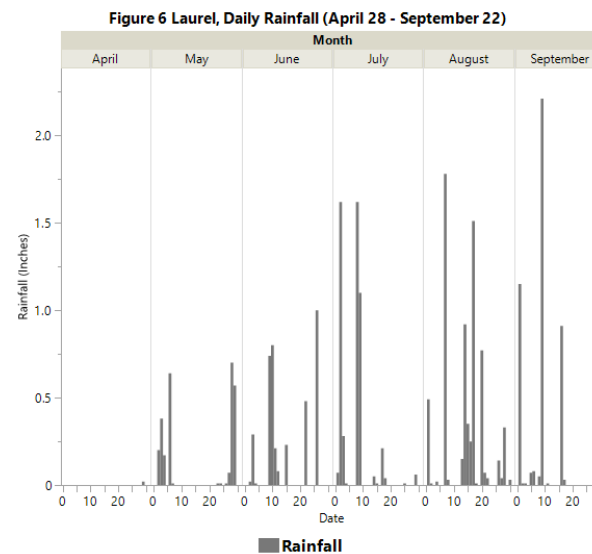
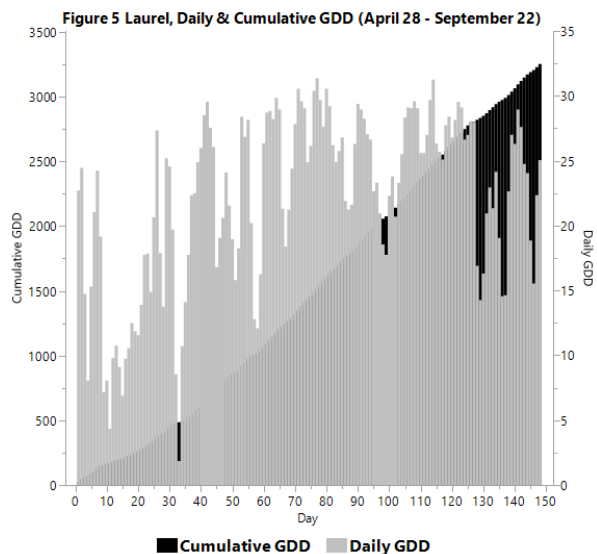
maturity groups. There was a significant difference in plant population for the early and early-medium maturity groups. In the early maturity group, there was significant difference among hybrids for stalk lodging. Overall there was some stalk lodging on a few of the hybrids but no root lodging across all the maturity groups.

Camden Wyoming: The average soil temperature at Dover, DE-SFS the nearest station to Thomas Family Farms, Kent County irrigated location in April was 56.5 °F and 65.1°F in May. This soil temperature is above the minimum 50 °F soil temperature required for corn germination. The temperature at planting (May 7) for this location was in the low 50 to high 60. A Growing Degree Days (GDD) of 90 to 120 is required for corn germination. Even though this location accumulated 91.25 GDD in the first ten days after planting (May 7) the germination was delayed. The cumulative GDD for the hybrids with relative maturity of 101-110, 111-114 and 115-120 was 2220-2468, 2495-2581 and 2605-2718, respectively (Figure 3). Camden Wyoming received a total of 3.46, 2.94, 6.46 and 8.21 inches of rainfall in May, June, July and August, respectively (Figure 4).



Yields at the Camden Wyoming location averaged 259, 266 and 263 bu/A for the early, early-medium and medium maturity groups, respectively, compared to the check means of 258, 261 and 269 bu/A, respectively (Tables 6, 7 and 8). There were significant differences among hybrids for yield, grain moisture, yield/moisture, test weight and plant population for all the maturity groups. There was also a significant difference in stalk lodging for the medium maturity group. Overall there was a minor stalk lodging on a few of the hybrids but no root lodging across all the maturity groups.

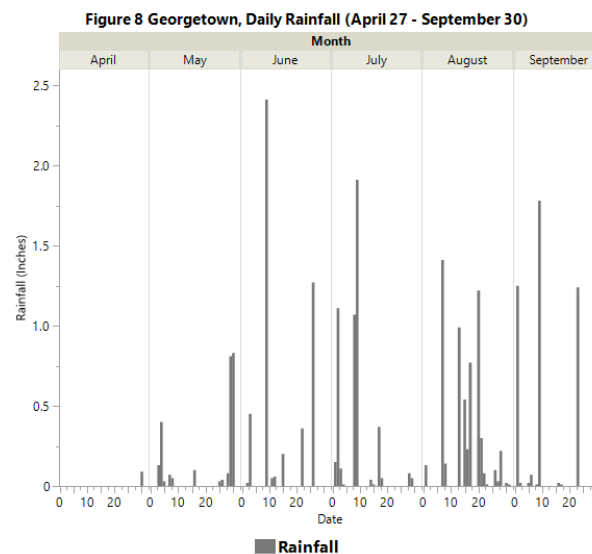
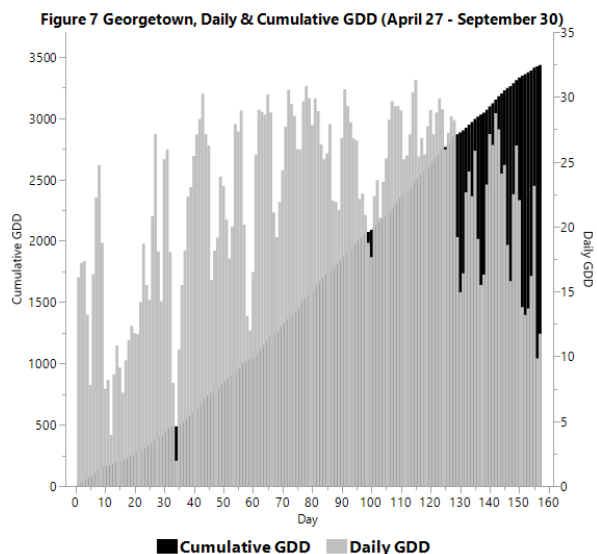
Laurel: The average soil temperature at Laurel, DE-Airport the nearest station to Plum Creek Farms, LLC, Sussex County; irrigated location in April was 56.9 °F. This soil temperature is above the minimum 50 °F soil temperature required for corn germination. A 164.9 GDD was accumulated in the ten days after planting (April 28) at this station and was enough for the germination and growth. The cumulative GDD for the hybrids with the relative maturity of 101-110, 111-114 and 115-120 was 2123-2363, 2389-2477 and 2503-2637, respectively (Figure 5). Laurel received a total of 2.77, 3.86, 5.08 and 6.94 inches of rainfall in May, June, July and August, respectively (Figure 6).



Yields at the Laurel location averaged 279, 285 and 287 bu/A for the early, early-medium and medium maturity groups, respectively, compared to the check means of 279, 270 and 296 bu/A, respectively (Tables 9, 10, and 11). There were significant differences among hybrids for yield, grain moisture, yield/moisture, test weight and plant population across all the maturity groups. In this testing location there was very minor stalk lodging on few hybrids but no root lodging.

Georgetown: The average soil temperature at Georgetown, Carvel Research & Education Center, Sussex County; irrigated location in April was 55.0 °F. This soil temperature is above the minimum 50 °F soil temperature required for corn germination. A 161.25 GDD

was accumulated in the ten days after planting (April 27) at this station and was enough for the germination and growth. The cumulative GDD for the hybrids with the relative maturity of 101-110, 111-114 and 115-120 was 2112-2351, 2376-2459 and 2490-2625, respectively (Figure 7). Georgetown received a total of 2.57, 4.82, 4.96 and 6.2 inches of rainfall in May, June, July and August, respectively (Figure 8).



Yields at the Georgetown location averaged 241, 256 and 247 bu/A for the early, early-medium and medium maturity groups, respectively, compared to the check means of 241, 257 and 257 bu/A, respectively (Tables 12, 13 and 14). There were significant differences among hybrids in yield, yield/moisture and plant population in the early-medium maturity group. There was significant difference in stalk lodging across all maturity groups. Also there was a significant difference in test weight for the medium maturity group. Overall very few hybrids had some stalk lodging but there was no any root lodging.

The grain yield rankings of hybrids across locations are provided in each table. A pooled yield average and yield ranks are also provided for each hybrid. There are a few hybrids that had high yield rankings across locations. We encourage growers to give strong consideration to hybrids with high average performance across locations and years and to use such hybrids as benchmarks for future hybrid decisions. However, growers should recognize that the relative performance of some hybrids might differ across environments. Careful hybrid selection should help stabilize yield performance in Delaware.

Table 1. Experimental details and cultural practices

	Emerson Farms – Middletown (Dryland)	Thomas Family Farms – Camden Wyoming (Irrigated)	Plum Creek Farms, LLC – Laurel (Irrigated)	Carvel REC - Georgetown (Irrigated)
Number of entries	47	47	47	47
Number of maturities	3	3	3	3
Population plants/A	26,000	30,000	33,000	33,000
Row length	17.5'	17.5'	17.5'	17.5'
Number of rows harvested	Center two rows	Center two rows	Center two rows	Center two rows
Number of replications	4	4	4	4
Planting date	April 29	May 7	April 28	April 27
Harvest date	September 21	October 4	September 22	September 30
Soil type	Matapeake silt loam	Sandy loam	Sandy loam	Rosedale loamy sand
Previous crop	Soybean	Soybean	Sweet corn	Soybean
Cover crop	None	None	Rye	None
Tillage practices	Ripped, field cultivator	Ripped, field cultivator	No till	Chisel plow, disk, field cultivator
Cultivation	None	None	None	None
Fertilization	15 gallons/A of 20-10-0-1s (N-P ₂ O ₅ -K ₂ O-s) starter 2"x2" (32 lb N & 36 lb P). At V4 –V5 stage side-dressed with 70 gallons/A of 27-0-0-6s (203 lb N).	3 tons/A of chicken manure. 15 gallons/A of 20-10-0-1s (N-P ₂ O ₅ K ₂ O) starter 2"x2" (32 lb N & 36 lb P). At V4-V5 stage side-dressed with 70 gallons/A of 27-0-0-6s (203 lb N) and 10 GPA of 20-40-0-3.13B (30 lbs N ₂) fertigated.	3 tons/A of chicken manure. 15 gallons/A of 20-10-0-1s (N-P ₂ O ₅ K ₂ O) starter 2"x2" (32 lb N & 36 lb P). At V4 –V5 stage side-dressed with 70 gallons/A of 27-0-0-6s (203 lb N) and 30 lbs/A of 32% nitrogen was fertigated.	15 gallons/A of 20-10-0-1s (N-P ₂ O ₅ -K ₂ O) starter 2"x2" (32 lb N & 36 lb P). At V4 –V5 stage side-dressed with 70 gallons/A of 27-0-0-6s (203 lb N).
Herbicide	Lexar 3.5 qt/A, simazine 1 qt/A and roundup 1 qt/A pre-emergence	Lexar 3.5 qt/A and simazine 1 qt/A pre-emergence.	Lexar 3 qt/A, simazine 1 qt/A and roundup 1 qt/A pre-emergence.	Lexar 3 qt/A and simazine 1 qt/A pre-emrgence.
Insecticide	Sniper LFR 5 oz/A at planting	Sniper LFR 5 oz/A at planting	Sniper LFR 5 oz/A at planting	Sniper LFR 5 oz/A at planting
Irrigation	None	Center pivot	Center pivot	Lateral move

Delaware corn hybrid variety performance trial entries

Company/Brand	Hybrid	Trait	Seed treatment	RMD	Maturity Group
Seed Consultants	SC1071AM	AM	LumiGEN	107	Early
Seed Consultants	SC1087AM	AM	LumiGEN	108	Early
Seed Consultants	SC1092AM	AM	LumiGEN	109	Early
LG Seeds	LG5590VT2RIB	VT2PRORIB	Acceleron P/V 500	110	Early
NK	NK1082-5222A-EZ1	Agrisure 5222	Avicta Complete Corn + Vibrance	110	Early
MorCorn	MC3952	VT2P	Acceleron 1250	109	Early
Mid-Atlantic Seeds	MA8039	VT2RIB	A250	103	Early
Mid-Atlantic Seeds	MA8042	SS		104	Early
Mid-Atlantic Seeds	MA8064	VT2RIB		106	Early
Mid-Atlantic Seeds	MA8091	VT2RIB	A250	109	Early
Mid-Atlantic Seeds	MA7103HD	DCEZ		110	Early
Mid-Atlantic Seeds	MA8106	VT2PRIB	A250	110	Early
AgVenture	AV4104AM	YGCB, I-IXL LL, RR2		104	Early
AgVenture	AV5107AM	YGCB, I-IXL LL, RR2		107	Early
AgVenture	AV7408AM	YGCB, I-IXL LL, RR2	Poncho 1250	108	Early
AgVenture	AV9610AM	YGCB, I-IXL LL, RR2	Poncho 1250	110	Early
DeKalb	DKC62-53RIB (Check)	VTDoublePro		112	Early
DeKalb	DKC62-20RIB (Check)	VT Double Pro		112	Early
Seed Consultants	SC1112AM	AM	LumiGEN	111	Early-Medium
Seed Consultants	SC1122Q	Qrome	LumiGEN	112	Early-Medium
Seed Consultants	SC1141AM	AM	LumiGEN	114	Early-Medium
LG Seeds	LG5643VT2PRO	VT2PRO	Acceleron P/V 500	114	Early-Medium
LG Seeds	LG64C30TRC	Tricepta	Acceleron P/V 500	114	Early-Medium
MorCorn	MC4161	VT2P	Acceleron 1250	111	Early-Medium
MorCorn	MC4255	VT2P	Acceleron 1250	112	Early-Medium
MorCorn	MC4311	Trecepta	Acceleron 1250	113	Early-Medium
MorCorn	MC4319	VT2P	Acceleron 1250	113	Early-Medium
Local Seed	LC1398 VT2PRIB	VT2P	Radius 500	113	Early-Medium
Local Seed	LC1307 TCRIB	Trecepta	Radius 500	113	Early-Medium
Local Seed	LC1497 DGVT2PRIB	VT2P	Radius 500	114	Early-Medium

Local Seed	LC1407 VT2PRIB	VT2P	Radius 500	114	Early-Medium
Mid-Atlantic Seeds	MA8128	VT2PRIB	A250	112	Early-Medium
Mid-Atlantic Seeds	MA8110	TREC		113	Early-Medium
Mid-Atlantic Seeds	MA8141	DGVT2PRIB	A250	114	Early-Medium
Mid-Atlantic Seeds	MA8132	VT2PRIB		113	Early-Medium
Dyna-Gro	D54VC14		Acceleron 500	114	Early-Medium
AgVenture	AV4313AM	YGCB, HX1, LL, RR2	Poncho 1250	113	Early-Medium
DeKalb	DKC64-65RIB (Check)	VT DoublePro		114	Early-Medium
DeKalb	DKC65-95RIB (Check)	VT DoublePro		115	Early-Medium
Seed Consultants	SC1158AM	AM	LumiGEN	115	Medium
Seed Consultants	SC1188AM	AM	LumiGEN	118	Medium
LG Seeds	LG66C44VT2PRO	VT2PRO	Acceleron P/V 500	116	Medium
NK	NK1667-3110	3110	Avicta Complete Corn + Vibrance	116	Medium
NK	NK1748-3110	3110	Avicta Complete Corn + Vibrance	117	Medium
MorCorn	MC4670	Trecepta	Acceleron 1250	116	Medium
MorCorn	MC4725	VT2P	Acceleron 1250	117	Medium
Mid-Atlantic Seeds	MA5155	GT3VIP	C250	115	Medium
Mid-Atlantic Seeds	MA8158	SS	A500	115	Medium
Dyna-Gro	D55VC80	VT2Pro	Acceleron 500	115	Medium
AgVenture	AV3715AM	YGCB, I-IXL LL, RR2		115	Medium
AgVenture	AV3917AM	YGCB, I-IXL LL, RR2		117	Medium
DeKalb	DKC70-27RIB (Check)	VTDoublePro		120	Medium
Dyna-Gro	D58VC65 (Check)	VT Double Pro		118	Medium

Trait	Primary insect targets + Herbicide tolerance
Agrisure 5122	Black cutworm, corn earworm, European corn borer, fall armyworm, stalk borer, sugarcane borer, Southwestern corn borer and corn rootworm
Agrisure 5222	Black cutworm, corn earworm, European corn borer, fall armyworm, stalk borer, sugarcane borer, Southwestern corn borer, true armyworm, Western bean cutworm and corn rootworm
Agrisure Viptera 3110	Black cutworm, corn earworm, European corn borer, fall armyworm, stalk borer, sugarcane borer, Southwestern corn borer, true armyworm, Western bean cutworm, Glyphosate roundup ready 2 & Liberty link
Agrisure Duracade 5122 EZ Refuge DCEZ	Black cutworm, corn earworm, European corn borer, fall armyworm, root worm, Southwestern corn borer, true armyworm, corn rootworm, Glyphosate roundup
AM/LL/RR	Black cutworm, corn earworm, European corn borer, fall armyworm, stalk borer, sugarcane borer, and Southwestern corn borer; Liberty Link -glufosinate and Roundup Ready
DGV2P	Contains double mode of action protection against corn earworm and other above-ground pests, including European corn borers, Southwestern corn borers and fall armyworm and DroughtGard
GT3VIP	Corn borer, corn rootworm and Glyphosate resistance
Q/LL/RR	Above and below ground insect protection for European corn borer, fall armyworm, Western bean cutworm and Western corn rootworm; Liberty Link -glufosinate and Roundup Ready.
Qrome	European corn borer, fall armyworm, Western bean cutworm and Western corn rootworm.
SmartStax	Corn earworm, European corn borer, black cutworm, Southwestern corn borer and fall armyworm
STX RIB	Black cutworm, corn earworm, European corn borer, fall armyworm, stalk borer, sugarcane borer and Southwestern corn borer
Trecepta	European and Southwestern corn borers, fall armyworm, Western bean cutworm, black cutworm and corn earworm
VT2PRO	Contains double mode of action protection against corn earworm and other above-ground pests, including European corn borers, Southwestern corn borers and fall armyworm.
YGCB, HX1,LL,RR2	(Optimum® Intrasect®) - Contains the YieldGard® Corn Borer gene and Herculex® I gene for resistance to corn borer. Liberty Link -glufosinate and Roundup Ready 2-Glyphosate

Seed company contact

Company	Address	Phone	Web
Agventure	7300 NW 62nd Ave Johnston, IA 50131	515-535-0800	www.agventure.com
Dyna_Gro	3005 Rocky Mountain Ave. Loveland, CO 80538	716-912-5495	www.dynagro.com
East Coast Seed	17741 Davis Rd Georgetown, DE 19947	302-856-7018	www.eastcoastseed.com
Mid-Atlantic Seeds	204 St. Charles Way #163E York, PA 17402	717-852-8894	www.midatlanticseeds.com
LG Seeds	1122 E 1169th St. Westfield, IN 46074	217-972-7363	www.lgseeds.com
Local Seed	39 Seeds Lane Jersey Shore, PA 17740	570-753-5503	www.localseed.com
MorCorn	1725 Windward Concourse Suite 410 Alpharetta, GA 30005	478-957-9865	www.morcorn-us.com
Phoenix	201 E. John Carpenter Fwy, Suite 660 Irving, TX 75062	855-210-0569	www.phoenix-us.com
Seed Consultants, Inc.	648 Miami trace Road SW, Washington Court House, OH 43160	740-837-0364	www.seedconsultants.com
Syngenta	4013 Fairmount Pike, Signal Mountain, TN 37377	717-951-2730	www.syngenta-us.com

Table 2. Growing degree day (GDD) and rainfall at or nearest test locations for the 2021 Delaware corn hybrid performance test

Station	Month	Date	Day	Daily GDD	Cumulative GDD	Daily Rainfall	Station	Month	Date	Day	Daily GDD	Cumulative GDD	Daily Rainfall
Towns end	April	29	1	23.35	23.35	0	Townsend	June	1	34	14.75	466.8	0
Towns end	April	30	2	10.65	34	0	Townsend	June	2	35	17.55	484.35	0
Towns end	May	1	3	8.25	42.25	0	Townsend	June	3	36	21.05	505.4	0.19
Towns end	May	2	4	19.35	61.6	0	Townsend	June	4	37	24.95	530.35	0.02
Towns end	May	3	5	19.4	81	0	Townsend	June	5	38	25.55	555.9	0.01
Towns end	May	4	6	24.95	105.95	0	Townsend	June	6	39	26.45	582.35	0
Towns end	May	5	7	17.2	123.15	0.28	Townsend	June	7	40	28.7	611.05	0
Towns end	May	6	8	6.75	129.9	0	Townsend	June	8	41	28.8	639.85	0
Towns end	May	7	9	7.85	137.75	0.05	Townsend	June	9	42	27.85	667.7	0
Towns end	May	8	10	3.05	140.8	0.07	Townsend	June	10	43	25.5	693.2	0
Towns end	May	9	11	5.85	146.65	0	Townsend	June	11	44	15.25	708.45	0.58
Towns end	May	10	12	6.55	153.2	0	Townsend	June	12	45	19.15	727.6	0
Towns end	May	11	13	8.35	161.55	0	Townsend	June	13	46	19.05	746.65	0
Towns end	May	12	14	8.4	169.95	0	Townsend	June	14	47	24.75	771.4	1.13
Towns end	May	13	15	9.5	179.45	0	Townsend	June	15	48	21.2	792.6	0.32
Towns end	May	14	16	11.6	191.05	0	Townsend	June	16	49	17.2	809.8	0.01
Towns end	May	15	17	13.3	204.35	0	Townsend	June	17	50	15.85	825.65	0
Towns end	May	16	18	11.75	216.1	0	Townsend	June	18	51	17.7	843.35	0
Towns end	May	17	19	11.8	227.9	0	Townsend	June	19	52	26.55	869.9	0.33
Towns end	May	18	20	14.4	242.3	0	Townsend	June	20	53	25.15	895.05	0.01
Towns end	May	19	21	19.6	261.9	0	Townsend	June	21	54	27.75	922.8	0.9
Towns end	May	20	22	15.85	277.75	0	Townsend	June	22	55	16.55	939.35	0.19
Towns end	May	21	23	16.75	294.5	0	Townsend	June	23	56	12.7	952.05	0
Towns end	May	22	24	22.65	317.15	0	Townsend	June	24	57	14.05	966.1	0
Towns end	May	23	25	27.2	344.35	0	Townsend	June	25	58	15.65	981.75	0
Towns end	May	24	26	18.15	362.5	0.01	Townsend	June	26	59	25.95	1007.7	0.11
Towns end	May	25	27	16.55	379.05	0	Townsend	June	27	60	29.3	1037	0
Towns end	May	26	28	24.45	403.5	0.96	Townsend	June	28	61	29.6	1066.6	0
Towns end	May	27	29	22.75	426.25	0	Townsend	June	29	62	29.3	1095.9	0
Towns end	May	28	30	11.7	437.95	0.64	Townsend	June	30	63	29.9	1125.8	0
Towns end	May	29	31	2.1	440.05	1							
Towns end	May	30	32	1.15	441.2	0.47							
Towns end	May	31	33	10.85	452.05	0							

Table 2 Continued...

Station	Month	Date	Day	Daily GDD	Cumulative GDD	Daily Rainfall		Station	Month	Date	Day	Daily GDD	Cumulative GDD	Daily Rainfall
Townsend	July	1	64	26.55	1152.35	0.58		Townsend	August	1	95	19.35	1941.6	0.26
Townsend	July	2	65	21.95	1174.3	0.29		Townsend	August	2	96	17.7	1959.3	0.01
Townsend	July	3	66	17.1	1191.4	0.09		Townsend	August	3	97	18.1	1977.4	0
Townsend	July	4	67	19.95	1211.35	0		Townsend	August	4	98	18.9	1996.3	0
Townsend	July	5	68	23.5	1234.85	0		Townsend	August	5	99	20.2	2016.5	0
Townsend	July	6	69	28.75	1263.6	0		Townsend	August	6	100	24.7	2041.2	0
Townsend	July	7	70	29.7	1293.3	0		Townsend	August	7	101	23.65	2064.85	0.07
Townsend	July	8	71	28.3	1321.6	0.09		Townsend	August	8	102	24.6	2089.45	0.04
Townsend	July	9	72	28.55	1350.15	0.2		Townsend	August	9	103	25.1	2114.55	0.98
Townsend	July	10	73	24.6	1374.75	0		Townsend	August	10	104	29.4	2143.95	0.5
Townsend	July	11	74	25.8	1400.55	0		Townsend	August	11	105	29	2172.95	0.03
Townsend	July	12	75	29.95	1430.5	0		Townsend	August	12	106	28.85	2201.8	0
Townsend	July	13	76	29.4	1459.9	0		Townsend	August	13	107	29.35	2231.15	0.08
Townsend	July	14	77	30.45	1490.35	0		Townsend	August	14	108	29.05	2260.2	0
Townsend	July	15	78	28.05	1518.4	0		Townsend	August	15	109	27.1	2287.3	0.04
Townsend	July	16	79	30.5	1548.9	0		Townsend	August	16	110	26.4	2313.7	0
Townsend	July	17	80	29.7	1578.6	0.01		Townsend	August	17	111	27.85	2341.55	0.84
Townsend	July	18	81	22.95	1601.55	0.06		Townsend	August	18	112	30.2	2371.75	0.14
Townsend	July	19	82	26.05	1627.6	0		Townsend	August	19	113	30.5	2402.25	0.05
Townsend	July	20	83	25.75	1653.35	0		Townsend	August	20	114	26.5	2428.75	0.64
Townsend	July	21	84	26.75	1680.1	0.04		Townsend	August	21	115	25.4	2454.15	0
Townsend	July	22	85	20.6	1700.7	0		Townsend	August	22	116	24.75	2478.9	0.4
Townsend	July	23	86	20.3	1721	0		Townsend	August	23	117	28.9	2507.8	0.63
Townsend	July	24	87	21.55	1742.55	0		Townsend	August	24	118	27.7	2535.5	0.01
Townsend	July	25	88	28.75	1771.3	0		Townsend	August	25	119	26.35	2561.85	0
Townsend	July	26	89	27.15	1798.45	0.89		Townsend	August	26	120	29.6	2591.45	0
Townsend	July	27	90	25.75	1824.2	0		Townsend	August	27	121	28.95	2620.4	0.26
Townsend	July	28	91	27.05	1851.25	0		Townsend	August	28	122	24.95	2645.35	0
Townsend	July	29	92	25.85	1877.1	0		Townsend	August	29	123	23.75	2669.1	0
Townsend	July	30	93	25.45	1902.55	0		Townsend	August	30	124	27.5	2696.6	0.3
Townsend	July	31	94	19.7	1922.25	0		Townsend	August	31	125	26.5	2723.1	0

Table 2 continued...

Station	Month	Date	Day	Daily GDD	Cumulative GDD	Daily Rainfall
Townsend	September	1	126	25.75	2748.85	1.04
Townsend	September	2	127	16.9	2765.75	0
Townsend	September	3	128	13.75	2779.5	0
Townsend	September	4	129	15.4	2794.9	0
Townsend	September	5	130	21.3	2816.2	0.06
Townsend	September	6	131	22.75	2838.95	0.02
Townsend	September	7	132	20.55	2859.5	0
Townsend	September	8	133	26.35	2885.85	0
Townsend	September	9	134	18.1	2903.95	0.29
Townsend	September	10	135	15.45	2919.4	0
Townsend	September	11	136	15.55	2934.95	0
Townsend	September	12	137	23.95	2958.9	0
Townsend	September	13	138	27	2985.9	0
Townsend	September	14	139	26.3	3012.2	0
Townsend	September	15	140	28.95	3041.15	0
Townsend	September	16	141	25.25	3066.4	2.68
Townsend	September	17	142	23.35	3089.75	0.01
Townsend	September	18	143	25.05	3114.8	0
Townsend	September	19	144	18.8	3133.6	0
Townsend	September	20	145	16.3	3149.9	0
Townsend	September	21	146	19.5	3169.4	0

Table 2 Continued...

Station	Month	Date	Day	Daily GDD	Cumulative GDD	Daily Rainfall	Station	Month	Date	Day	Daily GDD	Cumulative GDD	Daily Rainfall
La urel	April	28	1	22.7	22.7	0	Laurel	June	1	35	14.1	510.7	0
La urel	April	29	2	24.45	47.15	0	Laurel	June	2	36	17.75	528.45	0.02
La urel	April	30	3	14.75	61.9	0.02	Laurel	June	3	37	22.35	550.8	0.29
La urel	May	1	4	8.05	69.95	0	Laurel	June	4	38	22.5	573.3	0.01
La urel	May	2	5	15.3	85.25	0	Laurel	June	5	39	24.9	598.2	0
La urel	May	3	6	21.05	106.3	0.2	Laurel	June	6	40	26	624.2	0
La urel	May	4	7	24.25	130.55	0.38	Laurel	June	7	41	28.5	652.7	0
La urel	May	5	8	19.15	149.7	0.17	Laurel	June	8	42	29.55	682.25	0
La urel	May	6	9	7.15	156.85	0	Laurel	June	9	43	27.55	709.8	0.74
La urel	May	7	10	8.05	164.9	0.64	Laurel	June	10	44	26.05	735.85	0.8
La urel	May	8	11	4.35	169.25	0.01	Laurel	June	11	45	16.8	752.65	0.21
La urel	May	9	12	9.8	179.05	0	Laurel	June	12	46	19.05	771.7	0.08
La urel	May	10	13	10.75	189.8	0	Laurel	June	13	47	20.6	792.3	0
La urel	May	11	14	9.1	198.9	0	Laurel	June	14	48	24.1	816.4	0
La urel	May	12	15	6.9	205.8	0	Laurel	June	15	49	21.55	837.95	0.23
La urel	May	13	16	9.75	215.55	0	Laurel	June	16	50	18.95	856.9	0
La urel	May	14	17	10.55	226.1	0	Laurel	June	17	51	15.8	872.7	0
La urel	May	15	18	12.5	238.6	0	Laurel	June	18	52	18.25	890.95	0
La urel	May	16	19	11.85	250.45	0	Laurel	June	19	53	28.4	919.35	0
La urel	May	17	20	11.55	262	0	Laurel	June	20	54	26.85	946.2	0
La urel	May	18	21	13.9	275.9	0	Laurel	June	21	55	28.15	974.35	0
La urel	May	19	22	17.75	293.65	0	Laurel	June	22	56	20.2	994.55	0.48
La urel	May	20	23	17.85	311.5	0	Laurel	June	23	57	12.8	1007.35	0
La urel	May	21	24	14.9	326.4	0	Laurel	June	24	58	12.1	1019.45	0
La urel	May	22	25	20.65	347.05	0	Laurel	June	25	59	16.25	1035.7	0
La urel	May	23	26	27.35	374.4	0	Laurel	June	26	60	26.35	1062.05	1
La urel	May	24	27	17.9	392.3	0.01	Laurel	June	27	61	28.7	1090.75	0
La urel	May	25	28	13.75	406.05	0.01	Laurel	June	28	62	28.85	1119.6	0
La urel	May	26	29	25.2	431.25	0	Laurel	June	29	63	28.2	1147.8	0
La urel	May	27	30	24.55	455.8	0.01	Laurel	June	30	64	29.85	1177.65	0
La urel	May	28	31	19.7	475.5	0.07							
La urel	May	29	32	8.55	484.05	0.7							
La urel	May	30	33	1.85	485.9	0.57							
La urel	May	31	34	10.7	496.6	0							

Table 2 Continued...

Station	Month	Date	Day	Daily GDD	Cumulative GDD	Daily Rainfall		Station	Month	Date	Day	Daily GDD	Cumulative GDD	Daily Rainfall
Laurel	July	1	65	28.95	1206.6	0.07		Laurel	August	1	96	23.3	2019.85	0.49
Laurel	July	2	66	21.3	1227.9	1.62		Laurel	August	2	97	20.95	2040.8	0.01
Laurel	July	3	67	18.4	1246.3	0.28		Laurel	August	3	98	18.55	2059.35	0
Laurel	July	4	68	21.25	1267.55	0.01		Laurel	August	4	99	17.75	2077.1	0.02
Laurel	July	5	69	24.4	1291.95	0		Laurel	August	5	100	22.3	2099.4	0
Laurel	July	6	70	27.85	1319.8	0		Laurel	August	6	101	23.8	2123.2	0
Laurel	July	7	71	30.55	1350.35	0		Laurel	August	7	102	20.7	2143.9	1.78
Laurel	July	8	72	29.6	1379.95	1.62		Laurel	August	8	103	23.3	2167.2	0.03
Laurel	July	9	73	29.05	1409	1.1		Laurel	August	9	104	25.5	2192.7	0
Laurel	July	10	74	24.9	1433.9	0		Laurel	August	10	105	28.35	2221.05	0
Laurel	July	11	75	26.15	1460.05	0		Laurel	August	11	106	29.1	2250.15	0
Laurel	July	12	76	30.4	1490.45	0		Laurel	August	12	107	29.05	2279.2	0
Laurel	July	13	77	31.35	1521.8	0		Laurel	August	13	108	29.6	2308.8	0.15
Laurel	July	14	78	29.7	1551.5	0.05		Laurel	August	14	109	29.05	2337.85	0.92
Laurel	July	15	79	27.65	1579.15	0.01		Laurel	August	15	110	25.6	2363.45	0.35
Laurel	July	16	80	30.55	1609.7	0		Laurel	August	16	111	25.6	2389.05	0.25
Laurel	July	17	81	29.2	1638.9	0.21		Laurel	August	17	112	27	2416.05	1.51
Laurel	July	18	82	26.2	1665.1	0.04		Laurel	August	18	113	29.7	2445.75	0.01
Laurel	July	19	83	24.9	1690	0		Laurel	August	19	114	31.25	2477	0
Laurel	July	20	84	25.75	1715.75	0		Laurel	August	20	115	26.35	2503.35	0.77
Laurel	July	21	85	26.8	1742.55	0		Laurel	August	21	116	25.7	2529.05	0.07
Laurel	July	22	86	21.9	1764.45	0		Laurel	August	22	117	25.1	2554.15	0.04
Laurel	July	23	87	21.25	1785.7	0		Laurel	August	23	118	27.75	2581.9	0
Laurel	July	24	88	21.6	1807.3	0		Laurel	August	24	119	28.4	2610.3	0
Laurel	July	25	89	26.3	1833.6	0.01		Laurel	August	25	120	26.8	2637.1	0
Laurel	July	26	90	29.4	1863	0		Laurel	August	26	121	28.15	2665.25	0.14
Laurel	July	27	91	28.95	1891.95	0		Laurel	August	27	122	29.55	2694.8	0.04
Laurel	July	28	92	28.25	1920.2	0		Laurel	August	28	123	29.1	2723.9	0.33
Laurel	July	29	93	27.05	1947.25	0.06		Laurel	August	29	124	26.65	2750.55	0
Laurel	July	30	94	26.65	1973.9	0		Laurel	August	30	125	27	2777.55	0.03
Laurel	July	31	95	22.65	1996.55	0		Laurel	August	31	126	28.05	2805.6	0

Table 2 Continued...

Station	Month	Date	Day	Daily GDD	Cumulative GDD	Daily Rainfall
Laurel	September	1	127	27.95	2805.6	1.15
Laurel	September	2	128	16.9	2822.5	0.01
Laurel	September	3	129	14.25	2836.75	0.01
Laurel	September	4	130	16.3	2853.05	0
Laurel	September	5	131	20.95	2874	0.07
Laurel	September	6	132	22.95	2896.95	0.08
Laurel	September	7	133	21.35	2918.3	0
Laurel	September	8	134	24.15	2942.45	0.05
Laurel	September	9	135	19.05	2961.5	2.21
Laurel	September	10	136	14.55	2976.05	0
Laurel	September	11	137	14.65	2990.7	0.01
Laurel	September	12	138	22.65	3013.35	0
Laurel	September	13	139	27	3040.35	0
Laurel	September	14	140	26.3	3066.65	0
Laurel	September	15	141	28.95	3095.6	0
Laurel	September	16	142	27.6	3123.2	0.91
Laurel	September	17	143	24.75	3147.95	0.03
Laurel	September	18	144	24.05	3172	0
Laurel	September	19	145	18.85	3190.85	0
Laurel	September	20	146	15.55	3206.4	0
Laurel	September	21	147	22.35	3228.75	0
Laurel	September	22	148	25.05	3253.8	0

Table 2 Continued...

Station	Month	Date	Day	Daily GDD	Cumulative GDD	Daily Rainfall		Station	Month	Date	Day	Daily GDD	Cumulative GDD	Daily Rainfall
Dover	May	7	1	7.65	7.65	0		Dover	June	1	26	16.05	348.2	0
Dover	May	8	2	3.75	11.4	0.13		Dover	June	2	27	18.6	366.8	0
Dover	May	9	3	6.9	18.3	0		Dover	June	3	28	22.35	389.15	0.24
Dover	May	10	4	10.3	28.6	0		Dover	June	4	29	25	414.15	0
Dover	May	11	5	8.4	37	0		Dover	June	5	30	25.75	439.9	0
Dover	May	12	6	8.25	45.25	0		Dover	June	6	31	26.95	466.85	0
Dover	May	13	7	9.65	54.9	0		Dover	June	7	32	29.25	496.1	0
Dover	May	14	8	12	66.9	0		Dover	June	8	33	29.9	526	0
Dover	May	15	9	12.55	79.45	0		Dover	June	9	34	27.3	553.3	0.67
Dover	May	16	10	11.8	91.25	0		Dover	June	10	35	26.6	579.9	0
Dover	May	17	11	12.05	103.3	0		Dover	June	11	36	16.1	596	0.37
Dover	May	18	12	14.5	117.8	0		Dover	June	12	37	19.7	615.7	0
Dover	May	19	13	20.05	137.85	0		Dover	June	13	38	19.55	635.25	0
Dover	May	20	14	14.7	152.55	0		Dover	June	14	39	25.55	660.8	0.01
Dover	May	21	15	15.5	168.05	0		Dover	June	15	40	22.35	683.15	0.72
Dover	May	22	16	22.3	190.35	0		Dover	June	16	41	18.65	701.8	0.01
Dover	May	23	17	27.5	217.85	0		Dover	June	17	42	17	718.8	0
Dover	May	24	18	19.7	237.55	0		Dover	June	18	43	20.4	739.2	0
Dover	May	25	19	16.5	254.05	0		Dover	June	19	44	27.95	767.15	0
Dover	May	26	20	24.95	279	0.7		Dover	June	20	45	26.85	794	0
Dover	May	27	21	23.3	302.3	0		Dover	June	21	46	28.1	822.1	0.2
Dover	May	28	22	13.9	316.2	0.36		Dover	June	22	47	17.65	839.75	0.63
Dover	May	29	23	3.8	320	1.69		Dover	June	23	48	13	852.75	0
Dover	May	30	24	1.05	321.05	0.32		Dover	June	24	49	13.25	866	0
Dover	May	31	25	11.1	332.15	0		Dover	June	25	50	16	882	0
								Dover	June	26	51	27.45	909.45	0.09
								Dover	June	27	52	29.25	938.7	0
								Dover	June	28	53	29.45	968.15	0
								Dover	June	29	54	29.5	997.65	0
								Dover	June	30	55	30.35	1028	0

Table 2 Continued...

Station	Month	Date	Day	Daily GDD	Cumulative GDD	Daily Rainfall		Station	Month	Date	Day	Daily GDD	Cumulative GDD	Daily Rainfall
Dover	July	1	56	28	1056	3.52		Dover	August	1	87	19.7	1872.95	0.6
Dover	July	2	57	22.05	1078.05	0.2		Dover	August	2	88	19.25	1892.2	0
Dover	July	3	58	18.7	1096.75	0.01		Dover	August	3	89	18.85	1911.05	0
Dover	July	4	59	21.5	1118.25	0		Dover	August	4	90	18.7	1929.75	0
Dover	July	5	60	24.05	1142.3	0		Dover	August	5	91	21.95	1951.7	0
Dover	July	6	61	28.65	1170.95	0		Dover	August	6	92	25.4	1977.1	0
Dover	July	7	62	30.6	1201.55	0		Dover	August	7	93	21.95	1999.05	0.45
Dover	July	8	63	29.05	1230.6	0.43		Dover	August	8	94	24	2023.05	0.35
Dover	July	9	64	28.85	1259.45	0.85		Dover	August	9	95	25.25	2048.3	0.92
Dover	July	10	65	26.2	1285.65	0		Dover	August	10	96	29	2077.3	0.1
Dover	July	11	66	26.9	1312.55	0.09		Dover	August	11	97	29.05	2106.35	0
Dover	July	12	67	30.95	1343.5	0		Dover	August	12	98	29.3	2135.65	0
Dover	July	13	68	30.6	1374.1	0		Dover	August	13	99	29.25	2164.9	0.1
Dover	July	14	69	31.35	1405.45	0		Dover	August	14	100	29.15	2194.05	0
Dover	July	15	70	27.85	1433.3	0		Dover	August	15	101	25.5	2219.55	0.19
Dover	July	16	71	31.05	1464.35	0		Dover	August	16	102	25.65	2245.2	0
Dover	July	17	72	29.6	1493.95	1.19		Dover	August	17	103	28.6	2273.8	0.14
Dover	July	18	73	25.3	1519.25	0		Dover	August	18	104	31	2304.8	0.04
Dover	July	19	74	26.9	1546.15	0		Dover	August	19	105	31.3	2336.1	0
Dover	July	20	75	26.75	1572.9	0		Dover	August	20	106	25.5	2361.6	1.85
Dover	July	21	76	26.6	1599.5	0.11		Dover	August	21	107	25.05	2386.65	0.11
Dover	July	22	77	22.15	1621.65	0		Dover	August	22	108	24.4	2411.05	1.95
Dover	July	23	78	21.3	1642.95	0		Dover	August	23	109	28.8	2439.85	0.37
Dover	July	24	79	22.9	1665.85	0		Dover	August	24	110	27.8	2467.65	0
Dover	July	25	80	28.8	1694.65	0		Dover	August	25	111	26.9	2494.55	0
Dover	July	26	81	28.05	1722.7	0		Dover	August	26	112	29	2523.55	0.16
Dover	July	27	82	26.1	1748.8	0		Dover	August	27	113	29.45	2553	0.82
Dover	July	28	83	28	1776.8	0		Dover	August	28	114	27.8	2580.8	0.01
Dover	July	29	84	27.3	1804.1	0.06		Dover	August	29	115	24.35	2605.15	0
Dover	July	30	85	27.2	1831.3	0		Dover	August	30	116	27.1	2632.25	0.05
Dover	July	31	86	21.95	1853.25	0		Dover	August	31	117	27	2659.25	0

Table 2 Continued...

Station	Month	Date	Day	Daily GDD	Cumulative GDD	Daily Rainfall	Station	Month	Date	Day	Daily GDD	Cumulative GDD	Daily Rainfall
Dover	September	1	118	25.85	2685.1	0.95	Dover	October	1	148	9.4	3264.7	0
Dover	September	2	119	17.85	2702.95	0	Dover	October	2	149	13.5	3278.2	0
Dover	September	3	120	14.85	2717.8	0	Dover	October	3	150	20.9	3299.1	0
Dover	September	4	121	16.45	2734.25	0	Dover	October	4	151	25.3	3324.4	0
Dover	September	5	122	20.85	2755.1	0							
Dover	September	6	123	23.2	2778.3	0.51							
Dover	September	7	124	21.4	2799.7	0							
Dover	September	8	125	26	2825.7	0							
Dover	September	9	126	18.35	2844.05	2.08							
Dover	September	10	127	15.9	2859.95	0							
Dover	September	11	128	15.4	2875.35	0							
Dover	September	12	129	23.2	2898.55	0							
Dover	September	13	130	27.5	2926.05	0							
Dover	September	14	131	26.95	2953	0							
Dover	September	15	132	28.65	2981.65	0							
Dover	September	16	133	26	3007.65	0.56							
Dover	September	17	134	23.15	3030.8	0							
Dover	September	18	135	25.15	3055.95	0							
Dover	September	19	136	19.3	3075.25	0							
Dover	September	20	137	15.4	3090.65	0							
Dover	September	21	138	18.55	3109.2	0							
Dover	September	22	139	27.35	3136.55	0							
Dover	September	23	140	20.85	3157.4	1.14							
Dover	September	24	141	13.4	3170.8	0							
Dover	September	25	142	12.75	3183.55	0							
Dover	September	26	143	13.85	3197.4	0							
Dover	September	27	144	15.95	3213.35	0							
Dover	September	28	145	21.5	3234.85	0							
Dover	September	29	146	9.75	3244.6	0							
Dover	September	30	147	10.7	3255.3	0							

Table 2 Continued...

Station	Month	Date	Day	Daily GDD	Cumulative GDD	Daily Rainfall		Station	Month	Date	Day	Daily GDD	Cumulative GDD	Daily Rainfall
Georgetown	April	27	1	16.1	16.1	0		Georgetown	June	1	36	15.5	514.2	0
Georgetown	April	28	2	17.2	33.3	0		Georgetown	June	2	37	18.15	532.35	0.02
Georgetown	April	29	3	17.35	50.65	0		Georgetown	June	3	38	22.3	554.65	0.45
Georgetown	April	30	4	13.2	63.85	0.09		Georgetown	June	4	39	23.05	577.7	0
Georgetown	May	1	5	7.8	71.65	0		Georgetown	June	5	40	25.45	603.15	0
Georgetown	May	2	6	16.35	88	0		Georgetown	June	6	41	27.1	630.25	0
Georgetown	May	3	7	22.25	110.25	0.13		Georgetown	June	7	42	28.3	658.55	0
Georgetown	May	4	8	24.75	135	0.4		Georgetown	June	8	43	30.25	688.8	0
Georgetown	May	5	9	18.75	153.75	0.03		Georgetown	June	9	44	27.15	715.95	2.41
Georgetown	May	6	10	7.5	161.25	0		Georgetown	June	10	45	26.25	742.2	0
Georgetown	May	7	11	8.2	169.45	0.07		Georgetown	June	11	46	15.9	758.1	0.05
Georgetown	May	8	12	3.95	173.4	0.05		Georgetown	June	12	47	18.15	776.25	0.06
Georgetown	May	9	13	8.6	182	0		Georgetown	June	13	48	19.15	795.4	0
Georgetown	May	10	14	10.85	192.85	0		Georgetown	June	14	49	23.85	819.25	0
Georgetown	May	11	15	9.15	202	0		Georgetown	June	15	50	23.15	842.4	0.2
Georgetown	May	12	16	7.2	209.2	0		Georgetown	June	16	51	20.55	862.95	0
Georgetown	May	13	17	9.7	218.9	0		Georgetown	June	17	52	17.55	880.5	0
Georgetown	May	14	18	11.25	230.15	0		Georgetown	June	18	53	20	900.5	0
Georgetown	May	15	19	12.35	242.5	0		Georgetown	June	19	54	27.9	928.4	0
Georgetown	May	16	20	11.8	254.3	0.1		Georgetown	June	20	55	27.35	955.75	0
Georgetown	May	17	21	11.7	266	0		Georgetown	June	21	56	28.95	984.7	0
Georgetown	May	18	22	14.2	280.2	0		Georgetown	June	22	57	20.15	1004.85	0.36
Georgetown	May	19	23	18.7	298.9	0		Georgetown	June	23	58	13.1	1017.95	0
Georgetown	May	20	24	15.5	314.4	0		Georgetown	June	24	59	12	1029.95	0
Georgetown	May	21	25	14.35	328.75	0		Georgetown	June	25	60	16.5	1046.45	0
Georgetown	May	22	26	20.8	349.55	0		Georgetown	June	26	61	25.55	1072	1.27
Georgetown	May	23	27	27.15	376.7	0		Georgetown	June	27	62	29	1101	0
Georgetown	May	24	28	18.1	394.8	0		Georgetown	June	28	63	28.85	1129.85	0
Georgetown	May	25	29	14.25	409.05	0.03		Georgetown	June	29	64	28.65	1158.5	0
Georgetown	May	26	30	25.2	434.25	0.04		Georgetown	June	30	65	30.2	1188.7	0
Georgetown	May	27	31	25.95	460.2	0								
Georgetown	May	28	32	18.05	478.25	0.08								
Georgetown	May	29	33	7.95	486.2	0.81								
Georgetown	May	30	34	1.95	488.15	0.83								
Georgetown	May	31	35	10.55	498.7	0								

Table 2 Continued...

Station	Month	Date	Day	Daily GDD	Cumulative GDD	Daily Rainfall	Station	Month	Date	Day	Daily GDD	Cumulative GDD	Daily Rainfall
Georgetown	July	1	66	28.8	1217.5	0.15	Georgetown	August	1	97	22.55	2032.5	0.13
Georgetown	July	2	67	21.1	1238.6	1.11	Georgetown	August	2	98	20.9	2053.4	0
Georgetown	July	3	68	19.2	1257.8	0.11	Georgetown	August	3	99	18.75	2072.15	0
Georgetown	July	4	69	21.9	1279.7	0.01	Georgetown	August	4	100	17.65	2089.8	0
Georgetown	July	5	70	24.35	1304.05	0	Georgetown	August	5	101	22.35	2112.15	0
Georgetown	July	6	71	27.7	1331.75	0	Georgetown	August	6	102	23.6	2135.75	0
Georgetown	July	7	72	30.55	1362.3	0	Georgetown	August	7	103	20.7	2156.45	1.41
Georgetown	July	8	73	29.45	1391.75	1.07	Georgetown	August	8	104	23.45	2179.9	0.14
Georgetown	July	9	74	28.55	1420.3	1.91	Georgetown	August	9	105	25.25	2205.15	0
Georgetown	July	10	75	25.95	1446.25	0	Georgetown	August	10	106	28.25	2233.4	0
Georgetown	July	11	76	25.95	1472.2	0	Georgetown	August	11	107	29.7	2263.1	0
Georgetown	July	12	77	29.65	1501.85	0	Georgetown	August	12	108	29.3	2292.4	0
Georgetown	July	13	78	30.85	1532.7	0	Georgetown	August	13	109	29.3	2321.7	0.99
Georgetown	July	14	79	29.9	1562.6	0.04	Georgetown	August	14	110	28.95	2350.65	0
Georgetown	July	15	80	27.85	1590.45	0.01	Georgetown	August	15	111	25.2	2375.85	0.54
Georgetown	July	16	81	29.9	1620.35	0	Georgetown	August	16	112	25.5	2401.35	0.23
Georgetown	July	17	82	28.9	1649.25	0.37	Georgetown	August	17	113	27.1	2428.45	0.77
Georgetown	July	18	83	26.35	1675.6	0.05	Georgetown	August	18	114	30.35	2458.8	0
Georgetown	July	19	84	25.2	1700.8	0	Georgetown	August	19	115	31.3	2490.1	0
Georgetown	July	20	85	25.65	1726.45	0	Georgetown	August	20	116	25.4	2515.5	1.22
Georgetown	July	21	86	27.9	1754.35	0	Georgetown	August	21	117	26.85	2542.35	0.3
Georgetown	July	22	87	22	1776.35	0	Georgetown	August	22	118	25.55	2567.9	0.08
Georgetown	July	23	88	21.9	1798.25	0	Georgetown	August	23	119	27.75	2595.65	0.01
Georgetown	July	24	89	21.3	1819.55	0	Georgetown	August	24	120	29	2624.65	0
Georgetown	July	25	90	26.85	1846.4	0	Georgetown	August	25	121	27.1	2651.75	0
Georgetown	July	26	91	30.6	1877	0	Georgetown	August	26	122	28.8	2680.55	0.1
Georgetown	July	27	92	29.3	1906.3	0	Georgetown	August	27	123	29.9	2710.45	0.03
Georgetown	July	28	93	28.05	1934.35	0.08	Georgetown	August	28	124	29.05	2739.5	0.22
Georgetown	July	29	94	26.8	1961.15	0.05	Georgetown	August	29	125	25.95	2765.45	0
Georgetown	July	30	95	26.65	1987.8	0	Georgetown	August	30	126	27.25	2792.7	0.02
Georgetown	July	31	96	22.15	2009.95	0	Georgetown	August	31	127	28.5	2821.2	0.01

Table 2 Continued...

Station	Month	Date	Day	Daily GDD	Cumulative GDD	Daily Rainfall
Georgetown	September	1	128	28.2	2849.4	1.25
Georgetown	September	2	129	19.2	2868.6	0.02
Georgetown	September	3	130	14.95	2883.55	0
Georgetown	September	4	131	16.4	2899.95	0
Georgetown	September	5	132	22.65	2922.6	0.02
Georgetown	September	6	133	24.25	2946.85	0.07
Georgetown	September	7	134	22.35	2969.2	0
Georgetown	September	8	135	25.85	2995.05	0.01
Georgetown	September	9	136	19.05	3014.1	1.78
Georgetown	September	10	137	15.5	3029.6	0
Georgetown	September	11	138	16.3	3045.9	0
Georgetown	September	12	139	23.25	3069.15	0
Georgetown	September	13	140	27.15	3096.3	0
Georgetown	September	14	141	26.3	3122.6	0
Georgetown	September	15	142	28.75	3151.35	0
Georgetown	September	16	143	27.5	3178.85	0.02
Georgetown	September	17	144	24.1	3202.95	0.01
Georgetown	September	18	145	24.75	3227.7	0
Georgetown	September	19	146	18.6	3246.3	0
Georgetown	September	20	147	15.8	3262.1	0
Georgetown	September	21	148	22.5	3284.6	0
Georgetown	September	22	149	26.25	3310.85	0
Georgetown	September	23	150	22.05	3332.9	1.24
Georgetown	September	24	151	13.8	3346.7	0
Georgetown	September	25	152	13.2	3359.9	0
Georgetown	September	26	153	13.7	3373.6	0
Georgetown	September	27	154	16.2	3389.8	0
Georgetown	September	28	155	23.15	3412.95	0
Georgetown	September	29	156	9.85	3422.8	0
Georgetown	September	30	157	11.75	3434.55	0

**Table 3. Dryland Corn Hybrid Performance Summary
Emerson Farms (New Castle County) Middletown, Delaware**

Planted 4/29/2021 & Harvested September 21. Early Hybrids										Performance Ranking for				Pooled sites			
Brand	Hybrid	Yield Bu/A ¹	% Moisture	Yield/Moisture	Test Weight	Final Pop	% Stalk Lodging	% Relative Yield to Check Avg.	Middletown Dryland	Laurel Irrigated	Georgetown Irrigated	Camden Wyoming Irrigated	Irrigated Yield Avg. Bu/A	Rank	Pooled Yield Ave. Bu/A	Two Year Yield Ave. Bu/A	
Mid-Atlantic Seeds	MA8042	145.7	14.1	9.4	57.8	25250.0	14.2	127.6	1	16	1	17	252.0	16	225.4		
MorCorn	MC3952	135.1	14.3	9.5	57.0	23000.0	0.0	118.3	2	14	5	10	257.3	13	226.7	215.1	
Mid-Atlantic Seeds	MA8091	134.6	15.2	8.9	57.5	22500.0	1.2	117.9	3	6	9	5	264.3	5	231.9	220.5	
AgVenture	AV9610AM	128.8	15.0	8.6	58.5	23500.0	0.0	112.8	4	2	3	3	275.3	2	238.7		
NK	NK1082-5222A-EZ1	119.9	15.3	7.9	56.1	23750.0	2.1	105.0	5	7	12	13	259.4	10	224.5	208.1	
AgVenture	AV5107AM	119.2	14.5	8.2	57.5	23375.0	4.9	104.4	6	3	6	2	268.6	3	231.4		
DeKalb	DKC62-20RIB (Check)	118.9	14.3	8.3	57.8	23000.0	0.0	104.1	7	9	15	12	258.6	11	223.7		
AgVenture	AV7408AM	116.4	14.1	8.3	57.2	23625.0	1.6	101.9	8	10	10	6	262.2	6	225.8	217.1	
Mid-Atlantic Seeds	MA8039	115.4	13.8	8.4	57.6	22750.0	0.0	101.0	9	17	14	15	245.2	17	212.8	201.7	
Seed Consultants	SC1071AM	114.0	14.3	8.0	57.1	23125.0	0.5	99.8	10	1	13	1	275.7	1	235.3	221.2	
Seed Consultants	SC1087AM	112.5	14.1	8.0	57.1	23250.0	4.2	98.5	11	8	18	7	258.4	12	221.9	214.9	
AgVenture	AV4104AM	111.7	14.4	7.8	57.9	23125.0	1.1	97.8	12	18	11	18	237.7	18	206.2		
Mid-Atlantic Seeds	MA7103HD	111.4	15.1	7.4	53.9	23250.0	1.1	97.5	13	15	8	16	253.5	15	218.0		
DeKalb	DKC62-53RIB (Check)	109.4	14.2	7.7	57.8	23625.0	0.0	95.8	14	12	4	9	259.9	9	222.2		
LG Seeds	LG5590VT2RIB	106.5	14.7	7.3	57.6	24125.0	0.5	93.3	15	5	2	8	267.1	4	227.0		
Mid-Atlantic Seeds	MA8064	102.5	14.1	7.3	58.3	23375.0	0.5	89.7	16	13	17	11	254.8	14	216.7		
Seed Consultants	SC1092AM	96.9	15.2	6.4	58.2	20375.0	0.0	84.9	17	4	7	14	261.4	7	220.3		
Mid-Atlantic Seeds	MA8106	88.7	14.4	6.1	56.9	22875.0	6.5	77.7	18	11	16	4	260.1	8	217.2	209.3	
	Check Avg.	114.2	14.3	8.0	57.8	23313.0	0.0										
	Test Avg.	116.0	14.5	8.0	57.3	23215.0	2.1										
	LSD (0.05)	15.9	0.7	1.2	1.0	1573.0	5.4										
	% C.V.	8.7	2.6	9.7	1.2	4.4	144.4										
	Check Avg. + LSD (0.05)	130.1															

¹The bold text and darker shading indicate that the yield of the hybrids is not statistically different from the top yielding hybrid
NS = not statistically significant at a 5% probability level

**Table 4. Dryland Corn Hybrid Performance Summary
Emerson Farms (New Castle County) Middletown, Delaware**

Planted 4/29/2021 & Harvested September 11. Early-Medium Hybrids										Performance Ranking for				Pooled sites		
Brand	Hybrid	Yield Bu/A ¹	% Moisture	Yield/Moisture	Test Weight	Final Pop	% Stalk Lodging	% Relative Yield to Check Avg.	Middletown Dryland	Laurel Irrigated	Georgetown Irrigated	Camden Wyoming Irrigated	Irrigated Yield Avg. Bu/A	Rank	Pooled Yield Ave. Bu/A	Two Year Yield Ave. Bu/A
DeKalb	DKC65-95RIB (Check)	132.4	15.7	8.4	58.9	23750.0	0.0	103.9	1	19	9	17	261.3	18	229.0	
Local Seed	LC1398 VT2PRIB	128.4	15.6	8.2	57.2	23250.0	0.0	100.8	2	2	10	19	273.3	7	237.1	227.9
LG Seeds	LG64C30TRC	128.0	15.9	8.1	58.4	22750.0	1.7	100.5	3	4	1	13	279.6	1	241.7	
MorCorn	MC4255	125.1	15.8	7.9	56.4	24250.0	0.0	98.2	4	8	4	12	273.2	8	236.2	219.1
Dyna-Gro	D54VC14	124.6	15.9	7.8	58.9	22625.0	0.0	97.8	5	17	15	20	258.5	19	225.0	
LG Seeds	LG5643VT2PRO	124.0	16.0	7.7	57.7	23875.0	2.2	97.4	6	5	19	1	277.4	4	239.0	
Mid-Atlantic Seeds	MA8132	122.5	16.3	7.6	58.3	20875.0	0.0	96.1	7	21	21	21	247.7	21	216.4	
DeKalb	DKC64-65RIB (Check)	122.3	15.2	8.1	58.4	24125.0	0.0	96.0	8	18	7	15	264.0	17	228.5	
AgVenture	AV4313AM	121.0	16.8	7.2	58.0	22500.0	8.7	95.0	9	3	8	8	277.7	2	238.6	219.9
MorCorn	MC4161	120.8	14.9	8.1	57.1	24000.0	5.7	94.8	10	14	13	11	264.1	16	228.3	
Local Seed	LC1497 DGV2PRIB	120.6	14.4	8.4	56.4	23000.0	4.6	94.6	11	6	3	5	277.7	3	238.4	222.7
Mid-Atlantic Seeds	MA8128	120.1	15.1	8.0	57.4	23000.0	0.5	94.3	12	13	16	9	266.0	14	229.5	210.7
Seed Consultants	SC1122AM	116.0	16.1	7.2	58.2	22125.0	1.2	91.1	13	10	20	2	271.0	10	232.3	
Mid-Atlantic Seeds	MA8141	114.2	16.8	6.8	57.6	23750.0	4.7	89.6	14	15	11	10	265.1	15	227.4	223.6
Local Seed	LC1307 TCRIB	111.1	15.5	7.2	56.5	22125.0	1.1	87.2	15	9	12	3	273.0	9	232.5	
MorCorn	MC4311	110.7	15.3	7.2	56.6	22000.0	0.0	86.9	16	7	2	7	276.8	5	235.2	
Seed Consultants	SC1122Q	110.2	16.6	6.6	57.6	22500.0	3.1	86.5	17	11	18	6	268.4	13	228.8	
Local Seed	LC1407 VT2PRIB	110.0	17.0	6.5	58.7	21000.0	13.6	86.3	18	16	5	4	269.3	11	229.5	
Mid-Atlantic Seeds	MA8110	105.7	15.3	6.9	56.2	23500.0	3.7	82.9	19	1	14	14	274.5	6	232.3	
MorCorn	MC4319	104.6	16.1	6.6	58.1	23000.0	0.0	82.1	20	12	6	16	268.6	12	227.6	214.5
Seed Consultants	SC1141AM	81.1	17.9	4.6	56.7	22625.0	0.0	63.7	21	20	17	18	258.0	20	213.8	203.5
	Check Avg.	127.4	15.5	8.3	58.7	23938.0	0.0									
	Test Avg.	116.8	15.9	7.4	57.6	22887.0	2.4									
	LSD (0.05)	21.8	1.0	1.4	1.1	1983.0	NS									
	% C.V.	11.9	3.9	11.7	1.2	5.7	135.4									
	Check Avg. + LSD (0.05)	149.2														

¹The bold text and darker shading indicate that the yield of the hybrids is not statistically different from the top yielding hybrid
NS = not statistically significant at a 5% probability level

**Table 5. Dryland Corn Hybrid Performance Summary
Emerson Farms (New Castle County) Middletown, Delaware**

Planted 4/29/2021 & Harvested September 21, Medium Hybrids										Performance Ranking for				Pooled sites		Two Year Yield Ave. Bu/A
Brand	Hybrid	Yield Bu/A ¹	% Moisture	Yield/ Moisture	Test Weight	Final Pop	% Stalk Lodging	% Relative Yield to Check Avg.	Middletown Dryland	Laurel Irrigated	Georgetown Irrigated	Camden Wyoming Irrigated	Irrigated Yield Avg. Bu/A	Rank	Pooled Yield Ave. Bu/A	
MorCorn	MC4670	142.2	17.0	8.3	58.1	23000.0	0.0	103.7	1	10	13	12	257.7	13	228.9	221.7
DeKalb	DKC70-27RIB (Check)	140.8	20.4	6.9	56.2	22750.0	0.0	102.7	2	1	1	1	283.9	1	248.1	
LG Seeds	LG66C44VT2PRO	139.7	18.7	7.5	57.3	23000.0	1.0	101.9	3	8	6	3	268.2	6	236.0	
MorCorn	MC4725	138.8	19.5	7.1	56.9	21875.0	1.0	101.2	4	5	12	2	269.6	4	236.9	228.8
Dyna-Gro	D58VC65 (Check)	133.4	19.6	6.8	57.1	22375.0	0.0	97.3	5	9	7	10	263.5	8	231.0	
Dyna-Gro	D55VC80	127.9	18.6	6.9	56.9	24000.0	1.0	93.3	6	11	10	9	260.3	11	227.2	
Mid-Atlantic Seeds	MA5155	119.5	18.8	6.4	56.5	23750.0	10.2	87.1	7	4	9	11	266.6	7	229.8	212.4
NK	NK1667-3110	112.8	19.2	5.9	56.1	22750.0	2.6	82.3	8	12	14	8	254.6	14	219.1	
Mid-Atlantic Seeds	MA8158	111.8	19.6	5.7	57.6	22000.0	2.4	81.6	9	7	4	14	260.4	10	223.2	216.0
AgVenture	AV3917AM	110.0	18.2	6.0	57.4	22625.0	3.8	80.2	10	2	11	4	272.0	3	231.5	
NK	NK1748-3110	107.2	18.9	5.7	55.8	23375.0	1.1	78.2	11	3	2	13	272.7	2	231.3	
Seed Consultants	SC1158AM	105.5	17.7	6.0	55.4	20625.0	0.0	77.0	12	14	8	7	258.1	12	219.9	218.5
Seed Consultants	SC1188AM	103.9	19.7	5.3	56.9	23625.0	1.1	75.7	13	6	5	5	269.2	5	227.9	215.2
AgVenture	AV3715AM	100.6	17.6	5.7	55.9	23375.0	1.1	73.4	14	13	3	6	261.2	9	221.0	
	Check Avg.	137.1	20.0	6.9	56.7	22563.0	0.0									
	Test Avg.	121.0	18.8	6.4	56.7	22795.0	1.8									
	LSD (0.05)	20.2	1.7	1.0	1.4	NS	NS									
	% C.V.	9.9	5.8	8.1	1.6	6.2	150.9									
	Check Avg. + LSD (0.05)	157.3														

¹The bold text and darker shading indicate that the yield of the hybrids is not statistically different from the top yielding hybrid
NS = not statistically significant at a 5% probability level

**Table 6. Irrigated Corn Hybrid Performance Summary
Thomas Family Farms (Kent County) Camden Wyoming, Delaware**

Planted 5/7/2021 & Harvested October 4, Early Hybrids																
Brand	Hybrid	Yield Bu/A ¹	% Moisture	Yield/Moisture	Test Weight	Final Pop	% Stalk Lodging	% Relative Yield to Check Avg.	Performance Ranking for				Pooled sites		Two Year Yield Ave. Bu/A	
									Camden Wyoming Irrigated	Georgetown Irrigated	Laurel Irrigated	Middletown Dryland	Irrigated Yield Avg. Bu/A	Rank		Pooled Yield Ave. Bu/A
Seed Consultants	SC1071AM	278.6	16.3	17.1	58.9	27875.0	0.0	108.2	1	13	1	10	275.7	1	235.3	221.2
AgVenture	AV5107AM	273.8	16.6	16.6	59.2	27875.0	0.9	106.3	2	6	3	6	268.8	3	231.4	
AgVenture	AV9610AM	271.4	17.4	15.7	58.9	28625.0	0.9	105.4	3	3	2	4	275.3	2	238.7	
Mid-Atlantic Seeds	MA8106	268.3	16.4	16.4	58.6	28875.0	0.9	104.1	4	16	11	18	260.1	8	217.2	209.3
Mid-Atlantic Seeds	MA8091	266.1	17.9	14.9	58.4	27750.0	0.5	103.3	5	9	6	3	264.3	5	231.9	220.5
AgVenture	AV7408AM	266.1	15.9	16.8	59.4	27750.0	0.0	103.3	6	10	10	8	262.2	6	225.8	217.1
Seed Consultants	SC1087AM	264.6	15.9	16.6	59.5	28625.0	0.0	102.7	7	18	8	11	258.4	12	221.9	214.9
LG Seeds	LG5590VT2RIB	262.5	16.9	15.6	58.4	28625.0	0.9	101.9	8	2	5	15	267.1	4	227.0	
Dekalb	DKC62-53RIB (Check)	258.9	17.4	14.9	58.4	28750.0	0.0	100.5	9	4	12	14	259.9	9	222.2	
MorCorn	MC3952	258.1	15.5	16.8	60.3	27625.0	0.5	100.2	10	5	14	2	257.3	13	226.7	215.1
Mid-Atlantic Seeds	MA8064	257.7	15.2	17.1	60.9	28750.0	1.7	100.0	11	17	13	16	254.8	14	216.7	
Dekalb	DKC62-20RIB (Check)	256.3	16.5	15.6	59.3	28250.0	0.5	99.5	12	15	9	7	258.6	11	223.7	
NK	NK1082-5222A-EZ1	253.3	17.1	14.9	57.7	28500.0	0.5	98.3	13	12	7	5	259.4	10	224.5	208.1
Seed Consultants	SC1092AM	252.8	17.4	14.5	58.5	25875.0	0.0	98.1	14	7	4	17	261.4	7	220.3	
Mid-Atlantic Seeds	MA8039	250.0	14.2	17.7	60.1	27500.0	3.1	97.1	15	14	17	9	245.2	17	212.8	201.7
Mid-Atlantic Seeds	MA7103HD	249.2	18.6	13.5	54.7	27875.0	0.9	96.7	16	8	15	13	253.5	15	218.0	
Mid-Atlantic Seeds	MA8042	238.0	15.2	15.7	60.1	29000.0	4.6	92.4	17	1	16	1	252.0	16	225.4	
AgVenture	AV4104AM	231.3	14.9	15.5	59.3	27625.0	0.5	89.8	18	11	18	12	237.7	18	206.2	
	Check Avg.	257.6	17.0	15.3	58.9	28500.0	0.3									
	Test Avg.	258.7	16.4	15.9	58.9	28097.0	0.9									
	LSD (0.05)	16.1	0.7	1.4	1.3	1076.0	NS									
	% C.V.	4.0	2.9	5.9	1.4	2.5	149.6									
	Check Avg. + LSD (0.05)	273.7														

¹The bold text and darker shading indicate that the yield of the hybrids is not statistically different from the top yielding hybrid
NS = not statistically significant at a 5% probability level

**Table 7. Irrigated Corn Hybrid Performance Summary
Thomas Family Farms (Kent County) Camden Wyoming, Delaware**

Planted 5/7/2021 & Harvested October 4, Early-Medium Hybrids															
Brand	Hybrid	Yield Bu/A ¹	% Moisture	Yield/Moisture	Test Weight	Final Pop	% Stalk Lodging	% Relative Yield to Check Avg.	Performance Ranking for				Pooled sites		Two Year Yield Ave. Bu/A
									Camden Wyoming Irrigated	Georgetown Irrigated	Laurel Irrigated	Middletown Dryland	Irrigated Yield Avg. Bu/A	Rank	
LG Seeds	LG5643VT2PRO	282.7	17.7	16.0	58.1	29000.0	0.0	108.2	1	19	5	6	277.4	4	239.0
Seed Consultants	SC1112AM	279.1	17.8	15.7	58.9	28250.0	0.5	106.8	2	20	10	13	271.0	10	232.3
Local Seed	LC1307 TCRIB	276.7	18.4	15.1	58.8	28125.0	0.0	105.9	3	12	9	15	273.0	9	232.5
Local Seed	LC1407 VT2PRIB	274.3	18.2	15.1	58.5	28625.0	0.0	105.0	4	5	16	18	269.3	11	229.5
Local Seed	LC1497 DGVT2PRIB	273.1	17.7	15.5	58.9	28000.0	0.0	104.5	5	3	6	11	277.7	3	238.4
Seed Consultants	SC1122Q	272.8	18.4	14.9	58.3	28500.0	0.4	104.5	6	18	11	17	268.4	13	228.8
MorCorn	MC4311	270.3	18.0	15.0	58.7	28500.0	0.0	103.5	7	2	7	16	276.8	5	235.2
AgVenture	AV4313AM	270.3	18.7	14.5	57.7	28250.0	0.0	103.5	8	8	3	9	277.7	2	238.6
Mid-Atlantic Seeds	MA8128	268.7	17.7	15.2	59.1	28125.0	0.4	102.9	9	16	13	12	266.0	14	229.5
Mid-Atlantic Seeds	MA8141	267.1	19.0	14.1	58.4	28250.0	1.3	102.2	10	11	15	14	265.1	15	227.4
MorCorn	MC4161	267.0	17.6	15.2	59.0	28000.0	0.4	102.2	11	13	14	10	264.1	16	228.3
MorCorn	MC4255	266.6	18.4	14.5	58.4	27750.0	0.0	102.1	12	4	8	4	273.2	8	236.2
LG Seeds	LG64C30TRC	264.9	19.0	14.0	58.5	27750.0	0.0	101.4	13	1	4	3	279.6	1	241.7
Mid-Atlantic Seeds	MA8110	263.2	18.7	14.1	58.4	29125.0	0.0	100.8	14	14	1	19	274.5	6	232.3
DeKalb	DKC64-65RIB (Check)	262.2	18.6	14.1	58.1	28500.0	0.0	100.4	15	7	18	8	264.0	17	228.5
MorCorn	MC4319	261.0	18.8	13.9	59.5	28375.0	1.8	99.9	16	6	12	20	268.6	12	227.6
DeKalb	DKC65-95RIB (Check)	260.1	18.5	14.1	60.1	28375.0	0.0	99.6	17	9	19	1	261.3	18	229.0
Seed Consultants	SC1141AM	259.3	17.6	14.8	60.0	28375.0	0.0	99.3	18	17	20	21	258.0	20	213.8
Local Seed	LC1398 VT2PRIB	258.7	17.9	14.4	58.8	28375.0	0.0	99.0	19	10	2	2	273.3	7	237.1
Dyna-Gro	D54VC14	253.5	18.0	14.1	60.0	28625.0	0.0	97.0	20	15	17	5	258.5	19	225.0
Mid-Atlantic Seeds	MA8132	240.3	19.0	12.6	59.0	25625.0	0.0	92.0	21	21	21	7	247.7	21	216.4
	Check Avg.	261.2	18.6	14.1	59.1	28438.0	0.0								
	Test Avg.	266.3	18.3	14.6	58.8	28214.0	0.2								
	LSD (0.05)	12.8	0.6	0.8	1.0	1169.0	NS								
	% C.V.	3.2	2.0	3.8	1.1	2.4	188.2								
	Check Avg. + LSD (0.05)	274.0													

¹The bold text and darker shading indicate that the yield of the hybrids is not statistically different from the top yielding hybrid
NS = not statistically significant at a 5% probability level

**Table 8. Irrigated Corn Hybrid Performance Summary
Thomas Family Farms (Kent County) Camden Wyoming, Delaware**

Planted 5/7/2021 & Harvested October 4, Medium Hybrids															
Brand	Hybrid	Yield Bu/A ¹	% Moisture	Yield/Moisture	Test Weight	Final Pop	% Stalk Lodging	% Relative Yield to Check Avg.	Performance Ranking for				Pooled sites		Two Year Yield Ave. Bu/A
									Camden Wyoming Irrigated	Georgetown Irrigated	Laurel Irrigated	Middletown Dryland	Irrigated Yield Avg. Bu/A	Rank	
DeKalb	DKC70-27RIB (Check)	276.3	20.6	13.4	57.8	28000.0	0.0	102.9	1	1	1	2	283.9	1	248.1
MorCorn	MC4725	274.7	19.4	14.2	59.0	28625.0	0.0	102.3	2	12	5	4	269.6	4	236.9
LG Seeds	LG66C44VT2PRO	272.9	18.5	14.8	59.0	29375.0	0.4	101.6	3	6	8	3	268.2	6	236.0
AgVenture	AV3917AM	269.8	20.0	13.5	58.4	28375.0	0.0	100.5	4	11	2	10	272.0	3	231.5
Seed Consultants	SC1188AM	267.2	19.8	13.5	59.2	29250.0	0.4	99.5	5	5	6	13	269.2	5	227.9
AgVenture	AV3715AM	264.3	19.5	13.6	57.6	27875.0	0.0	98.4	6	3	13	14	261.2	9	221.0
Seed Consultants	SC1158AM	263.6	19.0	13.9	58.5	27250.0	0.0	98.2	7	8	14	12	258.1	12	219.9
NK	NK1667-3110	262.1	19.7	13.3	57.4	28625.0	0.0	97.6	8	14	12	8	254.6	14	219.1
Dyna-Gro	D55VC80	261.2	18.5	14.1	59.2	29500.0	0.9	97.3	9	10	11	6	260.3	11	227.2
Dyna-Gro	D58VC65 (Check)	260.6	18.5	14.1	60.0	29000.0	0.0	97.1	10	7	9	5	263.5	8	231.0
Mid-Atlantic Seeds	MA5155	259.1	20.2	12.8	58.9	27875.0	0.0	96.5	11	9	4	7	266.6	7	229.8
MorCorn	MC4670	256.1	18.4	14.0	60.6	28500.0	2.6	95.4	12	13	10	1	257.7	13	228.9
NK	NK1748-3110	255.3	19.9	12.8	57.8	28000.0	0.5	95.1	13	2	3	11	272.7	2	231.3
Mid-Atlantic Seeds	MA8158	243.1	17.8	13.7	61.8	27375.0	2.8	90.5	14	4	7	9	260.4	10	223.2
	Check Avg.	268.5	19.6	13.8	58.9	28500.0	0.0								
	Test Avg.	263.3	19.3	13.7	58.9	28402.0	0.5								
	LSD (0.05)	15.7	0.6	1.0	1.1	1118.7	1.6								
	% C.V.	3.8	2.2	5.1	1.2	2.5	151.5								
	Check Avg. + LSD (0.05)	284.2													

¹The bold text and darker shading indicate that the yield of the hybrids is not statistically different from the top yielding hybrid
NS = not statistically significant at a 5% probability level

**Table 9. Irrigated Corn Hybrid Performance Summary
Plum Creek Farms, LLC (Sussex County) Laurel, Delaware**

Planted 4/28/2021 & Harvested September 22, Early Hybrids																
Brand	Hybrid	Yield Bu/A ¹	% Moisture	Yield/Moisture	Test Weight	Final Pop	% Stalk Lodging	% Relative Yield to Check Avg.	Performance Ranking for				Pooled sites		Two Year Yield Ave. Bu/A	
									Laurel Irrigated	Georgetown Irrigated	Camden Wyoming Irrigated	Middletown Dryland	Irrigated Yield Avg. Bu/A	Rank		Pooled Yield Ave. Bu/A
Seed Consultants	SC1071AM	308.9	17.6	17.6	57.6	30250.0	0.8	110.7	1	13	1	10	275.7	1	235.3	221.2
AgVenture	AV9610AM	306.7	17.8	17.4	57.3	31875.0	0.0	109.9	2	3	3	4	275.3	2	238.7	
AgVenture	AV5107AM	289.1	17.7	16.4	57.0	32000.0	0.0	103.6	3	6	2	6	268.8	3	231.4	
Seed Consultants	SC1092AM	288.0	18.2	15.9	56.5	29750.0	0.0	103.2	4	7	14	17	261.4	7	220.3	
LG Seeds	LG5590VT2RIB	287.7	18.7	15.4	55.5	31750.0	0.0	103.1	5	2	8	15	267.1	4	227.0	
Mid-Atlantic Seeds	MA8091	284.9	18.3	15.6	56.5	30875.0	0.0	102.1	6	9	5	3	264.3	5	231.9	220.5
NK	NK1082-5222A-EZ1	283.8	18.8	15.1	55.1	30000.0	0.0	101.7	7	12	13	5	259.4	10	224.5	208.1
Seed Consultants	SC1087AM	283.3	17.2	16.5	57.7	32250.0	0.0	101.5	8	18	7	11	258.4	12	221.9	214.9
DeKalb	DKC62-20RIB (Check)	282.2	16.7	16.9	58.2	30875.0	0.0	101.1	9	15	12	7	258.6	11	223.7	
AgVenture	AV7408AM	279.3	17.2	16.3	58.2	32125.0	0.0	100.1	10	10	6	8	262.2	6	225.8	217.1
Mid-Atlantic Seeds	MA8106	278.9	17.9	15.6	56.3	32500.0	0.0	100.0	11	16	4	18	260.1	8	217.2	209.3
DeKalb	DKC62-53RIB (Check)	275.8	17.5	15.7	57.6	31625.0	0.0	98.9	12	4	9	14	259.9	9	222.2	
Mid-Atlantic Seeds	MA8064	274.5	16.3	16.9	59.4	32000.0	0.0	98.4	13	17	11	16	254.8	14	216.7	
MorCORN	MC3952	270.3	16.8	16.2	57.7	29250.0	0.5	96.9	14	5	10	2	257.3	13	226.7	215.1
Mid-Atlantic Seeds	MA7103HD	268.7	18.6	14.5	54.4	30750.0	0.4	96.3	15	8	16	13	253.5	15	218.0	
Mid-Atlantic Seeds	MA8042	263.4	16.2	16.3	58.6	32250.0	0.0	94.4	16	1	17	1	252.0	16	225.4	
Mid-Atlantic Seeds	MA8039	247.5	15.6	16.0	58.0	30750.0	0.0	88.7	17	14	15	9	245.2	17	212.8	201.7
AgVenture	AV4104AM	240.5	17.4	13.9	56.3	31500.0	0.0	86.2	18	11	18	12	237.7	18	206.2	
	Check Avg.	279.0	17.1	16.3	57.9	31250.0	0.0									
	Test Avg.	278.5	17.5	16.0	57.1	31243.0	0.1									
	LSD (0.05)	25.1	1.0	1.9	1.7	1890.0	NS									
	% C.V.	5.7	4.0	8.0	2.0	3.7	171.8									
	Check Avg. + LSD (0.05)	304.1														

¹The bold text and darker shading indicate that the yield of the hybrids is not statistically different from the top yielding hybrid
NS = not statistically significant at a 5% probability level

**Table 10. Irrigated Corn Hybrid Performance Summary
Plum Creek Farms, LLC (Sussex County) Laurel, Delaware**

Planted 4/28/2021 & Harvested September 22, Early-Medium Hybrids																
Brand	Hybrid	Yield Bu/A ¹	% Moisture	Yield/Moisture	Test Weight	Final Pop	% Stalk Lodging	% Relative Yield to Check Avg.	Performance Ranking for				Pooled sites		Two Year Yield Ave. Bu/A	
									Laurel Irrigated	Georgetown Irrigated	Camden Wyoming Irrigated	Middletown Dryland	Irrigated Yield Avg. Bu/A	Rank		Pooled Yield Ave. Bu/A
Mid-Atlantic Seeds	MA8110	309.2	17.7	17.6	58.4	31750.0	0.0	114.7	1	14	14	19	274.5	6	232.3	
Local Seed	LC1398 VT2PRIB	305.9	17.4	17.6	58.6	30875.0	1.2	113.5	2	10	19	2	273.3	7	237.1	227.9
AgVenture	AV4313AM	304.4	18.8	16.2	57.3	31500.0	0.0	112.9	3	8	8	9	277.7	2	238.6	219.9
LG Seeds	LG64C30TRC	304.3	18.0	17.0	58.5	30375.0	0.4	112.9	4	1	13	3	279.6	1	241.7	
LG Seeds	LG5643VT2PRO	301.3	17.5	17.2	57.8	32500.0	0.0	111.8	5	19	1	6	277.4	4	239.0	
Local Seed	LC1497 DGV2PRIB	294.8	17.5	16.9	58.5	31375.0	0.0	109.4	6	3	5	11	277.7	3	238.4	222.7
MorCorn	MC4311	291.9	17.8	16.4	58.1	31625.0	0.4	108.3	7	2	7	16	276.8	5	235.2	
MorCorn	MC4255	288.8	18.7	15.6	56.5	31250.0	0.0	107.2	8	4	12	4	273.2	8	236.2	219.1
Local Seed	LC1307 TCRIB	288.1	17.8	16.3	57.8	30750.0	0.0	106.9	9	12	3	15	273.0	9	232.5	
Seed Consultants	SC1112AM	286.3	18.3	15.6	57.7	30625.0	1.2	106.2	10	20	2	13	271.0	10	232.3	
Seed Consultants	SC1122Q	284.2	18.4	15.5	57.8	31875.0	0.0	105.4	11	18	6	17	268.4	13	228.8	
MorCorn	MC4319	283.3	18.5	15.3	58.3	30875.0	0.0	105.1	12	6	16	20	268.6	12	227.6	214.5
Mid-Atlantic Seeds	MA8128	279.1	17.4	16.1	58.3	30875.0	0.4	103.6	13	16	9	12	266.0	14	229.5	210.7
MorCorn	MC4161	273.9	18.2	15.1	56.8	32000.0	0.4	101.6	14	13	11	10	264.1	16	228.3	
Mid-Atlantic Seeds	MA8141	273.0	18.4	14.8	57.8	32000.0	0.0	101.3	15	11	10	14	265.1	15	227.4	223.6
Local Seed	LC1407 VT2PRIB	271.3	18.3	14.8	57.9	31500.0	0.8	100.6	16	5	4	18	269.3	11	229.5	
Dyna-Gro	D54VC14	271.0	17.8	15.3	59.6	30500.0	0.0	100.6	17	15	20	5	258.5	19	225.0	
DeKalb	DKC64-65RIB (Check)	270.7	17.3	15.6	57.4	31500.0	0.0	100.4	18	7	15	8	264.0	17	228.5	
DeKalb	DKC65-95RIB (Check)	268.3	18.3	14.7	58.3	31500.0	0.0	99.6	19	9	17	1	261.3	18	229.0	
Seed Consultants	SC1141AM	265.0	17.9	14.8	57.8	31625.0	2.4	98.3	20	17	18	21	258.0	20	213.8	203.5
Mid-Atlantic Seeds	MA8132	262.5	19.3	13.7	56.9	28000.0	0.0	97.4	21	21	21	7	247.7	21	216.4	
	Check Avg.	269.5	17.8	15.2	57.9	31500.0	0.0									
	Test Avg.	284.6	18.1	15.8	57.9	31185.0	0.3									
	LSD (0.05)	24.6	0.9	1.7	1.7	1301.0	NS									
	% C.V.	5.4	3.5	7.1	2.1	2.7	175.1									
	Check Avg. + LSD (0.05)	294.1														

¹The bold text and darker shading indicate that the yield of the hybrids is not statistically different from the top yielding hybrid
NS = not statistically significant at a 5% probability level

**Table 11. Irrigated Corn Hybrid Performance Summary
Plum Creek Farms, LLC (Sussex County) Laurel, Delaware**

Planted 4/28/2021 & Harvested September 22, Medium Hybrids																
Brand	Hybrid	Yield Bu/A ¹	% Moisture	Yield/Moisture	Test Weight	Final Pop	% Stalk Lodging	% Relative Yield to Check Avg.	Performance Ranking for				Pooled sites		Two Year Yield Ave. Bu/A	
									Laurel Irrigated	Georgetown Irrigated	Camden Wyoming Irrigated	Middletown Dryland	Irrigated Yield Avg. Bu/A	Rank		Pooled Yield Ave. Bu/A
DeKalb	DKC70-27RIB (Check)	308.6	19.6	15.8	58.5	30250.0	0.4	104.2	1	1	1	2	283.9	1	248.1	
AgVenture	AV3917AM	305.8	20.3	15.1	57.2	32500.0	0.0	103.3	2	11	4	10	272.0	3	231.5	
NK	NK1748-3110	303.9	20.4	14.9	56.6	31500.0	0.4	102.6	3	2	13	11	272.7	2	231.3	
Mid-Atlantic Seeds	MA5155	296.3	20.0	14.8	58.4	31125.0	0.0	100.1	4	9	11	7	266.6	7	229.8	212.4
MorCorn	MC4725	294.5	20.1	14.7	57.9	31750.0	0.0	99.5	5	12	2	4	269.6	4	236.9	228.8
Seed Consultants	SC1188AM	291.8	21.0	13.9	56.9	32875.0	0.4	98.5	6	5	5	13	269.2	5	227.9	215.2
Mid-Atlantic Seeds	MA8158	284.6	20.1	14.2	58.2	31500.0	0.0	96.1	7	4	14	9	260.4	10	223.2	216.0
LG Seeds	LG66C44VT2PRO	284.1	19.0	15.0	57.9	30375.0	0.5	95.9	8	6	3	3	268.2	6	236.0	
Dyna-Gro	D58VC65 (Check)	283.5	19.1	14.9	59.1	32125.0	0.4	95.7	9	7	10	5	263.5	8	231.0	
MorCorn	MC4670	278.9	19.7	14.2	57.7	29875.0	0.0	94.2	10	13	12	1	257.7	13	228.9	221.7
Dyna-Gro	D55VC80	278.7	20.1	13.9	56.0	32625.0	0.4	94.1	11	10	9	6	260.3	11	227.2	
NK	NK1667-3110	272.9	19.6	14.0	56.9	31250.0	0.0	92.2	12	14	8	8	254.6	14	219.1	
AgVenture	AV3715AM	265.0	20.0	13.3	56.6	30000.0	0.0	89.5	13	3	6	14	261.2	9	221.0	
Seed Consultants	SC1158AM	264.3	19.4	13.7	57.9	30750.0	0.0	89.3	14	8	7	12	258.1	12	219.9	218.5
	Check Avg.	296.1	19.4	15.4	58.8	31188.0	0.4									
	Test Avg.	286.6	19.9	14.4	57.5	31321.0	0.2									
	LSD (0.05)	22.4	0.8	1.3	1.1	1889.0	NS									
	% C.V.	5.1	2.6	5.9	1.2	3.4	200.0									
	Check Avg. + LSD (0.05)	318.5														

¹The bold text and darker shading indicate that the yield of the hybrids is not statistically different from the top yielding hybrid
NS = not statistically significant at a 5% probability level

Table 12. Irrigated Corn Hybrid Performance Summary
Carvel Rresearch & Education Center (Sussex County) Georgetown, Delaware

Planted 4/27/2021 & Harvested September 30, Early Hybrids									Performance Ranking for				Pooled sites			
Brand	Hybrid	Yield Bu/A	% Moisture	Yield/Moisture	Test Weight	Final Pop	% Stalk Lodging	% Relative Yield to Check Avg.	Georgetown Irrigated	Laurel Irrigated	Camden Wyoming Irrigated	Middletown Dryland	Irrigated Yield Avg. Bu/A	Rank	Pooled Yield Ave. Bu/A	Two Year Yield Ave. Bu/A
Mid-Atlantic Seeds	MA8042	254.5	14.9	17.1	58.4	31750.0	0.4	105.5	1	16	17	1	252.0	16	225.4	
LG Seeds	LG5590VT2RIB	251.2	15.6	16.1	58.8	32250.0	0.4	104.1	2	5	8	15	267.1	4	227.0	
AgVenture	AV9610AM	247.8	15.4	16.1	59.2	31625.0	0.0	102.7	3	2	3	4	275.3	2	238.7	
DeKalb	DKC62-53RIB (Check)	244.9	15.3	16.1	58.2	31125.0	0.4	101.5	4	12	9	14	259.9	9	222.2	
MorCorn	MC3952	243.5	14.8	16.5	58.5	31500.0	0.0	101.0	5	14	10	2	257.3	13	226.7	215.1
AgVenture	AV5107AM	243.4	14.9	16.3	58.8	31625.0	11.1	100.9	6	3	2	6	268.8	3	231.4	
Seed Consultants	SC1092AM	243.3	15.3	15.9	58.6	30375.0	0.0	100.8	7	4	14	17	261.4	7	220.3	
Mid-Atlantic Seeds	MA7103HD	242.8	14.9	16.3	59.2	31625.0	0.0	100.7	8	15	16	13	253.5	15	218.0	
Mid-Atlantic Seeds	MA8091	241.8	15.3	15.9	59.1	31875.0	0.0	100.2	9	6	5	3	264.3	5	231.9	220.5
AgVenture	AV7408AM	241.4	15.0	16.2	59.0	31250.0	0.0	100.1	10	10	6	8	262.2	6	225.8	217.1
AgVenture	AV4104AM	241.3	15.5	16.0	58.4	31125.0	3.1	100.0	11	18	18	12	237.7	18	206.2	
NK	NK1082-5222A-EZ1	241.1	15.1	16.0	58.9	31125.0	0.0	99.9	12	7	13	5	259.4	10	224.5	208.1
Seed Consultants	SC1071AM	239.6	15.9	15.1	58.3	32375.0	1.2	99.3	13	1	1	10	275.7	1	235.3	221.2
Mid-Atlantic Seeds	MA8039	238.2	15.1	15.8	57.9	31500.0	1.6	98.7	14	17	15	9	245.2	17	212.8	201.7
DeKalb	DKC62-20RIB (Check)	237.5	15.3	15.6	58.4	32250.0	0.4	98.5	15	9	12	7	258.6	11	223.7	
Mid-Atlantic Seeds	MA8106	233.0	15.2	15.3	58.8	31875.0	0.0	96.6	16	11	4	18	260.1	8	217.2	209.3
Mid-Atlantic Seeds	MA8064	232.1	15.7	14.8	57.9	31875.0	0.8	96.2	17	13	11	16	254.8	14	216.7	
Seed Consultants	SC1087AM	227.3	14.8	15.4	59.0	32000.0	2.8	94.2	18	8	7	11	258.4	12	221.9	214.9
	Check Avg.	241.2	15.3	15.8	58.3	31688.0	0.4									
	Test Avg.	241.4	15.2	15.9	58.6	31618.0	1.2									
	LSD (0.05)	NS	NS	NS	NS	NS	4.4									
	% C.V.	5.0	3.7	5.4	1.5	2.6	172.8									
	Check Avg. + LSD (0.05)	260.6														

NS = not statistically significant at a 5% probability level

Table 13. Irrigated Corn Hybrid Performance Summary
Carvel Research & Education Center (Sussex County) Georgetown, Delaware

Planted 4/27/2021 & Harvested September 30, Early-Medium Hybrids										Performance Ranking for				Pooled sites		Two Year Yield Ave. Bu/A
Brand	Hybrid	Yield Bu/A ¹	% Moisture	Yield/Moisture	Test Weight	Final Pop	% Stalk Lodging	% Relative Yield to Check Avg.	Georgetown Irrigated	Laurel Irrigated	Camden Wyoming Irrigated	Middletown Dryland	Irrigated Yield Avg. Bu/A	Rank	Pooled Yield Ave. Bu/A	
LG Seeds	LG64C30TRC	269.6	16.6	16.3	58.0	31375.0	0.8	104.8	1	4	13	3	279.6	1	241.7	
MorCorn	MC4311	268.1	16.7	16.1	58.7	32125.0	0.0	104.2	2	7	7	16	276.8	5	235.2	
Local Seed	LC1497 DGV2PRIB	265.1	16.6	16.1	58.4	32000.0	0.0	103.0	3	6	5	11	277.7	3	238.4	
MorCorn	MC4255	264.2	17.5	15.1	58.5	31625.0	0.0	102.7	4	8	12	4	273.2	8	236.2	
Local Seed	LC1407 VT2PRIB	262.5	16.8	15.7	58.0	30875.0	1.2	102.0	5	16	4	18	269.3	11	229.5	
MorCorn	MC4319	261.7	16.9	15.5	58.4	31750.0	0.4	101.7	6	12	16	20	268.6	12	227.6	
DeKalb	DKC64-65RIB (Check)	259.1	16.1	16.1	58.7	31500.0	0.4	100.7	7	18	15	8	264.0	17	228.5	
AgVenture	AV4313AM	258.6	16.6	15.6	59.0	30625.0	4.0	100.5	8	3	8	9	277.7	2	238.6	
DeKalb	DKC65-95RIB (Check)	255.4	16.6	15.4	58.6	32125.0	0.0	99.3	9	19	17	1	261.3	18	229.0	
Local Seed	LC1398 VT2PRIB	255.3	16.7	15.3	58.4	31875.0	1.6	99.2	10	2	19	2	273.3	7	237.1	
Mid-Atlantic Seeds	MA8141	255.1	16.8	15.2	57.7	31375.0	0.4	99.2	11	15	10	14	265.1	15	227.4	
Local Seed	LC1307 TCRIB	254.2	16.5	15.4	58.7	31500.0	0.0	98.8	12	9	3	15	273.0	9	232.5	
MorCorn	MC4161	251.5	16.8	15.0	58.9	31125.0	0.8	97.7	13	14	11	10	264.1	16	228.3	
Mid-Atlantic Seeds	MA8110	251.0	16.5	15.2	58.5	32500.0	0.4	97.6	14	1	14	19	274.5	6	232.3	
Dyna-Gro	DS4VC14	250.9	16.7	15.1	58.1	32000.0	0.0	97.5	15	17	20	5	258.5	19	225.0	
Mid-Atlantic Seeds	MA8128	250.3	17.4	14.4	57.9	31875.0	0.0	97.3	16	13	9	12	266.0	14	229.5	
Seed Consultants	SC1141AM	249.8	17.0	14.7	58.2	32125.0	24.3	97.1	17	20	18	21	258.0	20	213.8	
Seed Consultants	SC1122Q	248.1	16.3	15.2	59.3	30875.0	1.6	96.4	18	11	6	17	268.4	13	228.8	
LG Seeds	LG5643VT2PRO	248.1	17.1	14.5	58.5	32625.0	0.4	96.4	19	5	1	6	277.4	4	239.0	
Seed Consultants	SC1112AM	247.7	16.9	14.7	58.0	32875.0	4.5	96.2	20	10	2	13	271.0	10	232.3	
Mid-Atlantic Seeds	MA8132	240.4	16.7	14.4	59.2	30250.0	0.0	93.4	21	21	21	7	247.7	21	216.4	
	Check Avg.	257.3	16.4	15.8	58.7	31813.0	0.2									
	Test Avg.	255.5	16.7	15.3	58.5	31667.0	1.9									
	LSD (0.05)	14.6	NS	1.0	NS	1169.1	8.3									
	% C.V.	3.7	3.3	4.2	1.3	2.5	178.1									
	Check Avg. + LSD (0.05)	271.9														

¹The bold text and darker shading indicate that the yield of the hybrids is not statistically different from the top yielding hybrid
 NS = not statistically significant at a 5% probability level

Table 14. Irrigated Corn Hybrid Performance Summary
Carvel Research & Education Center (Sussex County) Georgetown, Delaware

Planted 4/27/2021 & Harvested September 30, Medium Hybrids										Performance Ranking for				Pooled sites		Two Year Yield Ave. Bu/A
Brand	Hybrid	Yield Bu/A	% Moisture	Yield/ Moisture	Test Weight	Final Pop	% Stalk Lodging	% Relative Yield to Check Avg.	Georgetown Irrigated	Laurel Irrigated	Camden Wyoming Irrigated	Middletown Dryland	Irrigated Yield Avg. Bu/A	Rank	Pooled Yield Ave. Bu/A	
DeKalb	DKC70-27RIB (Check)	266.7	18.3	14.6	59.5	31625.0	0.0	103.9	1	1	1	2	283.9	1	248.1	
NK	NK1748-3110	258.9	15.8	16.4	58.7	32125.0	18.4	100.9	2	3	13	11	272.7	2	231.3	
AgVenture	AV3715AM	254.2	16.9	15.2	59.6	31750.0	0.4	99.1	3	13	6	14	261.2	9	221.0	
Mid-Atlantic Seeds	MA8158	253.5	17.2	14.7	59.0	32625.0	0.0	98.8	4	7	14	9	260.4	10	223.2	
Seed Consultants	SC1188AM	248.7	17.6	14.2	59.4	31750.0	8.6	96.9	5	6	5	13	269.2	5	227.9	
LG Seeds	LG66C44VT2PRO	247.5	16.5	15.1	58.7	31000.0	0.0	96.5	6	8	3	3	268.2	6	236.0	
Dyna-Gro	D58VC65 (Check)	246.4	17.0	14.5	58.0	31375.0	0.0	96.0	7	9	10	5	263.5	8	231.0	
Seed Consultants	SC1158AM	246.3	16.2	15.3	60.3	30500.0	0.4	96.0	8	14	7	12	258.1	12	219.9	
Mid-Atlantic Seeds	MA5155	244.5	17.1	14.3	60.0	31625.0	1.6	95.3	9	4	11	7	266.6	7	229.8	
Dyna-Gro	D55VC80	241.1	17.2	14.1	59.2	32875.0	0.0	93.9	10	11	9	6	260.3	11	227.2	
AgVenture	AV3917AM	240.5	15.8	15.3	58.2	32500.0	3.8	93.7	11	2	4	10	272.0	3	231.5	
MorCorn	MC4725	239.7	15.8	15.3	59.5	31875.0	0.8	93.4	12	5	2	4	269.6	4	236.9	
MorCorn	MC4670	238.3	16.6	14.4	59.7	31500.0	0.0	92.9	13	10	12	1	257.7	13	228.9	
NK	NK1667-3110	228.8	16.6	13.9	59.7	31500.0	0.0	89.2	14	12	8	8	254.6	14	219.1	
	Check Avg.	256.6	17.7	14.6	58.8	31500.0	0.0									
	Test Avg.	246.8	16.7	14.8	59.2	31759.0	2.4									
	LSD (0.05)	NS	NS	NS	1.1	NS	9.0									
	% C.V.	5.1	6.0	6.1	1.2	2.8	157.1									
	Check Avg. + LSD (0.05)	276.0														

NS = not statistically significant at a 5% probability level